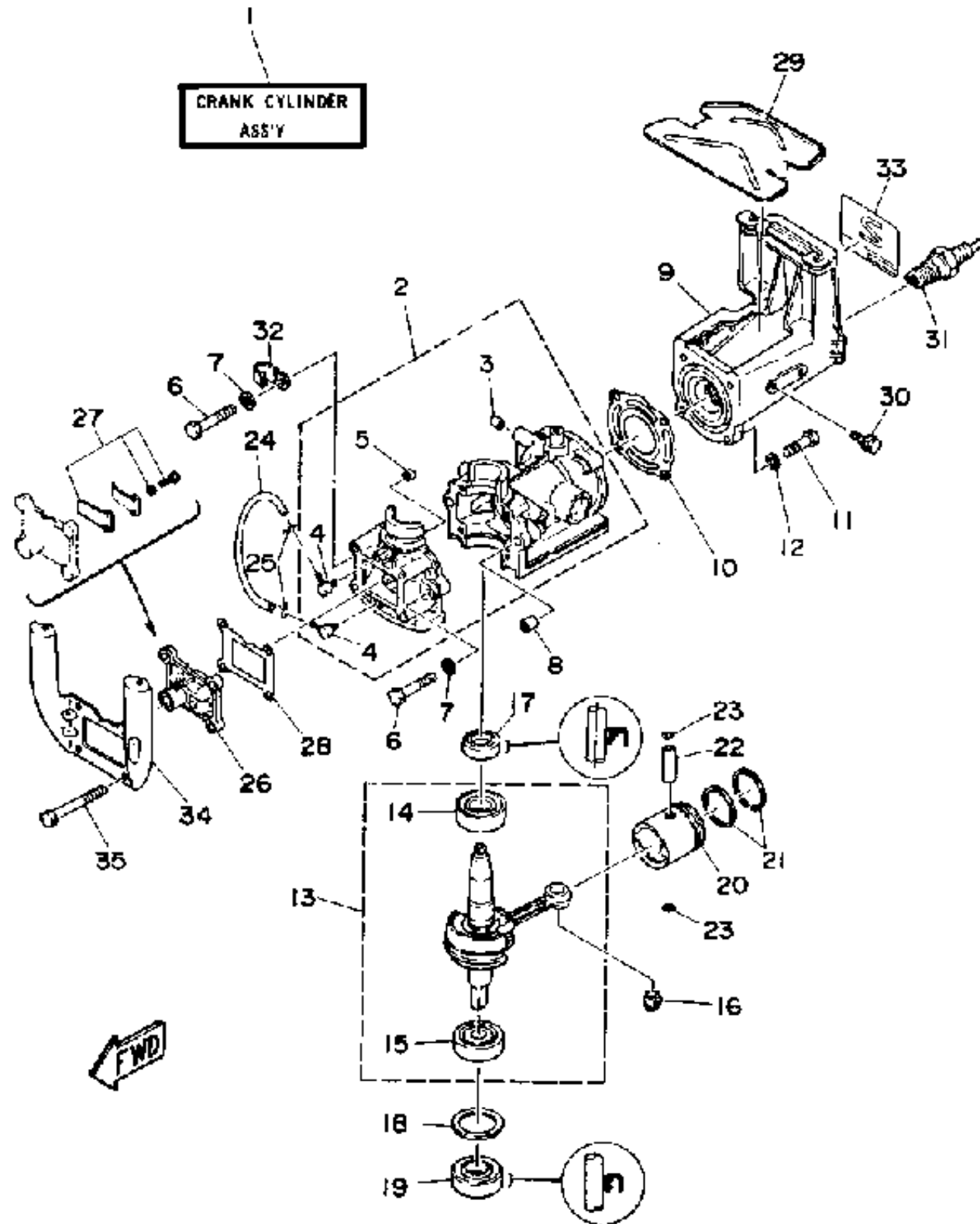


# CRANKCASE CYLINDER PISTON

Ref No.	Part Number	Description	Qty	Remarks
1	6A1-W0090-12-00	CRANK CYLINDER ASSEMBLY (REF. #2-30)	1	
2	6A1-15100-60-94	CRANKCASE ASSEMBLY	1	
3	90336-06001-00	. .PLUG, TAPER	1	
4	650-14485-02-00	. PIPE, JOINT	2	
5	624-11379-00-00	. .VALVE, CHECK	1	
6	97313-06040-00	BOLT, HEXAGON	2	
7	92990-06600-00	WASHER, PLATE	2	
8	90201-35300-00	WASHER, PLATE	1	
8	99530-10014-00	.PIN, DOWEL	2	
9	6A1-11111-01-94	HEAD, CYLINDER 1	1	
10	6A1-11181-A0-00	GASKET, CYLINDER HEAD 1	1	
11	97395-06025-00	BOLT	4	
12	92990-06600-00	WASHER, PLATE	4	
13	6A1-11400-00-00	CRANKSHAFT ASSY	1	
14	93306-00409-00	. .BEARING	1	
15	93306-30204-00	. .BEARING	1	
16	93310-210M0-00	BEARING	1	
17	93102-20108-00	OIL SEAL	1	
19	93102-15M32-00	OIL SEAL	1	
20	646-11636-01-00	PISTON (0.50MM O/S)	1	ALT. PART

CONTINUED ON NEXT FRAME >



# CRANKCASE CYLINDER PISTON

Ref No.	Part Number	Description	Qty	Remarks
20	646-11631-01-98	PISTON (STD)	1	
21	646-11601-01-00	PISTON RING SET (STD)	1	
21	646-11601-21-00	PISTON RING SET (0.50MM O/S)	1	ALT. PART
22	646-11633-00-00	PIN, PISTON	1	
23	93450-11021-00	CIRCLIP	2	
24	90445-07M32-00	HOSE (L120)	1	
25	90467-06016-00	CLIP	2	
26	6A1-13610-00-00	REED VALVE ASSY	1	
27	6A1-W0004-00-00	. .REED SET	1	
28	6A1-13621-00-00	GASKET, VALVE SEAT	1	
29	6A1-24141-00-00	PROTECTOR, FUEL TANK	1	
30	90105-06M23-00	.BOLT FLANGE	2	
31	NGK-B5HS0-00-00	PLUG, SPARK (NGK B5HS)	1	
32	90465-08028-00	CLAMP	1	
33	6A1-42678-10-00	GRAPHIC, REAR	1	
34	6A1-15771-00-00	STAY 1	1	
35	97313-06060-00	BOLT, HEXAGON	4	

