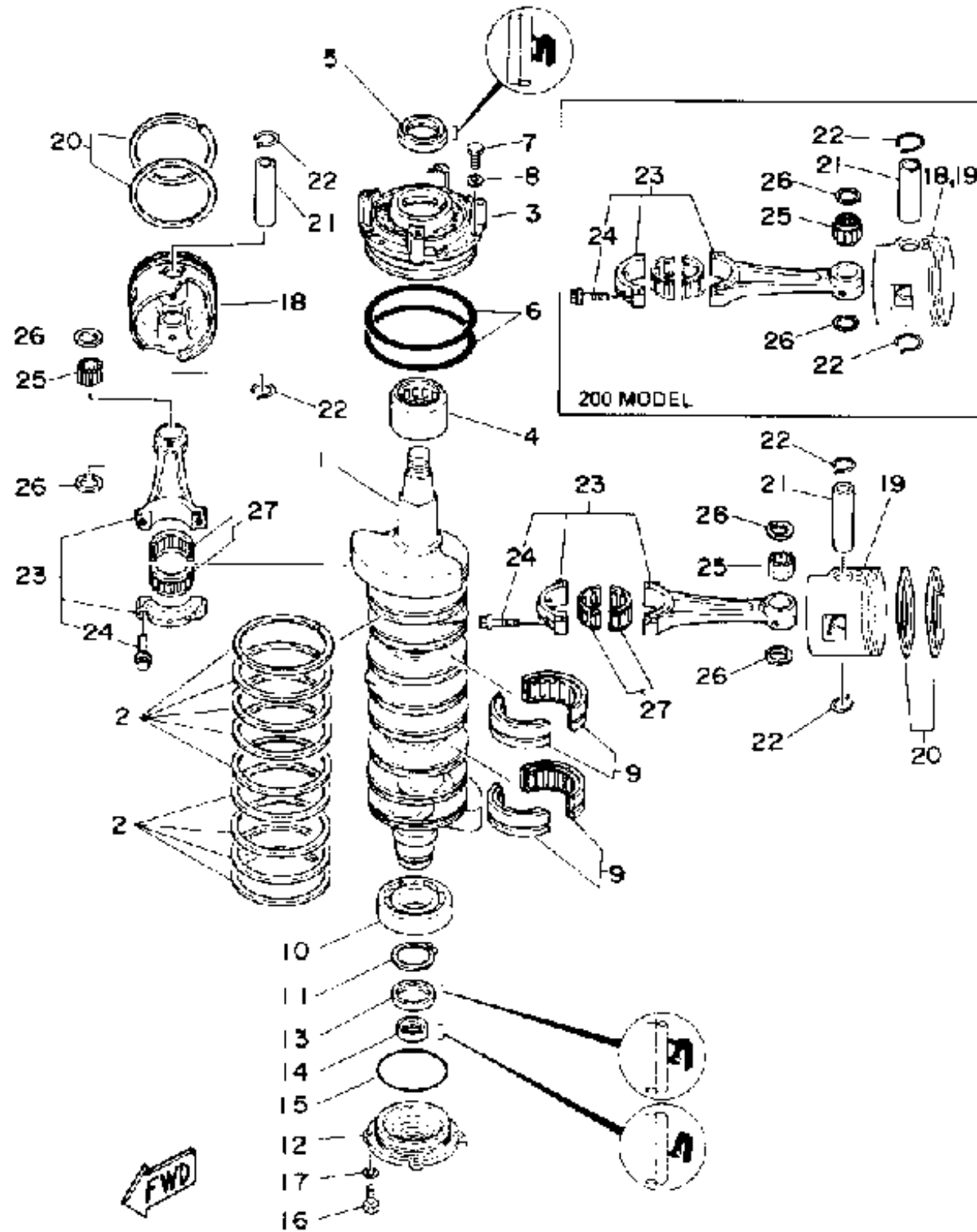


# CRANKSHAFT PISTON

Ref No.	Part Number	Description	Qty	Remarks
1	6R3-11411-00-00	CRANKSHAFT	1	
2	6E5-11447-00-00	SEAL, CRANK	9	
3	6R3-15163-00-94	HOUSING, BEARING 1	1	
4	93311-940U3-00	BEARING	1	
5	93102-40M38-00	OIL SEAL	1	
6	93211-04384-00	.O-RING	2	
7	97313-06020-00	BOLT, HEXAGON	3	
8	92990-06600-00	.WASHER, PLATE	3	
9	93310-954V3-00	BEARING, CYLINDRICAL	2	
10	93306-208U0-00	BEARING	1	
11	93410-40M03-00	CIRCLIP	1	
12	6G5-15359-00-94	HOUSING, OIL SEAL	1	
13	93102-35M13-00	OIL SEAL	1	
14	93101-22M15-00	.OIL SEAL	1	
15	93210-74M35-00	.O-RING	1	
16	97395-06020-00	BOLT, HEXAGON	4	
17	92990-06600-00	.WASHER, PLATE	4	
18	6R5-11636-10-00	PISTON 2 O/S 0.50 (0.50MM O/S)	3	AP 200 MODEL
18	6R5-11631-01-93	PISTON (STD)	3	UR 150/175 MODEL
18	6R5-11636-01-00	PISTON (0.50MM O/S)	3	AP 150/175 MODEL

CONTINUED ON NEXT FRAME >



# CRANKSHAFT PISTON

Ref No.	Part Number	Description	Qty	Remarks
18	6R5-11631-10-93	PISTON STD	3	UR 200 MODEL
19	6R5-11642-01-93	PISTON 2 (STD)	3	UR 150/175 MODEL
19	6R5-11646-01-00	PISTON (2ND O/S 0.50MM)	3	AP 150/175 MODEL
19	6R5-11642-10-93	PISTON STD	3	UR UR 200 MODEL
19	6R5-11646-10-00	PISTON 2ND (0.50MM O/S)	3	AP 200 MODEL
20	6R5-11605-00-00	PISTON RING SET (0.50MM O/S)	6	AP
20	6R5-11603-00-00	PISTON RING SET (STD)	6	
21	6K7-11633-00-00	PIN, PISTON	6	UR 150/175 MODEL
21	6R5-11633-10-00	PIN, PISTON	6	UR 200 MODEL
22	6R5-11634-10-00	CLIP, PISTON PIN	12	UR 200 MODEL
22	6E5-11634-00-00	CLIP, PISTON PIN	12	UR 150/175 MODEL
23	6R5-11650-10-00	CONNECTING ROD ASSY	6	UR 200 MODEL
23	6E5-11650-01-00	CONNECTING ROD ASSY	6	UR 150/175 MODEL
24	90109-08M61-00	. BOLT	2	
25	93310-323V6-00	BEARING	6	UR 200 MODEL
25	93603-21111-00	PIN, DOWEL	180	UR 150/175 MODEL
26	90201-23M01-00	WASHER, PLATE	12	UR
27	93310-836V2-00	BEARING	6	

