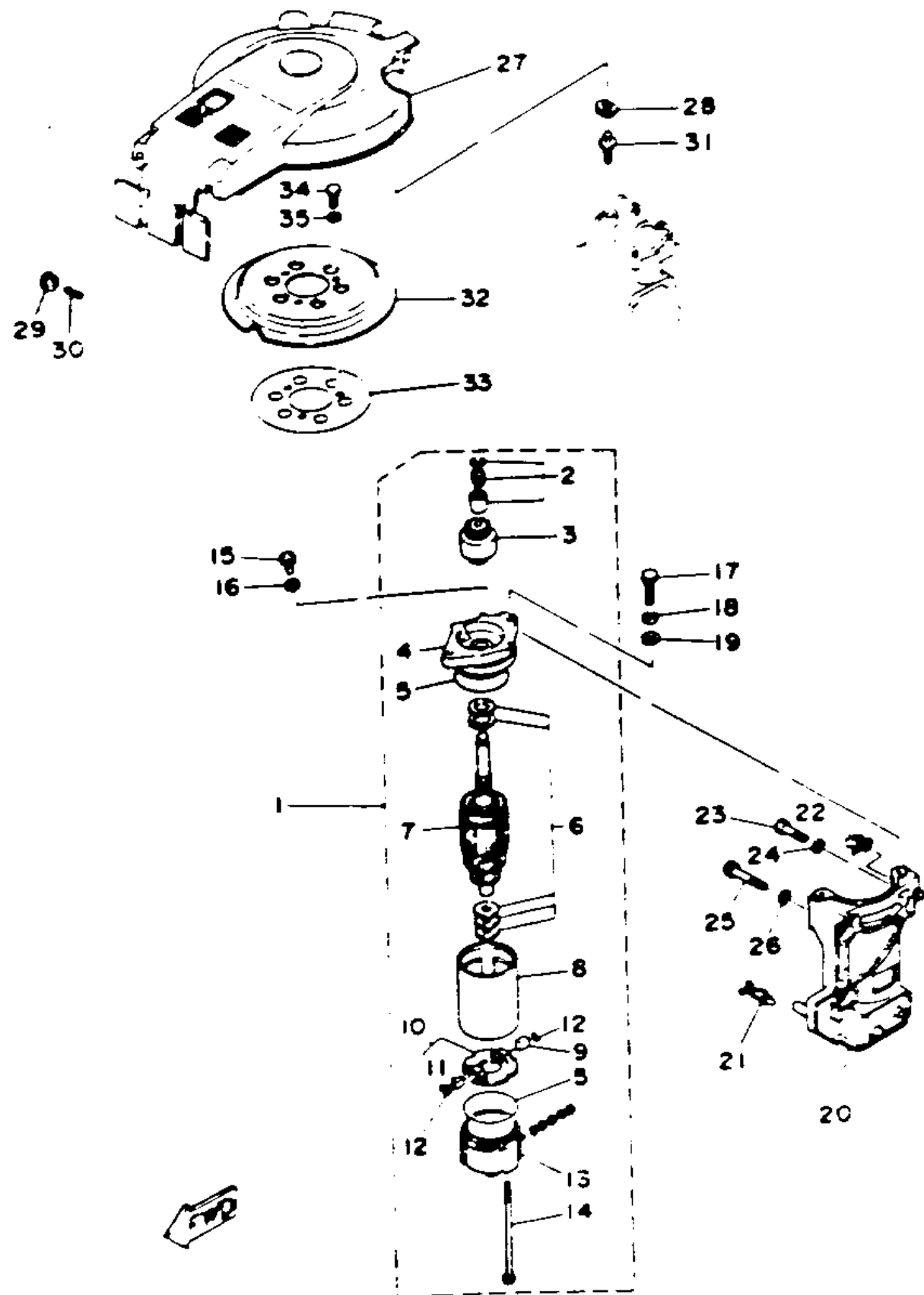


STARTER MOTOR (ER)

Ref No.	Part Number	Description	Qty	Remarks
1	6J4-81800-01-00	STARTING MOTOR ASSEMBLY	1	
2	689-81857-11-00	. PINION STOPPER SET	1	
3	689-81807-12-00	. GEAR ASSY, STARTING MOTOR	1	
4	6F5-81830-11-00	. FRONT BRACKET ASSY	1	
5	689-81847-11-00	. O-RING	2	
6	689-81809-11-00	. WASHER KIT	1	
7	689-81850-12-00	. ARMATURE ASSY	1	
8	689-81810-11-00	. STATOR ASSY	1	
9	689-81811-11-00	. BRUSH 1	1	
10	689-81840-11-00	. BRUSH HOLDER ASSY	1	
11	689-81812-11-00	. BRUSH 2	1	
12	689-81813-10-00	. SPRING, BRUSH	2	
13	689-81820-11-00	. REAR BRACKET ASSEMBLY	1	
14	689-81826-10-00	. BOLT	2	
15	97313-08016-00	BOLT, HEXAGON	1	
16	92990-08600-00	.WASHER, PLATE	1	
17	97313-08030-00	BOLT	2	
18	92990-08100-00	.WASHER, SPRING	2	
19	92990-08600-00	.WASHER, PLATE	2	
20	6J8-81822-00-94	BRACKET, STARTING MOTOR	1	

CONTINUED ON NEXT FRAME >



STARTER MOTOR (ER)

Ref No.	Part Number	Description	Qty	Remarks
21	90464-12M09-00	CLAMP	2	
22	90464-03M15-00	.CLAMP	1	
23	97313-08035-00	BOLT	2	
24	92990-08600-00	.WASHER, PLATE	2	
25	97313-08055-00	BOLT, HEXAGON	1	
26	92990-08600-00	.WASHER, PLATE	1	
27	6J8-81337-10-00	COVER, FLYWHEEL	1	
28	90480-14M17-00	GROMMET	1	
29	90480-10M16-00	.GROMMET	2	
30	91690-50022-00	PIN, SPRING	2	
31	6J8-81338-00-00	STAY	1	
32	6J8-15723-E1-00	PULLEY, STARTER	1	
33	6J8-81365-A0-00	GASKET, HOLE COVER	1	
34	97011-08016-00	BOLT	3	
35	92990-08600-00	.WASHER, PLATE	3	