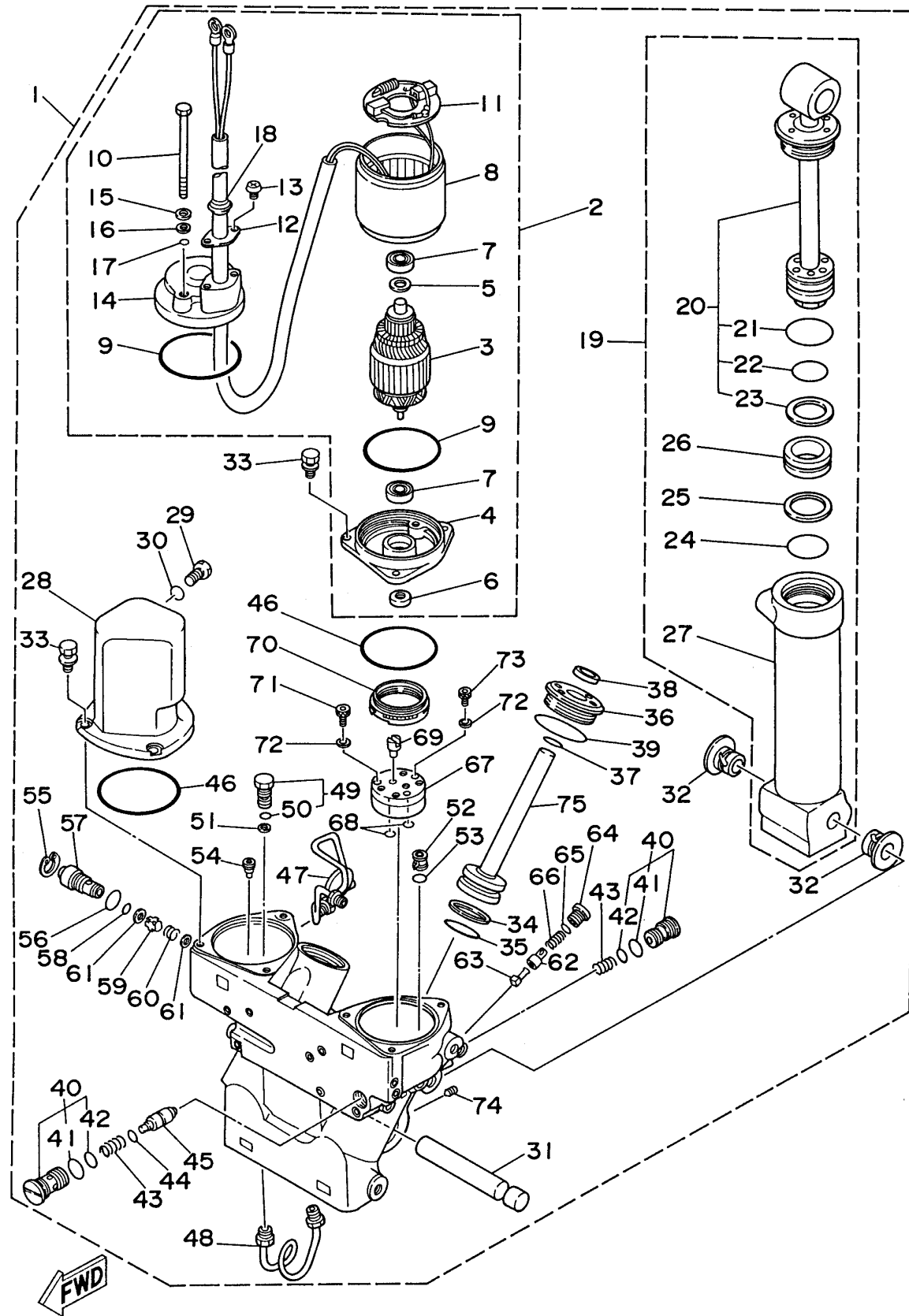


# POWER TRIM TILT ASSEMBLY 1

Ref No.	Part Number	Description	Qty	Remarks
1	6G5-43800-10-4D	POWER TRIM & TILT ASSEMBLY	1	
2	6G5-43880-10-00	.. MOTOR ASSEMBLY	1	
3	6G5-43805-10-00	.. ARMATURE ASSEMBLY	1	
4	6G5-43881-10-00	.. FRAME, END	1	
5	6G5-4387G-10-00	.. WASHER	1	
6	93102-08M43-00	... OIL SEAL	1	
7	93300-608U0-00	.. BEARING	2	
8	6G5-43804-00-00	.. STATOR ASSY	1	
9	6G5-43865-00-00	... O-RING	2	
10	6G5-43887-00-00	.. BOLT, THROUGH	2	
11	6G5-43806-10-00	.. BRUSH HOLDER ASSEMBLY	1	
12	6G5-43899-00-00	.. PLATE, STOPPER	1	
13	6G5-43886-00-00	.. BOLT	2	
14	6G5-43884-00-00	.. FRAME, COMMUTATOR END	1	
15	6G5-43893-00-00	.. WASHER	2	
16	6G5-43889-10-00	.. PLATE SEAT	2	
17	6G5-43867-00-00	.. O-RING	2	
18	6G5-43885-00-00	.. GROMMET	1	
19	6G5-4380E-01-00	.. TILT CYLINDER ASSEMBLY	1	
20	6G5-43810-00-00	.. PISTON SUB ASSEMBLY	1	

CONTINUED ON NEXT FRAME >

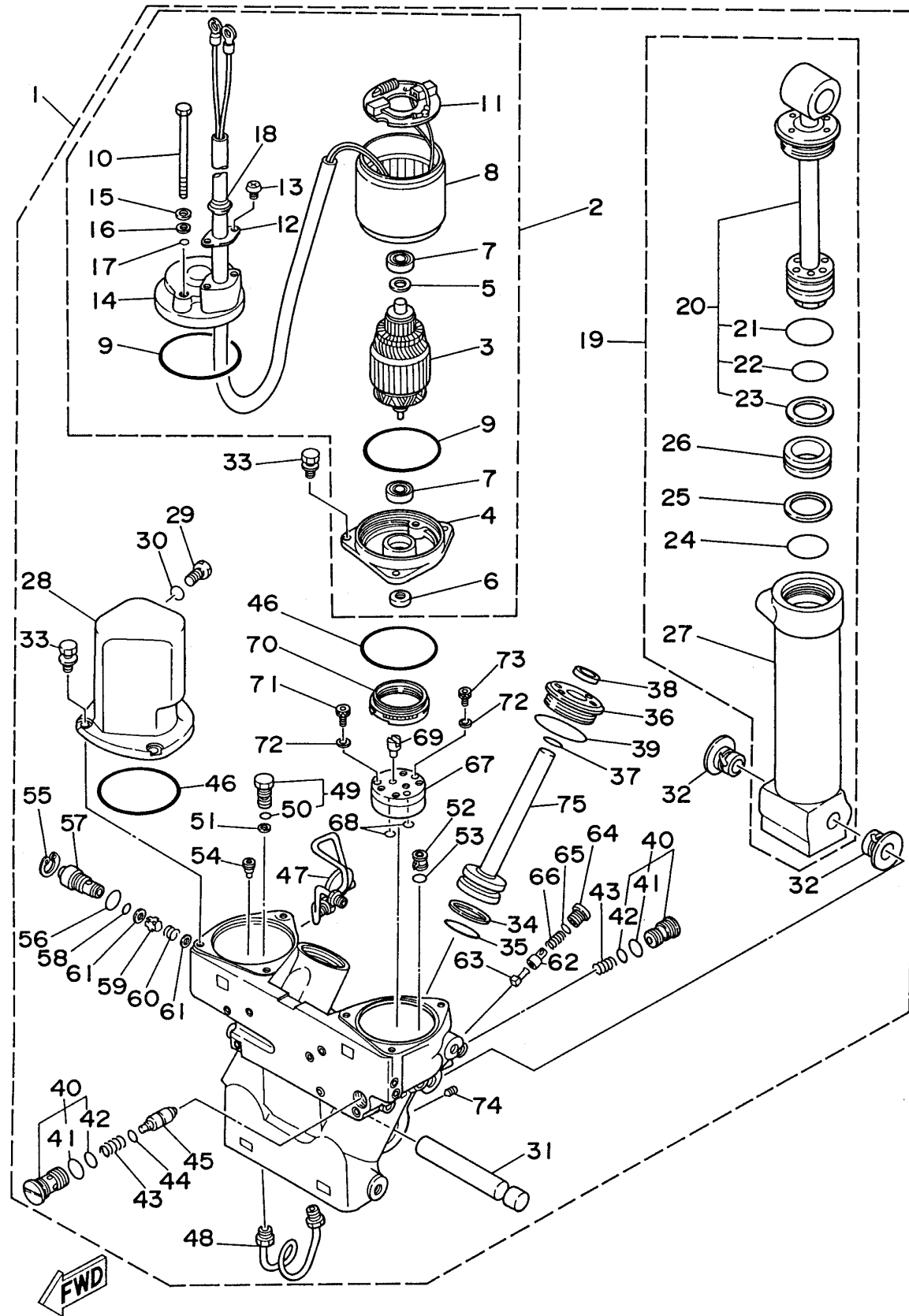


6N6JA-4120  
225tru

## POWER TRIM TILT ASSEMBLY 1

Ref No.	Part Number	Description	Qty	Remarks
21	6E5-43861-00-00	.. O-RING	1	
22	6G5-43862-00-00	.. O-RING	1	
23	6E5-43872-00-00	.. RING, BACK UP	1	
24	6G5-43862-00-00	.. O-RING	1	
25	6E5-43872-00-00	.. RING, BACK UP	1	
26	6E5-43814-02-00	.. PISTON, FREE	1	
27	6G5-43813-00-00	.. CYLINDER, TILT	1	
28	6G5-43828-00-00	. BODY, RESERVOIR	1	
29	6E5-43829-00-00	. PLUG, RESERVOIR	1	
30	6E5-43863-00-00	. O-RING	1	
31	6G5-43818-00-00	. PIN, LOWER SHOCK MOUNT	1	
32	90386-18M14-00	. BUSH	2	
33	90119-06M42-00	. BOLT, WITH WASHER	6	
34	6G5-43874-00-00	. RING, BACK UP	2	
35	6G5-43864-00-00	.. O-RING	2	
36	6G5-43821-01-00	. SCREW, TRIM CYLINDER END (6G5-43821-00-00)	2	
37	6E5-43865-00-00	. O-RING	2	
38	6E5-43822-01-00	. SEAL, TRIM DUST	2	
39	6G5-43861-00-00	. O-RING	2	
40	6G5-43802-01-00	. VALVE SUB ASSY	2	

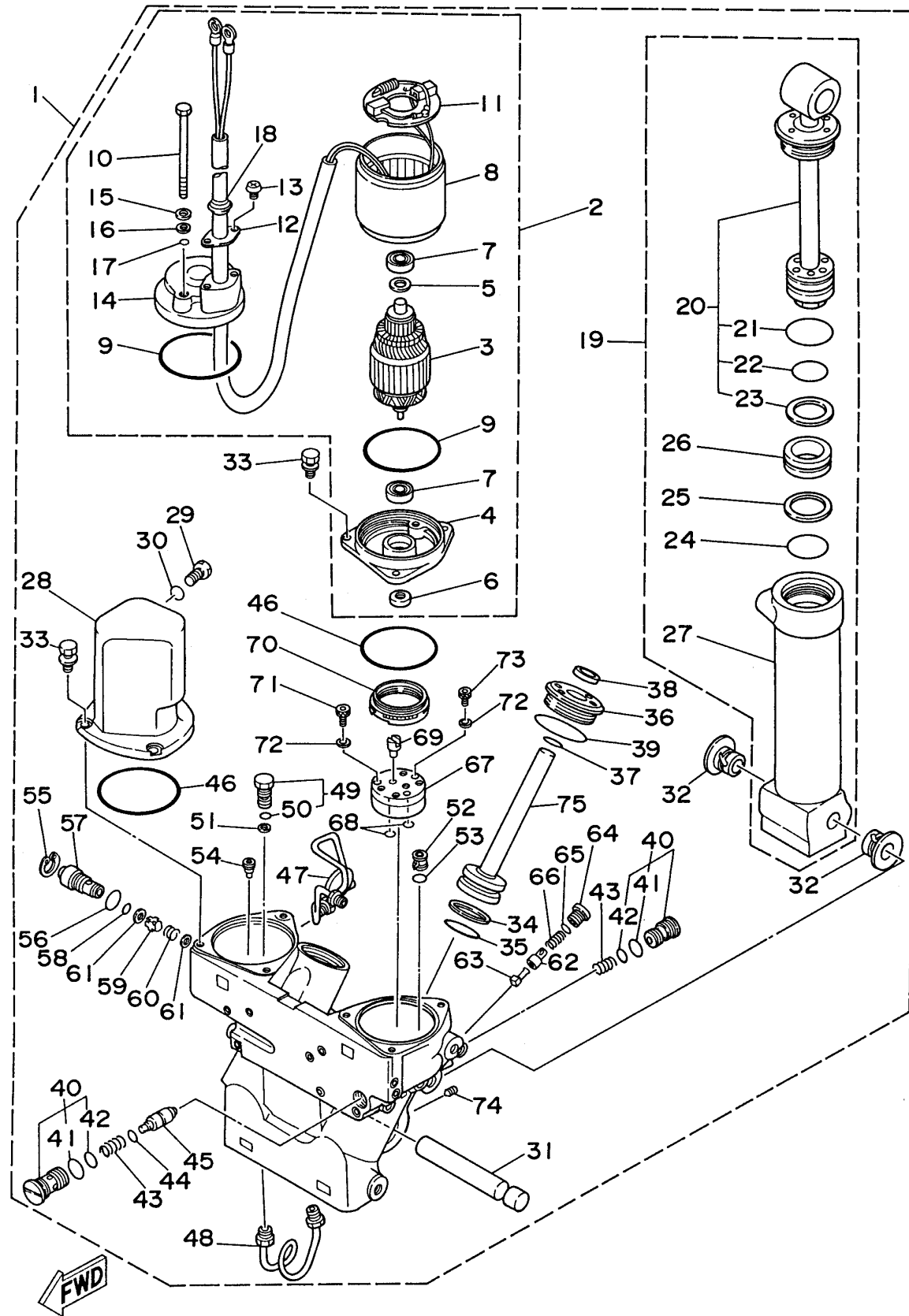
CONTINUED ON NEXT FRAME >



# POWER TRIM TILT ASSEMBLY 1

Ref No.	Part Number	Description	Qty	Remarks
41	6E5-43866-00-00	. . O-RING	1	
42	6E5-43867-00-00	. . O-RING	1	
43	6G5-43894-00-00	. SPRING, SHUTTLE RETURN	2	
44	6E5-43868-00-00	. O-RING	1	
45	6G5-43841-00-00	. PISTON, SHUTTLE	1	
46	6E5-43869-00-00	. O-RING	2	
47	6G5-43835-00-00	. PIPE	1	
48	6G5-43833-00-00	. PIPE	1	
49	6G5-43809-01-00	. SEAT, VALVE COMP 2	1	
50	6E5-43896-00-00	. . . .O-RING	1	
51	6G5-43816-00-00	. FILTER 1	1	
52	6G5-43808-02-00	. SEAT VALVE COMP. 1	1	
53	6E5-43883-00-00	. O-RING	1	
54	6G5-43803-00-00	. CASE VALVE COMP	1	
55	6H1-43875-00-00	. RING, SNAP	1	
56	93210-18M75-00	. O-RING	1	
57	6G5-43845-00-00	. SCREW, MANUAL RELEASE	1	
58	93210-10M74-00	. O-RING	1	
59	6E5-4382A-00-00	. ADAPTER 1	1	
60	6E5-43854-01-00	. SPRING, MANUAL RELEASE	1	

CONTINUED ON NEXT FRAME >



6N6JA-4120  
225tru

## POWER TRIM TILT ASSEMBLY 1

Ref No.	Part Number	Description	Qty	Remarks
61	6E5-43847-00-00	. SEAT, MANUAL VALVE	2	
62	6G5-43849-00-00	. PIN, VALVE SUPPORT	1	
63	6G5-4381A-00-00	. SHAFT	1	
64	6G5-43842-00-00	. SCREW, VALVE SEAT	1	
65	6G5-43866-00-00	. O-RING	1	
66	6E5-43824-01-00	. SPRING, COMPRESSION	1	
67	6G5-43830-01-00	. GEAR PUMP ASSEMBLY	1	
68	6G5-43863-00-00	. O-RING	2	
69	6G5-43831-01-00	. CONNECTOR, SHAFT	1	
70	6G5-43817-00-00	. FILTER 2	1	
71	6G5-43878-01-00	. BOLT, SOCKET	2	
72	90201-05M00-00	. WASHER, PLATE	3	
73	6G5-43888-01-00	. BOLT, SOCKET	1	
74	6G5-43878-10-00	. BOLT, SOCKET	1	
75	6G5-43820-01-00	. PISTON SUB ASSEMBLY	2	