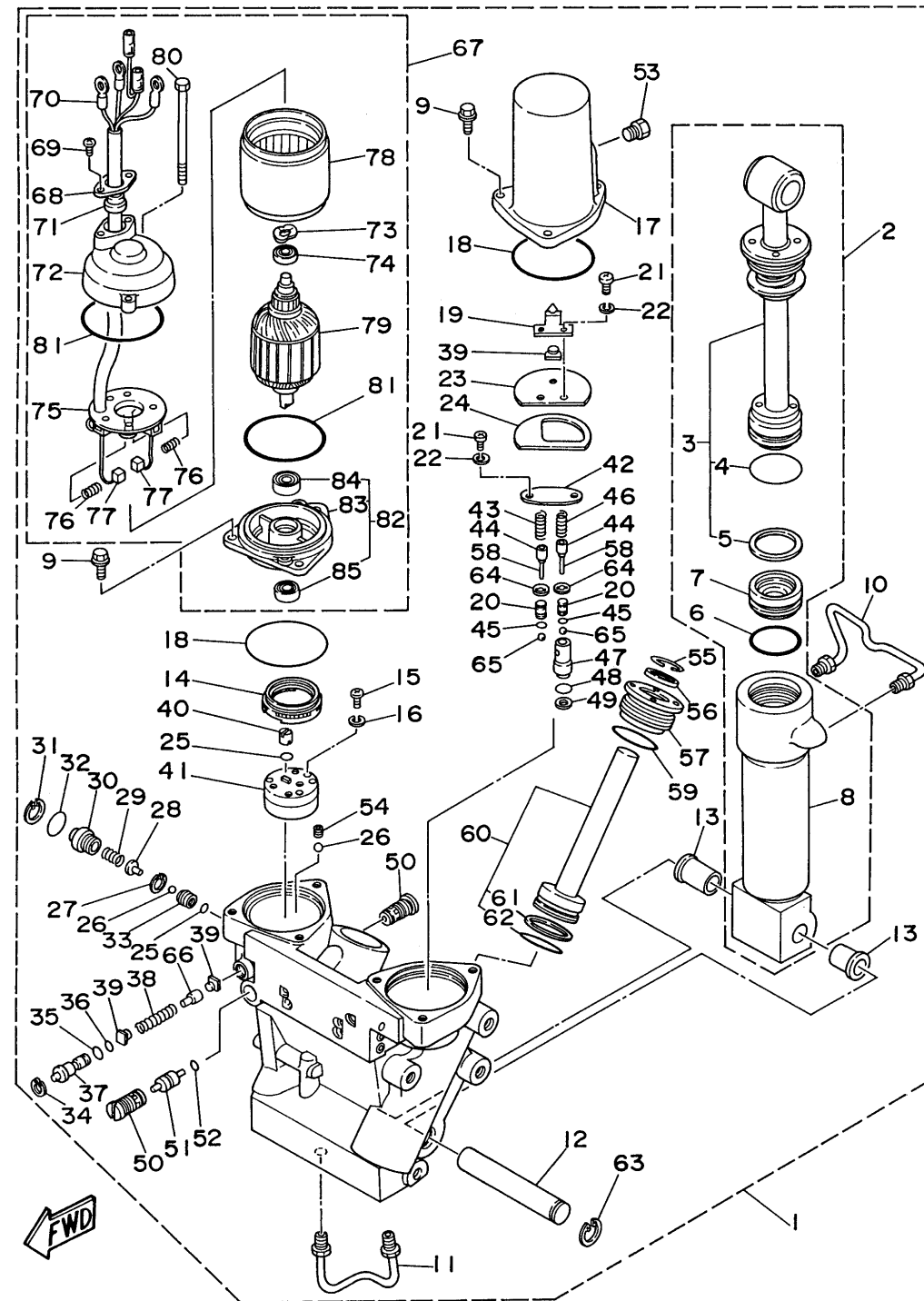


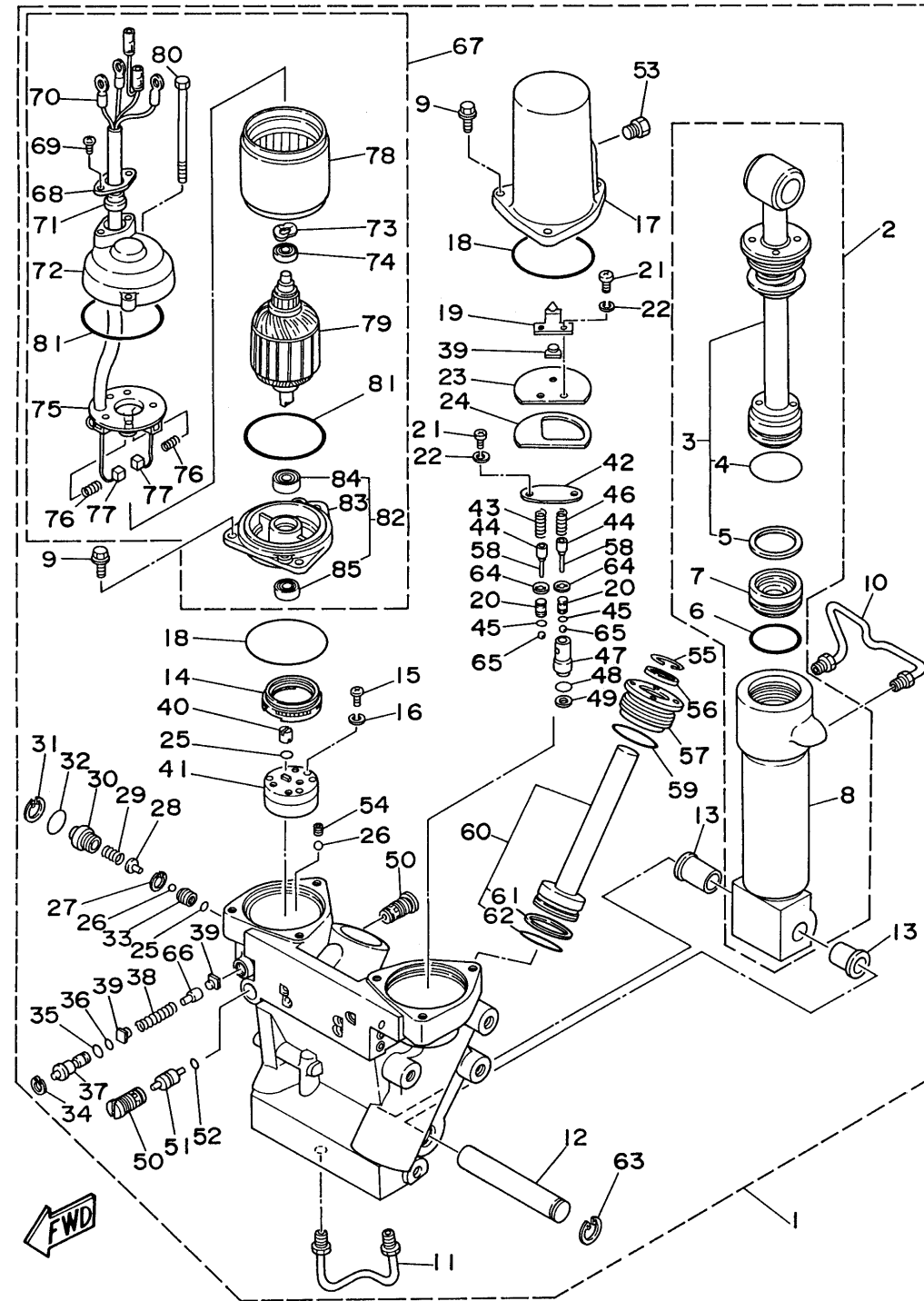
# POWER TRIM TILT ASSEMBLY 1



Ref No.	Part Number	Description	Qty	Remarks
1	61A-43800-23-4D	POWER TRIM & TILT ASSEMBLY	1	
2	61A-43840-01-00	..POWER TILT ASSY	1	
3	61A-43810-00-00	...TILT PISTON SUB ASSY	1	
4	61A-43861-10-00	.. O-RING	1	
5	61A-43871-00-00	...RING, BACK UP	1	
6	6H1-43861-10-00	...O-RING	1	
7	6H1-43814-11-00	...PISTON, FREE	1	
8	61A-43813-01-00	...CYLINDER, TILT	1	
9	97595-06420-00	.. BOLT, WITH WASHER	6	
10	61A-43835-01-00	.. PIPE	1	
11	61A-43833-01-00	..PIPE	1	
12	61A-43818-00-00	.. PIN, LOWER SHOCK MOUNT	1	
13	90386-18M14-00	.. BUSH	2	
14	6H1-43817-00-00	..FILTER 2	1	
15	98511-04030-00	.. SCREW, PAN HEAD	3	
16	92990-04100-00	..WASHER, SPRING	3	
17	61A-43828-00-00	..BODY, RESERVOIR	1	
18	6H1-43869-00-00	.. O-RING	2	
19	61A-4384L-00-00	..SPRING, TRIM DOWN	1	
20	6T4-43851-00-00	..SEAT, RELIEF VALVE	2	

CONTINUED ON NEXT FRAME >

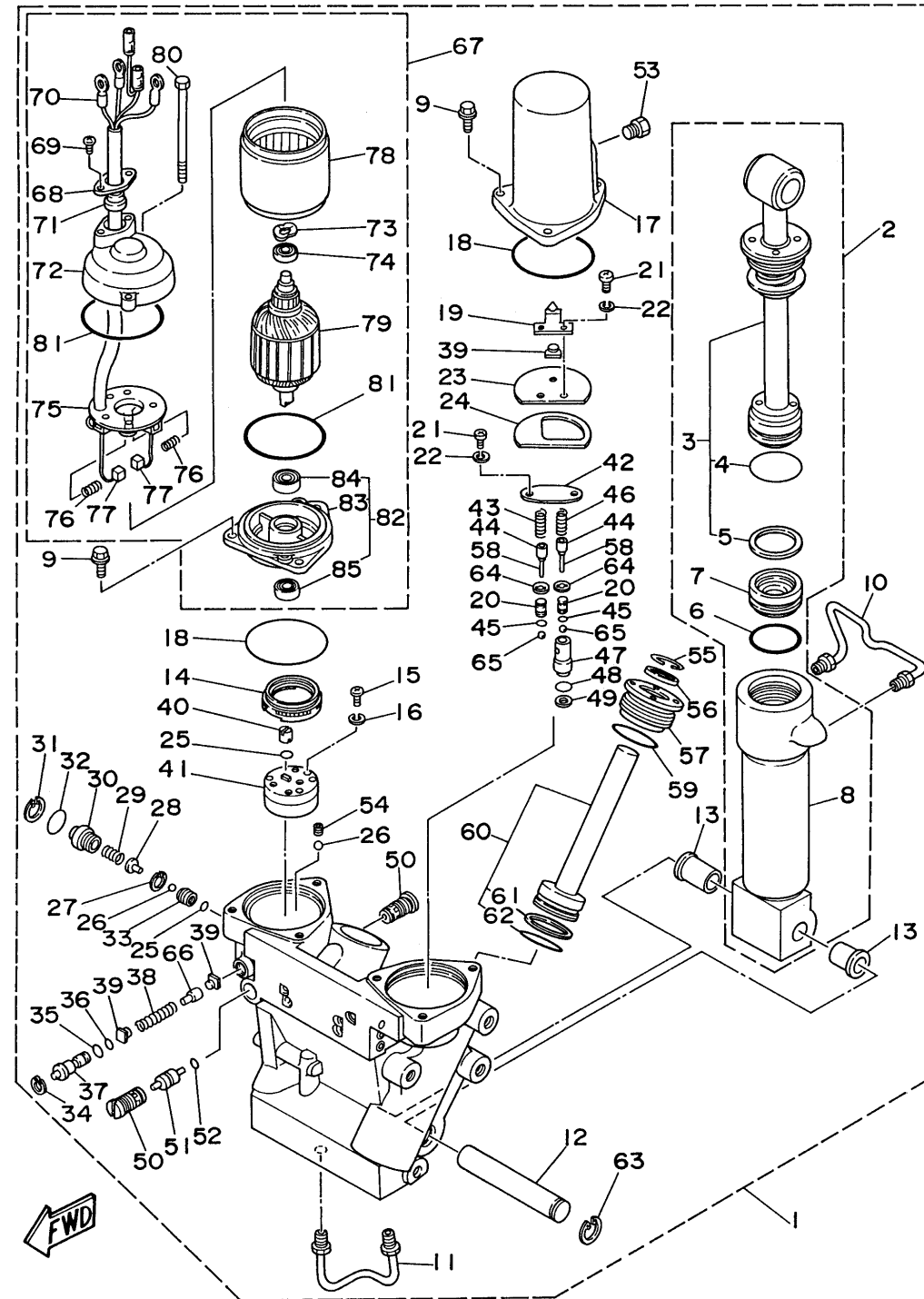
# POWER TRIM TILT ASSEMBLY 1



Ref No.	Part Number	Description	Qty	Remarks
21	98580-05010-00	. .SCREW, PAN HEAD	4	
22	92990-05100-00	. .WASHER, SPRING	4	
23	61A-4384K-00-00	. .PLATE, TRIM DOWN	1	
24	61A-4384J-00-00	. .SEAL, TRIM DOWN	1	
25	93210-06519-00	. .O-RING	2	
26	93505-32038-00	. .BALL	2	
27	61A-43875-00-00	. .RING, SNAP	1	
28	61A-43848-00-00	. .ROD, MANUAL RELEASE	1	
29	61A-43854-00-00	. .SPRING, MANUAL RELEASE	1	
30	61A-43845-00-00	. .SCREW, MANUAL RELEASE	1	
31	6H1-43875-00-00	. .RING, SNAP	1	
32	93210-18322-00	. .O-RING	1	
33	61A-43847-00-00	. .SEAT, MANUAL VALVE	1	
34	6T4-43876-00-00	. .RING, SNAP	1	
35	6H1-43868-00-00	. .O-RING	1	
36	93210-06632-00	. .O-RING	1	
37	6T4-43849-00-00	. .PIN, VALVE SUPPORT	1	
38	61A-4385H-00-00	. .SPRING, SEAL	1	
39	61A-4384F-00-00	. .SEAL, MAIN VALVE	3	
40	6H1-43831-00-00	. .CONNECTOR, SHAFT	1	

CONTINUED ON NEXT FRAME >

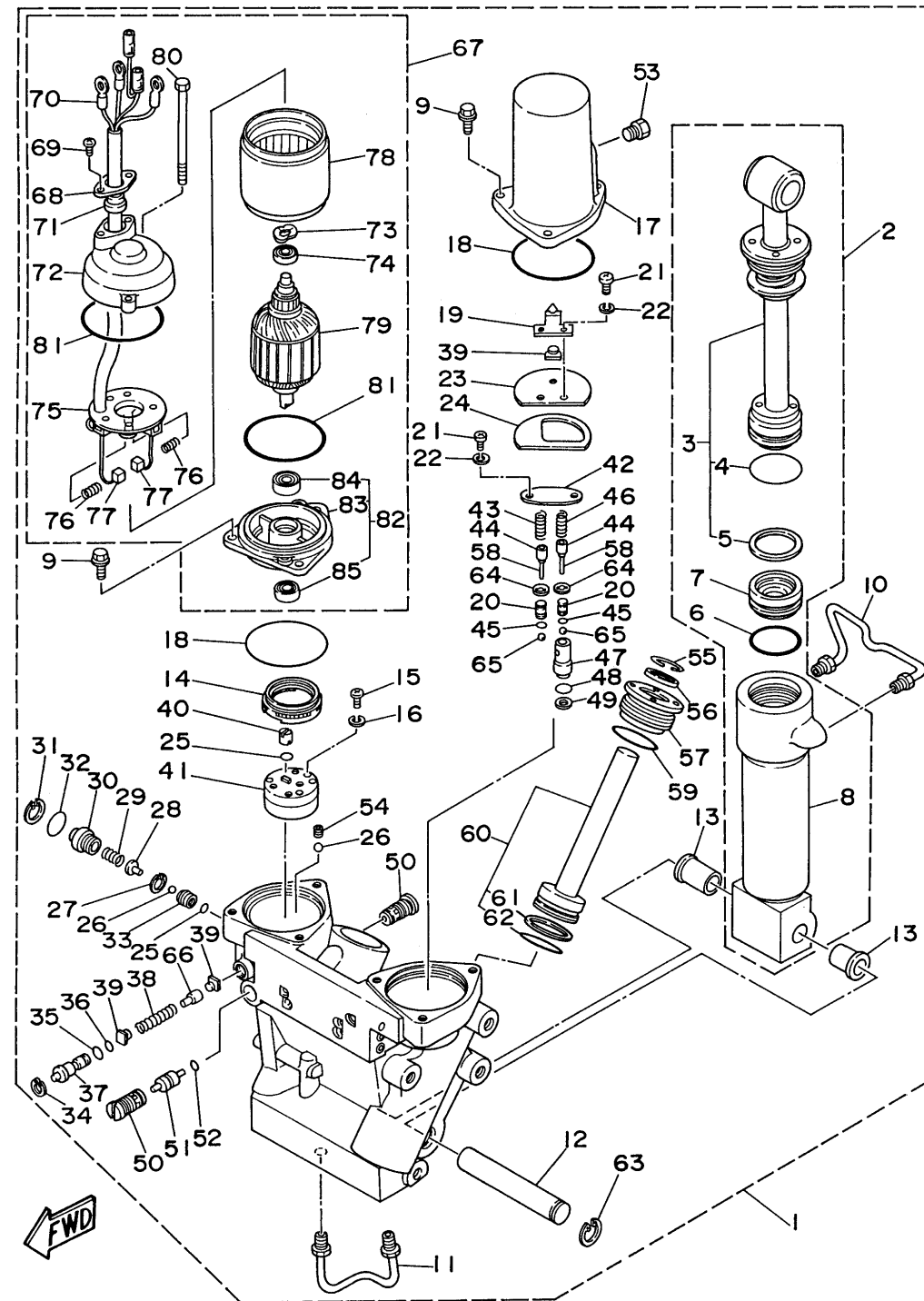
# POWER TRIM TILT ASSEMBLY 1



Ref No.	Part Number	Description	Qty	Remarks
41	6T4-43830-00-00	..GEAR PUMP ASSY	1	
42	61A-4382K-00-00	..CAP, RELIEF VALVE	1	
43	6H1-43856-10-00	..SPRING, DOWN RELIEF	1	
44	6T4-43844-00-00	..PIN, VALVE SUPPORT	2	
45	6T4-4384G-00-00	..SEAL, RELIEF VALVE	2	
46	6T4-43855-00-00	..SPRING, UP RELIEF	1	
47	6T4-43895-00-00	..SEAT, RELIEF VALVE	1	
48	93210-10M74-00	..O-RING	1	
49	6H1-43816-00-00	..FILTER 1	1	
50	6T4-43802-01-00	.. VALVE SUB ASSEMBLY	2	
51	6T4-43841-00-00	..PISTON, SHUTTLE	1	
52	93210-09350-00	..O-RING	1	
53	6H1-43829-00-00	..PLUG, RESERVOIR	1	
54	61A-43878-00-00	.. BOLT, SOCKET	1	
55	6T4-43875-00-00	..RING, SNAP	2	
56	61A-43822-00-00	..SEAL, TRIM DUST	2	
57	61A-43821-00-00	..SCREW, TRIM CYLINDER END	2	
58	91609-10014-00	..PIN, SPRING	2	
59	6H1-43861-10-00	....O-RING	2	
60	61A-43820-01-00	.. PISTON SUB ASSEMBLY	2	

CONTINUED ON NEXT FRAME >

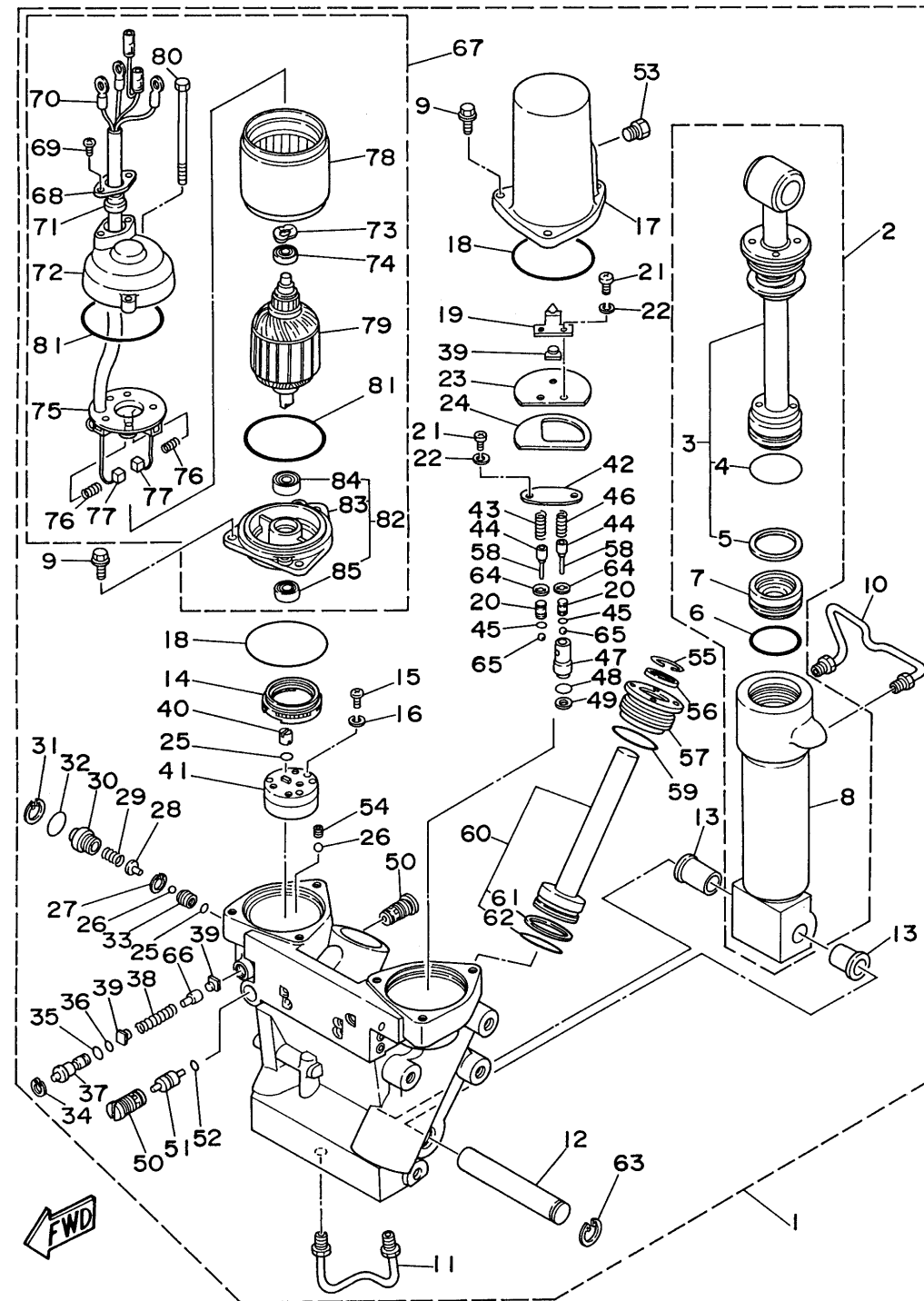
# POWER TRIM TILT ASSEMBLY 1



Ref No.	Part Number	Description	Qty	Remarks
61	61A-43874-00-00	...RING, BACK UP	1	
62	61A-43864-00-00	...O-RING	1	
63	6T4-43876-00-00	..RING, SNAP	1	
64	6T4-43893-00-00	..WASHER	2	
65	93501-08001-00	..BALL	2	
66	61A-4382A-00-00	..ADAPTOR 1	1	
67	61A-43880-01-00	..MOTOR ASSEMBLY	1	
68	6T4-4386J-00-00	..WASHER, SPECIAL	1	
69	90157-05107-00	...SCREW, PAN HEAD	2	
70	61A-43807-00-00	...WIRE SUB ASSY	1	
71	6T4-43885-00-00	..GROMMET	1	
72	61A-43884-00-00	..FRAME, COMMUTATOR END	1	
73	90206-14086-00	..WASHER, WAVE	3	
74	93300-60820-00	..BEARING	1	
75	61A-43806-00-00	...BRUSH HOLDER ASSY	1	
76	61A-4386K-00-00	...SPRING, BRUSH	4	
77	61A-43891-00-00	...BRUSH 1	2	
78	61A-43804-00-00	..STATOR ASSEMBLY	1	
79	61A-43805-01-00	...ARMATURE ASSY	1	
80	61A-43887-00-00	...BOLT, THROUGH	2	

CONTINUED ON NEXT FRAME >

# POWER TRIM TILT ASSEMBLY 1



Ref No.	Part Number	Description	Qty	Remarks
81	93210-72789-00	...O-RING	2	
82	61A-43881-00-00	.. FRAME, END	1	
83	61A-43881-10-00	.. FRAME, END	1	
84	93300-60820-00	.. BEARING	1	
85	93102-08414-00	...OIL SEAL	1	