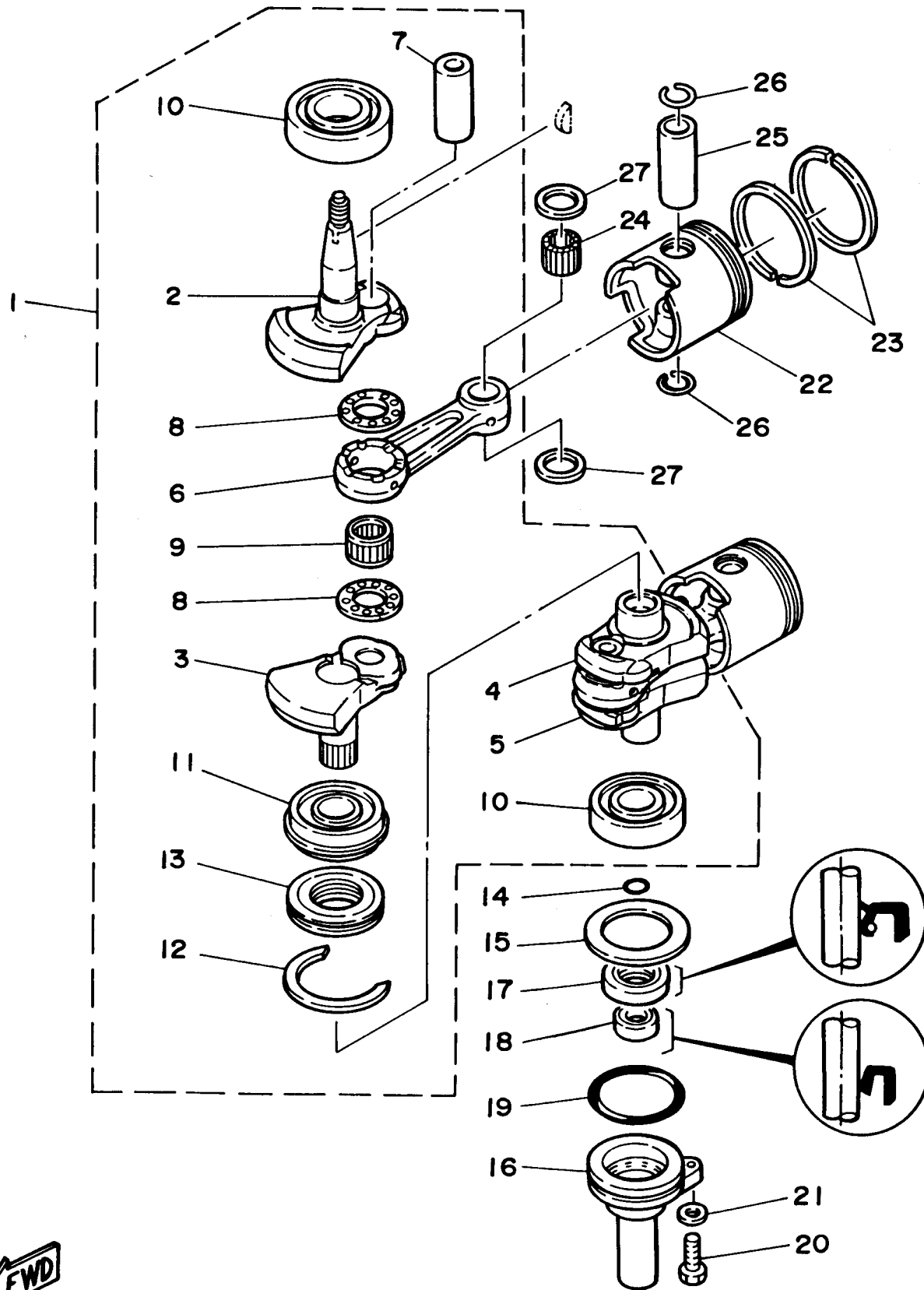


CRANKSHAFT PISTON

Ref No.	Part Number	Description	Qty	Remarks
1	695-11400-00-00	CRANKSHAFT ASSEMBLY	1	
2	695-11412-00-00	. CRANK 1	1	
3	6G0-11422-00-00	. CRANK 2	1	
4	6G0-11432-00-00	. CRANK 3	1	
5	695-11442-00-00	. CRANK 4	1	
6	648-11651-04-00	. ROD, CONNECTING	2	
7	648-11681-00-00	. PIN, CRANK 1	2	
8	90209-22248-00	. WASHER, SPECIAL SHAPE	4	
9	93310-522W0-00	. BEARING, CYLINDRICAL	2	
10	93306-305U3-00	. BEARING	2	
11	93390-00009-00	. BEARING	1	
12	93440-62057-00	. CIRCLIP	1	
13	656-11515-00-00	. SEAL, LABYRINTH 1	1	
14	93210-16275-00	.O-RING	1	
15	90201-50306-00	WASHER, PLATE	1	
16	689-15396-01-5B	HOUSING, OIL SEAL	1	
17	93101-25M35-00	OIL SEAL	1	
18	93101-16M36-00	OIL SEAL	1	
19	93210-57M09-00	.O-RING	1	
20	97395-06022-00	BOLT	1	

CONTINUED ON NEXT FRAME >



CRANKSHAFT PISTON

Ref No.	Part Number	Description	Qty	Remarks
21	92990-06600-00	.WASHER, PLATE	1	
22	664-11631-80-96	PISTON (STD)	2	
22	664-11636-80-00	PISTON (0.50MM O/S)	2	AP
23	664-11610-50-00	PISTON RING SET (0.50MM O/S)	2	AP
23	664-11610-80-00	PISTON RING SET (STD)	2	
24	93602-20M02-00	PIN, DOWEL	62	
25	648-11633-00-00	PIN, PISTON	2	
26	93450-20026-00	CIRCLIP	4	
27	90201-18522-00	WASHER, PLATE	4	

