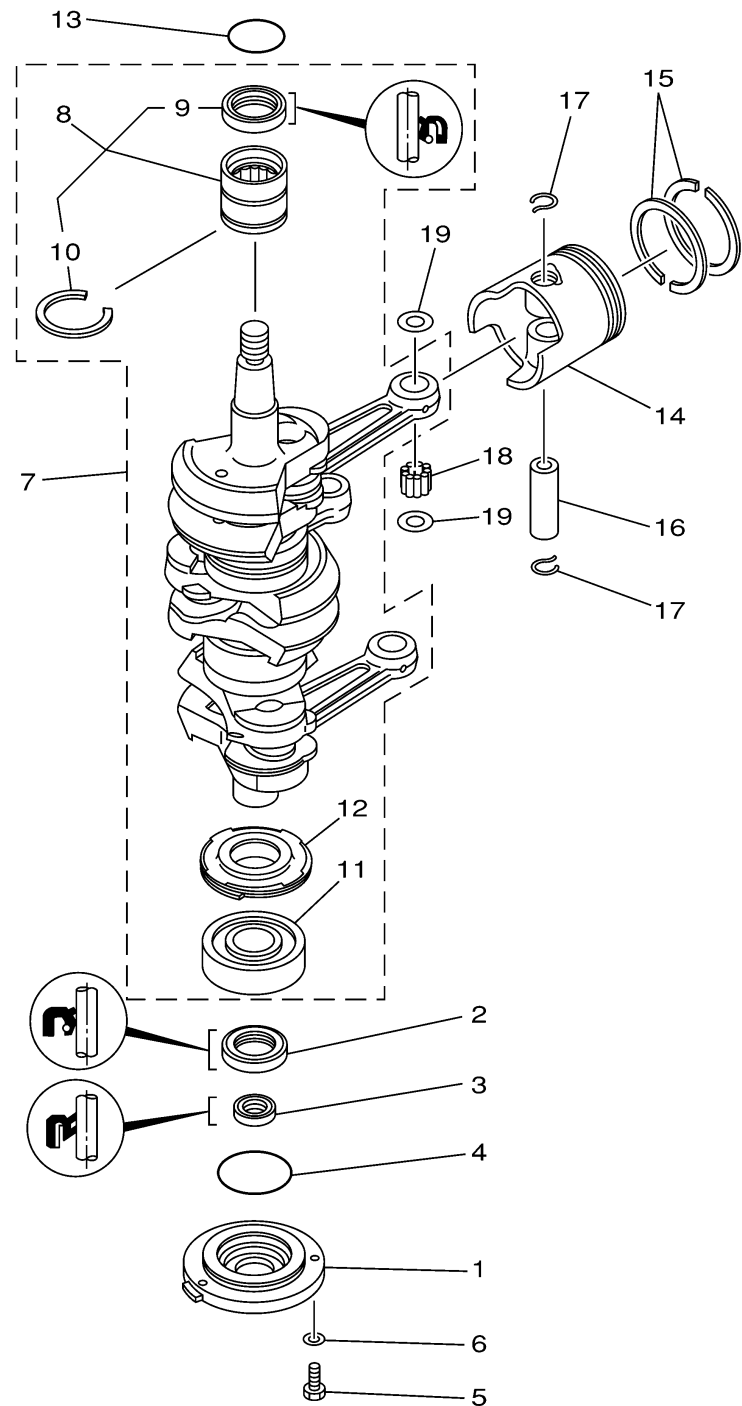


# CRANKSHAFT PISTON



| Ref No. | Part Number     | Description                   | Qty | Remarks  |
|---------|-----------------|-------------------------------|-----|----------|
| 1       | 6H3-15359-00-94 | HOUSING, OIL SEAL             | 1   | (70TR)   |
| 2       | 93102-30M23-00  | OIL SEAL                      | 1   | (70TR)   |
| 3       | 93106-18M01-00  | OIL SEAL                      | 1   | (70TR)   |
| 4       | 93210-65M50-00  | O-RING                        | 1   | (70TR)   |
| 5       | 97095-06020-00  | BOLT                          | 3   | (70TR)   |
| 6       | 92995-06600-00  | WASHER                        | 3   | (70TR)   |
| 7       | 6H3-11400-11-00 | CRANKSHAFT ASSY               | 1   | (70TR)   |
| 8       | 93311-636U6-00  | . .BEARING                    | 1   | (70TR)   |
| 9       | 93102-36M24-00  | . . OIL SEAL                  | 1   | (70TR)   |
| 10      | 93440-49M04-00  | . . CIRCLIP                   | 1   | (70TR)   |
| 11      | 93306-306V1-00  | . .BEARING                    | 1   | (70TR)   |
| 12      | 6H3-11536-00-00 | . GEAR, DRIVE                 | 1   | (70TR)   |
| 13      | 93210-46M16-00  | .O-RING                       | 1   | (70TR)   |
| 14      | 6H3-11636-01-00 | PISTON (0.50MM O.S.)          | 3   | AP(70TR) |
| 14      | 6H3-11631-01-96 | PISTON (STD)                  | 3   | (70TR)   |
| 15      | 6K5-11601-02-00 | PISTON RING SET (STD)         | 3   | (70TR)   |
| 15      | 6K5-11601-22-00 | PISTON RING SET (0.50MM O.S.) | 3   | AP(70TR) |
| 16      | 6H3-11633-00-00 | PIN, PISTON                   | 3   | (70TR)   |
| 17      | 688-11634-10-00 | CLIP, PISTON PIN              | 6   | (70TR)   |
| 18      | 93603-18M09-00  | PIN, DOWEL                    | 84  | (70TR)   |

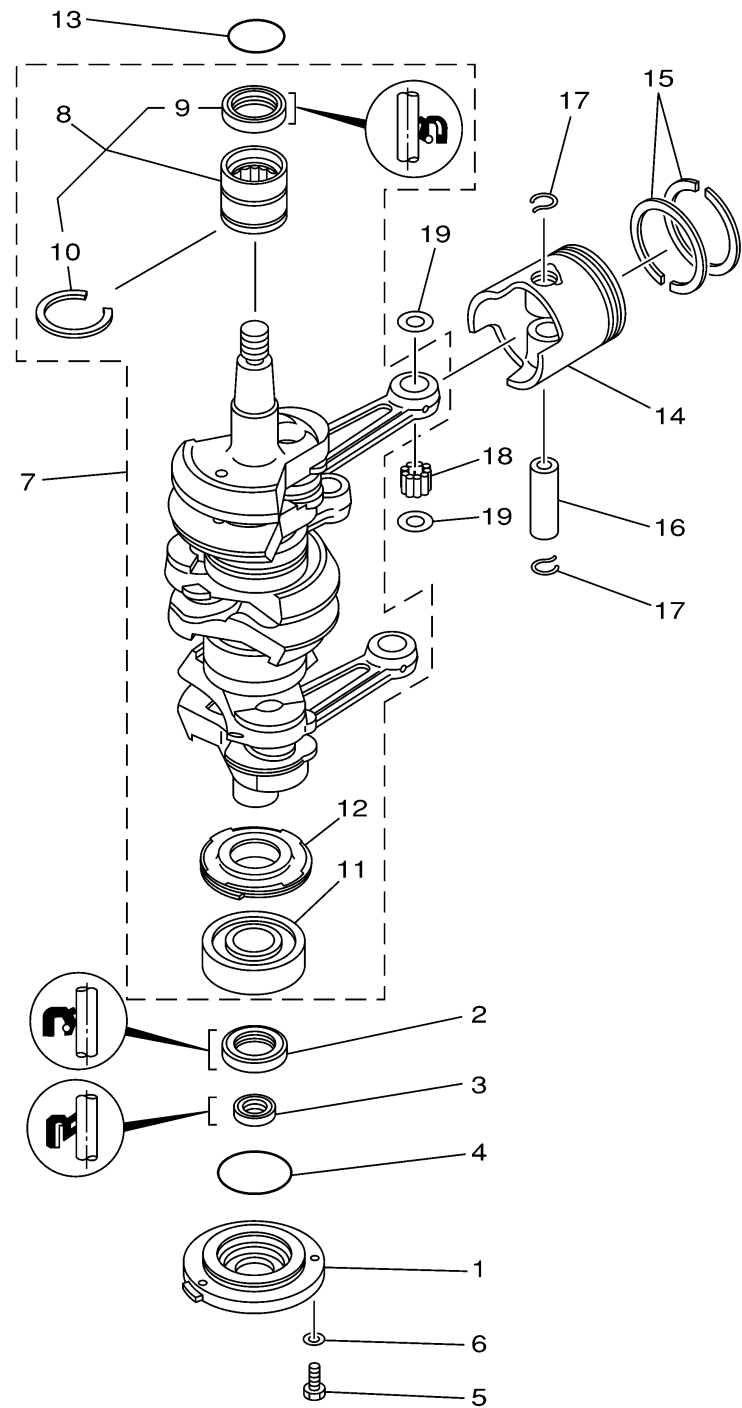
CONTINUED ON NEXT FRAME >



6H30010-9030

# CRANKSHAFT PISTON

| Ref No. | Part Number    | Description   | Qty | Remarks |
|---------|----------------|---------------|-----|---------|
| 19      | 90201-20417-00 | WASHER, PLATE | 6   | (70TR)  |



6H30010-9030