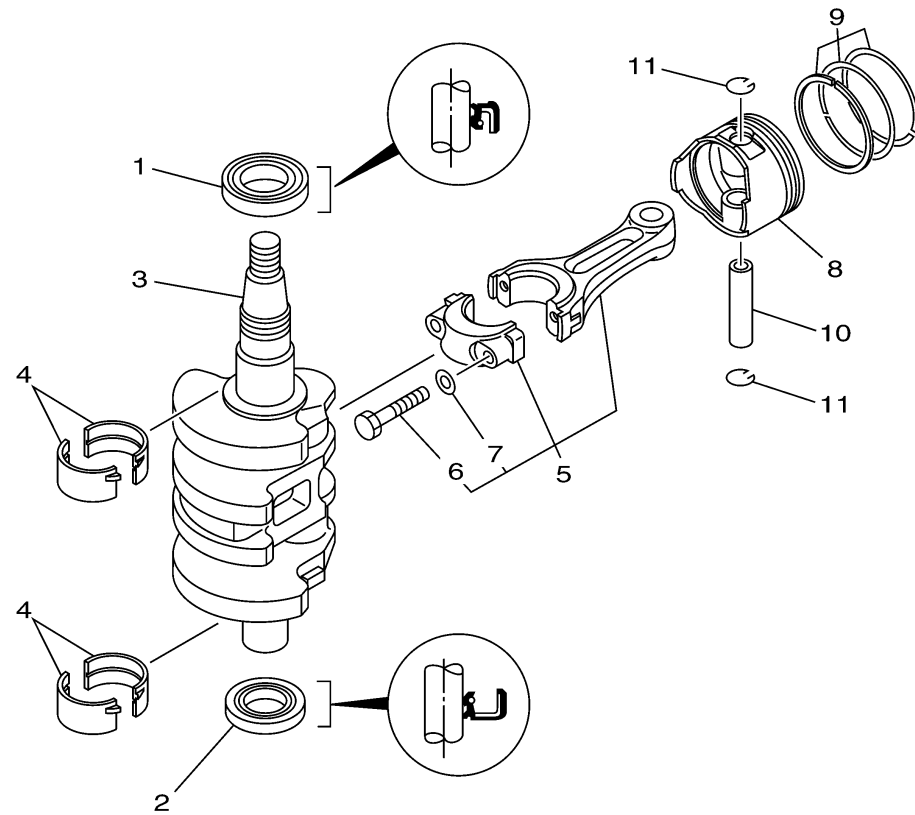


CRANKSHAFT PISTON

Ref No.	Part Number	Description	Qty	Remarks
1	93102-35M51-00	.OIL SEAL	1	(PR)
2	93102-25M52-00	.OIL SEAL	1	(PR)
3	66M-11411-00-00	CRANKSHAFT	1	(PR)
4	66M-11416-00-00	PLANE BEARING, CRANKSHAFT 1	4	UR BROWN (PR)
4	66M-11416-20-00	PLANE BEARING, CRANKSHAFT 1	4	UR BLUE (PR)
4	66M-11416-10-00	PLANE BEARING, CRANKSHAFT 1	4	UR BLACK (PR)
5	66M-11650-00-00	CONNECTING ROD ASSY	2	(PR)
6	66M-11654-00-00	. .BOLT, CONNECTING ROD	2	(PR)
7	90201-07M01-00	. .WASHER, PLATE	2	(PR)
8	66M-11631-00-96	PISTON (STD)	2	(PR)
8	66M-11636-00-00	PISTON (0.50MM O/S)	2	AP (PR)
8	66M-11635-00-00	PISTON (0.25MM O/S)	2	AP (PR)
9	66M-11604-00-00	PISTON RING SET (0.25MM O/S)	2	AP (PR)
9	66M-11605-00-00	PISTON RING SET (0.50MM O/S)	2	AP (PR)
9	66M-11603-00-00	PISTON RING SET (STD)	2	(PR)
10	634-11633-00-00	PIN, PISTON	2	(PR)
11	93450-15023-00	CIRCLIP	4	(PR)



66M0010-8030