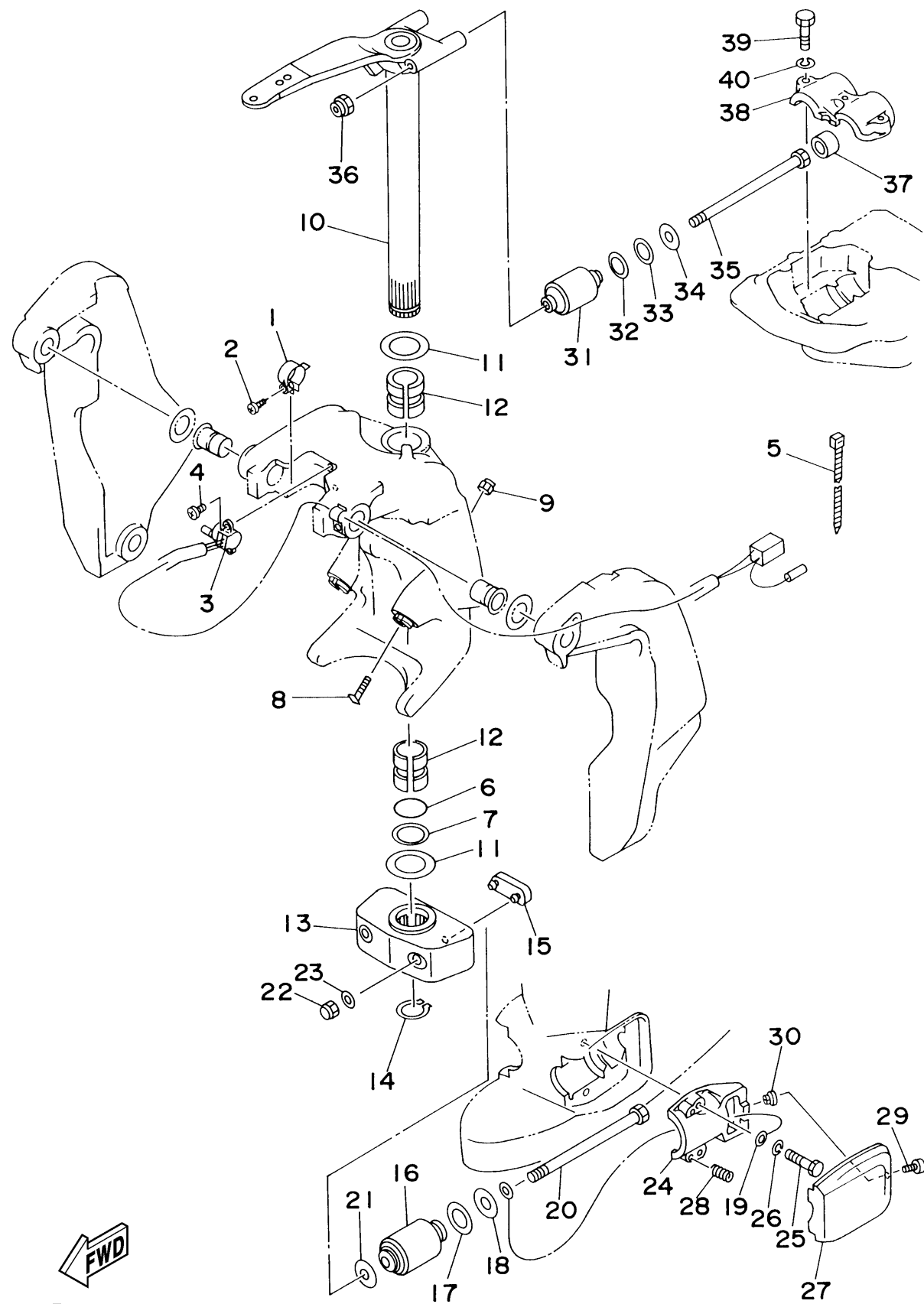


64D0010-7170
150txra

BRACKET 2

Ref No.	Part Number	Description	Qty	Remarks
1	64E-43139-01-00	CAM, TRIM SENDER	1	(150)
2	97780-60525-00	SCREW, TAPPING	1	(150)
3	64E-83672-02-00	TRIM SENDER	1	(150)
4	97885-06016-00	SCREW, PAN HEAD	2	(150)
5	90465-11M10-00	CLAMP	3	(150)
6	93210-37MH7-00	O-RING	1	(150)
7	90202-40M47-00	WASHER, PLATE	1	(150)
8	61A-43376-00-00	BOLT, THRUST RECEIVER	2	(150)
9	95780-10300-00	NUT, FLANGE	2	(150)
10	6E5-42510-B1-8D	STEERING BRACKET ASSY	1	X(150)
11	90201-38M60-00	WASHER, PLATE	2	(150)
12	90386-38M32-00	BUSH	2	(150)
13	6G5-44551-01-8D	HOUSING, LOWER MOUNT RUBBER	1	(150)
14	93410-37M04-00	CIRCLIP	1	(150)
15	6E5-44575-00-00	DAMPER, LOWER MOUNT RUBBER	1	(150)
16	6G5-44555-00-94	MOUNT DAMPER, LOWER SIDE	2	(150)
17	90202-32M19-00	WASHER, PLATE	2	(150)
18	90201-16M55-00	WASHER, PLATE	2	(150)
19	6E5-82149-00-00	WIRE, LEAD 3	1	(150)
20	90109-14M34-00	BOLT	2	(150)

CONTINUED ON NEXT FRAME >



64D0010-7170
150txra

BRACKET 2

Ref No.	Part Number	Description	Qty	Remarks
21	90201-15M58-00	WASHER, PLATE	2	(150)
22	95380-14800-00	NUT	2	(150)
23	92995-14600-00	WASHER	2	(150)
24	6E5-44552-01-94	HOUSING, LOWER MOUNT RUBBER	2	(150)
25	97095-10045-00	BOLT	4	(150)
26	92995-10100-00	WASHER	4	(150)
27	6E5-44553-01-8D	COVER, LOWER MOUNT	2	(150)
28	90501-16M28-00	SPRING, COMPRESSION	4	(150)
29	97885-06016-00	SCREW, PAN HEAD	2	(150)
30	90179-06066-00	NUT	2	(150)
31	6G5-44514-00-94	MOUNT DAMPER, UPPER SIDE	2	(150)
32	90201-26M57-00	WASHER, PLATE	2	(150)
33	90202-26M18-00	WASHER, PLATE	2	(150)
34	90201-14M56-00	WASHER, PLATE	2	(150)
35	90109-12M37-00	BOLT	2	(150)
36	90185-12M12-00	NUT, SELF-LOCKING	2	(150)
37	663-44575-00-00	DAMPER, LOWER MOUNT RUBBER	2	(150)
38	6E5-44511-00-5B	COVER, UPPER MOUNT	1	(150)
39	97095-10045-00	BOLT	3	(150)
40	92995-10100-00	WASHER	3	(150)