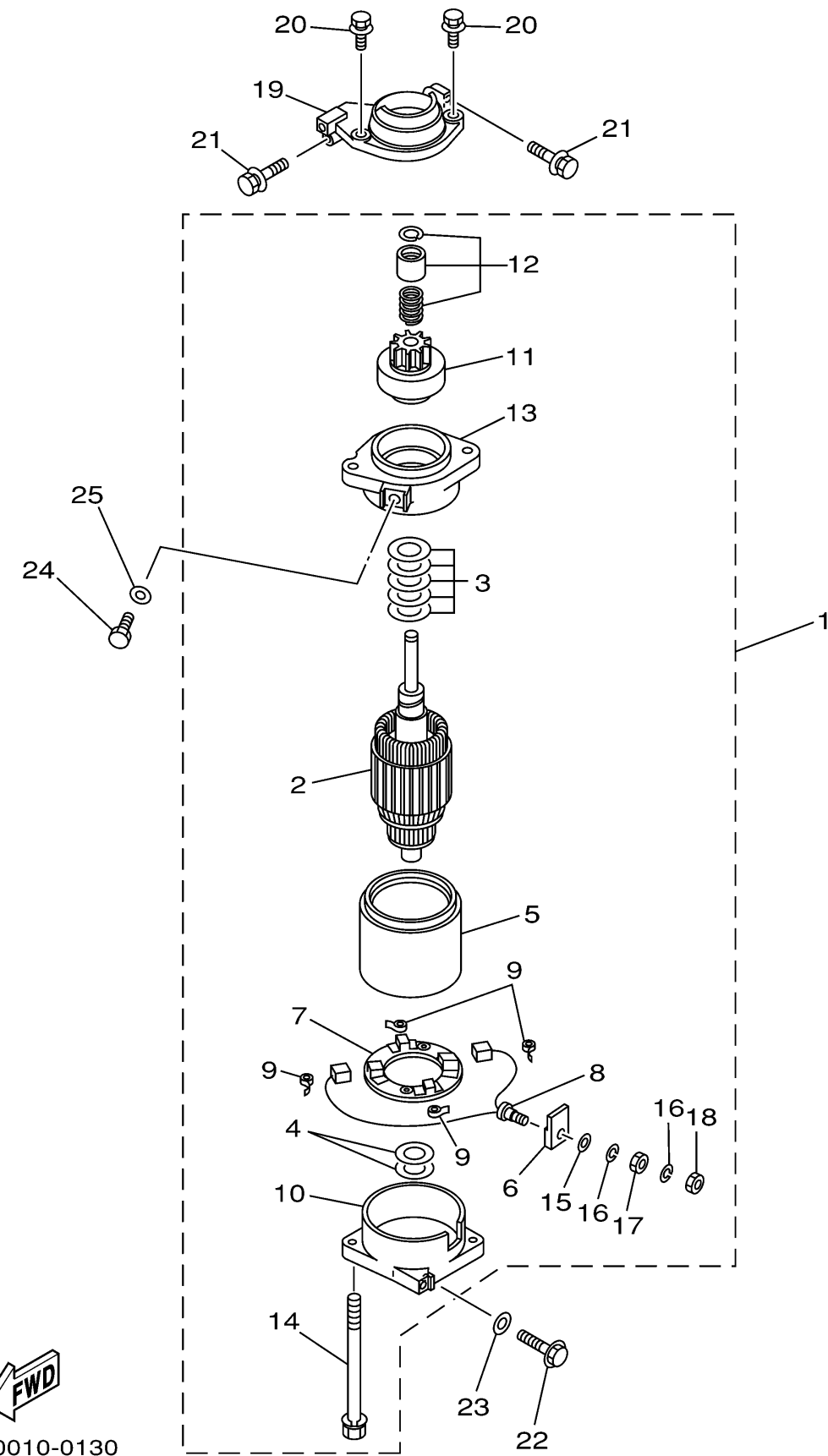


# STARTING MOTOR

Ref No.	Part Number	Description	Qty	Remarks
1	6N7-81800-10-00	STARTING MOTOR ASSY	1	(150)
2	6N7-81850-10-00	..ARMATURE ASSY	1	(150)
3	61A-81809-00-00	..WASHER KIT	1	(150)
4	61A-81824-00-00	..WASHER 2	2	(150)
5	6N7-81810-00-00	..STATOR ASSY	1	(150)
6	6K7-8182G-10-00	..BUSH, TERMINAL	1	(150)
7	6N7-81840-00-00	..BRUSH HOLDER ASSY	1	(150)
8	6N7-81801-00-00	...BRUSH SET	1	(150)
9	6N7-81813-00-00	...SPRING, BRUSH	4	(150)
10	6N7-81820-10-00	..REAR BRACKET ASSY	1	(150)
11	6N7-81807-00-00	..GEAR ASSY, STARTING MOTOR	1	(150)
12	6N7-81857-00-00	..RETAINER	1	(150)
13	6N7-81830-00-00	..FRONT BRACKET ASSY	1	(150)
14	6K7-81826-10-00	..BOLT	2	(150)
15	6E5-8182E-10-00	..WASHER	1	(150)
16	6E5-8182F-10-00	..WASHER	2	(150)
17	6E5-8182A-10-00	..NUT	1	(150)
18	6E5-8182K-10-00	..NUT	1	(150)
19	6R3-81822-00-94	BRACKET, STARTING MOTOR	1	(150)
20	90119-08M76-00	BOLT, WITH WASHER	2	(150)

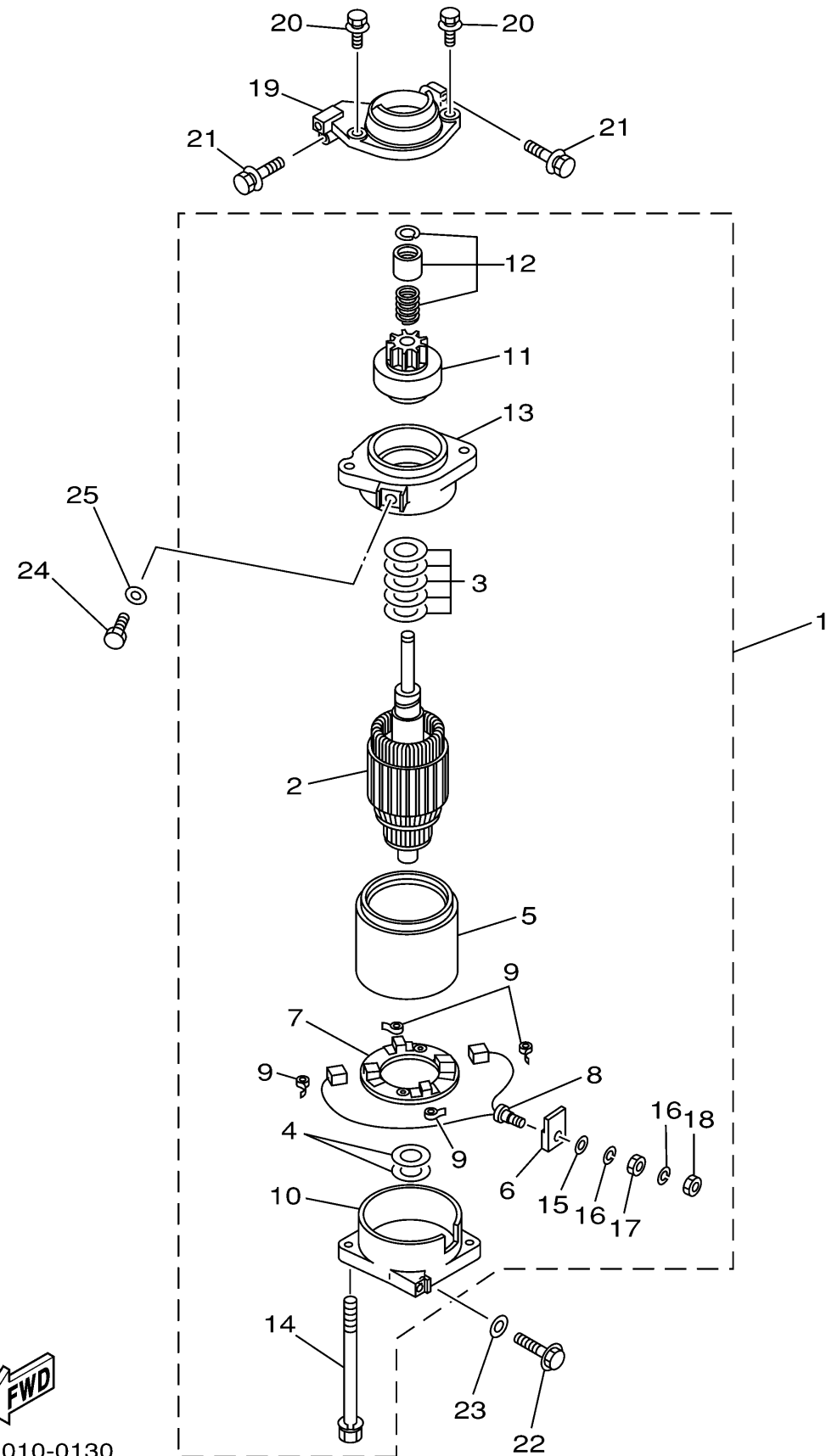
CONTINUED ON NEXT FRAME >



64D0010-0130  
150txra

# STARTING MOTOR

Ref No.	Part Number	Description	Qty	Remarks
21	90119-08M77-00	BOLT, WITH WASHER	2	(150)
22	90119-08M57-00	BOLT, WITH WASHER	1	(150)
23	92990-08600-00	.WASHER, PLATE	1	(150)
24	97095-08016-00	BOLT	1	(150)
25	92995-08600-00	WASHER	1	(150)



64D0010-0130  
150txra