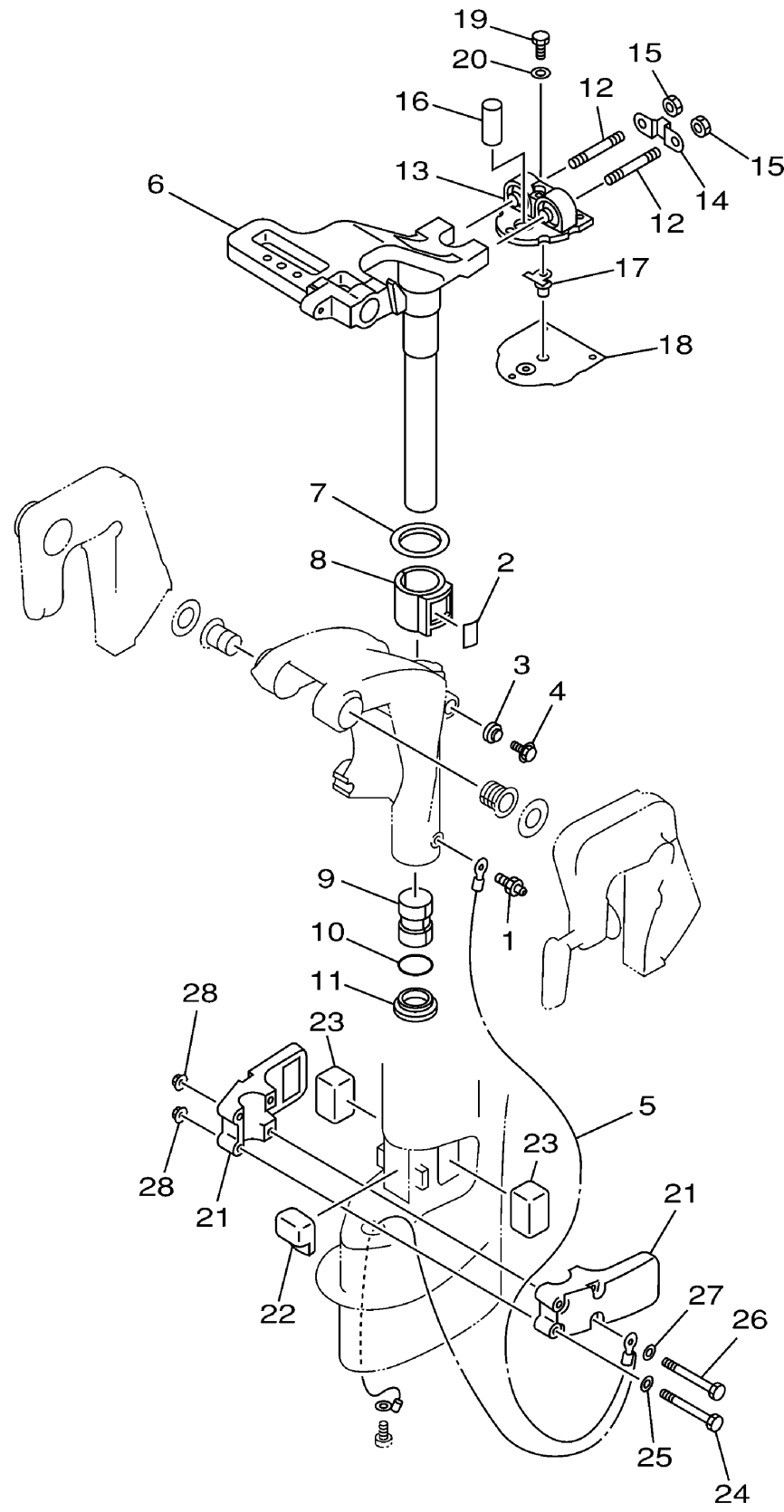


BRACKET 2

Ref No.	Part Number	Description	Qty	Remarks
1	93700-06M03-00	NIPPLE, GREASE	1	(MH)
2	63V-42528-00-00	PLATE, FRICTION	1	(MH)
3	689-43373-01-00	SEAL, DAMPER	1	(MH)
4	90105-06M07-00	.BOLT, FLANGE	1	(MH)
5	63V-82127-00-00	WIRE, LEAD 2	1	(MH)
6	63V-42511-04-4D	BRACKET, STEERING	1	(MH)
7	90209-40008-00	WASHER	1	(MH)
8	65F-42537-00-00	BUSHING, PIVOT SHAFT	1	(MH)
9	90386-30048-00	BUSH	1	(MH)
10	93210-29M94-00	O-RING	1	(MH)
11	90386-30M60-00	BUSH	1	(MH)
12	90116-08M54-00	BOLT, STUD	2	(MH)
13	63V-44514-01-5B	MOUNT DAMPER, UPPER SIDE	1	(MH)
14	63V-44526-00-00	PLATE	1	(MH)
15	95380-08600-00	NUT	2	(MH)
16	90387-16002-00	COLLAR	1	(MH)
17	63V-44366-01-00	DAMPER, WATER SEAL	1	(MH)
18	63V-45114-A0-00	GASKET, UPPER CASING	1	(MH)
19	97095-06018-00	BOLT	3	(MH)
20	92995-06600-00	WASHER	3	(MH)

CONTINUED ON NEXT FRAME >





BRACKET 2

Ref No.	Part Number	Description	Qty	Remarks
21	63V-44551-01-4D	HOUSING, LOWER MOUNT RUBBER	2	(MH)
22	63V-44557-00-00	MOUNT DAMPER, LOWER FRONT	1	(MH)
23	682-44555-00-00	MOUNT DAMPER, LOWER SIDE	2	(MH)
24	97075-06055-00	BOLT	2	(MH)
25	92995-06600-00	WASHER	2	(MH)
26	97075-06075-00	BOLT	2	(MH)
27	92995-06600-00	WASHER	2	(MH)
28	90179-06M28-00	NUT	4	(MH)

