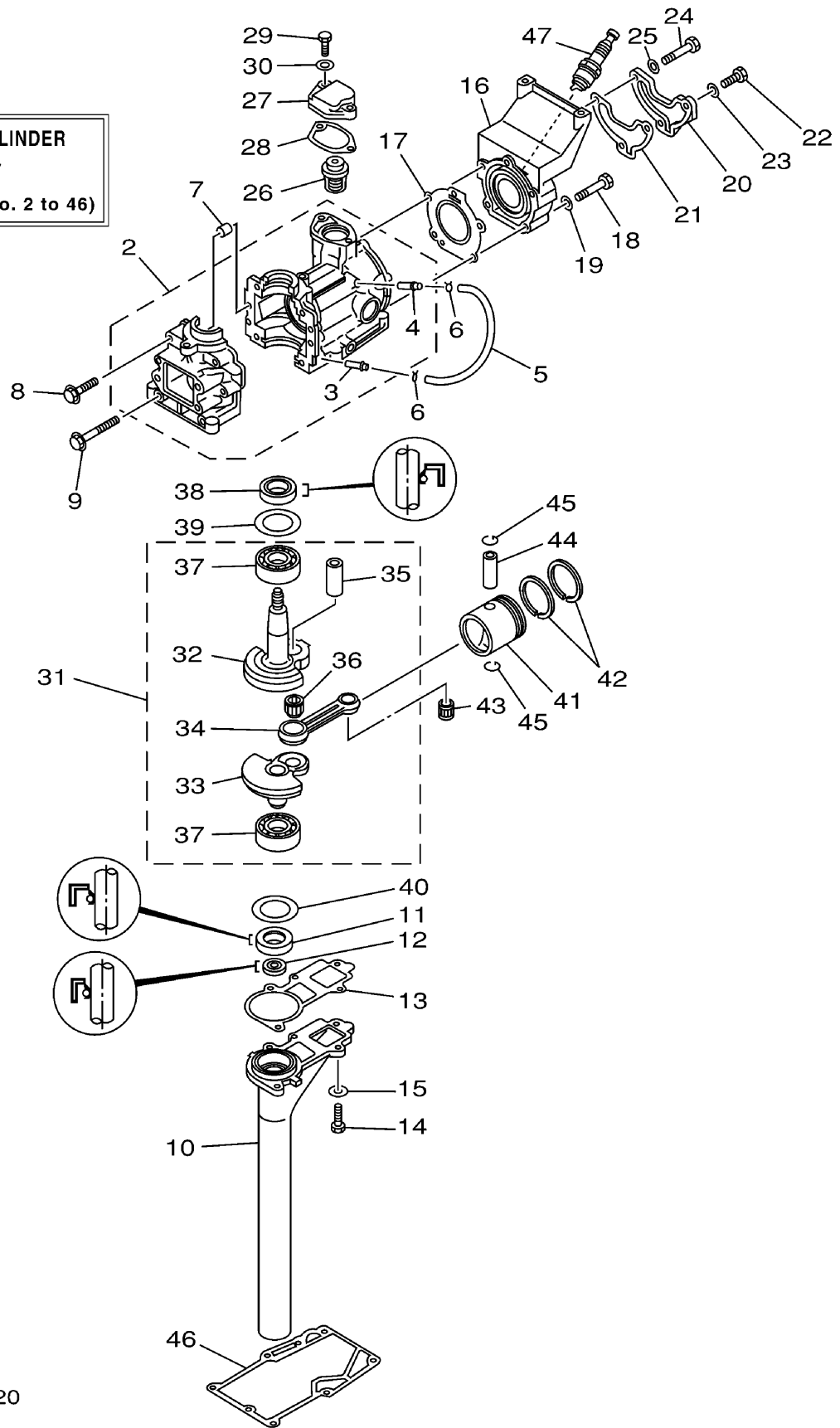


**CRANK CYLINDER
ASSY**
(Fig. 2, Ref. No. 2 to 46)

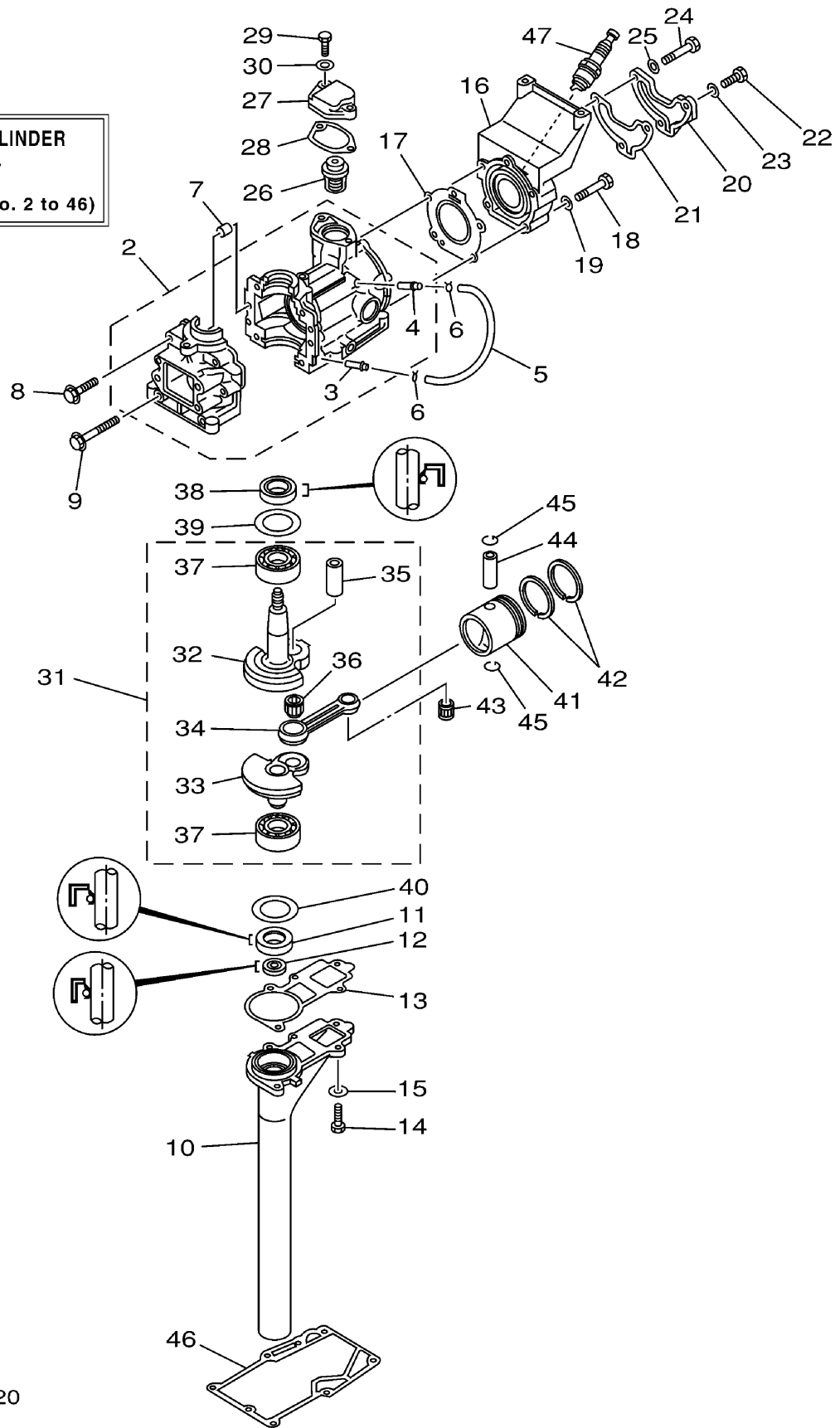


CYLINDER CRANKCASE

Ref No.	Part Number	Description	Qty	Remarks
1	6L5-W0090-01-1S	CRANK CYLINDER ASSY	1	(3MH)
2	6L5-15100-00-1S	CRANKCASE ASSY	1	(3MH)
3	624-14485-00-00	.PIPE, JOINT	1	(3MH)
4	6E5-11372-00-00	.NIPPLE, HOSE	1	(3MH)
5	90445-07M29-00	HOSE (L135)	1	(3MH)
6	90467-06016-00	CLIP	2	(3MH)
7	93606-12019-00	PIN, DOWEL	2	(3MH)
8	90105-06M16-00	.BOLT, FLANGE	4	(3MH)
9	90105-06M40-00	BOLT, FLANGE	2	(3MH)
10	6L5-15396-00-94	HOUSING, OIL SEAL	1	(3MH)
11	93101-20M29-00	OIL SEAL	1	(3MH)
12	93101-09M42-00	.OIL SEAL	1	(3MH)
13	6L5-15369-A0-00	GASKET, OIL SEAL HOUSING	1	(3MH)
14	97095-06020-00	BOLT	5	(3MH)
15	92995-06600-00	WASHER	5	(3MH)
16	6L5-11111-00-1S	HEAD, CYLINDER 1	1	(3MH)
17	6L5-11181-A2-00	GASKET, CYLINDER HEAD 1	1	(3MH)
18	97013-06028-00	BOLT	3	(3MH)
19	92903-06600-00	WASHER, PLATE	3	(3MH)
20	6L5-11191-00-1S	COVER, CYLINDER HEAD 1	1	(3MH)

CONTINUED ON NEXT FRAME >

**CRANK CYLINDER
ASSY**
(Fig. 2, Ref. No. 2 to 46)



CYLINDER CRANKCASE

Ref No.	Part Number	Description	Qty	Remarks
21	6L5-11193-A1-00	GASKET, HEAD COVER 1	1	(3MH)
22	97013-06020-00	BOLT	1	(3MH)
23	92903-06600-00	WASHER, PLATE	1	(3MH)
24	97013-06050-00	BOLT	2	(3MH)
25	92903-06600-00	WASHER, PLATE	2	(3MH)
26	6E5-12411-01-00	THERMOSTAT	1	(3MH)
27	6L5-12413-00-1S	COVER, THERMOSTAT	1	(3MH)
28	6L5-12414-A1-00	GASKET, COVER	1	(3MH)
29	97013-06020-00	BOLT	2	(3MH)
30	92903-06600-00	WASHER, PLATE	2	(3MH)
31	6L5-11400-00-00	CRANKSHAFT ASSY	1	(3MH)
32	6L5-11412-00-00	. CRANK 1	1	(3MH)
33	6L5-11422-00-00	. CRANK 2	1	(3MH)
34	6L5-11651-00-00	. ROD, CONNECTING	1	(3MH)
35	6L5-11681-00-00	. PIN, CRANK 1	1	(3MH)
36	93310-416N7-00	. BEARING	1	(3MH)
37	93306-204U0-00	. BEARING	2	(3MH)
38	93102-20M06-00	OIL SEAL	1	(3MH)
39	90201-32M00-00	WASHER, PLATE	1	(3MH)
40	90201-32M01-00	WASHER, PLATE	1	(3MH)

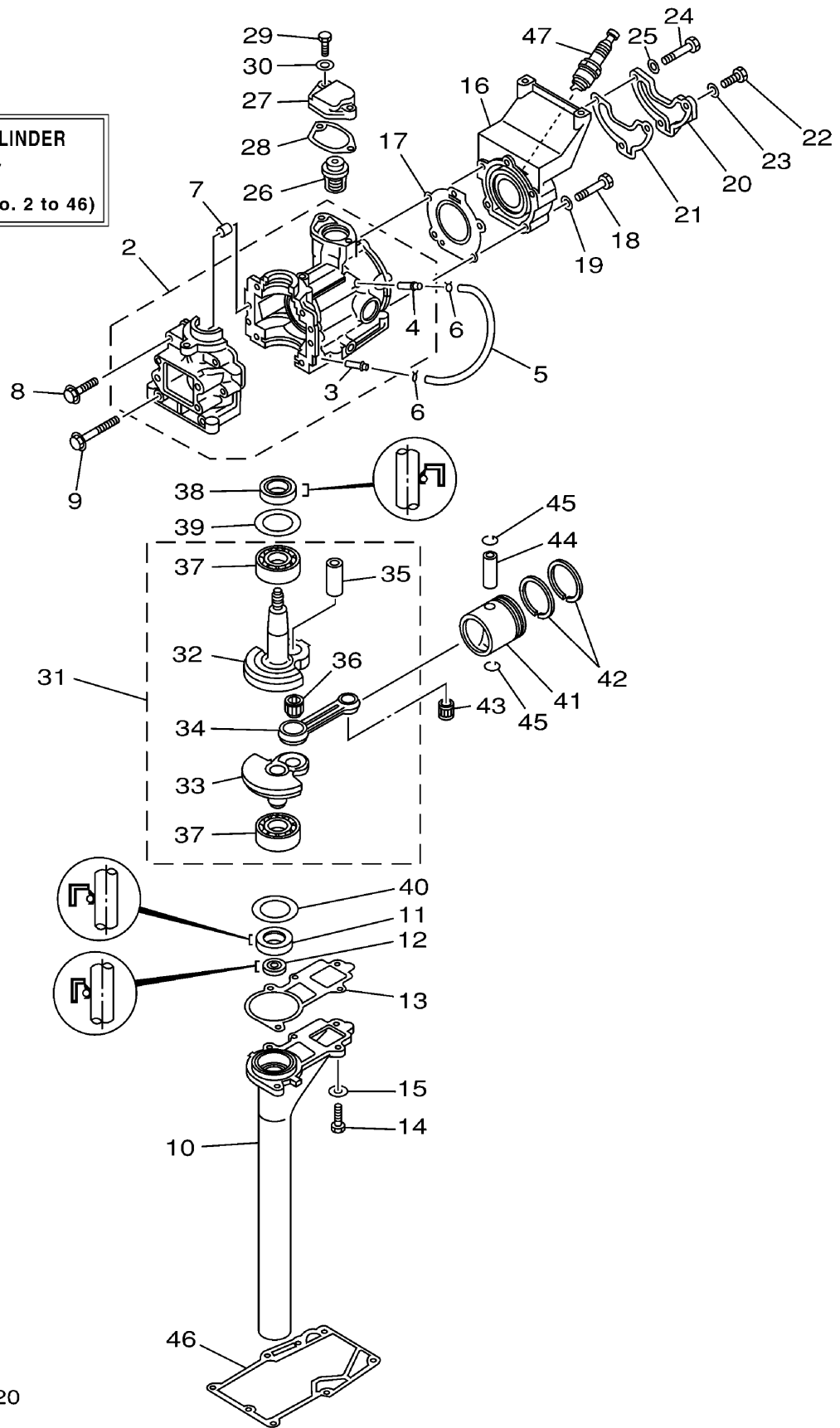
CONTINUED ON NEXT FRAME >



6L51100-2020

3msha

1
CRANK CYLINDER
ASSY
 (Fig. 2, Ref. No. 2 to 46)



CYLINDER CRANKCASE

Ref No.	Part Number	Description	Qty	Remarks
41	6L5-11631-00-96	PISTON (STD)	1	(3MH)
41	6L5-11636-00-00	PISTON (0.50MM O/S)	1	AP(3MH)
41	6L5-11635-00-00	PISTON (0.25MM O/S)	1	AP(3MH)
42	6L5-11610-10-00	PISTON RING SET (0.25MM O/S)	1	AP(3MH)
42	6L5-11610-00-00	PISTON RING SET (STD)	1	(3MH)
42	6L5-11610-20-00	PISTON RING SET (0.50MM O/S)	1	AP(3MH)
43	93310-112U0-00	BEARING	1	(3MH)
44	6L5-11633-00-00	PIN, PISTON	1	(3MH)
45	93450-13022-00	CIRCLIP	2	(3MH)
46	6L5-45113-A1-00	GASKET, UPPER CASING	1	(3MH)
47	NGK-B6HS1-00-00	PLUG SPARK (NGK B6HS-10)	1	(3MH)



6L51100-2020

3msha

A9