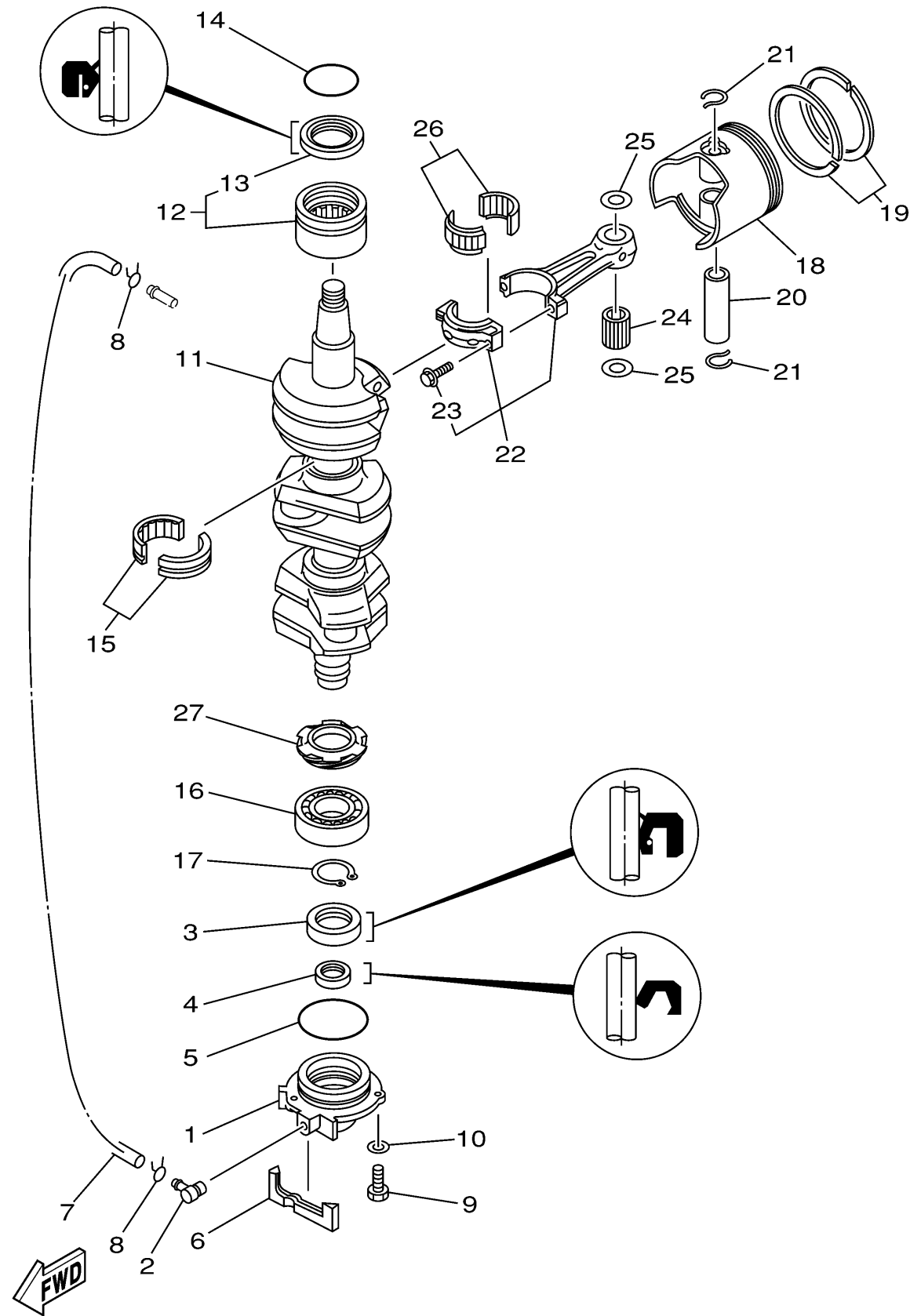


CRANKSHAFT PISTON

Ref No.	Part Number	Description	Qty	Remarks
1	6H1-15359-01-94	HOUSING, OIL SEAL	1	(90TR)
2	688-11370-00-00	CHECK VALVE ASSY	1	(90TR)
3	93102-30M05-00	.OIL SEAL	1	(90TR)
4	93104-20M02-00	OIL SEAL	1	(90TR)
5	93210-62269-00	O-RING	1	(90TR)
6	688-15379-00-00	SEAL, CRANKCASE	1	(90TR)
7	90445-07M86-00	HOSE (L460)	1	(90TR)
8	90467-06016-00	CLIP	2	(90TR)
9	97095-06020-00	BOLT	3	(90TR)
10	92995-06600-00	WASHER	3	(90TR)
11	688-11411-01-00	CRANKSHAFT	1	(90TR)
12	93310-636U4-00	BEARING	1	(90TR)
13	93102-36M02-00	. .OIL SEAL	1	(90TR)
14	93210-46M16-00	.O-RING	1	(90TR)
15	93310-835U8-00	BEARING	2	(90TR)
16	93306-206U5-00	BEARING	1	(90TR)
17	93410-32M00-00	CIRCLIP	1	(90TR)
18	6H1-11635-03-00	PISTON (0.25MM O/S)	3	AP(90TR)
18	6H1-11636-03-00	PISTON (0.50MM O/S)	3	AP(90TR)
18	6H1-11631-03-95	PISTON (STD)	3	(90TR)

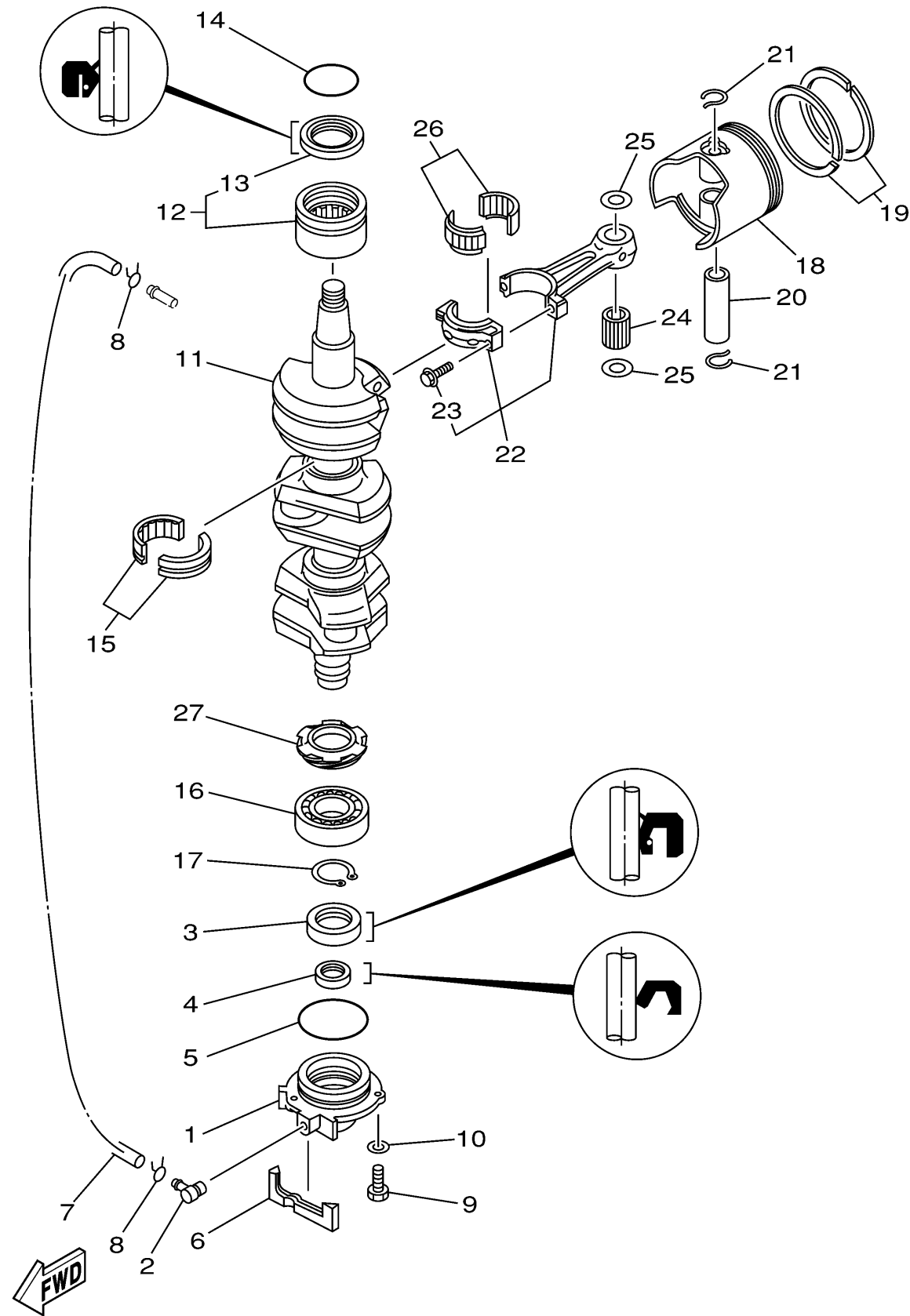
CONTINUED ON NEXT FRAME >



6H10010-0031
90tira

CRANKSHAFT PISTON

Ref No.	Part Number	Description	Qty	Remarks
19	688-11603-A0-00	PISTON RING SET (STD)	3	(90TR)
19	688-11605-A0-00	PISTON RING SET (0.50MM O/S)	3	AP(90TR)
19	688-11604-A0-00	PISTON RING SET (0.25MM O/S)	3	AP(90TR)
20	663-11633-00-00	PIN, PISTON	3	(90TR)
21	688-11634-10-00	CLIP, PISTON PIN	6	(90TR)
22	688-11650-03-00	CONNECTING ROD ASSY	3	(90TR)
23	90109-08022-00	..BOLT	2	(90TR)
24	93603-21111-00	PIN, DOWEL	84	(90TR)
25	90201-20417-00	WASHER, PLATE	6	(90TR)
26	93310-730V8-00	BEARING	3	(90TR)
27	6H1-11536-00-00	GEAR, DRIVE	1	(90TR)



6H10010-0031
90tira