

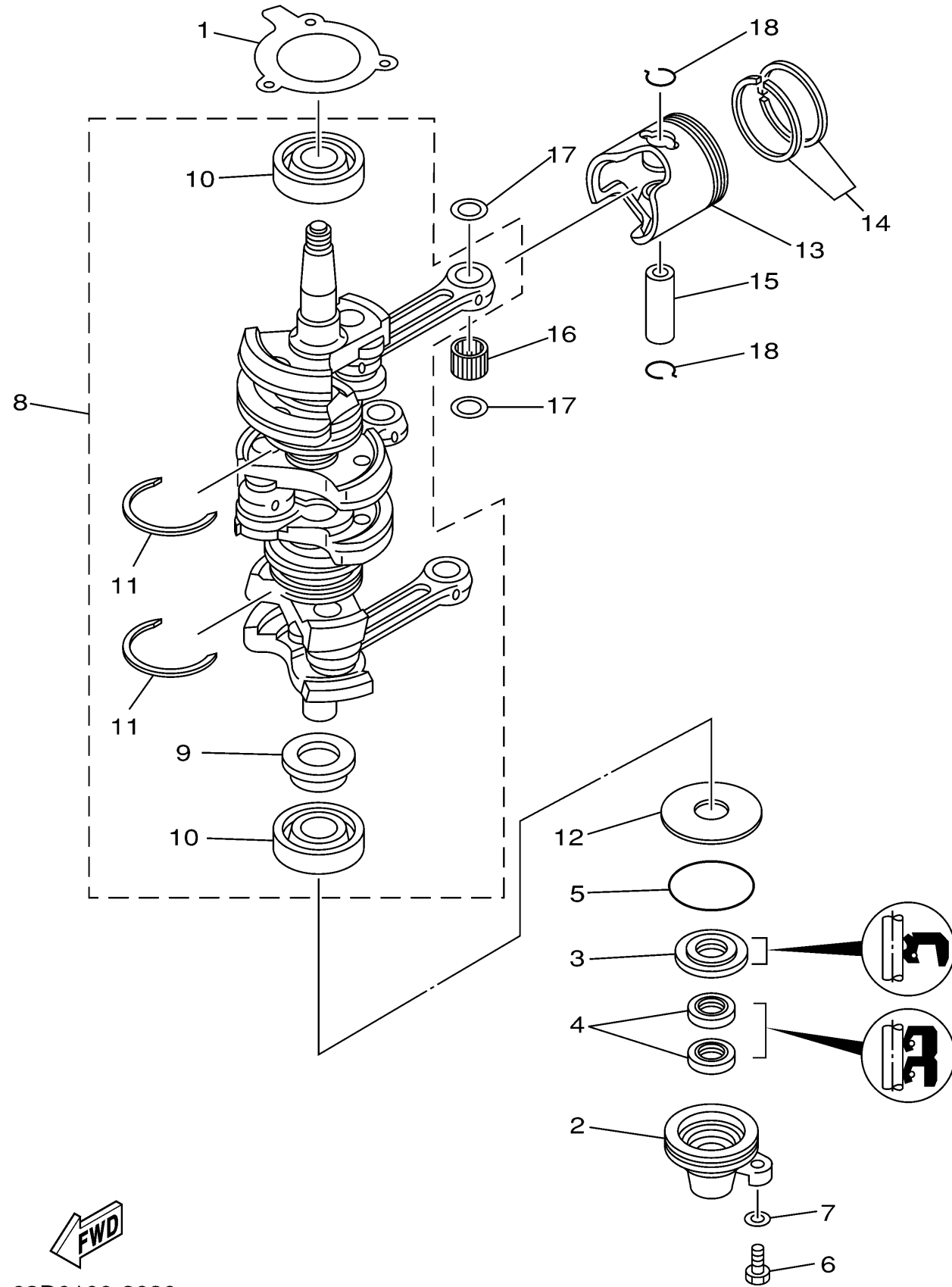
CRANKSHAFT PISTON

Ref No.	Part Number	Description	Qty	Remarks
1	6H4-15369-A1-00	GASKET, OIL SEAL HOUSING	1	(C40)
2	6H4-15396-03-5B	HOUSING, OIL SEAL	1	(C40)
3	93102-25M28-00	OIL SEAL	1	(C40)
4	93104-16M01-00	.OIL SEAL	2	(C40)
5	93210-58M21-00	.O-RING	1	(C40)
6	97095-06020-00	BOLT	1	(C40)
7	92995-06600-00	WASHER	1	(C40)
8	6H4-11400-04-00	CRANKSHAFT ASSY	1	(C40)
9	6H4-11445-00-00	.SPACER	1	(C40)
10	93306-305U8-00	.BEARING	2	(C40)
11	93440-62057-00	.CIRCLIP	2	(C40)
12	90201-50306-00	WASHER, PLATE	1	(C40)
13	6H4-11635-01-00	PISTON (0.25MM O/S)	3	AP(C40)
13	6H4-11631-01-95	PISTON (STD)	3	(C40)
13	6H4-11636-01-00	PISTON (0.50MM O/S)	3	AP(C40)
14	63D-11605-00-00	PISTON RING SET (0.50MM O/S)	3	AP(C40)
14	63D-11604-00-00	PISTON RING SET (0.25MM O/S)	3	AP(C40)
14	63D-11603-00-00	PISTON RING SET (STD)	3	(C40)
15	648-11633-00-00	PIN, PISTON	3	(C40)
16	93602-20M02-00	PIN, DOWEL	93	(C40)

CONTINUED ON NEXT FRAME >



63D0100-8030
c40tra



CRANKSHAFT PISTON

Ref No.	Part Number	Description	Qty	Remarks
17	6H4-11641-00-00	WASHER, PISTON PIN	6	(C40)
18	6H4-11634-01-00	CLIP, PISTON PIN	6	(C40)



63D0100-8030
c40ltra

A10