

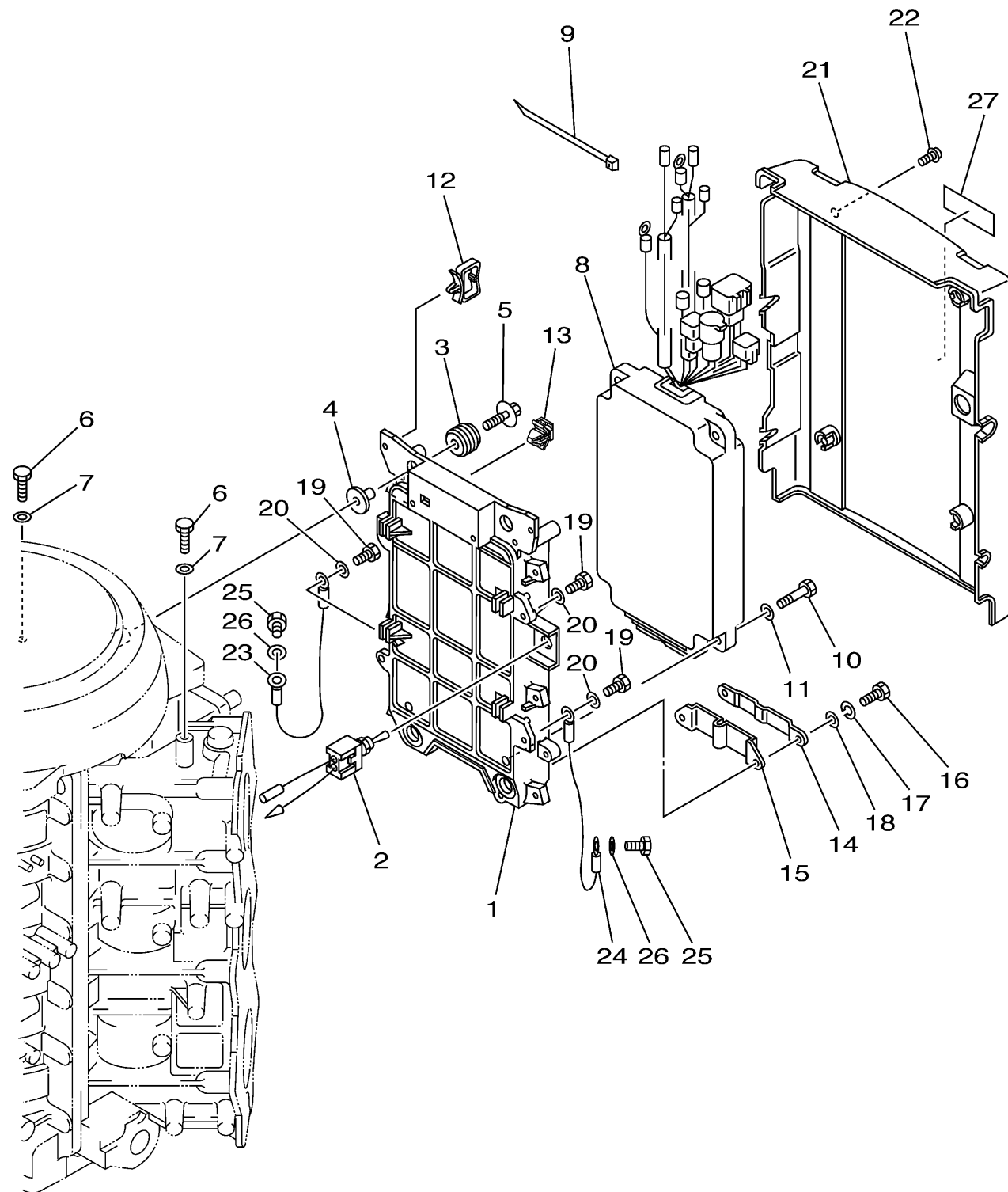
ELECTRICAL 1

Ref No.	Part Number	Description	Qty	Remarks
1	67H-85542-00-94	BRACKET	1	(67N1)
2	6R3-8259E-00-00	SWITCH ASSY	1	(67N1)
3	90480-09M12-00	GROMMET	4	(67N1)
4	90387-06M03-00	COLLAR	4	(67N1)
5	90119-06M28-00	BOLT, WITH WASHER	4	(67N1)
6	97095-06016-00	BOLT	2	(67N1)
7	92995-06600-00	WASHER	2	(67N1)
8	67M-85540-01-00	C.D.I. UNIT ASSY	1	(67N1)
9	90465-13M18-00	CLAMP	1	(67N1)
10	97013-06025-00	BOLT	4	(67N1)
11	92903-06600-00	WASHER, PLATE	4	(67N1)
12	90464-23199-00	CLAMP	2	(67N1)
13	90464-09M47-00	CLAMP	1	(67N1)
14	61A-85525-00-00	COVER	1	(67N1)
15	61A-85548-00-00	HOLDER	1	(67N1)
16	97095-06016-00	BOLT	2	(67N1)
17	92995-06100-00	WASHER, SPRING	2	(67N1)
18	92995-06600-00	WASHER	2	(67N1)
19	97095-06012-00	BOLT	4	(67N1)
20	92995-06600-00	WASHER	4	(67N1)

CONTINUED ON NEXT FRAME >



67H1100-2130
dx150ltra



ELECTRICAL 1

Ref No.	Part Number	Description	Qty	Remarks
21	67H-85537-00-00	COVER	1	(67N1)
22	90159-06M03-00	SCREW, WITH WASHER	4	(67N1)
23	61A-82519-00-00	WIRE, EARTH LEAD	1	(67N1)
24	6R3-82519-00-00	WIRE, EARTH LEAD	1	(67N1)
25	97095-06012-00	BOLT	2	(67N1)
26	92995-06600-00	WASHER	2	(67N1)
27	6E5-85711-40-00	MARK, CAUTION	1	(67N1)



67H1100-2130
dx150tira