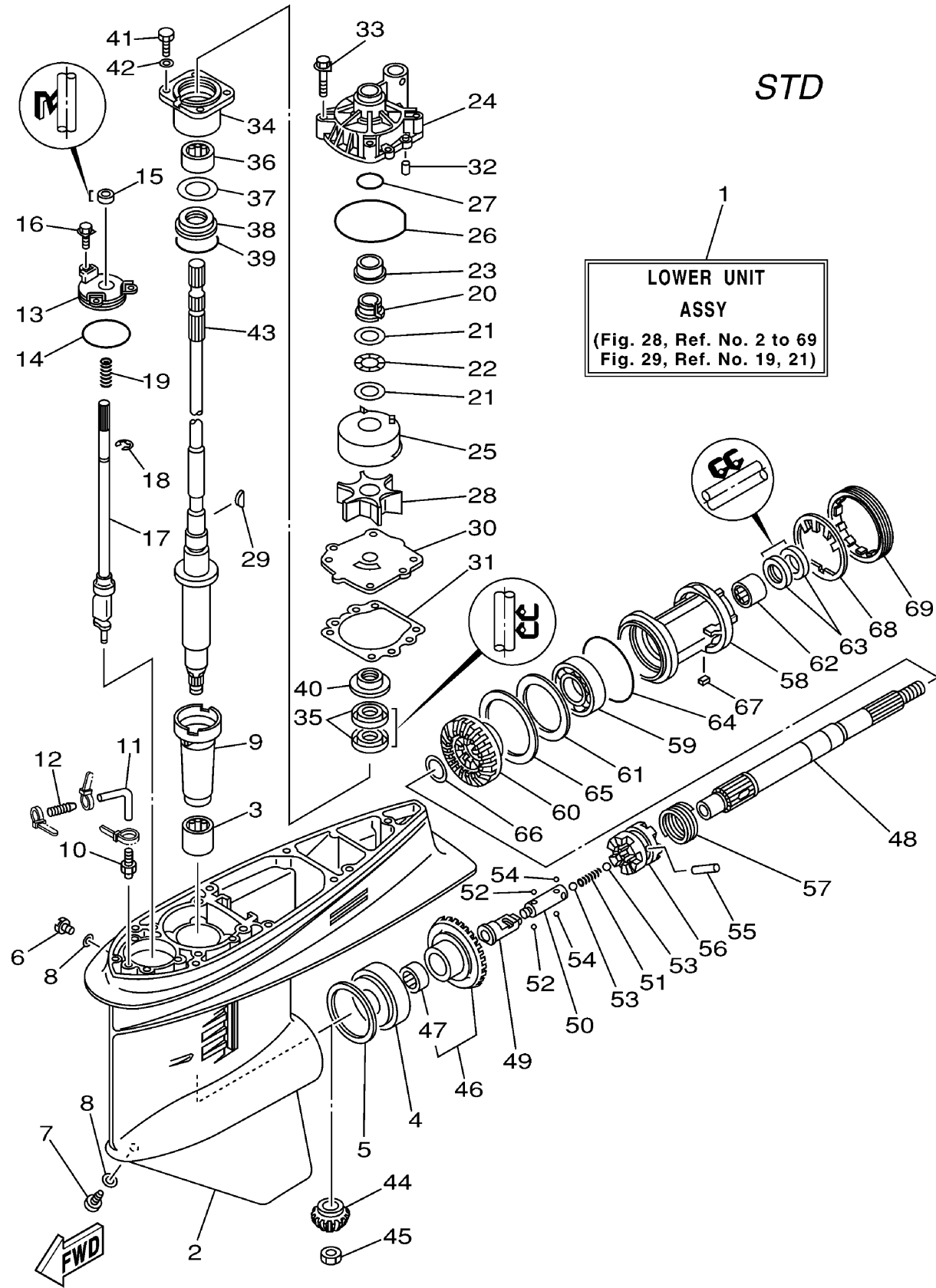


68V1100-2280
f115tlra_if115txra

LOWER CASING DRIVE 1 (F115)

Ref No.	Part Number	Description	Qty	Remarks
1	68V-45300-31-8D	LOWER UNIT ASSY	1	UR X(68V1)
1	68V-45300-11-8D	LOWER UNIT ASSY	1	UR L(68V1)
2	6E5-45301-04-8D	CASING, LOWER	1	(68V1)
3	93315-628U9-00	BEARING	1	(68V1)
4	93332-000U7-00	BEARING	1	(68V1)
5	6E5-45567-01-30	SHIM (T:0.30MM)	1	UR(68V1)
5	6E5-45567-01-12	SHIM (T:0.12MM)	1	UR(68V1)
5	6E5-45567-01-50	SHIM (T:0.50MM)	1	UR(68V1)
5	6E5-45567-01-40	SHIM (T:0.40MM)	1	UR(68V1)
5	6E5-45567-01-18	SHIM (T:0.18MM)	1	UR(68V1)
5	6E5-45567-01-10	SHIM (T:0.10MM)	1	UR(68V1)
5	6E5-45567-01-15	SHIM (T:0.15MM)	1	UR(68V1)
6	90340-08M04-00	PLUG, STRAIGHT SCREW	1	(68V1)
7	688-45341-00-00	PLUG, DRAIN	1	(68V1)
8	90430-08020-00	.GASKET	2	(68V1)
9	6E5-45536-00-00	SLEEVE, DRIVE SHAFT	1	(68V1)
10	6E5-45378-00-00	NIPPLE, HOSE	1	(68V1)
11	90445-07ME9-00	HOSE (L120)	1	UR X(68V1)
11	90445-07ME8-00	HOSE (L80)	1	UR L(68V1)
12	6E5-83558-10-00	END, NIPPLE	1	(68V1)

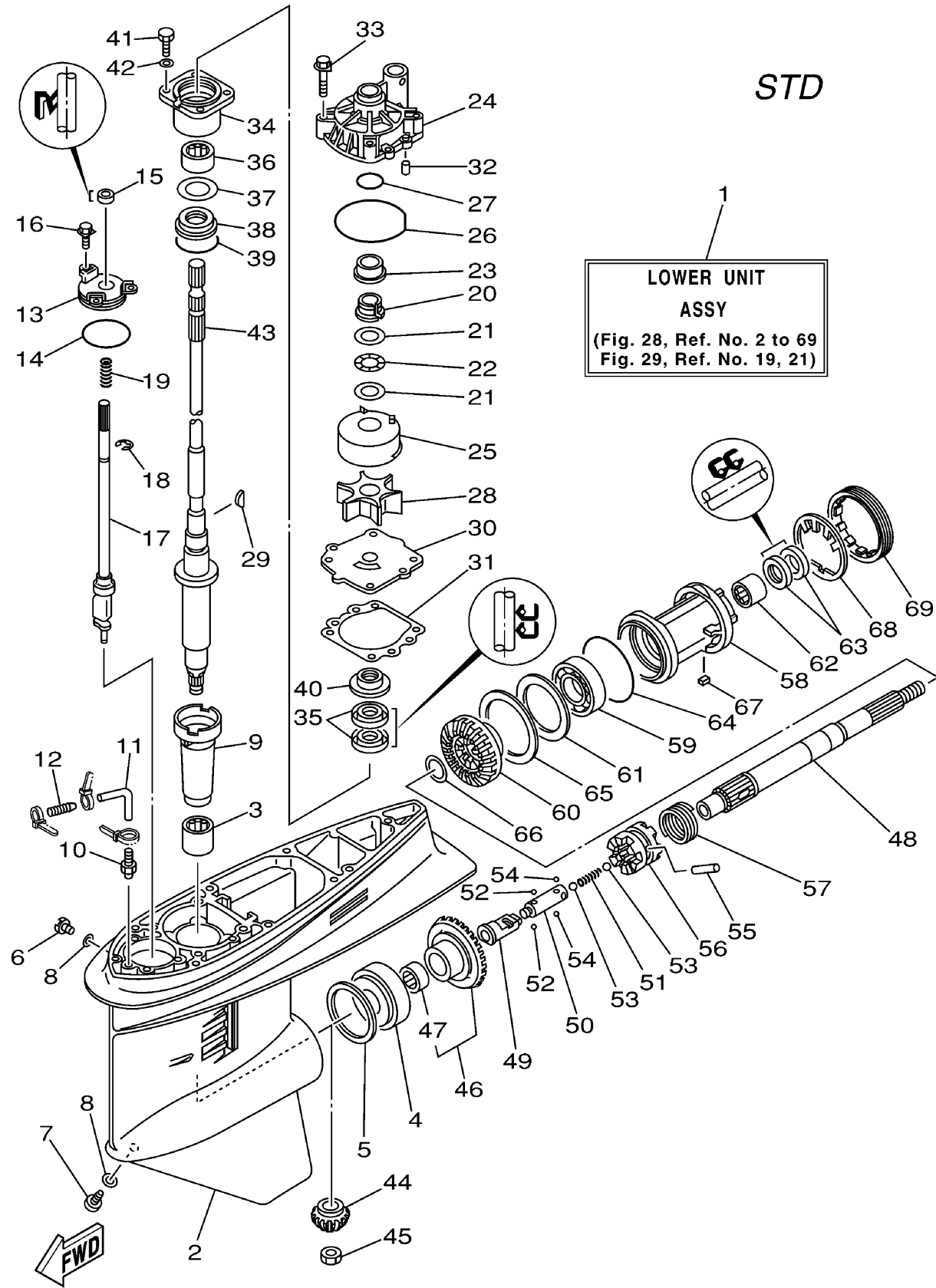
CONTINUED ON NEXT FRAME >



LOWER CASING DRIVE 1 (F115)

Ref No.	Part Number	Description	Qty	Remarks
13	6E5-45321-00-00	PLATE	1	(68V1)
14	93210-58144-00	.O-RING	1	(68V1)
15	93106-09014-00	.OIL SEAL	1	(68V1)
16	90119-06M10-00	BOLT, WITH WASHER	3	(68V1)
17	6L6-44150-01-00	SHIFT CAM ASSY	1	(68V1)
18	93430-08006-00	CIRCLIP	1	(68V1)
19	90501-11M10-00	SPRING, COMPRESSION	1	(68V1)
20	61A-45538-00-00	SPACER 1	1	(68V1)
21	90201-22M01-00	WASHER, PLATE	2	(68V1)
22	90206-22M19-00	WASHER, WAVE	1	(68V1)
23	61A-45527-00-00	COLLAR, DRIVE SHAFT	1	(68V1)
24	61A-44311-01-00	HOUSING, WATER PUMP	1	(68V1)
25	61A-44322-02-00	.INSERT, CARTRIDGE	1	(68V1)
26	93210-86M38-00	.O-RING	1	(68V1)
27	93210-37160-00	.O-RING	1	(68V1)
28	6E5-44352-01-00	.IMPELLER	1	(68V1)
29	90280-04M05-00	.KEY, WOODRUFF	1	(68V1)
30	68V-44323-00-00	.OUTER PLATE, CARTRIDGE	1	(68V1)
31	6E5-44315-A0-00	.GASKET, WATER PUMP	1	(68V1)
32	93606-12019-00	.PIN, DOWEL	2	(68V1)

CONTINUED ON NEXT FRAME >

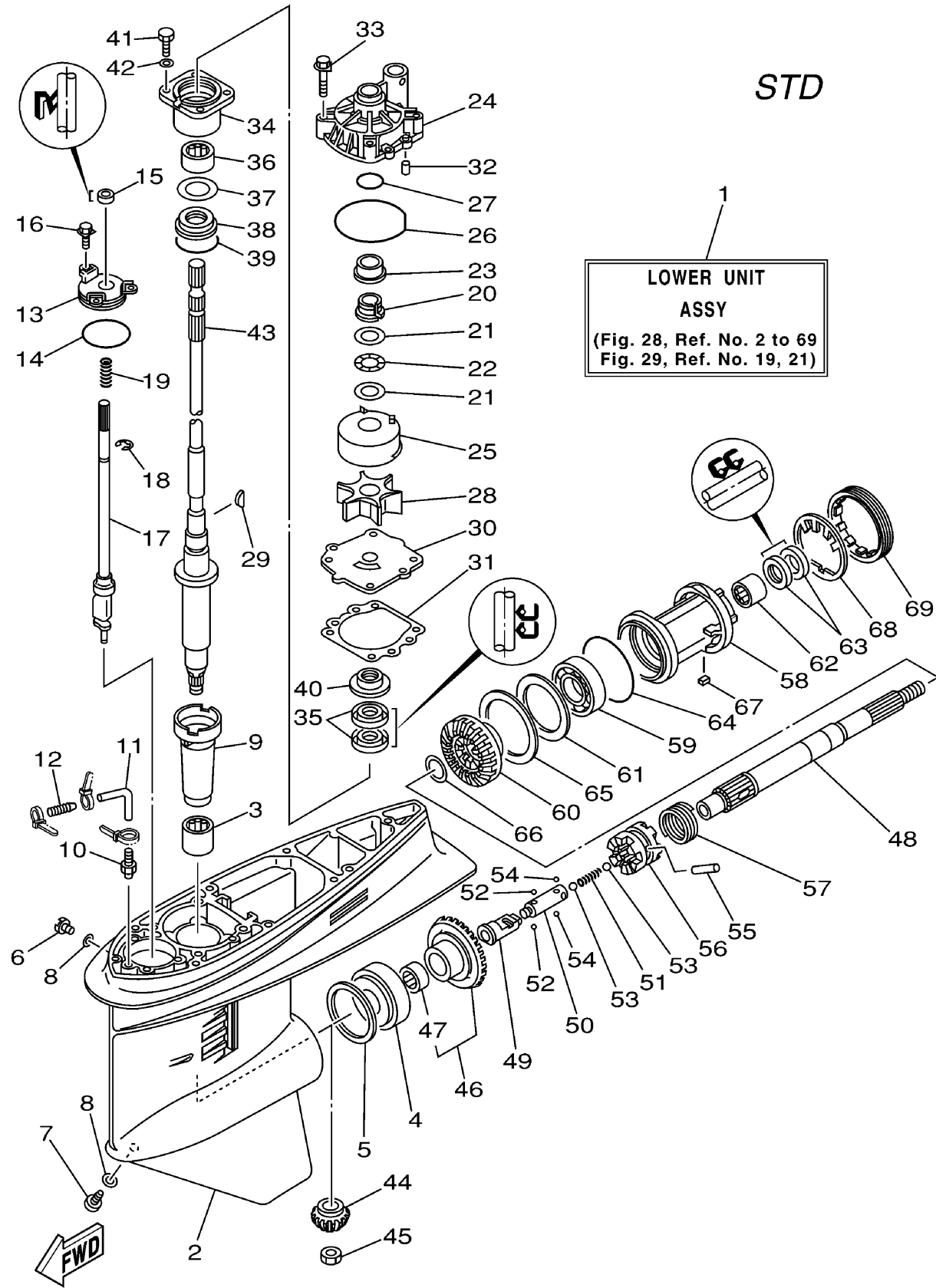


68V1100-2280
f115tlra_if115txra

LOWER CASING DRIVE 1 (F115)

Ref No.	Part Number	Description	Qty	Remarks
33	90119-08M14-00	.BOLT, WITH WASHER	4	(68V1)
34	6E5-45331-00-94	HOUSING, BEARING	1	(68V1)
35	93101-28M16-00	.OIL SEAL	2	(68V1)
36	93317-330U2-00	BEARING	1	(68V1)
37	6E5-45587-01-12	SHIM (T:0.12MM)	1	UR(68V1)
37	6E5-45587-01-30	SHIM (T:0.30MM)	1	UR(68V1)
37	6E5-45587-01-50	SHIM (T:0.50MM)	1	UR(68V1)
37	6E5-45587-01-10	SHIM (T:0.10MM)	1	UR(68V1)
37	6E5-45587-01-15	SHIM (T:0.15MM)	1	UR(68V1)
37	6E5-45587-01-18	SHIM (T:0.18MM)	1	UR(68V1)
37	6E5-45587-01-40	SHIM (T:0.40MM)	1	UR(68V1)
38	93341-930V2-00	BEARING	1	(68V1)
39	93210-55M14-00	.O-RING	1	(68V1)
40	6E5-45344-00-00	COVER, OIL SEAL	1	(68V1)
41	97095-08025-00	BOLT	4	(68V1)
42	92995-08600-00	WASHER	4	(68V1)
43	68V-45501-10-00	DRIVE SHAFT COMP.	1	UR L(68V1)
43	68V-45501-30-00	DRIVE SHAFT COMP.	1	UR X(68V1)
44	68V-45551-00-00	PINION (13T)	1	(68V1)
45	90170-16M01-00	NUT	1	(68V1)

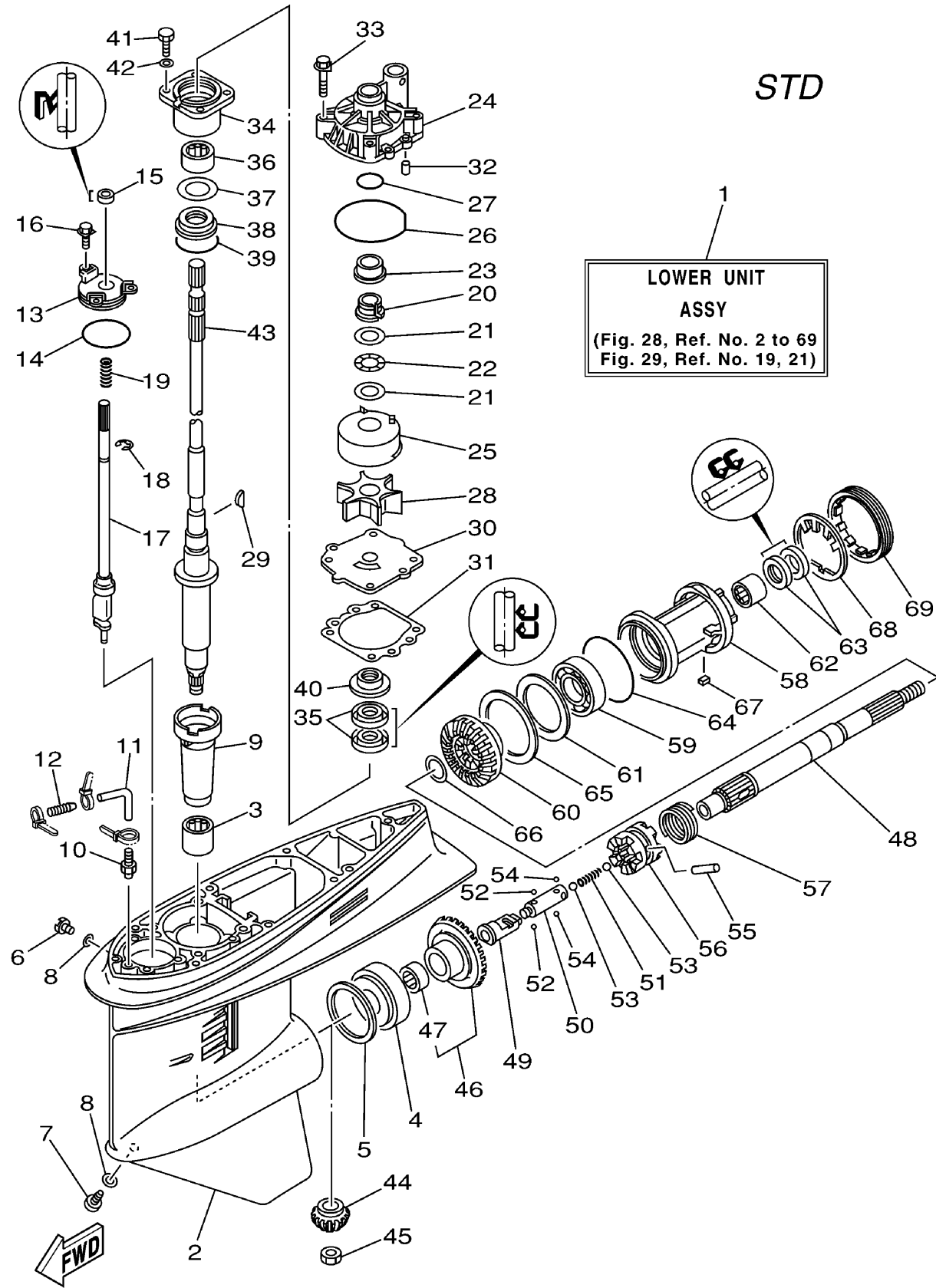
CONTINUED ON NEXT FRAME >



LOWER CASING DRIVE 1 (F115)

Ref No.	Part Number	Description	Qty	Remarks
46	68V-45560-00-00	GEAR 1 (28T)	1	(68V1)
47	93315-425U7-00	. .BEARING	1	(68V1)
48	6E5-45611-01-00	SHAFT, PROPELLER	1	(68V1)
49	6K1-45641-01-00	SHIFTER	1	(68V1)
50	6E5-45634-01-00	SLIDE, SHIFT	1	(68V1)
51	90501-16M37-00	SPRING, COMPRESSION	1	(68V1)
52	93507-32009-00	.BALL	2	(68V1)
53	93511-32017-00	BALL	2	(68V1)
54	93503-16003-00	BALL	2	(68V1)
55	90250-08M07-00	PIN, STRAIGHT	1	(68V1)
56	68V-45631-01-00	CLUTCH, DOG	1	(68V1)
57	6E5-45633-01-00	RING, CROSS PIN	1	(68V1)
58	6E5-45332-00-94	HOUSING, BEARING	1	(68V1)
59	93306-208U0-00	BEARING	1	(68V1)
60	68V-45571-00-00	GEAR 2 (28T)	1	(68V1)
61	6E5-45576-00-00	WASHER, THRUST 2	1	(68V1)
62	93315-430U8-00	BEARING	1	(68V1)
63	93101-30M17-00	.OIL SEAL	2	(68V1)
64	93210-86M39-00	.O-RING	1	(68V1)
65	6L6-45577-00-12	SHIM (T:0.12MM)	1	UR(68V1)

CONTINUED ON NEXT FRAME >



LOWER CASING DRIVE 1 (F115)

Ref No.	Part Number	Description	Qty	Remarks
65	6L6-45577-00-30	SHIM (T:0.30MM)	1	UR(68V1)
65	6L6-45577-00-50	SHIM (T:0.50MM)	1	UR(68V1)
65	6L6-45577-00-10	SHIM (T:0.10MM)	1	UR(68V1)
65	6L6-45577-00-15	SHIM (T:0.15MM)	1	UR(68V1)
65	6L6-45577-00-18	SHIM (T:0.18MM)	1	UR(68V1)
65	6L6-45577-00-40	SHIM (T:0.40MM)	1	UR(68V1)
66	90201-30M92-00	WASHER, PLATE	2	(68V1)
67	90282-04010-00	KEY, STRAIGHT	1	(68V1)
68	688-45383-02-00	WASHER, CLAW	1	(68V1)
69	688-45384-00-00	NUT	1	(68V1)