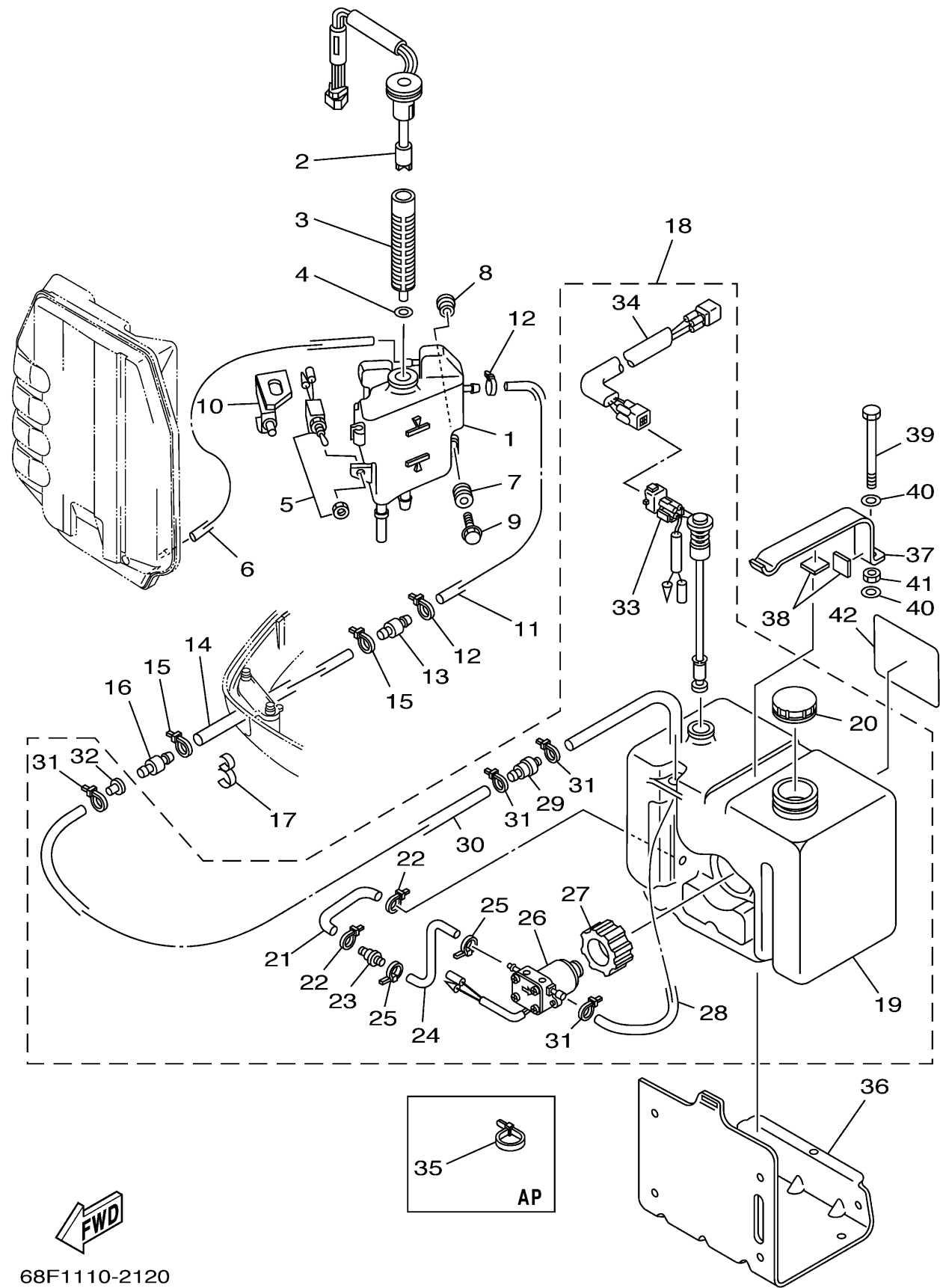


# OIL TANK

Ref No.	Part Number	Description	Qty	Remarks
1	68F-21750-00-00	OIL TANK ASSY	1	(VZ)
2	67H-85730-01-00	OIL LEVEL GAUGE ASSY	1	(VZ)
3	6E5-13411-00-00	STRAINER, OIL	1	(VZ)
4	6E5-13414-00-00	GASKET, STRAINER COVER	1	(VZ)
5	6R3-8259E-00-00	SWITCH ASSY	1	(VZ)
6	90445-07M43-00	HOSE (L600)	1	(VZ)
7	6A0-82317-00-00	DAMPER, IGNITION COIL	3	(VZ)
8	624-42542-00-00	PIPE	2	(VZ)
9	90119-06M65-00	BOLT, WITH WASHER	3	(VZ)
10	90465-12M92-00	CLAMP	1	(VZ)
11	6E5-24323-00-00	PIPE 12	1	(VZ)
12	90465-11M10-00	.CLAMP	2	(VZ)
13	6E5-24379-00-00	PIPE, JOINT 4	1	(VZ)
14	90445-12207-00	HOSE (L2400)	1	(VZ)
15	90465-11M10-00	.CLAMP	2	(VZ)
16	6E5-24379-00-00	PIPE, JOINT 4	1	(VZ)
17	90464-13M34-00	CLAMP	1	(VZ)
18	6E5-21708-08-00	OIL TANK SUB-ASSY	1	AP(VZ)
19	6E5-21733-02-00	. .SUB TANK, OIL (10.5L)	1	(VZ)
20	6E5-21770-03-00	. .OIL TANK CAP ASSY	1	(VZ)

CONTINUED ON NEXT FRAME >

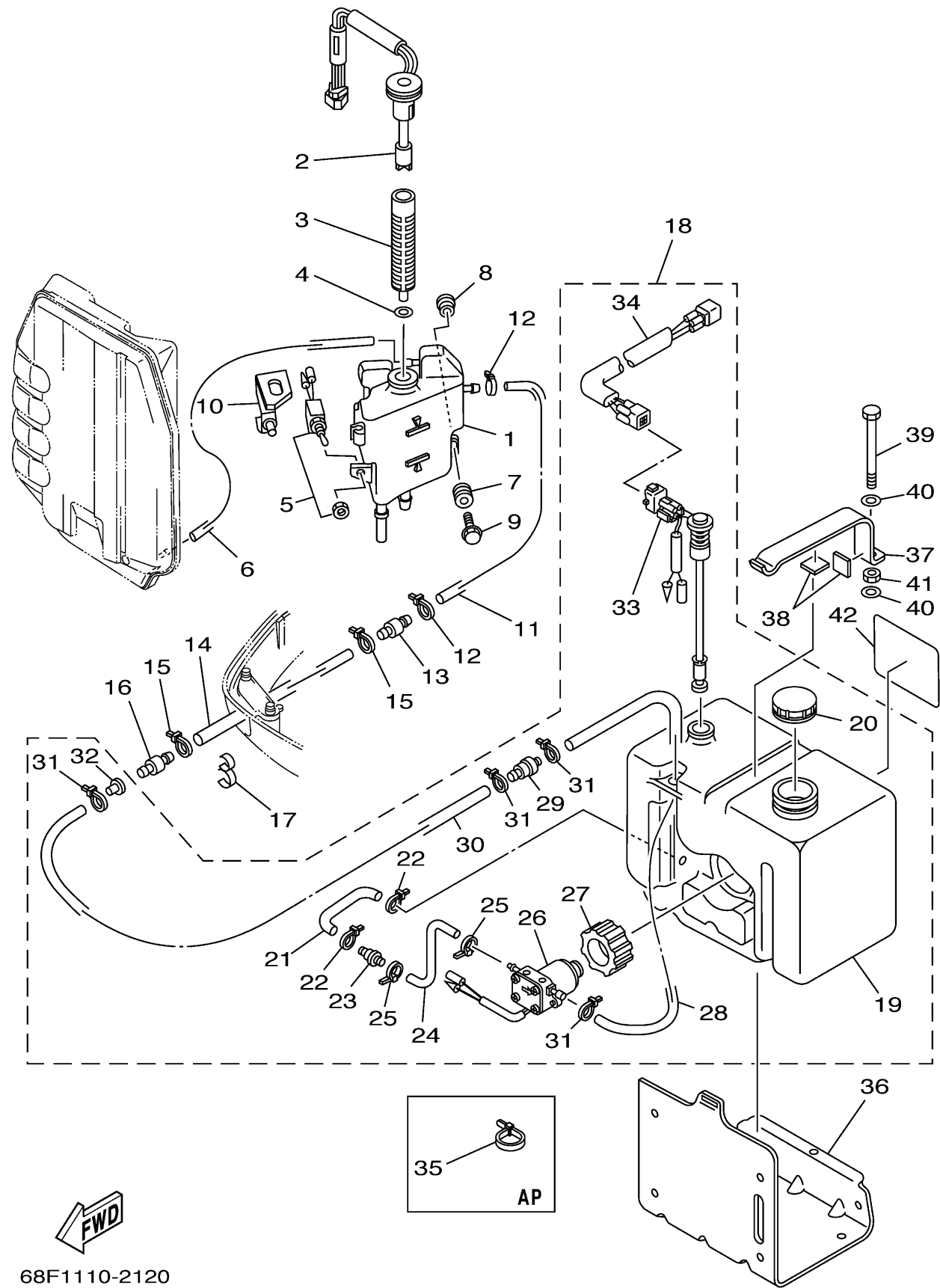


# OIL TANK

Ref No.	Part Number	Description	Qty	Remarks
21	6E5-24322-00-00	..PIPE 11	1	(VZ)
22	90465-11M10-00	..CLAMP	2	(VZ)
23	646-24251-02-00	..STRAINER 1	1	(VZ)
24	6E5-24319-01-00	..PIPE, OIL	1	(VZ)
25	90465-11M10-00	..CLAMP	2	(VZ)
26	6E5-81900-01-00	..OIL FEED PUMP ASSY	1	(VZ)
27	6E5-81922-00-00	..GROMMET	1	(VZ)
28	6E5-24321-01-00	..PIPE 10	1	(VZ)
29	6E5-24379-00-00	..PIPE, JOINT 4	1	(VZ)
30	90445-11M81-00	..HOSE (L3000)	1	FOR 6E5-21708-08(VZ)
31	90465-11M10-00	..CLAMP	4	(VZ)
32	90480-06M19-00	..GROMMET	1	(VZ)
33	6E5-85720-04-00	..OIL LEVEL GAUGE ASSY	1	(VZ)
34	6R3-85721-30-00	..WIRE, LEAD (L=3.0M)	1	FOR 6E5-21708-08(VZ)
35	90465-13M11-00	CLAMP	1	AP(VZ)
36	6E5-21734-01-33	HOLDER, OIL SUB TANK	1	AP(VZ)
37	6E5-21798-01-33	BRACKET, DAMPER	1	AP(VZ)
38	6E5-21746-00-00	DAMPER	2	AP(VZ)
39	97080-06100-00	BOLT	1	AP(VZ)
40	92990-06600-00	..WASHER, PLATE	2	AP(VZ)

CONTINUED ON NEXT FRAME >

68F1110-2120  
vz150\_175\_200t1ra



# OIL TANK

Ref No.	Part Number	Description	Qty	Remarks
41	95380-06600-00	NUT, HEXAGON	1	AP(VZ)
42	6E5-13437-43-00	MARK, CAUTION	1	(VZ)

68F1110-2120  
vz150\_175\_200tira