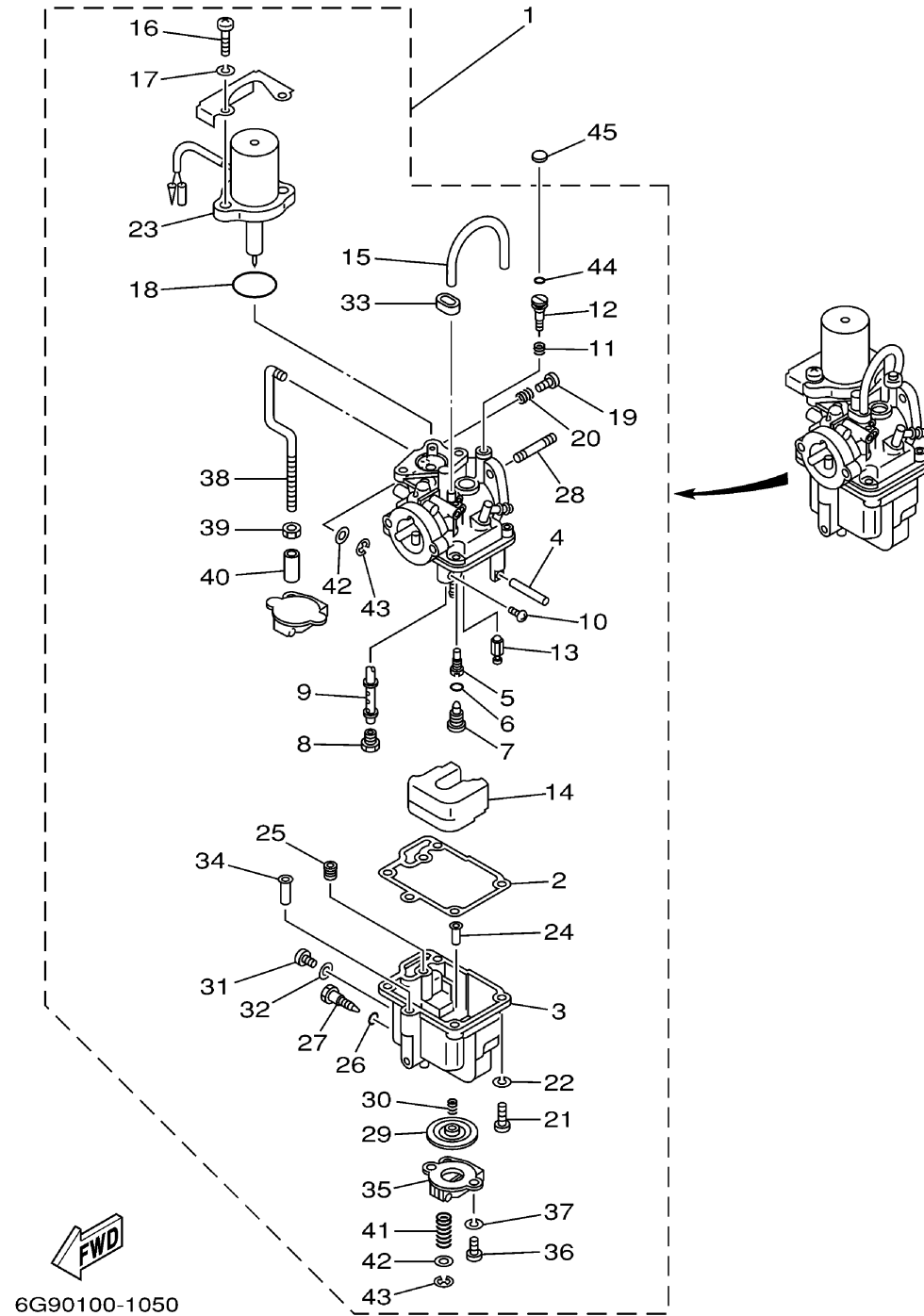


CARBURETOR

Ref No.	Part Number	Description	Qty	Remarks
1	6G9-14301-22-00	CARBURETOR ASSY 1	1	
2	6G8-14384-01-00	. GASKET, FLOAT CHAMBER	1	
3	6G8-14381-02-00	. BODY, FLOAT CHAMBER	1	
4	647-14386-00-00	. .PIN, FLOAT	1	
5	6G8-14342-24-00	. JET, PILOT (#48)	1	
6	654-14198-00-00	. GASKET	1	
7	6G8-14345-00-00	. PLUG, MAIN NOZZLE	1	
8	648-14343-43-00	. JET, MAIN (#86)	1	
9	6G8-14341-20-00	. NOZZLE, MAIN	1	
10	6G8-14216-00-00	. SCREW	1	
11	647-14334-00-00	. SPRING	1	
12	6G8-14323-20-00	. .SCREW, AIR ADJUSTING	1	
13	6G8-14392-00-00	. VALVE, NEEDLE	1	
14	6G8-14385-00-00	. FLOAT	1	
15	6G8-14197-01-00	. PIPE	1	
16	97880-06018-00	. SCREW, PAN HEAD	2	
17	92990-06100-00	. WASHER, SPRING	2	
18	1HV-14147-00-00	. O-RING	1	
19	664-14321-01-00	. .SCREW, THROTTLE	1	
20	646-14212-00-00	. SPRING, PILOT ADJUSTING	1	

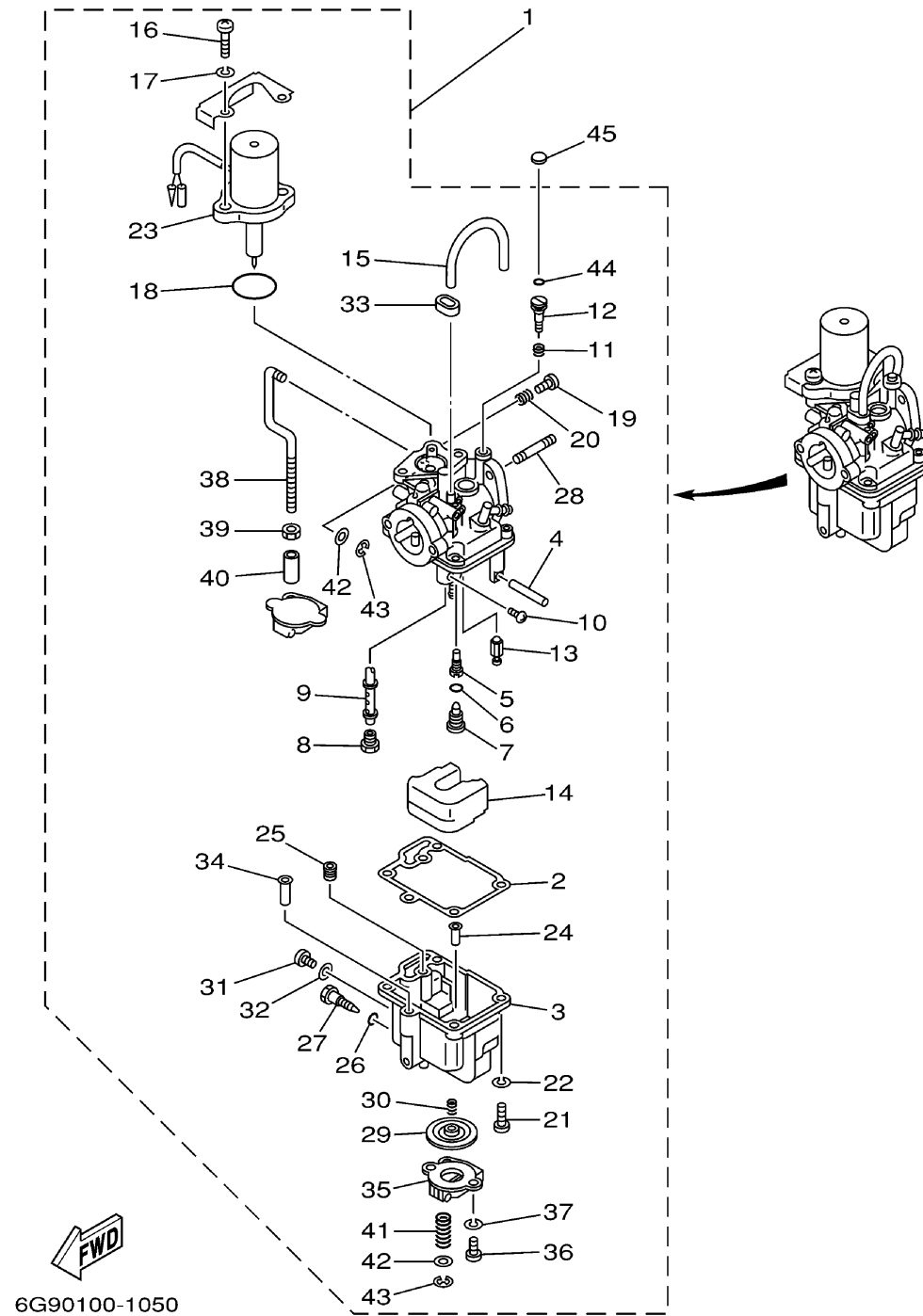
CONTINUED ON NEXT FRAME >



CARBURETOR

Ref No.	Part Number	Description	Qty	Remarks
21	98580-04016-00	. SCREW, PAN HEAD	4	
22	92990-04100-00	. .WASHER, SPRING	4	
23	6G8-1410A-01-00	. STARTER SET	1	
24	6G8-14827-00-00	. FILTER	1	
25	6A4-14344-30-00	. JET, STARTER (#60)	1	
26	5Y1-14397-00-00	. O-RING	1	
27	6G8-14383-00-00	. SCREW, DRAIN	1	
28	90116-06M26-00	. BOLT, STUD	2	
29	6G8-14368-02-00	. DIAPHRAGM ASSEMBLY	1	
30	6G8-14275-01-00	. .SPRING	1	
31	97890-05006-00	. SCREW, PAN HEAD	1	
32	646-14198-01-00	. GASKET	1	
33	6G8-14349-00-00	. PIPE	1	
34	6G8-14217-00-00	. VALVE, CHOKE	1	
35	6G8-14293-03-00	. COVER 1	1	
36	98580-04010-00	. .SCREW, PAN HEAD	2	
37	92990-04100-00	. .WASHER, SPRING	2	
38	6G8-14379-00-00	. ROD, STARTER	1	
39	98813-03100-00	. NUT	1	
40	6G8-14229-00-00	. SHAFT, CHOKE	1	

CONTINUED ON NEXT FRAME >



CARBURETOR

Ref No.	Part Number	Description	Qty	Remarks
41	6G8-14286-01-00	. SPRING	1	
42	6G8-14357-00-00	. WASHER, PLAIN	2	
43	389-14137-00-00	. CLIP	2	
44	5H0-14397-00-00	. O-RING	1	
45	6G8-1432A-10-00	PLUG	1	

