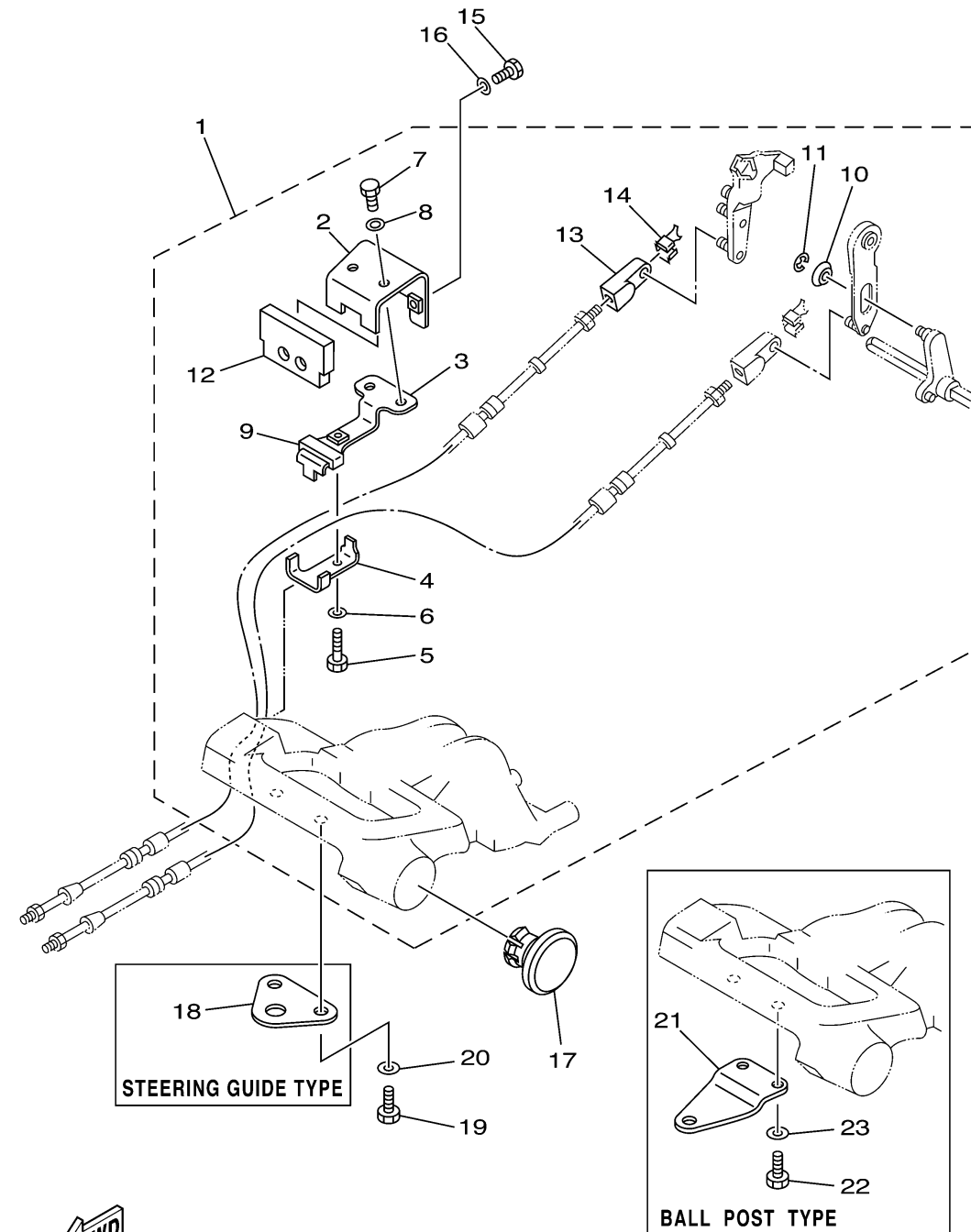


REMO CON ATTACHMENT



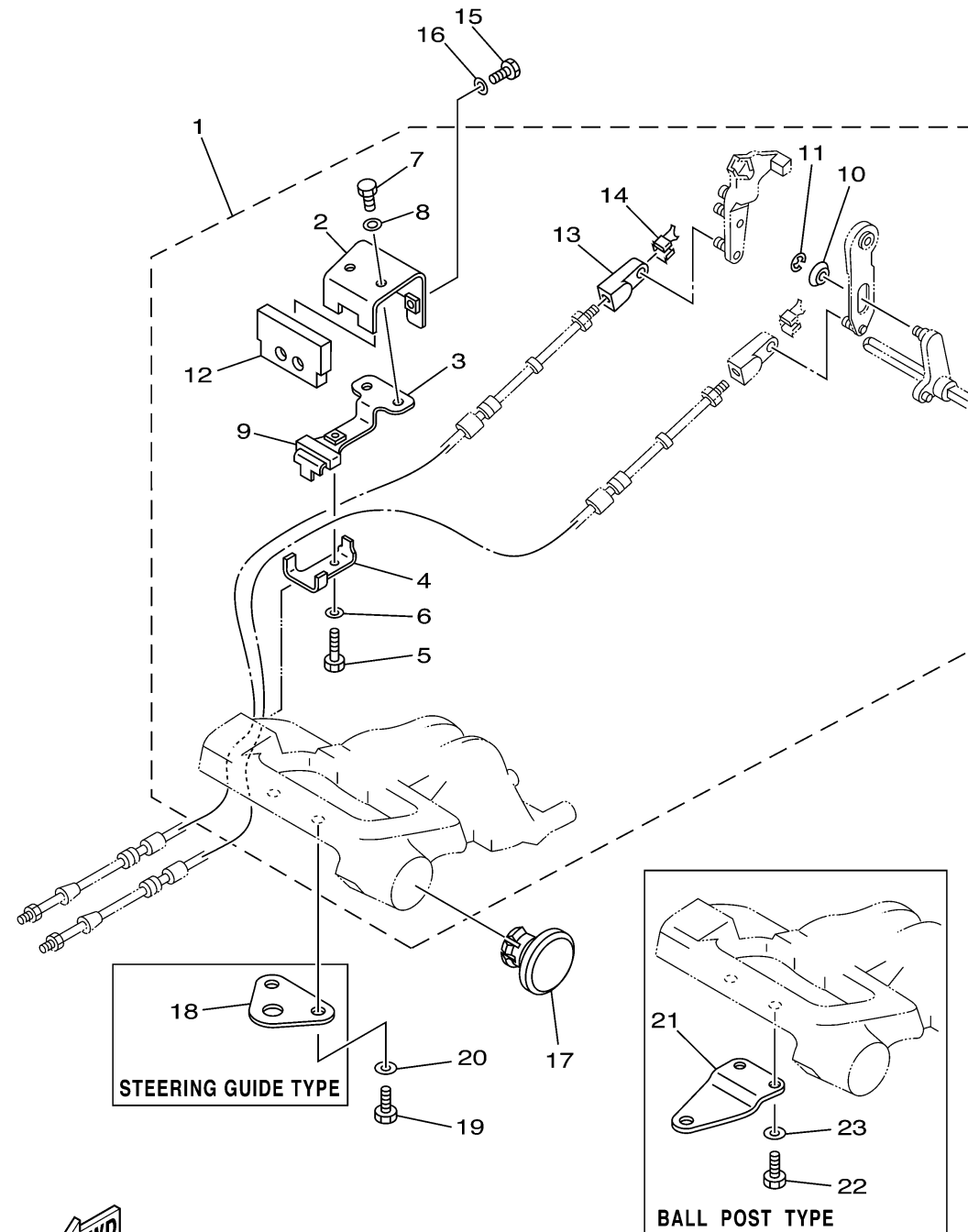
Ref No.	Part Number	Description	Qty	Remarks
1	6G8-48501-03-00	REMOTE CONT. ATTACHMENT ASSY	1	AP
2	6G8-48531-51-00	. BRACKET, REMOTE CONTROL 1	1	
3	6G8-48532-50-00	. BRACKET, REMOTE CONTROL 2	1	
4	6G8-48538-50-00	. CLAMP, CABLE 1	1	
5	97095-06030-00	. BOLT	1	
6	92995-06600-00	. WASHER	1	
7	97095-06012-00	. BOLT	2	
8	92995-06600-00	. WASHER	2	
9	6G8-48565-50-00	. GROMMET	1	
10	90387-06M73-00	. COLLAR	1	
11	93430-04M03-00	. CIRCLIP	1	
12	6G8-48351-51-00	. SEAL RUBBER	1	
13	6G8-26363-00-00	. .END, WIRE 1	1	
14	6G8-26364-00-00	. .END, CABLE	1	
15	97095-06016-00	BOLT	2	ER
16	92995-06600-00	WASHER	2	ER
17	6G8-42551-00-00	GROMMET	1	ER
18	6G8-48511-20-00	HOOK, STEERING	1	ER STEERING GUIDE
19	97095-06016-00	BOLT	2	ER
20	92995-06600-00	WASHER	2	ER

CONTINUED ON NEXT FRAME >


6G83100-C170

REMO CON ATTACHMENT

Ref No.	Part Number	Description	Qty	Remarks
21	6G8-48511-10-00	HOOK, STEERING	1	AP ER BALL POST TYPE
22	97095-06016-00	BOLT	2	AP ER
23	92995-06600-00	WASHER	2	AP ER



6G83100-C170