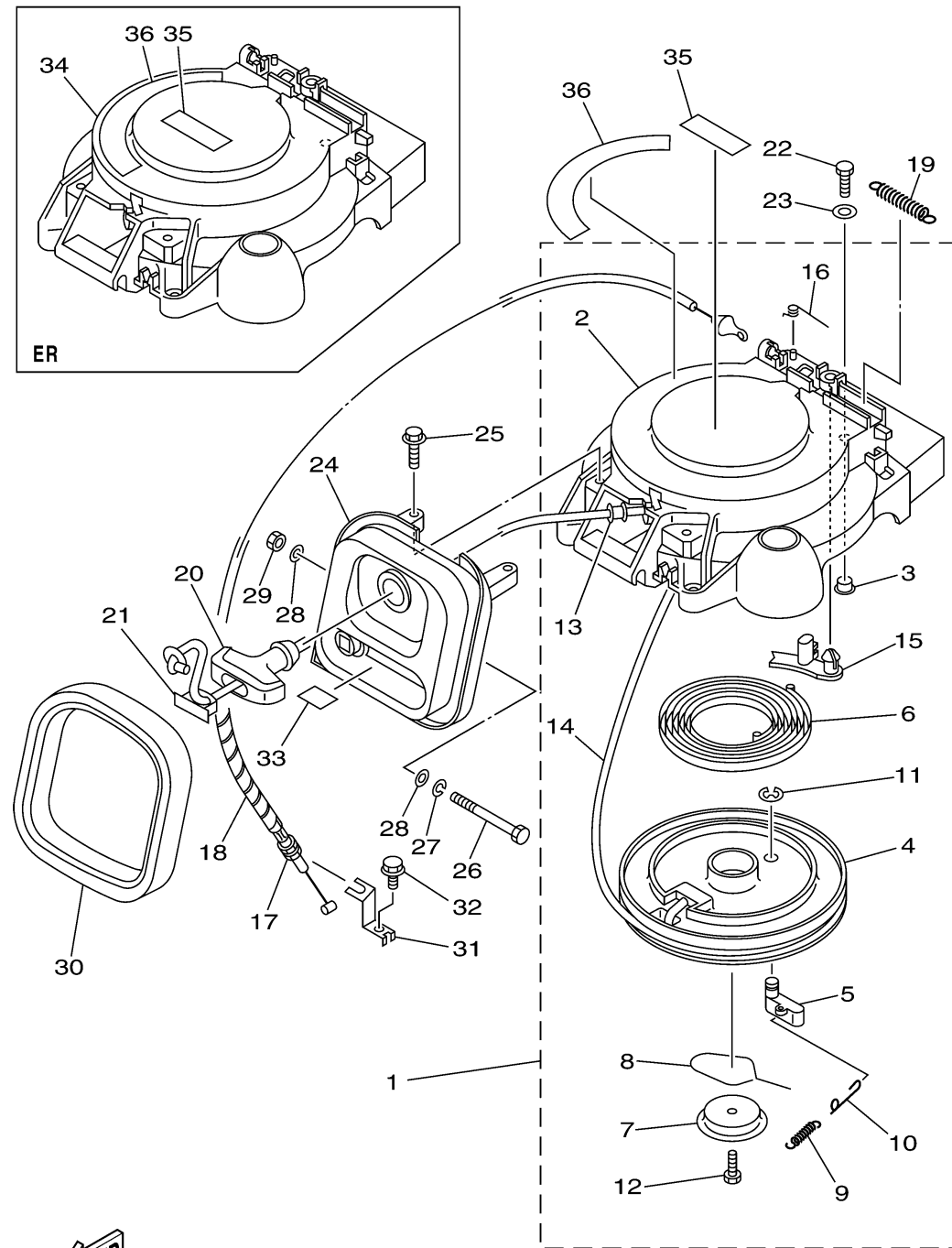


STARTER

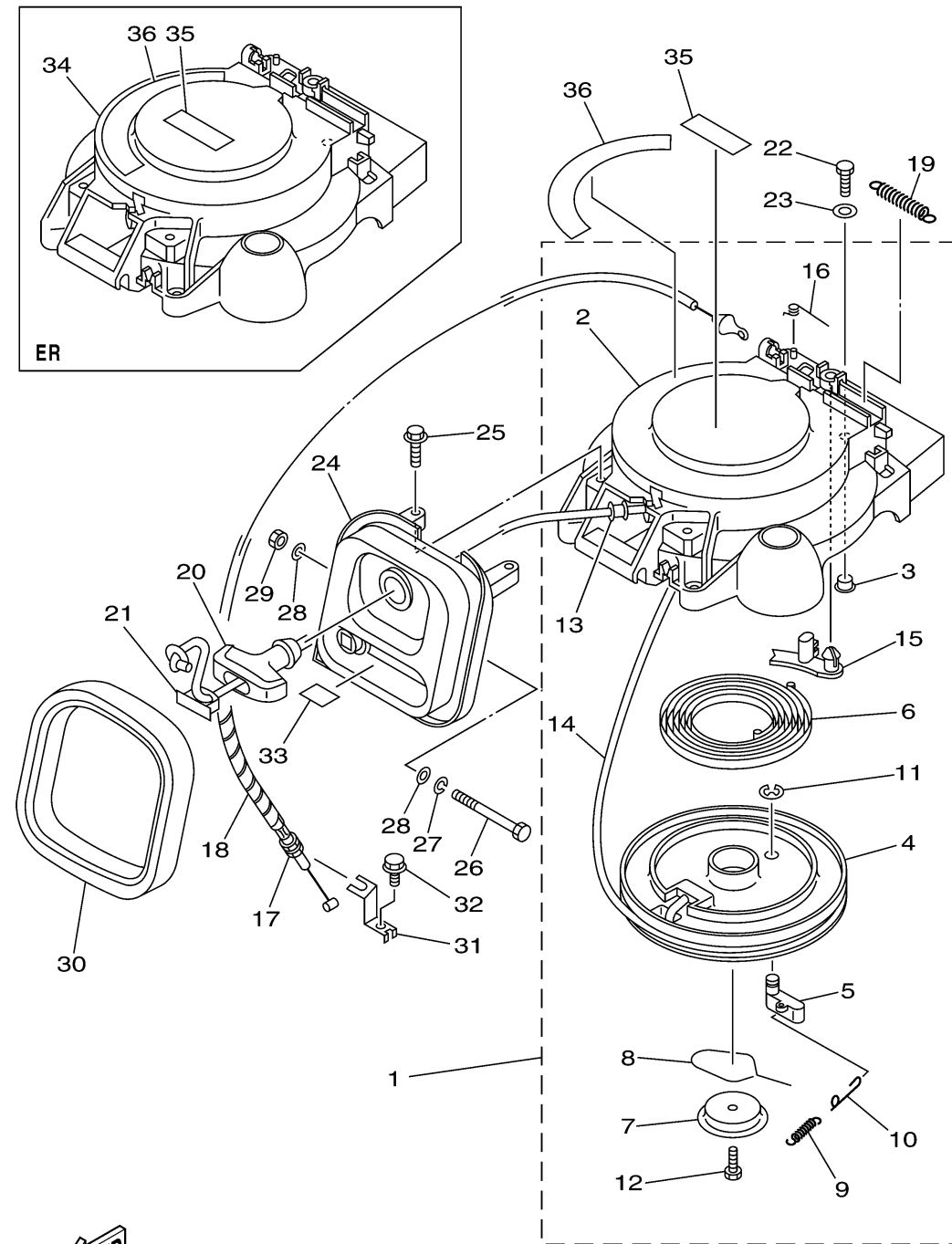


| Ref No. | Part Number | Description | Qty | Remarks |
|---------|-----------------|---------------------------|-----|---|
| 1 | 66M-15710-02-00 | STARTER ASSY | 1 | |
| 2 | 66M-15711-01-00 | ..CASE, STARTER | 1 | |
| 3 | 90387-06M05-00 | ..COLLAR | 3 | |
| 4 | 63V-15714-00-00 | ..DRUM, SHEAVE | 1 | |
| 5 | 63V-15741-00-00 | ..PAWL, DRIVE | 1 | |
| 6 | 63V-15713-00-00 | ..SPRING, STARTER | 1 | |
| 7 | 63V-15716-00-00 | ..PLATE, DRIVE | 1 | |
| 8 | 63V-15705-01-00 | ..SPRING, DRIVE PAWL | 1 | |
| 9 | 63V-15767-01-00 | ..SPRING | 1 | |
| 10 | 63V-15784-01-00 | ..SPRING, RETURN | 1 | |
| 11 | 63V-15744-00-00 | ..CIRCLIP | 1 | |
| 12 | 63V-15768-00-00 | ..BOLT | 1 | |
| 13 | 63V-15764-00-00 | ..COLLAR 1 | 1 | |
| 14 | 90890-44373-00 | ..ROPE, STARTER | 1 | UNAVAILABLE - OBTAIN LOCALLY, CUT TO 1.8M |
| 15 | 66T-15794-00-00 | ..STOPPER | 1 | |
| 16 | 66T-15734-00-00 | ..SPRING, RETURN | 1 | |
| 17 | 66M-15770-00-00 | CABLE COMP., STARTER STOP | 1 | |
| 18 | 90446-06M90-00 | HOSE (L120) | 1 | |
| 19 | 66T-15731-00-00 | ..SPRING, RETURN | 1 | |
| 20 | 6G1-15755-00-00 | HANDLE, STARTER | 1 | |

CONTINUED ON NEXT FRAME >


66N4110-D110

STARTER



| Ref No. | Part Number | Description | Qty | Remarks |
|---------|-----------------|--------------------|-----|---------|
| 21 | 6G1-15779-00-00 | COVER | 1 | |
| 22 | 97095-06020-00 | BOLT | 3 | |
| 23 | 92995-06600-00 | WASHER | 3 | |
| 24 | 66M-15758-00-00 | GUIDE, ROPE | 1 | |
| 24 | 66M-15758-10-00 | GUIDE, ROPE | 1 | |
| 25 | 90119-06M59-00 | BOLT, WITH WASHER | 2 | |
| 26 | 97095-06090-00 | BOLT | 1 | |
| 27 | 92995-06100-00 | WASHER, SPRING | 1 | |
| 28 | 90201-06M05-00 | WASHER, PLATE | 2 | |
| 29 | 95380-06700-00 | NUT | 1 | |
| 30 | 66M-15762-00-00 | SEAL, RUBBER 2 | 1 | |
| 31 | 66M-15774-00-00 | STAY 4 | 1 | |
| 32 | 90109-06M86-00 | BOLT | 1 | |
| 33 | 66M-84342-00-00 | SEAT, EMBLEM | 1 | |
| 34 | 66M-15711-10-00 | CASE, STARTER | 1 | |
| 35 | 6A1-83625-41-00 | MARK 5 | 1 | |
| 36 | 66M-14427-40-00 | LABEL, INSTRUCTION | 1 | |


66N4110-D110