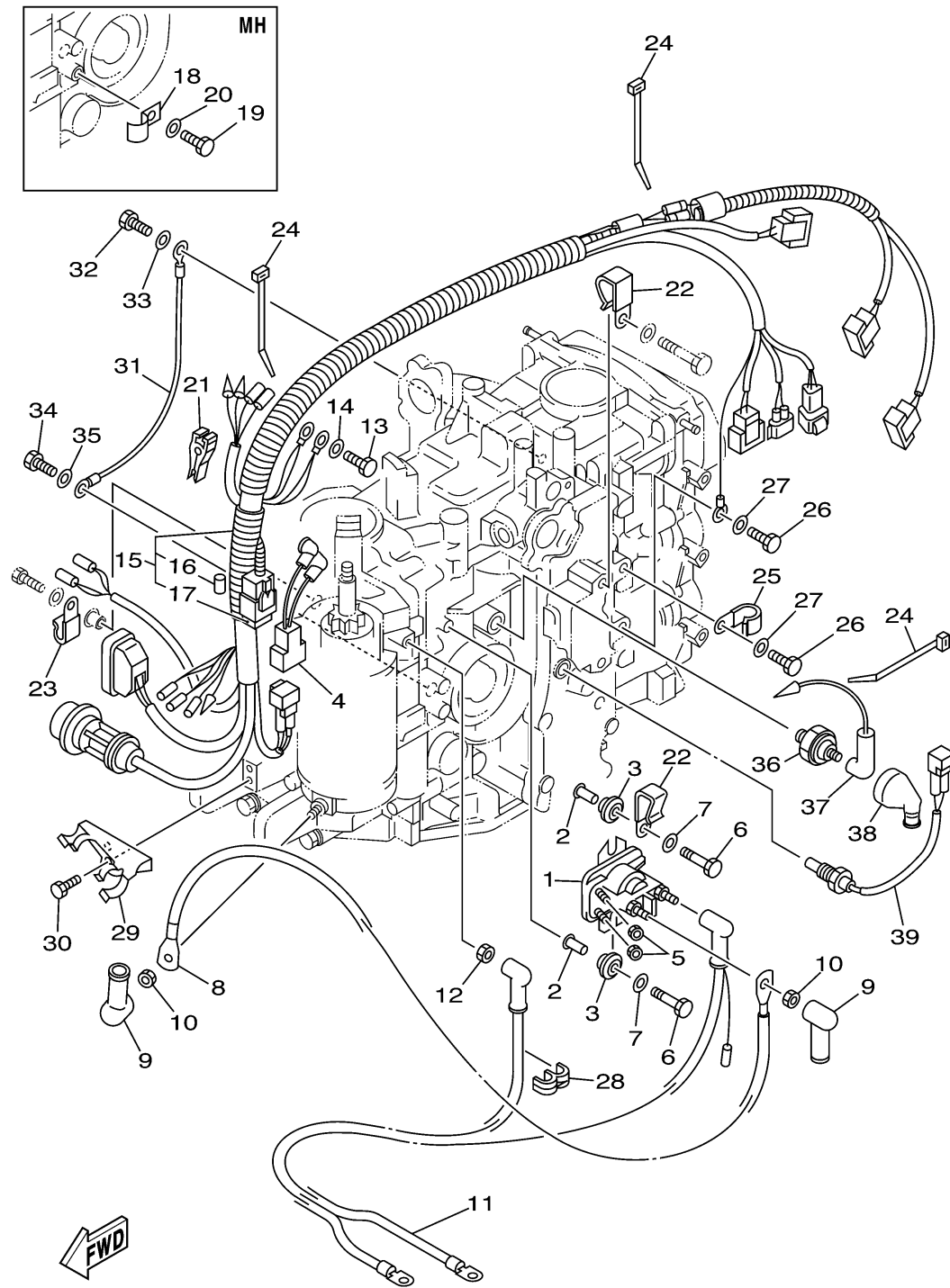


ELECTRICAL 2

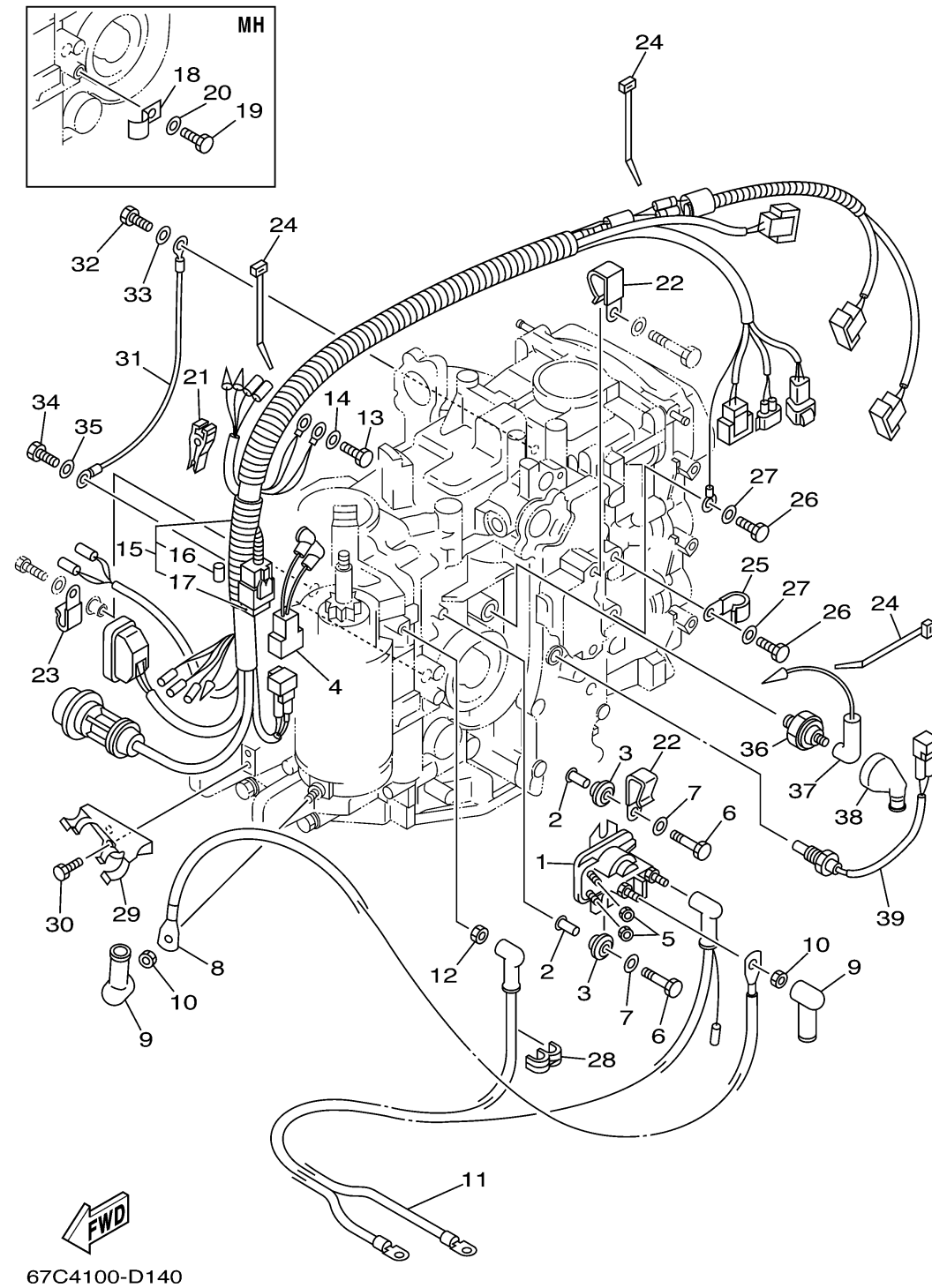


67C4100-D140

Ref No.	Part Number	Description	Qty	Remarks
1	65W-81941-00-00	STARTER RELAY ASSY	0	
2	65W-8191C-00-00	COLLAR	0	
3	65W-81922-00-00	GROMMET	0	
4	67C-82509-00-00	WIRE, SUB LEAD	0	
5	65W-8182A-00-00	NUT	0	
6	97095-06030-00	BOLT	0	
7	92995-06600-00	WASHER	0	
8	65W-82117-00-00	WIRE, LEAD	0	
9	6G5-82119-10-00	COVER, LEAD WIRE	0	
10	65W-8182B-00-00	NUT, SPECIAL	0	
11	67C-82105-U0-00	BATTERY CABLE	0	
12	65W-8182B-00-00	NUT, SPECIAL	0	
13	97095-06012-00	BOLT	0	
14	92995-06600-00	WASHER	0	
15	67C-82590-50-00	WIRE HARNESS ASSY	0	
15	67C-82590-10-00	WIRE HARNESS ASSY	0	
15	67C-82590-00-00	WIRE HARNESS ASSY	1	
16	67F-82151-00-00	..FUSE (20A)	0	
17	67F-8215B-00-00	..CAP (BLACK)	0	
18	90465-08M63-00	CLAMP	1	

CONTINUED ON NEXT FRAME >

ELECTRICAL 2

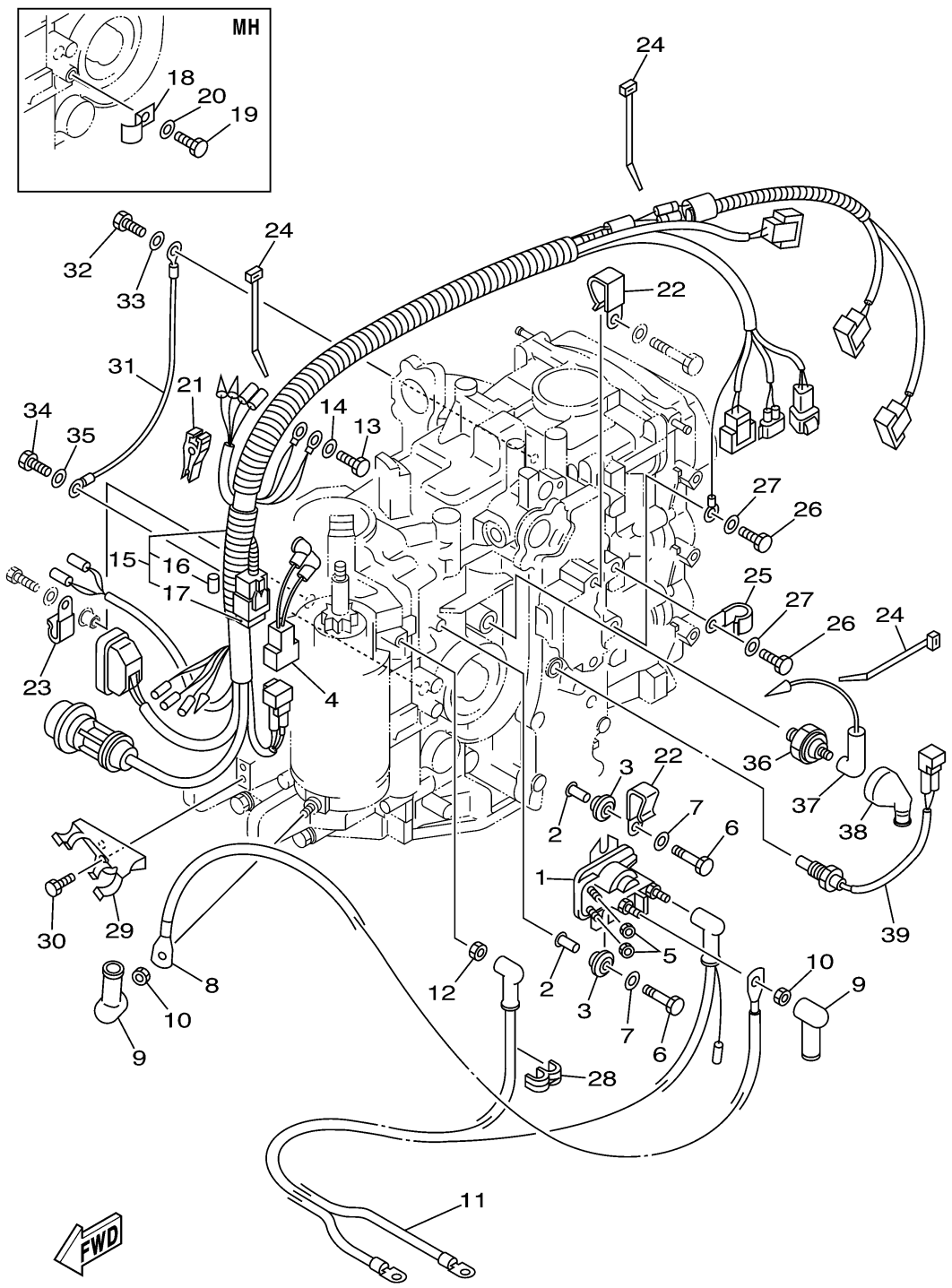


Ref No.	Part Number	Description	Qty	Remarks
19	97095-06012-00	BOLT	1	
20	92995-06600-00	WASHER	1	
21	67F-2812A-00-00	PULLER, FUSE	0	
22	90465-05M87-00	CLAMP	2	
23	90465-06M90-00	CLAMP	1	
24	90465-13M18-00	CLAMP	3	
25	90465-08M75-00	CLAMP	1	
26	97095-06012-00	BOLT	3	
27	92995-06600-00	WASHER	3	
28	90464-10M57-00	CLAMP	0	
29	67C-82594-00-00	CLAMP	0	
30	97095-05012-00	.BOLT	0	
31	67C-82519-00-00	WIRE, EARTH LEAD	1	
32	97095-08012-00	BOLT	1	
33	92995-08600-00	WASHER	1	
34	97095-06012-00	BOLT	1	
35	92995-06600-00	WASHER	1	
36	65W-82504-00-00	OIL PRESSURE SWITCH ASSY	1	
37	65W-82127-00-00	WIRE, LEAD 2	1	
38	65W-82532-00-00	CAP	1	

CONTINUED ON NEXT FRAME >

ELECTRICAL 2

Ref No.	Part Number	Description	Qty	Remarks
39	67C-85790-00-00	THERMOSENSOR ASSY	1	



67C4100-D140