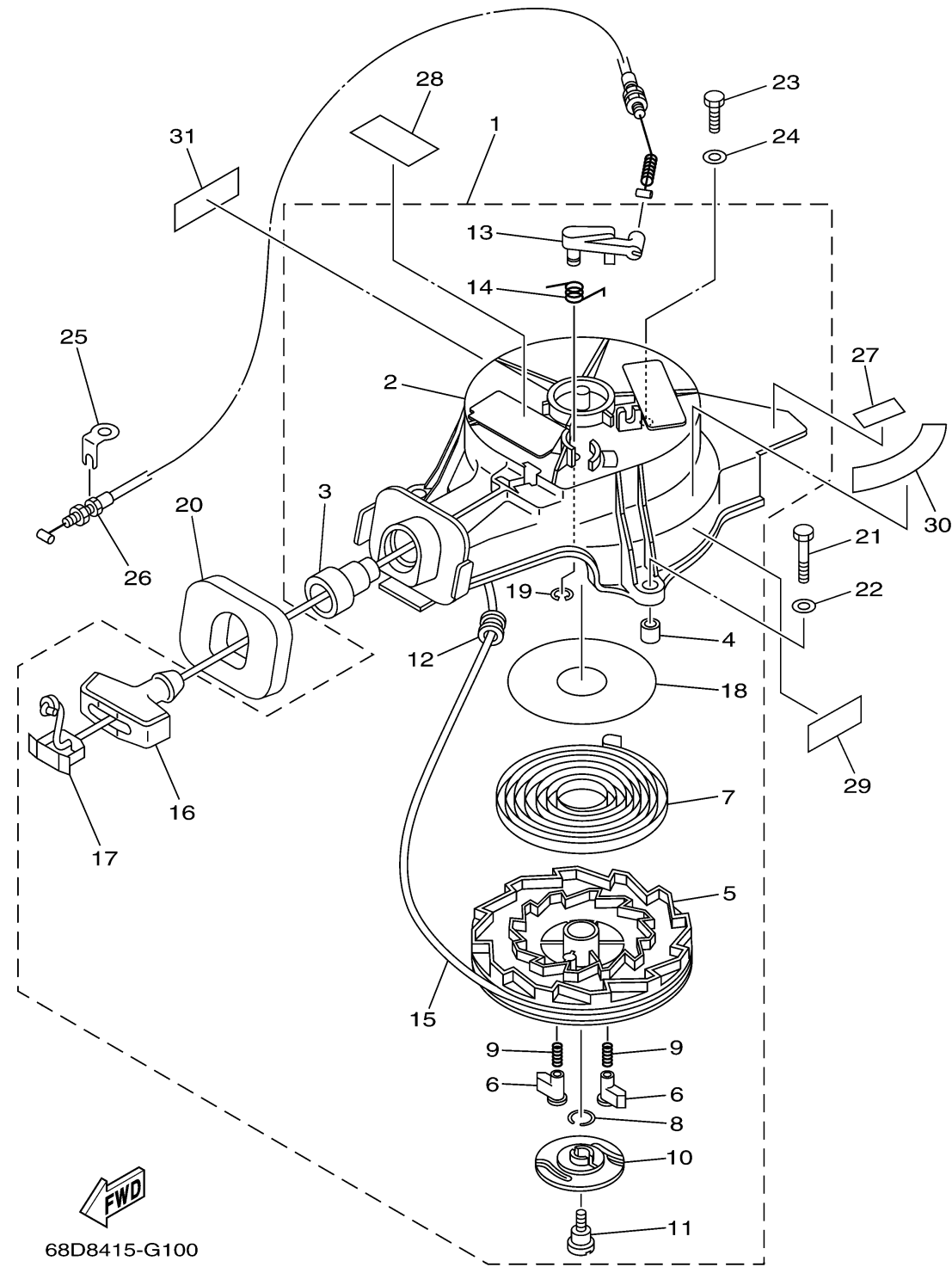


STARTER

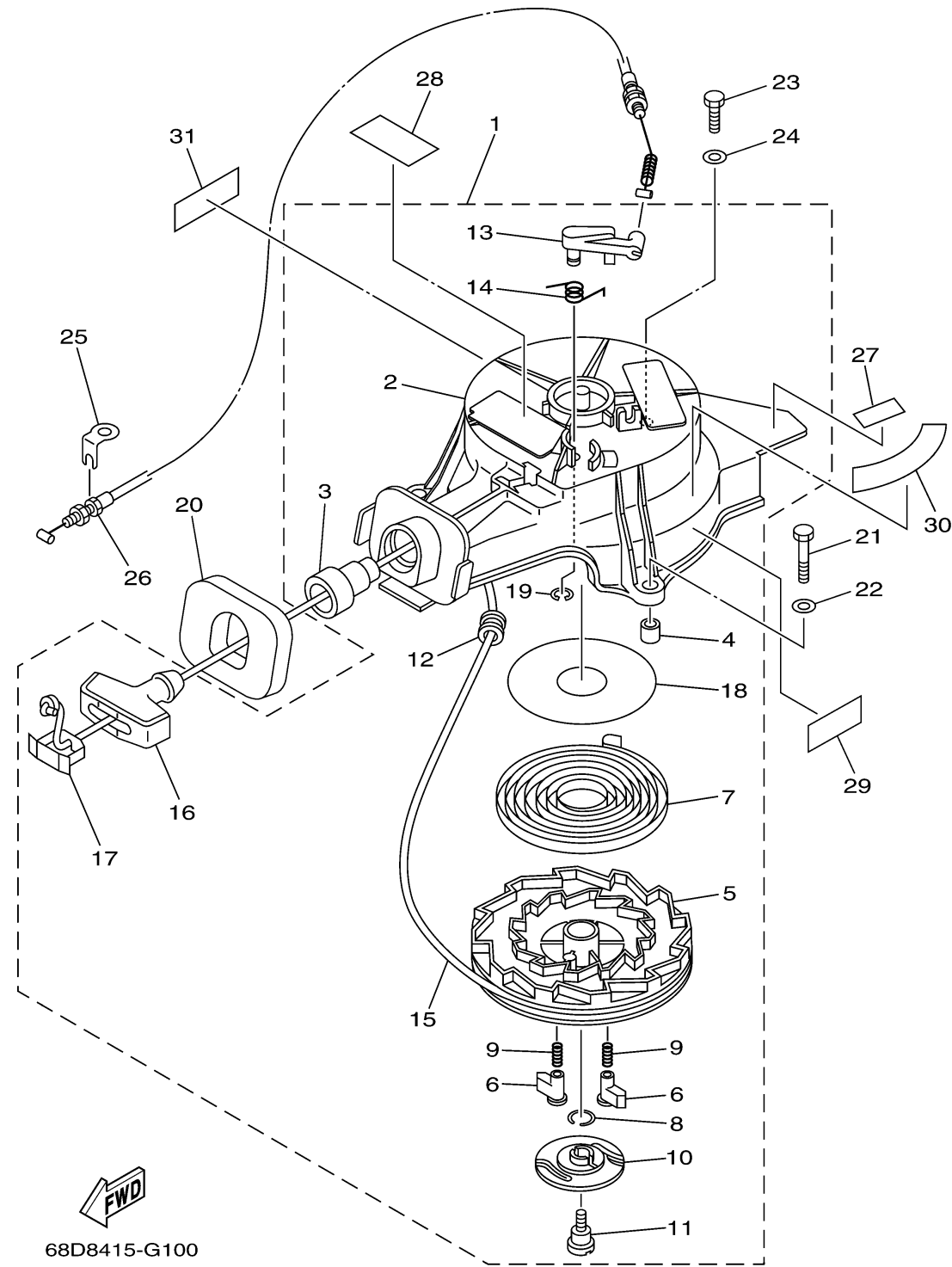


68D8415-G100

Ref No.	Part Number	Description	Qty	Remarks
1	67D-15710-02-00	STARTER ASSY	1	
2	67D-15711-01-00	..CASE, STARTER	1	
3	63V-15795-01-00	..GUIDE, ROPE	1	
4	67D-15764-00-00	..COLLAR 1	3	
5	67D-15714-00-00	..DRUM, SHEAVE	1	
6	67D-15741-00-00	..PAWL, DRIVE	2	
7	67D-15713-00-00	..SPRING, STARTER	1	
8	67D-15705-00-00	..SPRING, DRIVE PAWL	1	
9	67D-15767-00-00	..SPRING	2	
10	67D-15735-00-00	..GUIDE, CAM	1	
11	67D-15793-00-00	..SCREW	1	
12	63V-15764-00-00	..COLLAR 1	1	
13	67D-15794-01-00	..STOPPER	1	
14	67D-15734-00-00	..SPRING, RETURN	1	
15	90890-44372-00	.. STARTER ROPE	1	UNAVAILABLE - OBTAIN LOCALLY, CUT TO 1.8M
16	6G1-15755-00-00	..HANDLE, STARTER	1	
17	6G1-15779-00-00	..COVER	1	
18	67D-15739-00-00	..WASHER, THRUST	1	
19	67D-15744-00-00	..CIRCLIP	1	
20	67D-15762-00-00	SEAL, RUBBER 2	1	

CONTINUED ON NEXT FRAME >

STARTER



68D8415-G100

Ref No.	Part Number	Description	Qty	Remarks
21	97095-06035-00	BOLT	2	
22	92995-06600-00	WASHER	2	
23	97095-06020-00	BOLT	1	
24	92995-06600-00	WASHER	1	
25	67D-15772-00-00	STAY 2	1	
26	67D-15770-00-00	CABLE COMP., STARTER STOP	1	
27	67D-42791-10-00	MARK 1	1	
28	6AH-81995-40-00	LABEL, WARNING	1	
29	68D-E3437-41-00	MARK, CAUTION	1	
30	68D-E4427-41-00	LABEL, INSTRUCTION	1	
31	6AH-81994-40-00	LABEL, SAFETY	1	