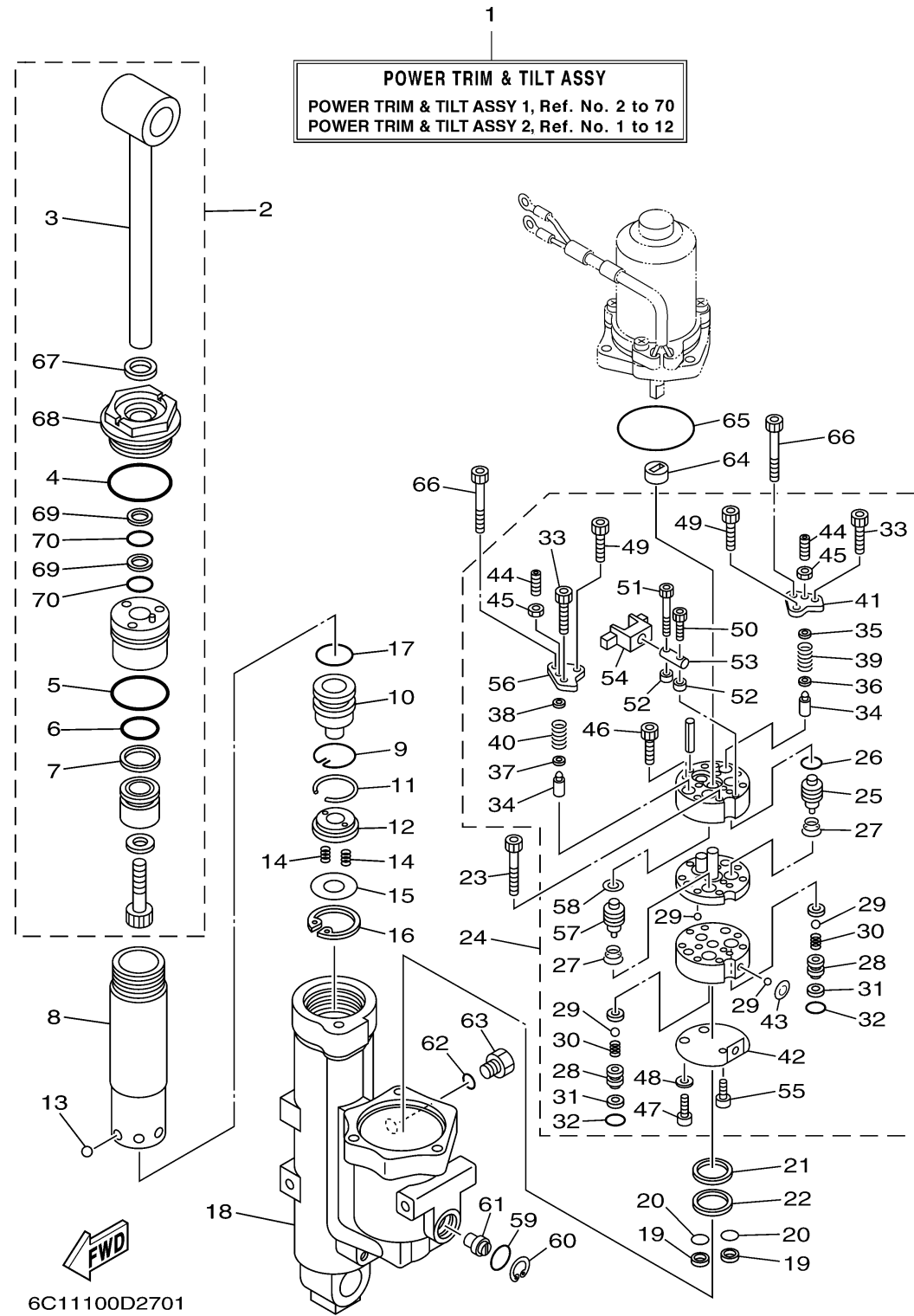


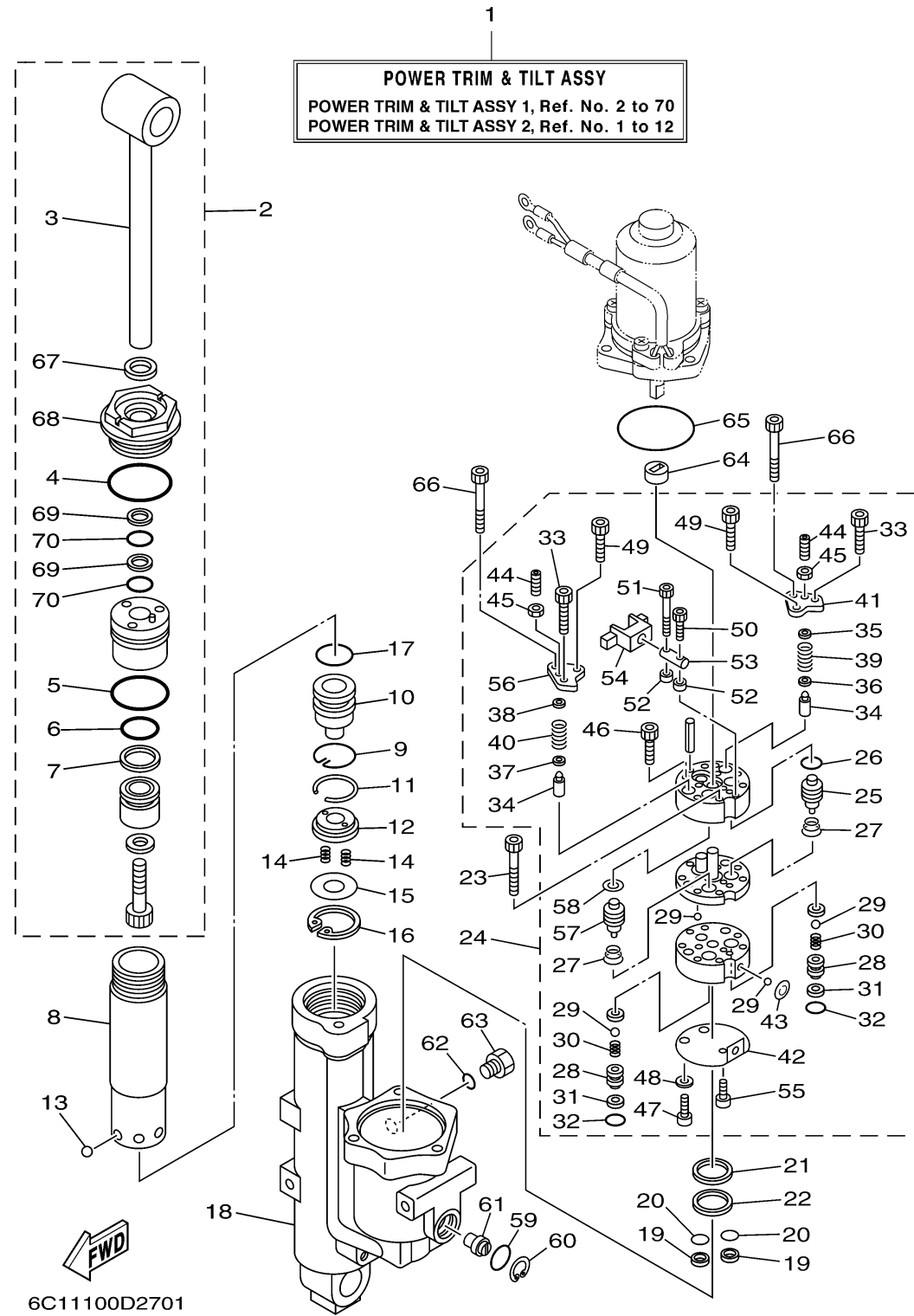
POWER TRIM TILT ASSY 1



Ref No.	Part Number	Description	Qty	Remarks
1	6C5-43800-01-8D	POWER TRIM & TILT ASSY	1	
2	6C5-43810-00-00	. TILT PISTON SUB ASSY	1	
3	6C5-43801-00-00	...ROD	1	
4	62Y-43863-00-00	...O-RING	1	
5	6C5-43862-00-00	...O-RING	1	
6	6C5-43861-00-00	.. O-RING	1	
7	6C5-43871-00-00	...RING, BACK UP	1	
8	6C5-22471-00-00	CYLINDER, SHOCK ABSORBER	1	
9	6C5-43875-00-00	RING, SNAP	1	
10	6C5-4381B-00-00	FREE PISTON SUB ASSY	1	
11	93450-32116-00	CIRCLIP	1	
12	6C5-43899-00-00	PLATE STOPPER	1	
13	93503-16003-00	BALL	6	
14	62X-4384H-00-00	SPRING	2	
15	6C5-22435-00-00	PLATE, VALVE 2	1	
16	99009-32500-00	CIRCLIP	1	
17	6C5-43861-00-00	O-RING	1	
18	6C5-4380K-00-00	CYLINDER, TILT SUB ASSY	1	
19	6C5-43817-10-00	FILTER 2	2	
20	69J-4389J-00-00	.O-RING	2	

CONTINUED ON NEXT FRAME >

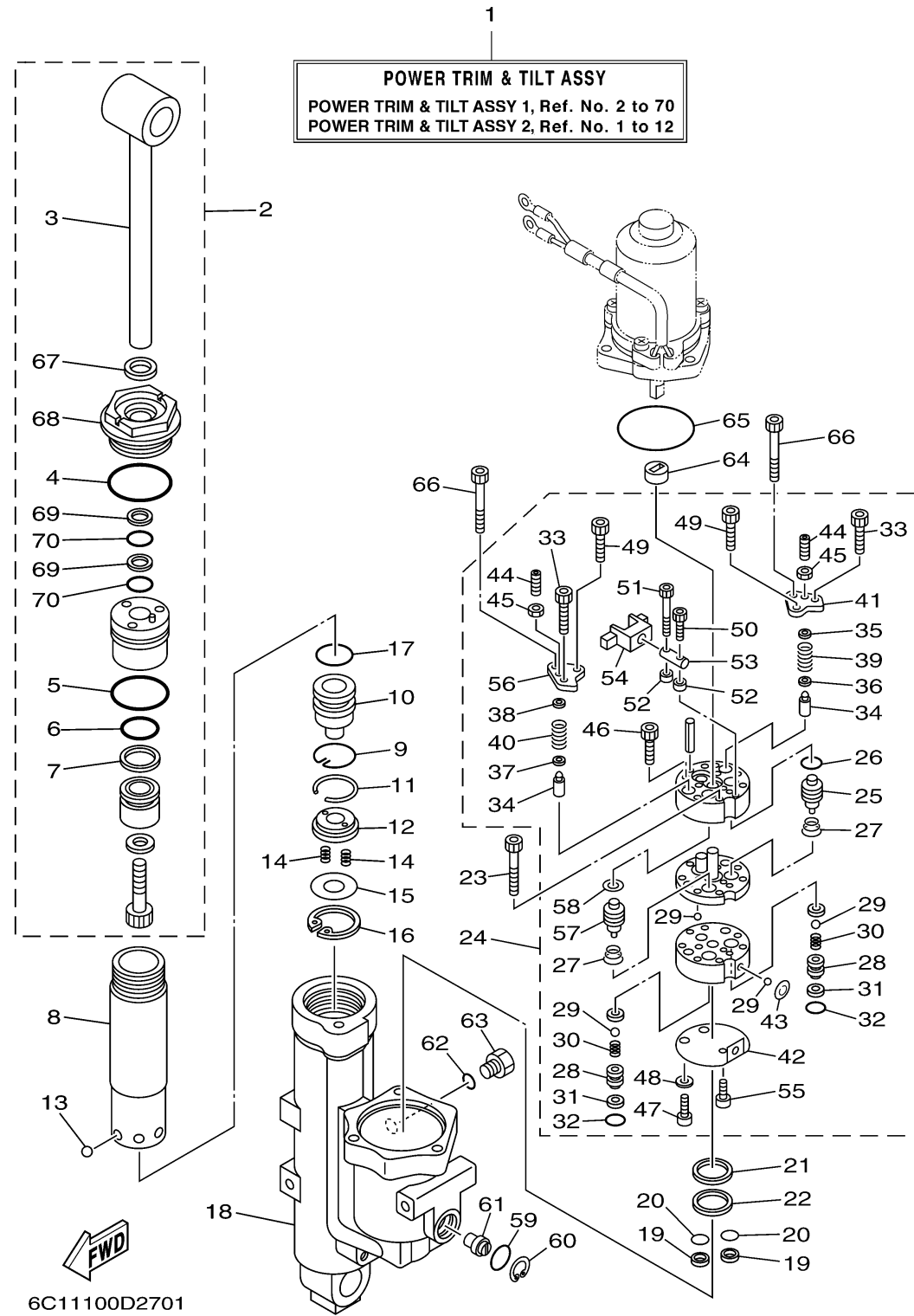
POWER TRIM TILT ASSY 1



Ref No.	Part Number	Description	Qty	Remarks
21	6C5-43816-00-00	FILTER 1	1	
22	6C5-4380G-00-00	PLATE	1	
23	91312-05045-00	BOLT	2	
24	6C5-43830-00-00	GEAR PUMP ASSY	1	
25	6C6-43841-00-00	.PISTON, SHUTTLE	1	
26	6H1-43883-00-00	.O-RING	1	
27	6C6-43894-00-00	.SPRING, SHUTTLE RETURN	2	
28	6C6-4382E-00-00	.ADAPTOR 2	2	
29	93505-32038-00	.BALL	6	
30	6C6-43853-00-00	.SPRING, MAIN VALVE	2	
31	6C6-4387G-00-00	.WASHER	2	
32	69J-4389J-00-00	.O-RING	2	
33	91312-05030-00	.BOLT	2	
34	6C5-43851-00-00	.SEAT, RELIEF VALVE	2	
35	6C5-4381K-00-00	.HOLDER	1	
36	6C5-43893-00-00	.WASHER	1	
37	6C6-43893-00-00	.WASHER	1	
38	6C6-4381K-00-00	.HOLDER	1	
39	6C5-43855-00-00	.SPRING, UP RELIEF	1	
40	6C5-43856-00-00	.SPRING, DOWN RELIEF	1	

CONTINUED ON NEXT FRAME >

POWER TRIM TILT ASSY 1



Ref No.	Part Number	Description	Qty	Remarks
41	6C5-4382K-00-00	..CAP, RELIEF VALVE	1	
42	6C5-43895-00-00	..SEAT, RELIEF VALVE	1	
43	6C5-43854-00-00	..SPRING, MANUAL RELEASE	1	
44	92A08-03110-00	..SCREW SET	2	
45	95302-03600-00	..NUT	2	
46	91312-05025-00	..BOLT	2	
47	6C6-43878-00-00	..BOLT, SOCKET	2	
48	62Y-4387G-00-00	..WASHER	2	
49	91312-04030-00	..BOLT	2	
50	91312-03016-00	..BOLT	1	
51	6C6-4388E-00-00	..PLUG, TAPER SCREW	1	
52	6C6-4388F-00-00	..SPACER	2	
53	6C6-4386G-00-00	..PIN, STRAIGHT 2	1	
54	6C6-4386E-00-00	..LEVER 1	1	
55	91312-03005-00	..BOLT	1	
56	6C5-4382L-00-00	..CAP, RELIEF VALVE	1	
57	6C5-43841-00-00	..PISTON, SHUTTLE	1	
58	6C5-43872-00-00	..RING, BACK UP	1	
59	93210-18397-00	O-RING	1	
60	6H1-43875-00-00	RING, SNAP	1	

CONTINUED ON NEXT FRAME >

