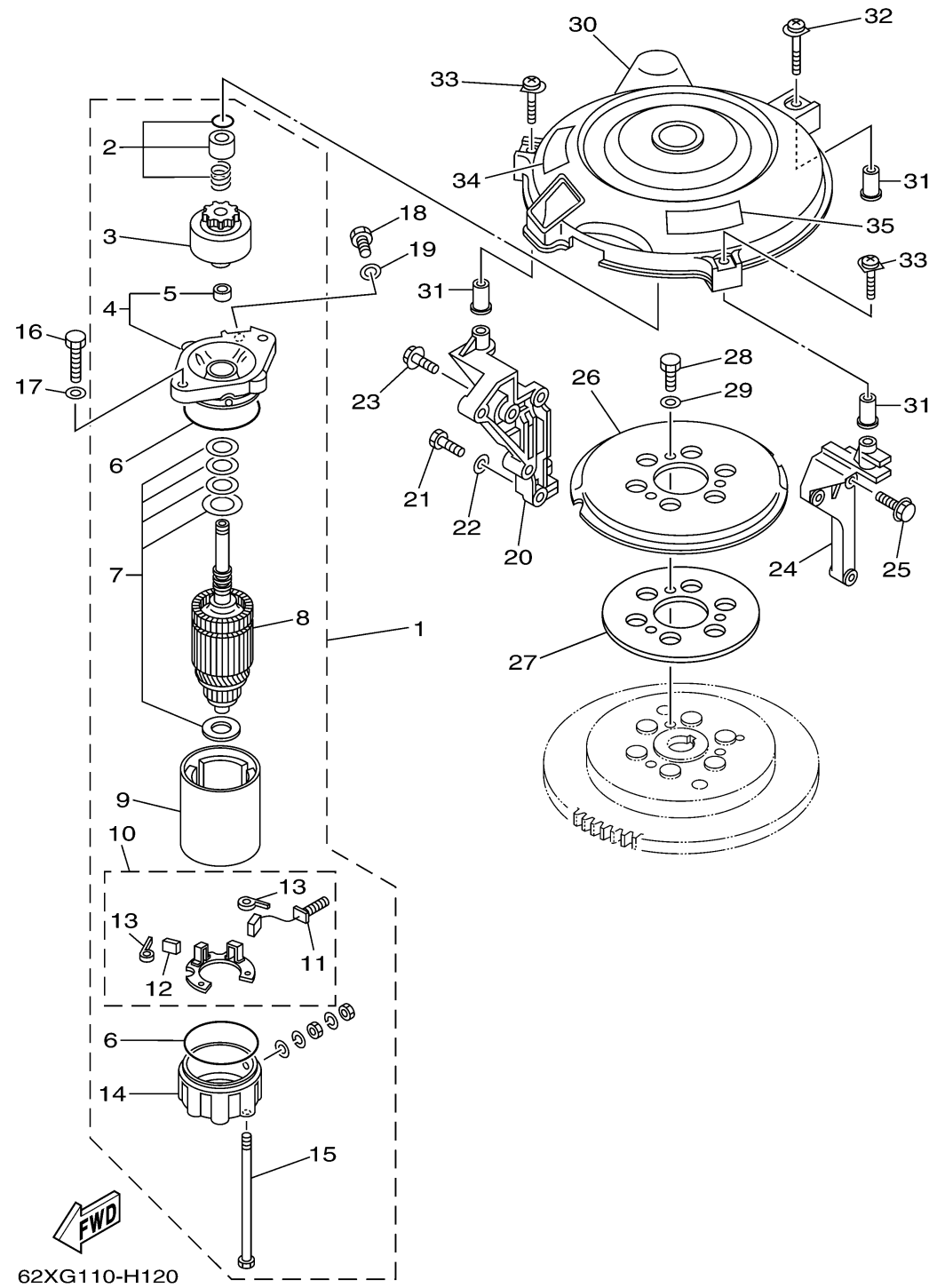


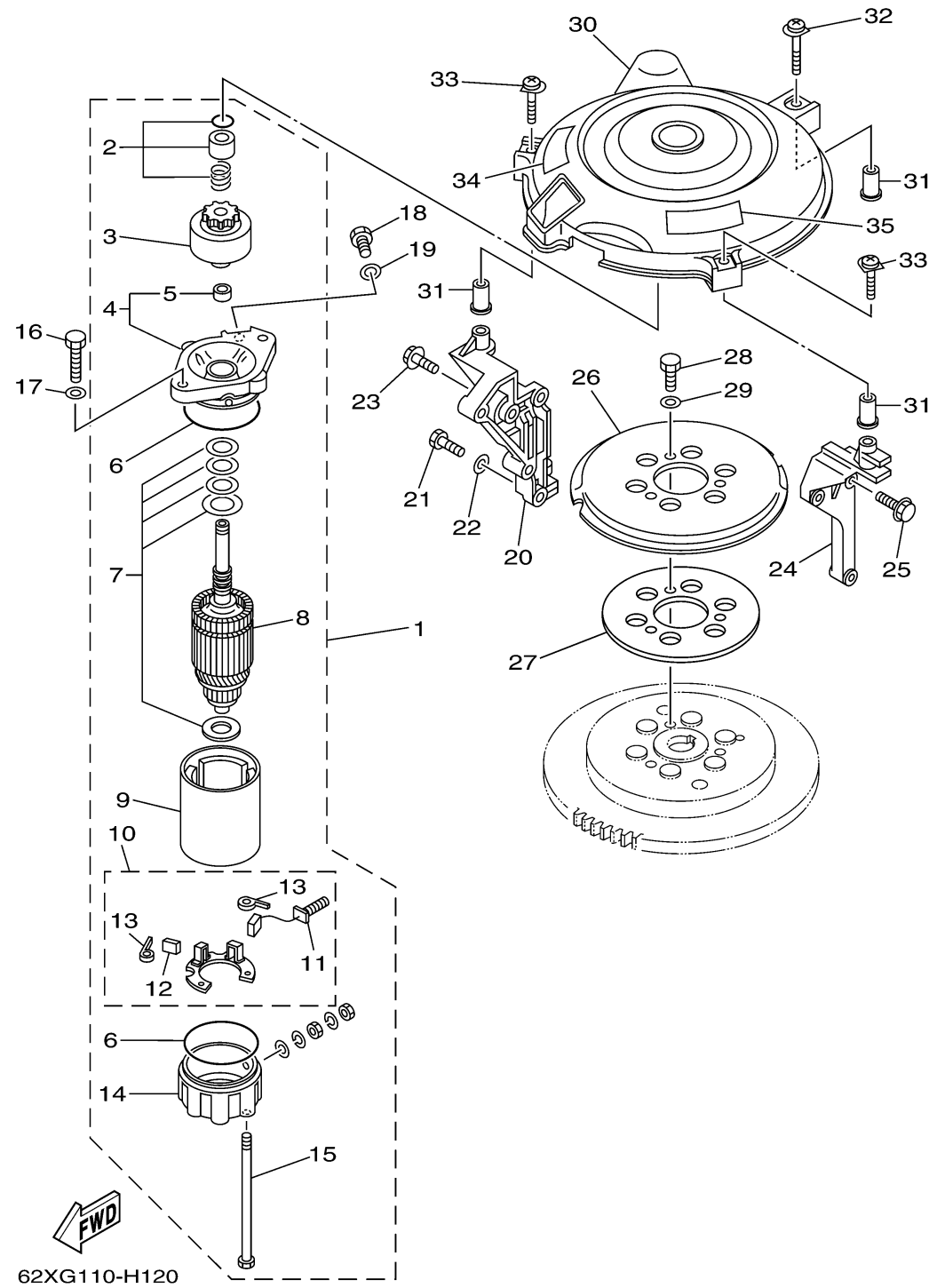
# STARTING MOTOR



Ref No.	Part Number	Description	Qty	Remarks
1	6F5-81800-11-00	STARTING MOTOR ASSY	1	
2	689-81857-11-00	. PINION STOPPER SET	1	
3	689-81807-12-00	. GEAR ASSY, STARTING MOTOR	1	
4	6F5-81830-11-00	. .FRONT BRACKET ASSY	1	
5	689-81831-00-00	. . METAL, FRONT	1	
6	689-81847-11-00	. O-RING	2	
7	689-81809-11-00	. WASHER KIT	1	
8	689-81850-12-00	. ARMATURE ASSY	1	
9	689-81810-11-00	. STATOR ASSY	1	
10	689-81840-11-00	. BRUSH HOLDER ASSY	1	
11	689-81811-11-00	. . BRUSH 1	1	
12	689-81812-11-00	. . BRUSH 2	1	
13	689-81813-10-00	. . SPRING, BRUSH	2	
14	689-81820-11-00	. REAR BRACKET ASSEMBLY	1	
15	689-81826-10-00	. BOLT	2	
16	97013-08030-00	BOLT	2	
17	92903-08600-00	WASHER, PLATE	2	
18	97013-08016-00	BOLT	1	
19	92903-08600-00	WASHER, PLATE	1	
20	63D-15771-00-4D	STAY 1	1	

CONTINUED ON NEXT FRAME >

# STARTING MOTOR



Ref No.	Part Number	Description	Qty	Remarks
21	97013-08025-00	BOLT	2	
22	92903-08600-00	WASHER, PLATE	2	
23	90119-06MA2-00	BOLT, WITH WASHER	1	
24	6H4-15772-02-94	STAY 2	1	
25	90119-06MA3-00	BOLT, WITH WASHER	3	
26	6J8-15723-E1-00	PULLEY, STARTER	1	
27	6J8-81365-A0-00	GASKET, HOLE COVER	1	
28	97013-08014-00	BOLT	3	
29	92903-08600-00	WASHER, PLATE	3	
30	6H4-81337-01-00	COVER, FLYWHEEL	1	
31	90387-06M65-00	COLLAR	3	
32	90159-06M21-00	SCREW, WITH WASHER	1	
33	90159-06M22-00	SCREW, WITH WASHER	2	
34	6AH-81995-40-00	LABEL, WARNING	1	
35	6AG-81996-00-00	MARK	1	