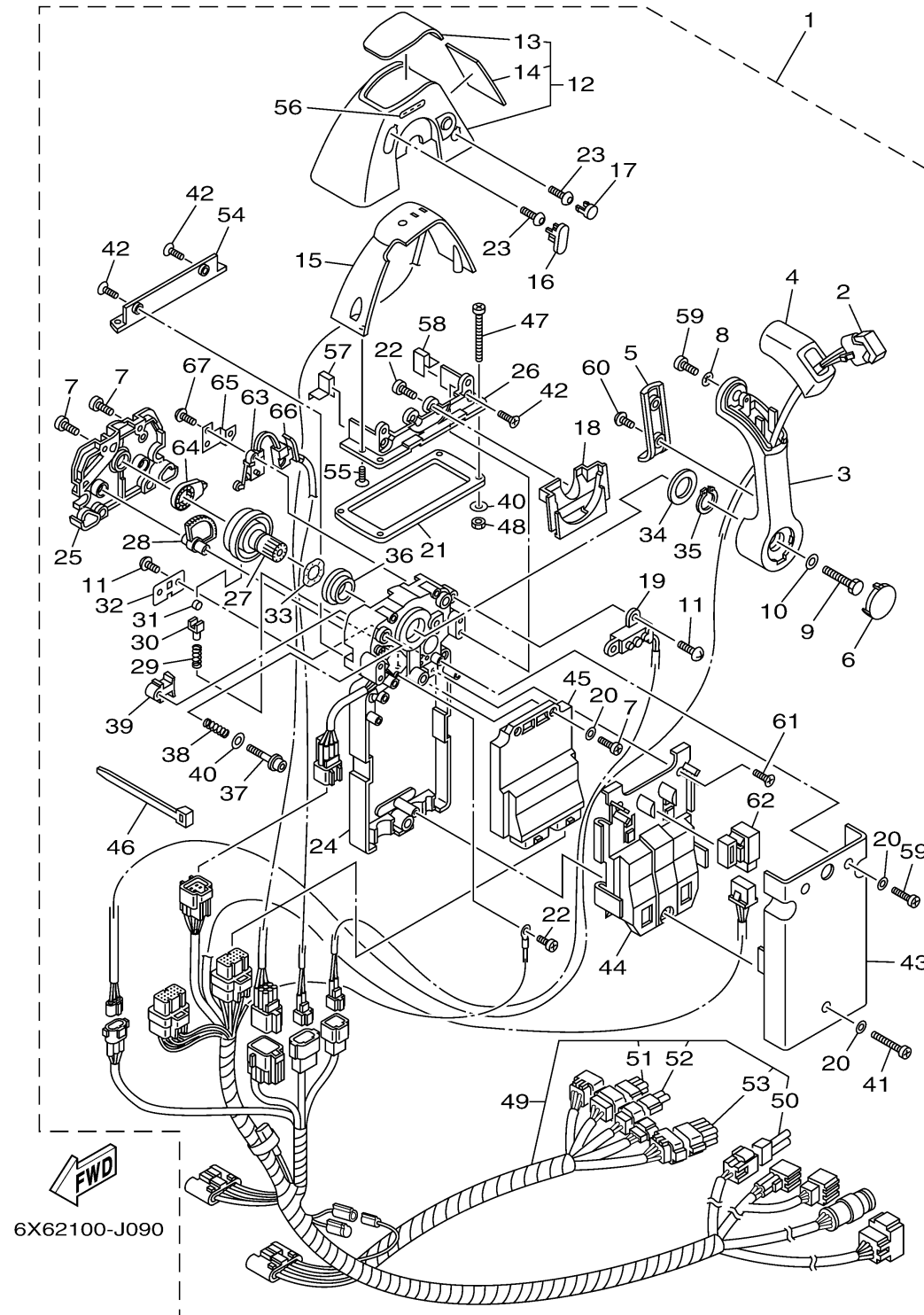


DEC REMOTE CONTROL (SINGLE)

6X6 REMOTE CONTROL (SINGLE)

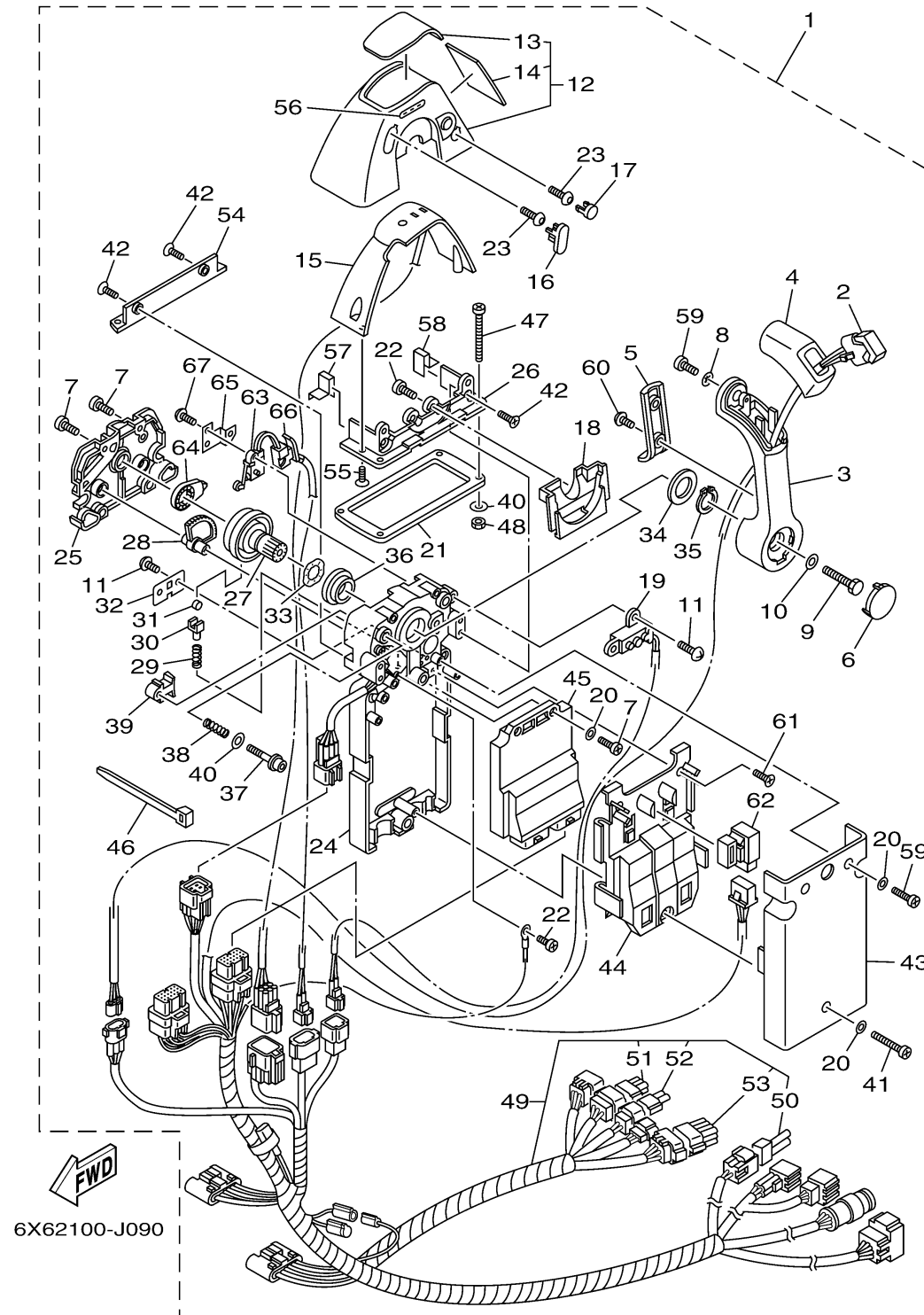


Ref No.	Part Number	Description	Qty	Remarks
1	6X6-48205-41-00	REMOTE CONTROL ASSY (SINGLE)	1	ORDER FROM O/B SALES
1	6X6-48205-51-00	REMOTE CONTROL ASSY (SINGLE)	1	ORDER FROM O/B SALES
2	6X6-82563-00-00	. TRIM & TILT SWITCH ASSY	1	
3	6X6-48221-00-00	. LEVER, CONTROL	1	
4	6X6-48222-00-00	. GRIP, CONTROL LEVER	1	
5	6X6-48224-00-00	. COVER, CONTROL LEVER	1	
6	6X6-48224-10-00	. COVER, CONTROL LEVER	1	
7	98580-05014-00	. .SCREW, PAN HEAD	6	
8	92990-05300-00	. WASHER, INTERNAL TOOTH	1	
9	6X6-48171-00-00	. .BOLT	1	
10	92990-08600-00	. .WASHER, PLATE	1	
11	EL8-48127-00-00	. .SCREW 1	4	
12	6X6-48119-04-00	. .COVER	1	
13	6X6-48215-30-00GRAPHIC	1	
14	6X6-48216-00-00GRAPHIC	1	
15	6X6-84301-00-00	. .PILOT LIGHT ASSY 1	1	
16	6X6-48167-00-00	. .PLUG	1	
17	6X6-48167-50-00	. .PLUG	1	
18	6X6-48219-00-00	. .COVER, LEAD	1	
19	6X6-8259E-00-00	. SWITCH ASSY	1	

CONTINUED ON NEXT FRAME >

DEC REMOTE CONTROL (SINGLE)

6X6 REMOTE CONTROL (SINGLE)

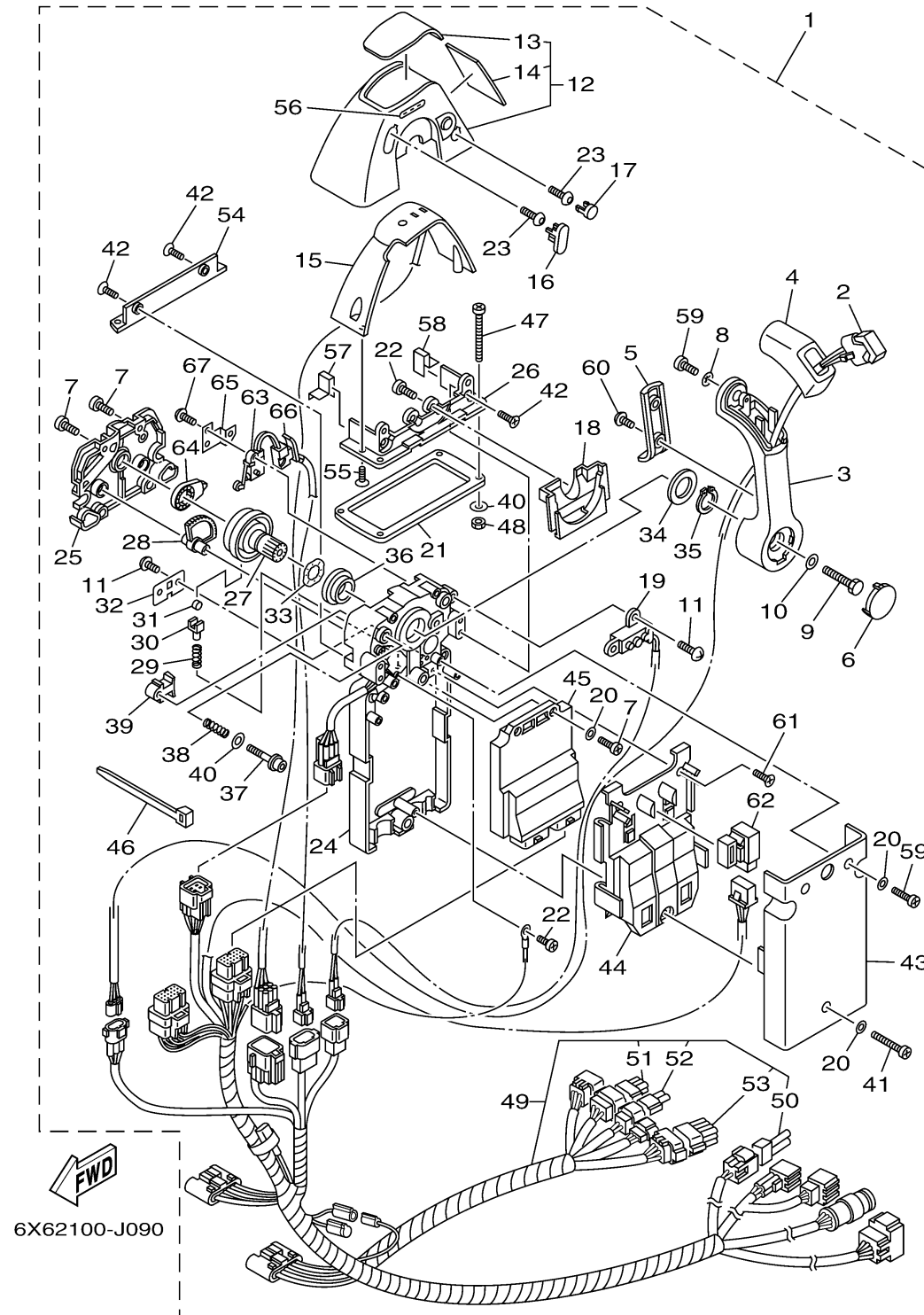


Ref No.	Part Number	Description	Qty	Remarks
20	92990-05200-00	. .WASHER, PLAIN	5	
21	6X6-48176-00-00	. .GROMMET	1	
22	98580-04010-00	. .SCREW, PAN HEAD	3	
23	92D80-05016-00	. .BOLT, SOCKET HEAD	2	
24	6X6-481A0-01-00	. .REMO-CON. CASE ASSY	1	
25	6X6-48212-00-00	. .BACK PLATE 1	1	
26	6X6-48144-10-00	. .PLATE, STOPPER 2	1	
27	6X6-48242-01-00	. .SHAFT, DRIVE	1	
28	6X6-48233-01-00	. .GEAR 2	1	
29	6X6-48238-00-00	. .SPRING, DETENT	1	
30	6X6-48237-00-00	. .ADAPTOR	1	
31	6X6-48236-00-00	. .ROLLER, DETENT	1	
32	6X6-48189-00-00	. .RETAINER	1	
33	703-48198-00-00	. .WASHER, WAVE	1	
34	6X6-48193-00-00	. .WASHER 3	1	
35	6X6-48118-00-00	. .CLIP, SHIFT LEVER	1	
36	6X6-48234-00-00	. .BUSHING 1	1	
37	6X6-48267-00-00	. .BOLT SET	1	
38	6X6-48158-00-00	. .SPRING 1	1	
39	6X6-48264-00-00	. .FRICTION, THROTTLE	1	

CONTINUED ON NEXT FRAME >

DEC REMOTE CONTROL (SINGLE)

6X6 REMOTE CONTROL (SINGLE)

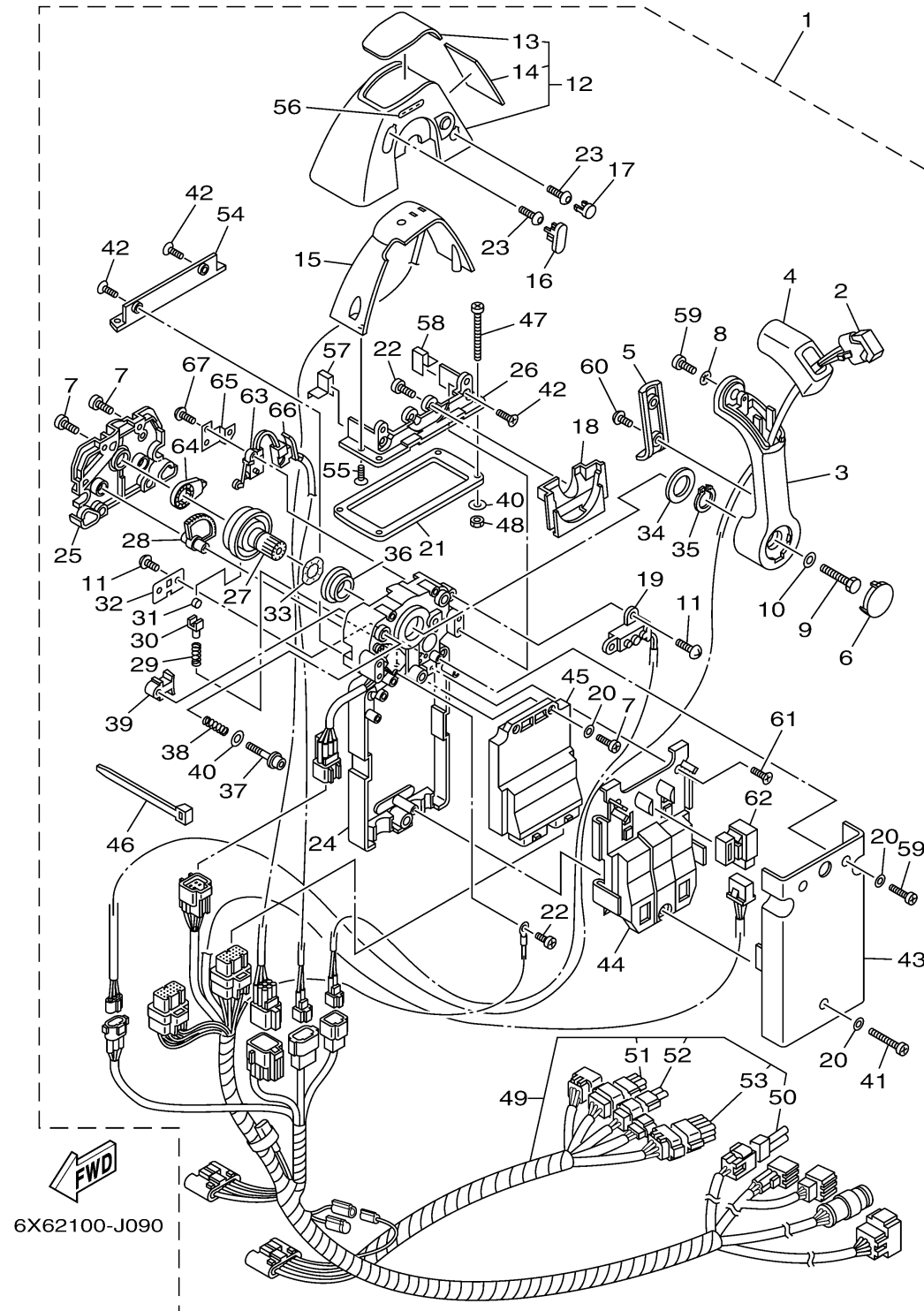


Ref No.	Part Number	Description	Qty	Remarks
40	704-48287-00-00	. .WASHER	5	
41	6X6-81145-00-00	. SCREW 1	1	
42	98780-05014-00	. SCREW, FLAT HEAD	4	
43	6X6-48213-00-00	. BACK PLATE 2	1	
44	6X6-48228-00-00	. HOLDER, SWITCH	1	
45	6X6-85590-20-00	. .CONTROL UNIT ASSY	1	
46	703-82591-00-00	. BAND	4	
47	97780-50145-00	. SCREW, TAPPING	4	UR
47	98580-05060-00	. SCREW, PAN HEAD	4	UR
48	95380-05600-00	. NUT	4	
49	6X6-82590-A0-00	. WIRE HARNESS ASSY	1	FOR 6X6-48205-41
49	6X6-82590-D0-00	. . .WIRE HARNESS ASSY	1	FOR 6X6-48205-51
50	6X6-82585-20-00	. . .CAP 2 (2P)	1	
51	6X6-82582-60-00	. . .CAP 1 (6P)	1	FOR 6X6-82590-A0
52	6X6-82582-40-00	. . .CAP 1 (4P)	1	FOR 6X6-82590-A0
53	6X6-82582-B0-00	. . .CAP 1 (12P)	1	FOR 6X6-82590-A0
54	6X6-48144-00-00	. .PLATE, STOPPER 2	1	
55	6X6-48129-00-00	. SCREW 3	2	
56	6X6-44191-00-00	. INDICATOR, SHIFT	1	
57	6X6-48176-50-00	. GROMMET	1	

CONTINUED ON NEXT FRAME >

DEC REMOTE CONTROL (SINGLE)

6X6 REMOTE CONTROL (SINGLE)



Ref No.	Part Number	Description	Qty	Remarks
58	6X6-48176-60-00	. GROMMET	1	
59	6X6-48127-00-00	. SCREW 1	3	
60	6X6-48128-00-00	. SCREW 2	2	
61	6X6-81146-00-00	. SCREW 2	2	
62	704-81950-10-00	. RELAY ASSY	1	
63	6X6-82540-00-00	. NEUTRAL SWITCH ASSY	1	
64	6X6-48241-00-00	. ARM, DRIVE	1	
65	6X6-48245-01-00	. PLATE, LOCK	1	
66	6X6-82545-00-00	. GROMMET	1	
67	6X6-8252V-00-00	. SCREW, SPECIAL	2	