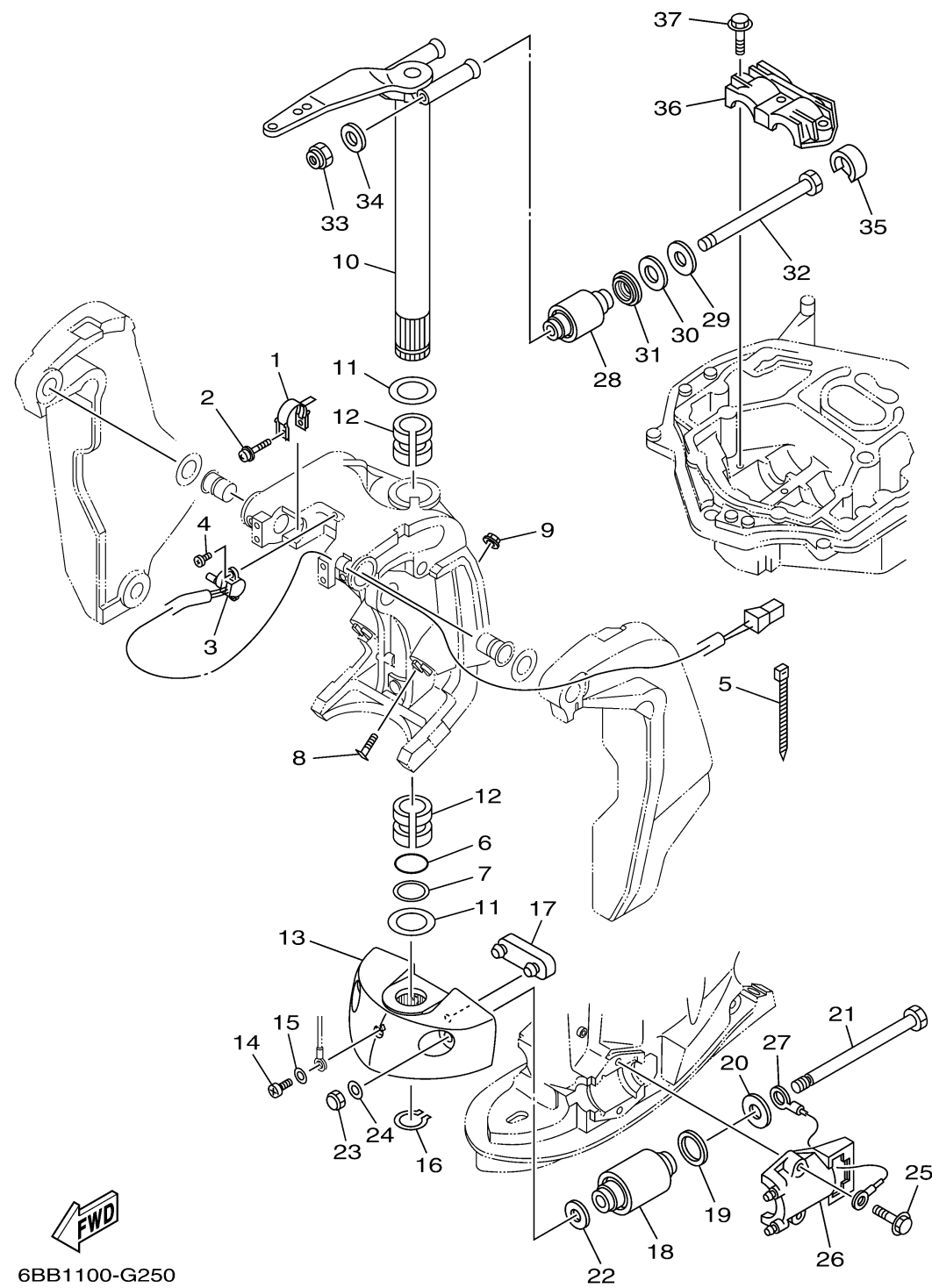


6BB1100-G250

BRACKET 2

Ref No.	Part Number	Description	Qty	Remarks
1	64E-43139-10-00	CAM, TRIM SENDER	1	
2	90159-05059-00	SCREW, WITH WASHER	1	
3	67H-83672-00-00	TRIM SENDER	1	
4	97885-06016-00	SCREW, PAN HEAD	2	
5	90465-11M10-00	CLAMP	3	
6	93210-37MH7-00	O-RING	1	
7	90202-40M47-00	WASHER, PLATE	1	
8	64E-43376-00-00	BOLT, THRUST RECEIVER	2	
9	95780-10300-00	NUT, FLANGE	2	
10	66K-42510-02-8D	STEERING BRACKET ASSY	1	
11	90201-38M60-00	WASHER, PLATE	2	
12	90386-38M32-00	BUSH	2	
13	6BB-44551-00-8D	HOUSING, LOWER MOUNT RUBBER	1	
14	97885-06012-00	SCREW, PAN HEAD	1	
15	92995-06600-00	WASHER	1	
16	93410-37M04-00	CIRCLIP	1	
17	6E5-44575-00-00	DAMPER, LOWER MOUNT RUBBER	1	
18	60X-44555-00-94	MOUNT DAMPER, LOWER SIDE	2	
19	90202-32M19-00	WASHER, PLATE	2	
20	90201-16016-00	WASHER, PLATE	2	

CONTINUED ON NEXT FRAME >



6BB1100-G250

BRACKET 2

Ref No.	Part Number	Description	Qty	Remarks
21	90109-14M80-00	BOLT	2	
22	90201-15M58-00	WASHER, PLATE	2	
23	95380-14800-00	NUT	2	
24	92995-14600-00	WASHER	2	
25	90119-10024-00	BOLT, WITH WASHER	4	
26	61A-44552-01-CA	HOUSING, LOWER MOUNT RUBBER 2	2	
27	6E5-82149-00-00	WIRE, LEAD 3	1	
28	69J-44514-00-94	MOUNT DAMPER, UPPER SIDE	2	
29	90201-16015-00	WASHER, PLATE	2	
30	90202-28M46-00	WASHER, PLATE	2	
31	69J-44532-00-00	STOPPER, UPPER MOUNT	2	
32	90101-14003-00	BOLT	2	
33	90185-14M00-00	NUT, SELF-LOCKING	2	
34	92995-14600-00	WASHER	2	
35	69J-44533-00-00	DAMPER, UPPER MOUNT RUBBER	2	
36	61A-44511-01-94	COVER, UPPER MOUNT	1	
37	90119-10024-00	BOLT, WITH WASHER	3	