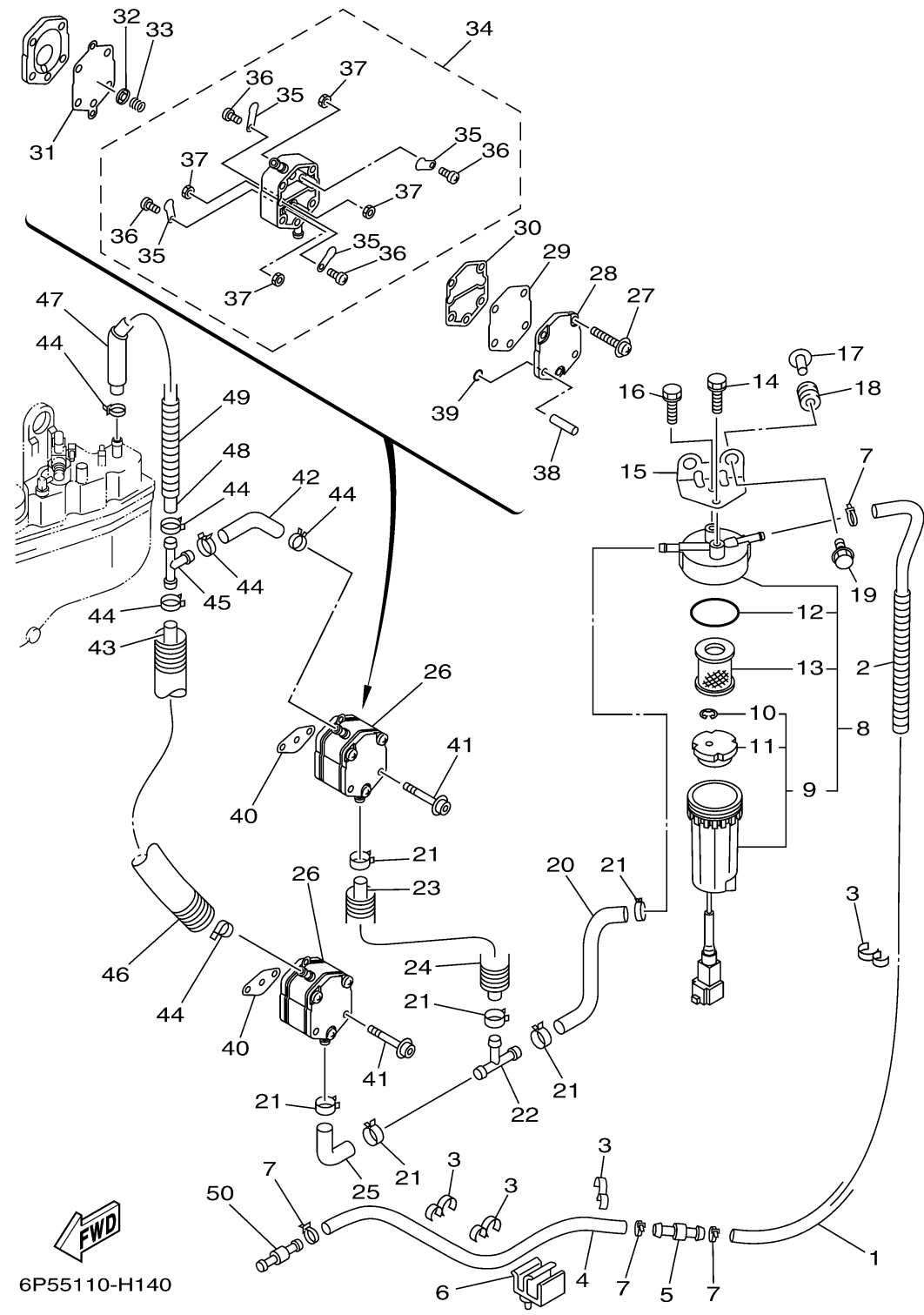


6P55110-H140

# FUEL

Ref No.	Part Number	Description	Qty	Remarks
1	61A-24313-00-00	PIPE 3	1	
2	90447-13008-00	TUBE	1	
3	90464-13M34-00	CLAMP	4	
4	90445-13016-00	HOSE (L2700)	1	
5	6R3-24377-00-00	PIPE, JOINT 2	1	
6	6E5-82594-00-00	CLAMP	1	
7	90465-11M10-00	CLAMP	4	
8	6P3-24560-11-00	FILTER ASSY	1	
9	6P3-24562-11-00	. .CUP, FILTER	1	
10	6P3-24519-00-00	. . .CLIP	1	
11	6P3-24469-00-00	. . .FLOAT, WATER LEVEL	1	
12	6P3-24564-00-00	. GASKET	1	
13	6P3-24563-00-00	. ELEMENT, FILTER	1	
14	97595-06514-00	BOLT, WITH WASHER	1	
15	68F-24566-00-00	BRACKET, FILTER	1	
16	97595-06514-00	BOLT, WITH WASHER	1	
17	90387-06M60-00	COLLAR	2	
18	90480-10M23-00	GROMMET	2	
19	90119-06M88-00	BOLT, WITH WASHER	2	
20	68F-24311-00-00	PIPE, FUEL 1	1	

CONTINUED ON NEXT FRAME >

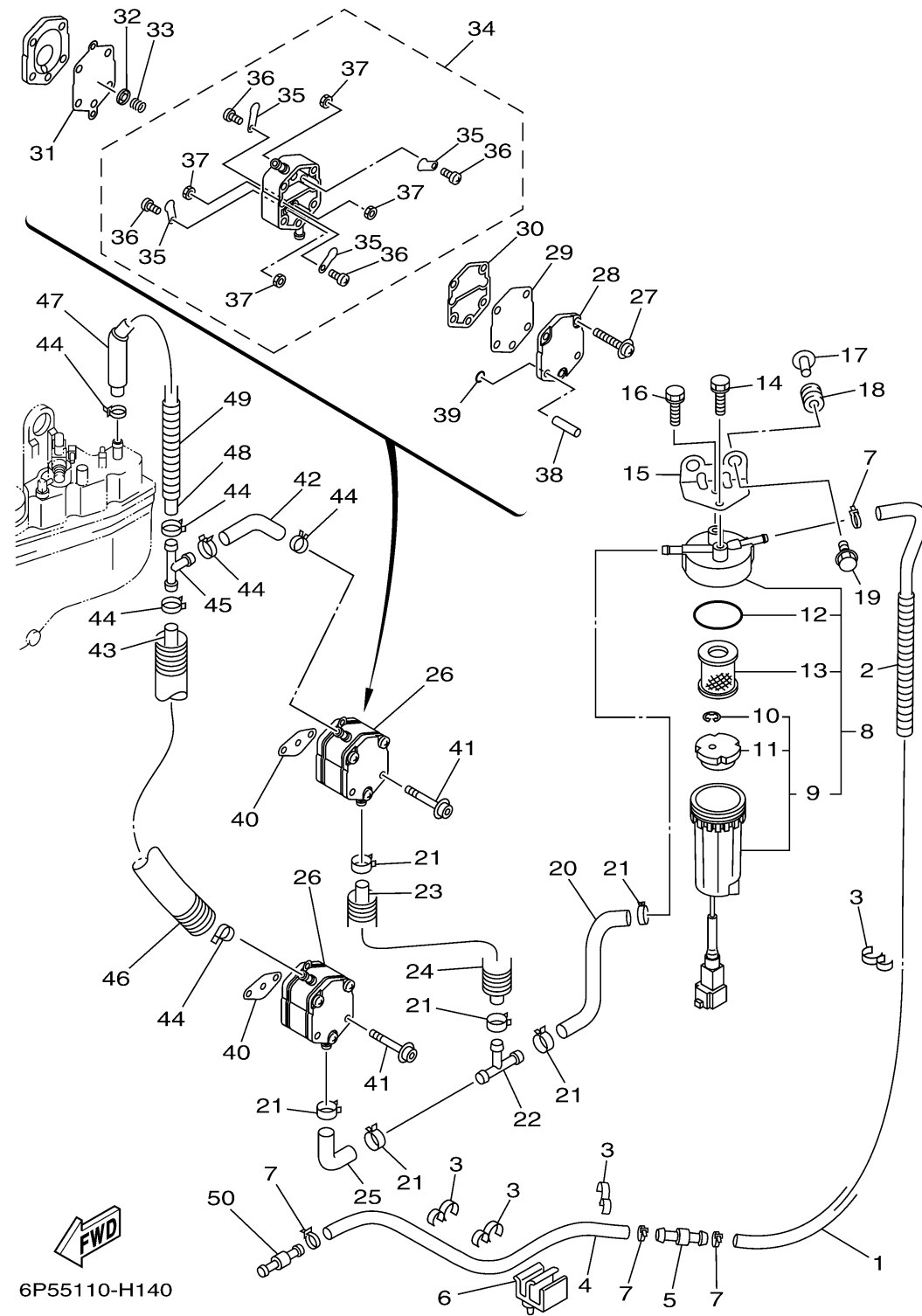


# FUEL

Ref No.	Part Number	Description	Qty	Remarks
21	90465-11M10-00	CLAMP	6	
22	6E5-24378-00-00	PIPE, JOINT 3	1	
23	6G5-24315-00-00	PIPE 5	1	
24	90447-19004-00	HOSE, WITH SPRING (L=130)	1	
25	6E5-24315-00-00	PIPE 5	1	
26	6E5-24410-04-00	FUEL PUMP ASSY	2	
27	6E5-24444-01-00	..SCREW	3	
28	6E5-24413-01-00	..BODY 2	1	
29	6E5-24471-01-00	..DIAPHRAGM	1	
30	6E5-24435-01-00	..GASKET, BODY 2	1	
31	6E5-24411-01-00	..DIAPHRAGM	1	
32	648-24424-00-00	..SEAT, SPRING	1	
33	6E5-24423-00-00	..SPRING, DIAPHRAGM	1	
34	6E5-24412-11-00	..BODY 1	1	
35	6A0-24421-01-00	...VALVE, CHECK	4	
36	6A0-14325-00-00	...SCREW, PAN HEAD	4	
37	95380-03600-00	...NUT	4	
38	6E5-24492-00-00	..BUSH, FUEL PUMP	2	
39	6E5-24486-00-00	..O-RING	2	
40	650-24431-A0-00	GASKET, FUEL PUMP 1	2	

CONTINUED ON NEXT FRAME >

# FUEL



Ref No.	Part Number	Description	Qty	Remarks
41	90110-06128-00	BOLT, HEXAGON SOCKET HEAD	4	
42	6G5-24316-10-00	PIPE 6	1	
43	6E5-24313-00-00	PIPE 3	1	
44	90465-11M10-00	CLAMP	6	
45	6E5-24378-00-00	PIPE, JOINT 3	1	
46	90447-15002-00	TUBE	1	
47	90446-15M07-00	HOSE (L60)	1	
48	90445-13M12-00	HOSE (L235)	1	
49	90447-13008-00	TUBE	1	
50	6R3-24377-10-00	PIPE, JOINT 2	1	