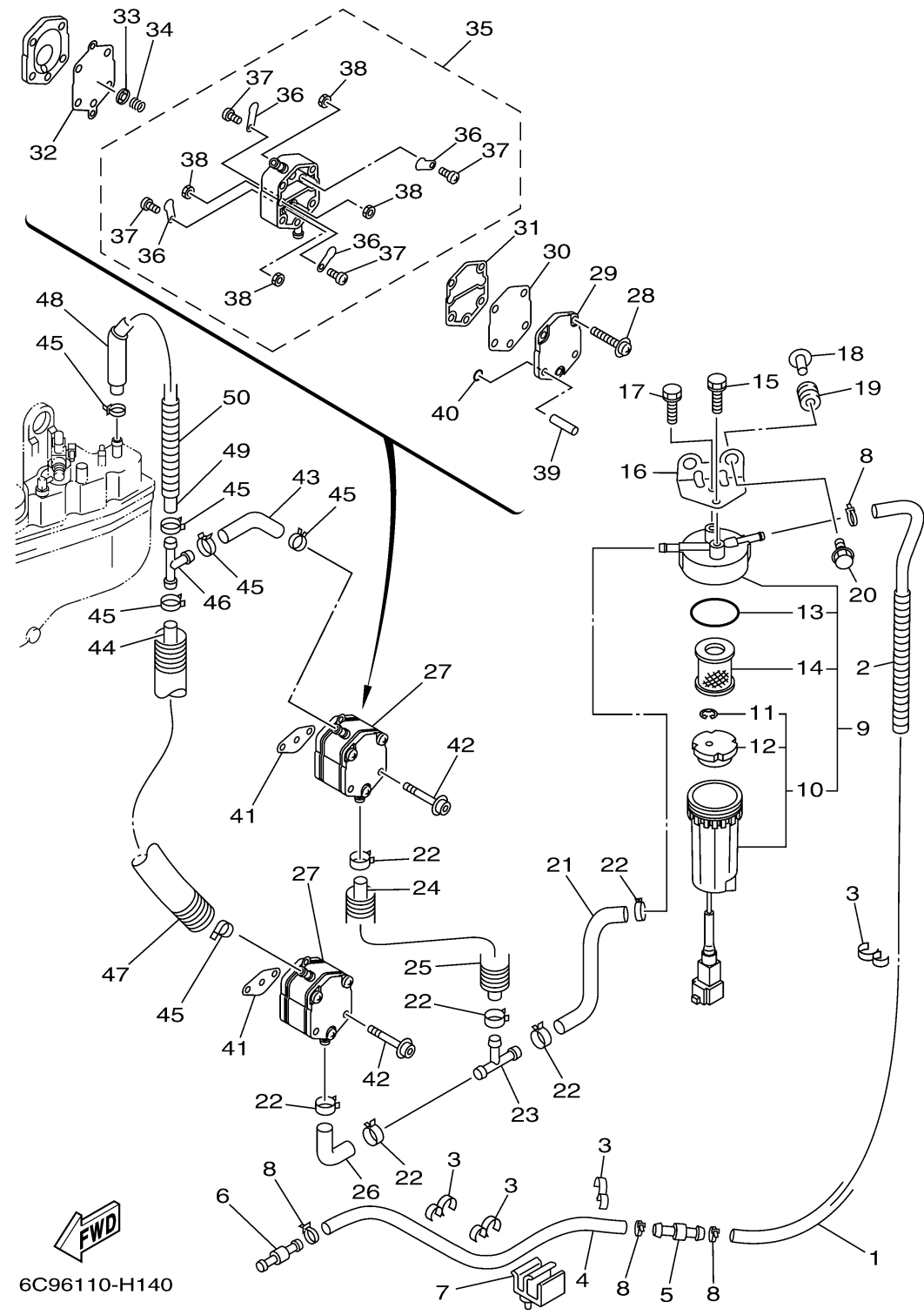


6C96110-H140

FUEL

| Ref No. | Part Number | Description | Qty | Remarks |
|---------|-----------------|---------------------------|-----|---------|
| 1 | 61A-24313-00-00 | PIPE 3 | 1 | |
| 2 | 90447-13008-00 | TUBE | 1 | |
| 3 | 90464-13M34-00 | CLAMP | 4 | |
| 4 | 90445-13016-00 | HOSE (L2700) | 1 | |
| 5 | 6R3-24377-00-00 | PIPE, JOINT 2 | 1 | |
| 6 | 6R3-24377-10-00 | PIPE, JOINT 2 | 1 | |
| 7 | 6E5-82594-00-00 | CLAMP | 1 | |
| 8 | 90465-11M10-00 | CLAMP | 4 | |
| 9 | 6P3-24560-11-00 | FILTER ASSY | 1 | |
| 10 | 6P3-24562-11-00 | . . .CUP, FILTER | 1 | |
| 11 | 6P3-24519-00-00 |CLIP | 1 | |
| 12 | 6P3-24469-00-00 |FLOAT, WATER LEVEL | 1 | |
| 13 | 6P3-24564-00-00 | . GASKET | 1 | |
| 14 | 6P3-24563-00-00 | . ELEMENT, FILTER | 1 | |
| 15 | 97595-06514-00 | BOLT, WITH WASHER | 1 | |
| 16 | 68F-24566-00-00 | BRACKET, FILTER | 1 | |
| 17 | 97595-06514-00 | BOLT, WITH WASHER | 1 | |
| 18 | 90387-06M60-00 | COLLAR | 2 | |
| 19 | 90480-10M23-00 | GROMMET | 2 | |
| 20 | 90119-06M88-00 | BOLT, WITH WASHER | 2 | |

CONTINUED ON NEXT FRAME >

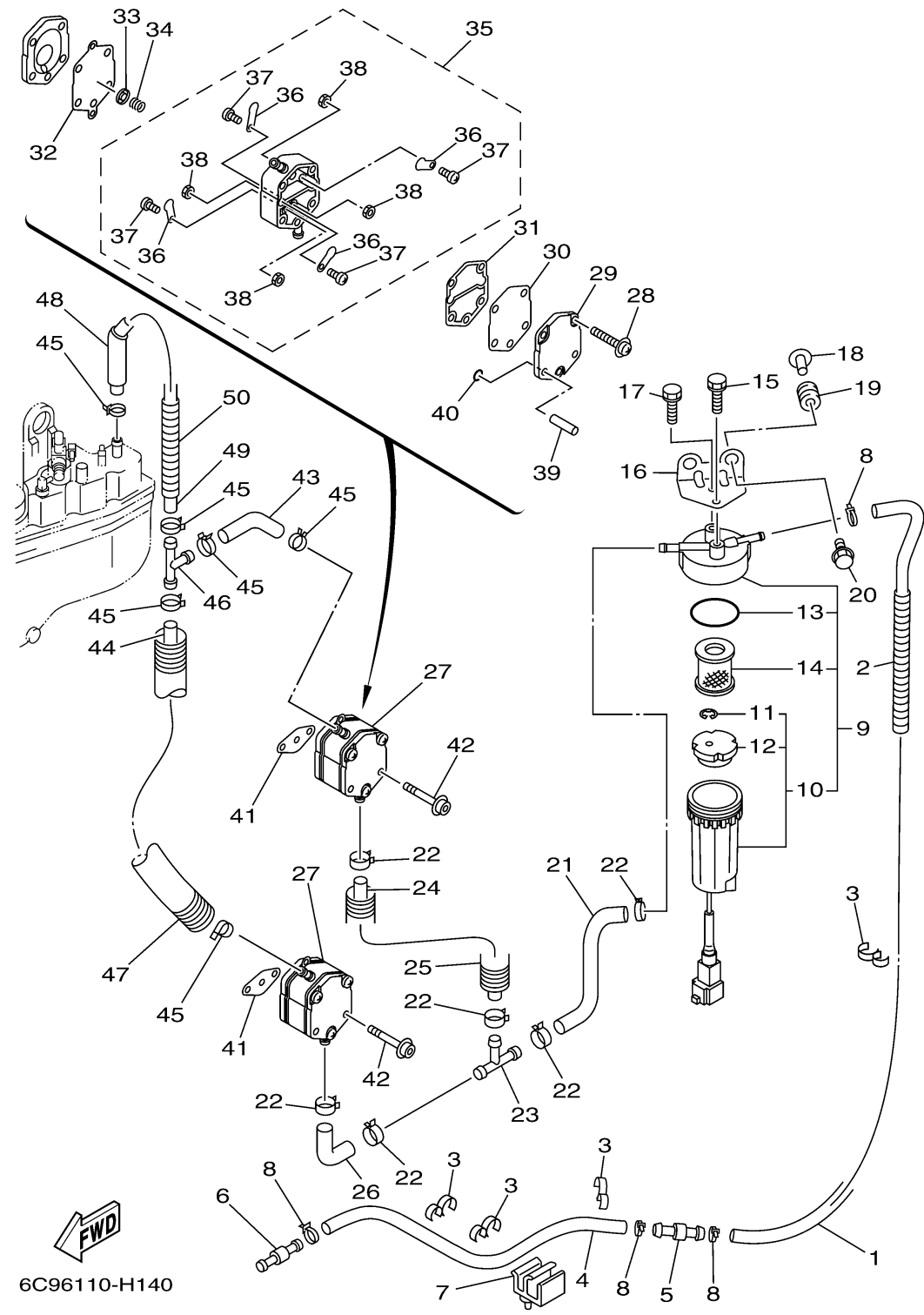


6C96110-H140

FUEL

| Ref No. | Part Number | Description | Qty | Remarks |
|---------|-----------------|---------------------------|-----|---------|
| 21 | 68F-24311-00-00 | PIPE, FUEL 1 | 1 | |
| 22 | 90465-11M10-00 | CLAMP | 6 | |
| 23 | 6E5-24378-00-00 | PIPE, JOINT 3 | 1 | |
| 24 | 6G5-24315-00-00 | PIPE 5 | 1 | |
| 25 | 90447-19004-00 | HOSE, WITH SPRING (L=130) | 1 | |
| 26 | 6E5-24315-00-00 | PIPE 5 | 1 | |
| 27 | 6E5-24410-04-00 | FUEL PUMP ASSY | 2 | |
| 28 | 6E5-24444-01-00 | ..SCREW | 3 | |
| 29 | 6E5-24413-01-00 | ..BODY 2 | 1 | |
| 30 | 6E5-24471-01-00 | ..DIAPHRAGM | 1 | |
| 31 | 6E5-24435-01-00 | ..GASKET, BODY 2 | 1 | |
| 32 | 6E5-24411-01-00 | ..DIAPHRAGM | 1 | |
| 33 | 648-24424-00-00 | ..SEAT, SPRING | 1 | |
| 34 | 6E5-24423-00-00 | ..SPRING, DIAPHRAGM | 1 | |
| 35 | 6E5-24412-11-00 | ..BODY 1 | 1 | |
| 36 | 6A0-24421-01-00 | ...VALVE, CHECK | 4 | |
| 37 | 6A0-14325-00-00 | ...SCREW, PAN HEAD | 4 | |
| 38 | 95380-03600-00 | ...NUT | 4 | |
| 39 | 6E5-24492-00-00 | ..BUSH, FUEL PUMP | 2 | |
| 40 | 6E5-24486-00-00 | ..O-RING | 2 | |

CONTINUED ON NEXT FRAME >



FUEL

| Ref No. | Part Number | Description | Qty | Remarks |
|---------|-----------------|---------------------------|-----|---------|
| 41 | 650-24431-A0-00 | GASKET, FUEL PUMP 1 | 2 | |
| 42 | 90110-06128-00 | BOLT, HEXAGON SOCKET HEAD | 4 | |
| 43 | 6G5-24316-10-00 | PIPE 6 | 1 | |
| 44 | 6E5-24313-00-00 | PIPE 3 | 1 | |
| 45 | 90465-11M10-00 | CLAMP | 6 | |
| 46 | 6E5-24378-00-00 | PIPE, JOINT 3 | 1 | |
| 47 | 90447-15002-00 | TUBE | 1 | |
| 48 | 90446-15M07-00 | HOSE (L60) | 1 | |
| 49 | 90445-13M12-00 | HOSE (L235) | 1 | |
| 50 | 90447-13008-00 | TUBE | 1 | |