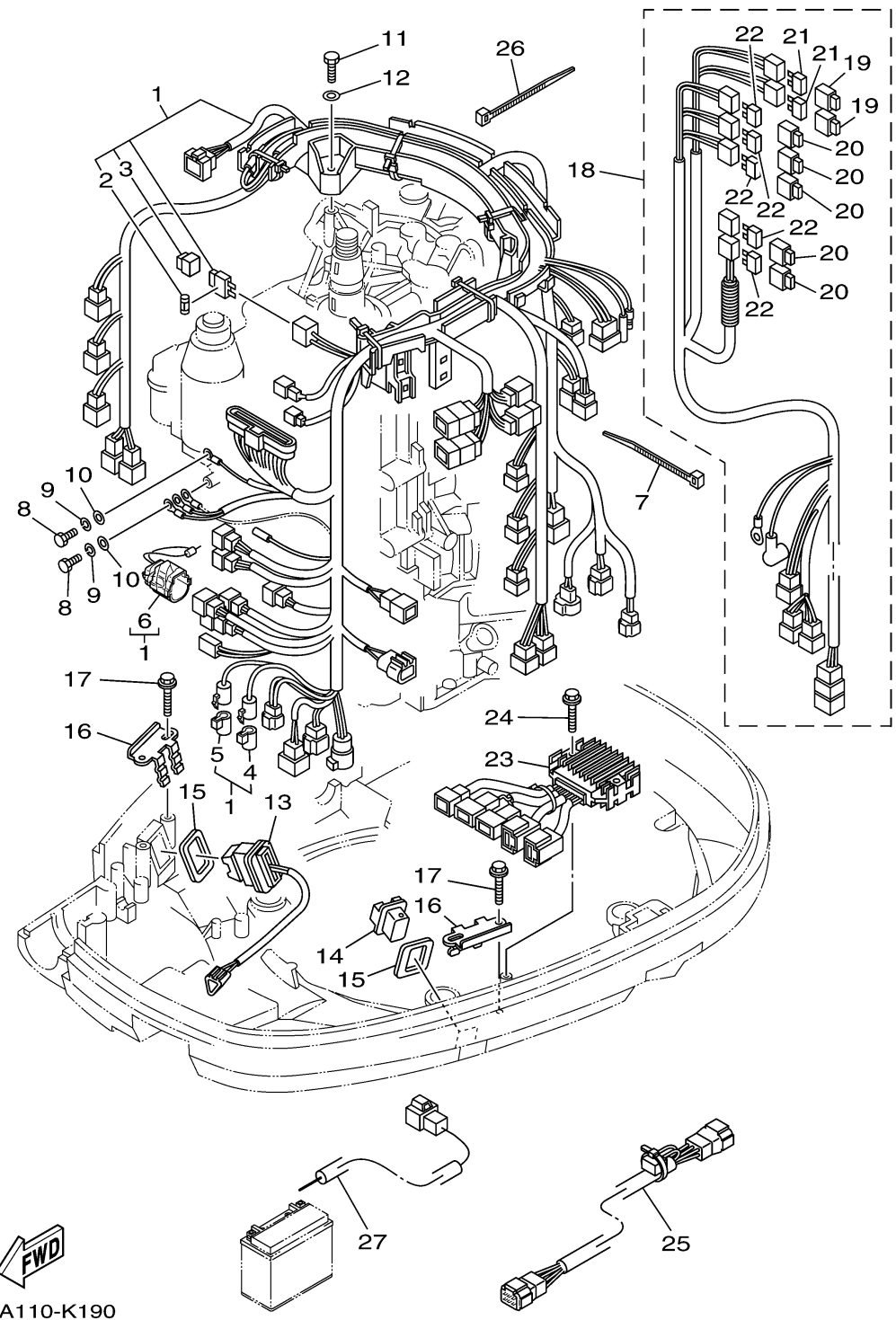


# ELECTRICAL 3

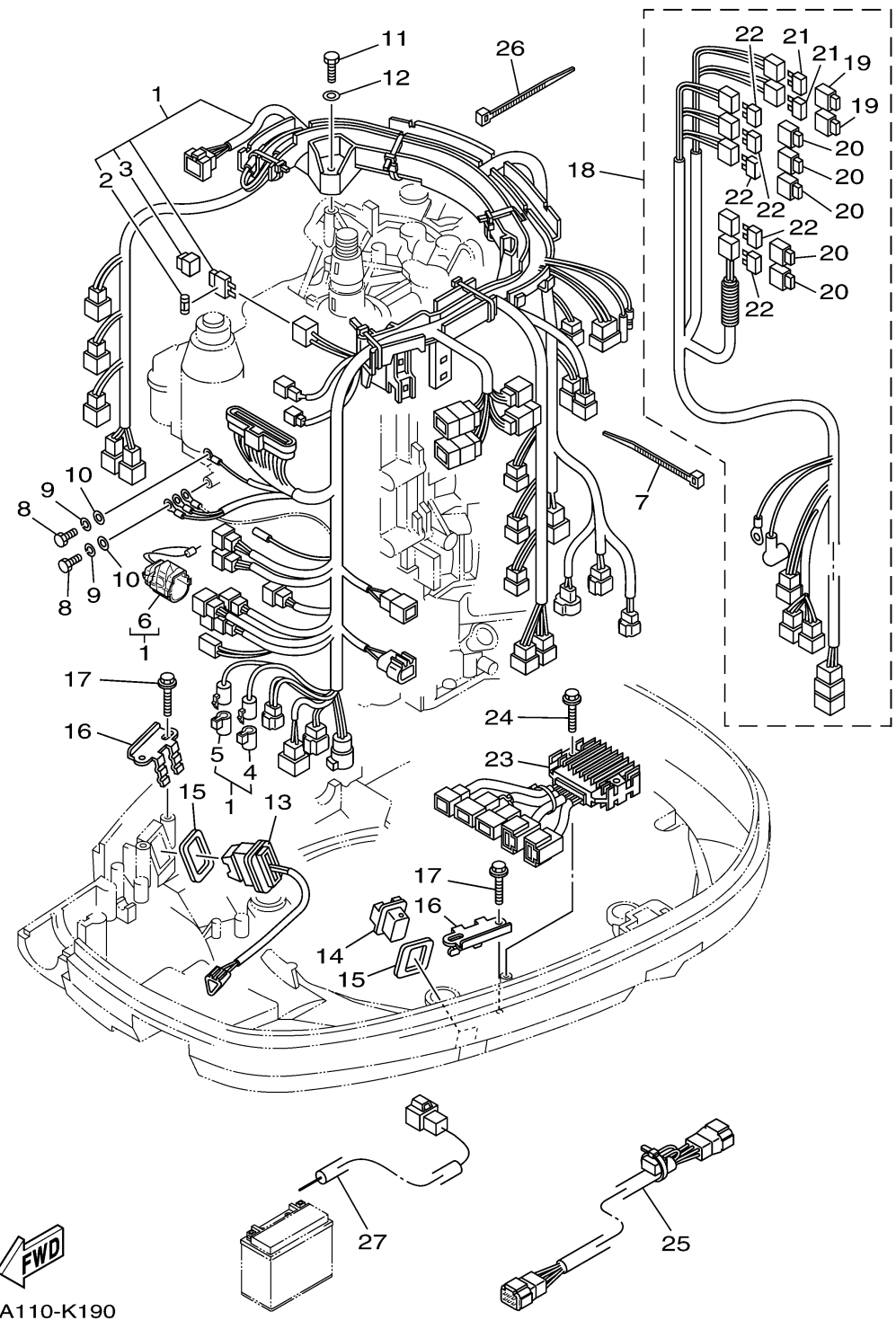


Ref No.	Part Number	Description	Qty	Remarks
1	69J-82590-70-00	WIRE HARNESS ASSY	1	
2	67F-82151-20-00	..FUSE (5A)	2	
3	69J-8215B-00-00	..CAP (BROWN)	1	
4	6P2-82582-00-00	..CAP 1 (FEMALE)	1	
5	6P2-82582-10-00	..CAP 1 (MALE)	1	
6	69J-82582-09-00	..CAP 1 (3P, FEMALE)	1	
7	90465-14M66-00	CLAMP	1	
8	97095-06020-00	BOLT	2	
9	92995-06100-00	WASHER, SPRING	2	
10	92995-06600-00	WASHER	2	
11	97095-06035-00	BOLT	3	
12	92995-06600-00	WASHER	3	
13	69J-82563-00-00	TRIM & TILT SWITCH ASSY	1	
14	69J-42723-00-8D	COVER, BOTTOM	1	
15	69J-82587-00-00	GASKET	2	
16	69J-83614-10-00	BRACKET	2	
17	90109-06M86-00	BOLT	4	
18	69J-8259N-11-00	WIRE HARNESS ASSY 3	1	
19	67F-8215B-10-00	..CAP (YELLOW)	2	
20	67F-8215B-20-00	..CAP (GREEN)	5	

CONTINUED ON NEXT FRAME >

60LA110-K190

# ELECTRICAL 3



Ref No.	Part Number	Description	Qty	Remarks
21	67F-82151-00-00	. .FUSE (20A)	4	
22	67F-82151-10-00	. .FUSE (30A)	10	
23	69J-83306-01-00	DRIVE UNIT ASSY	1	
24	90109-06M82-00	BOLT	2	
25	69J-81315-00-00	LEAD WIRE ASSY	1	
26	90465-14M66-00	CLAMP	1	
27	69J-81949-02-00	WIRE, LEAD (ISOLATOR, 3.8M )	1	AP

  
 60LA110-K190