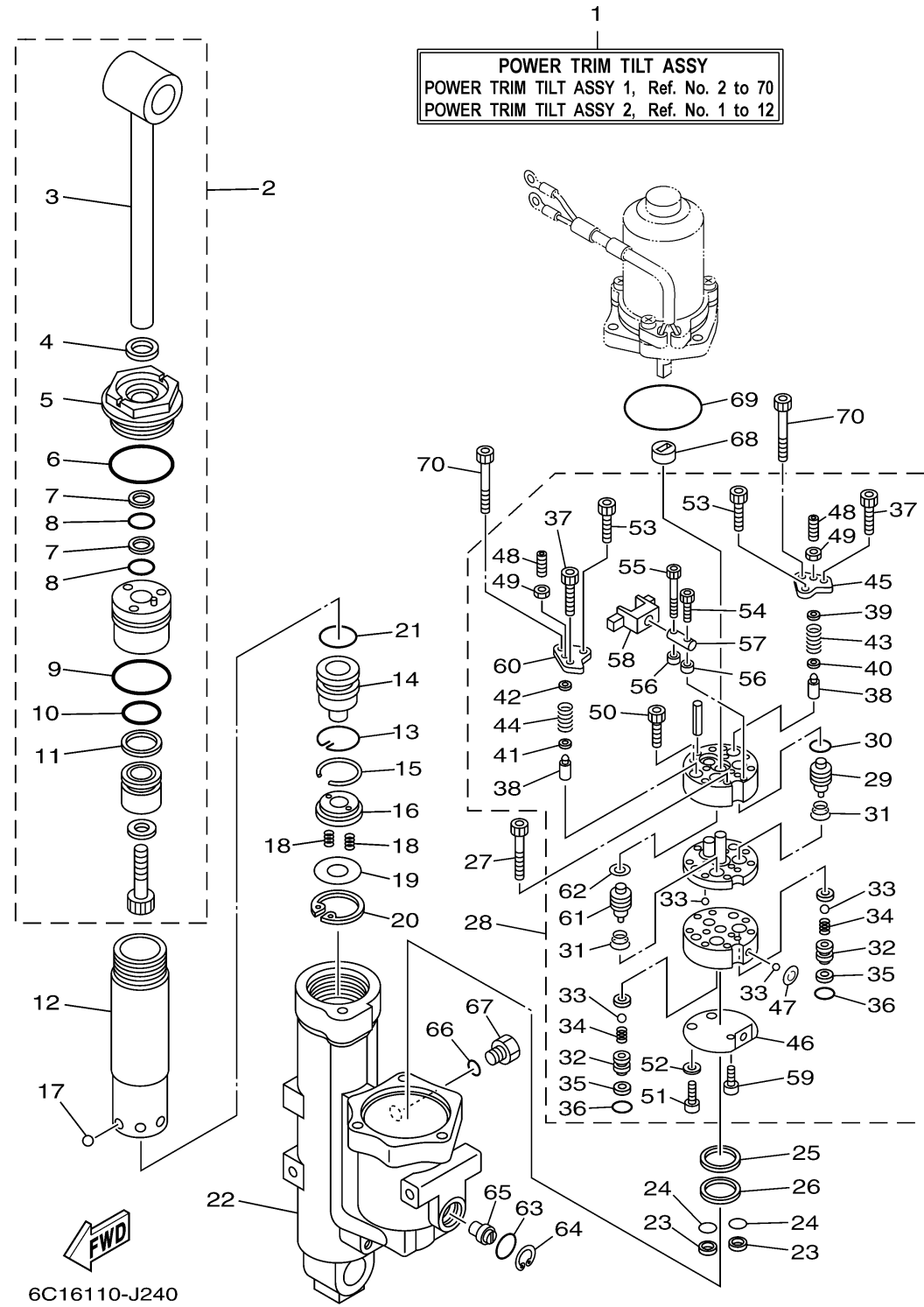


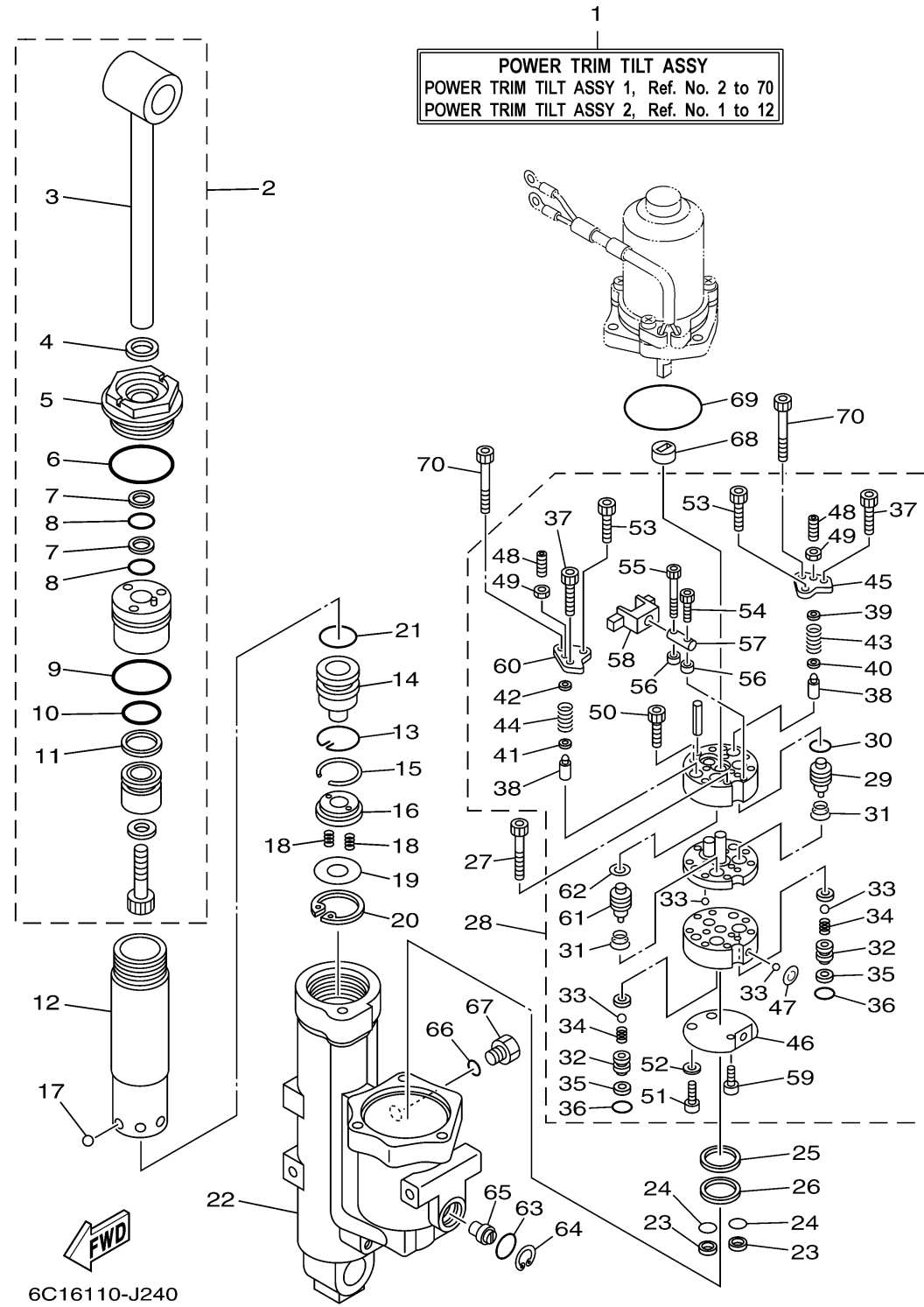
POWER TRIM TILT ASSY 1



Ref No.	Part Number	Description	Qty	Remarks
1	6C5-43800-01-8D	POWER TRIM & TILT ASSY	1	
2	6C5-43810-00-00	TILT PISTON SUB ASSY	1	
3	6C5-43801-00-00	. .ROD	1	
4	62Y-43822-00-00	. .SEAL, TRIM DUST	1	
5	6C5-43821-00-00	. .SCREW, TRIM CYLINDER END	1	
6	62Y-43863-00-00	. .O-RING	1	
7	62X-43872-00-00	. .RING, BACK UP	2	
8	6C5-43863-00-00	. .O-RING	2	
9	6C5-43862-00-00	. .O-RING	1	
10	6C5-43861-00-00	. O-RING	1	
11	6C5-43871-00-00	. .RING, BACK UP	1	
12	6C5-22471-00-00	CYLINDER, SHOCK ABSORBER	1	
13	6C5-43875-00-00	RING, SNAP	1	
14	6C5-4381B-00-00	FREE PISTON SUB ASSY	1	
15	93450-32116-00	CIRCLIP	1	
16	6C5-43899-00-00	PLATE STOPPER	1	
17	93503-16003-00	BALL	6	
18	62X-4384H-00-00	SPRING	2	
19	6C5-22435-00-00	PLATE, VALVE 2	1	
20	99009-32500-00	CIRCLIP	1	

CONTINUED ON NEXT FRAME >

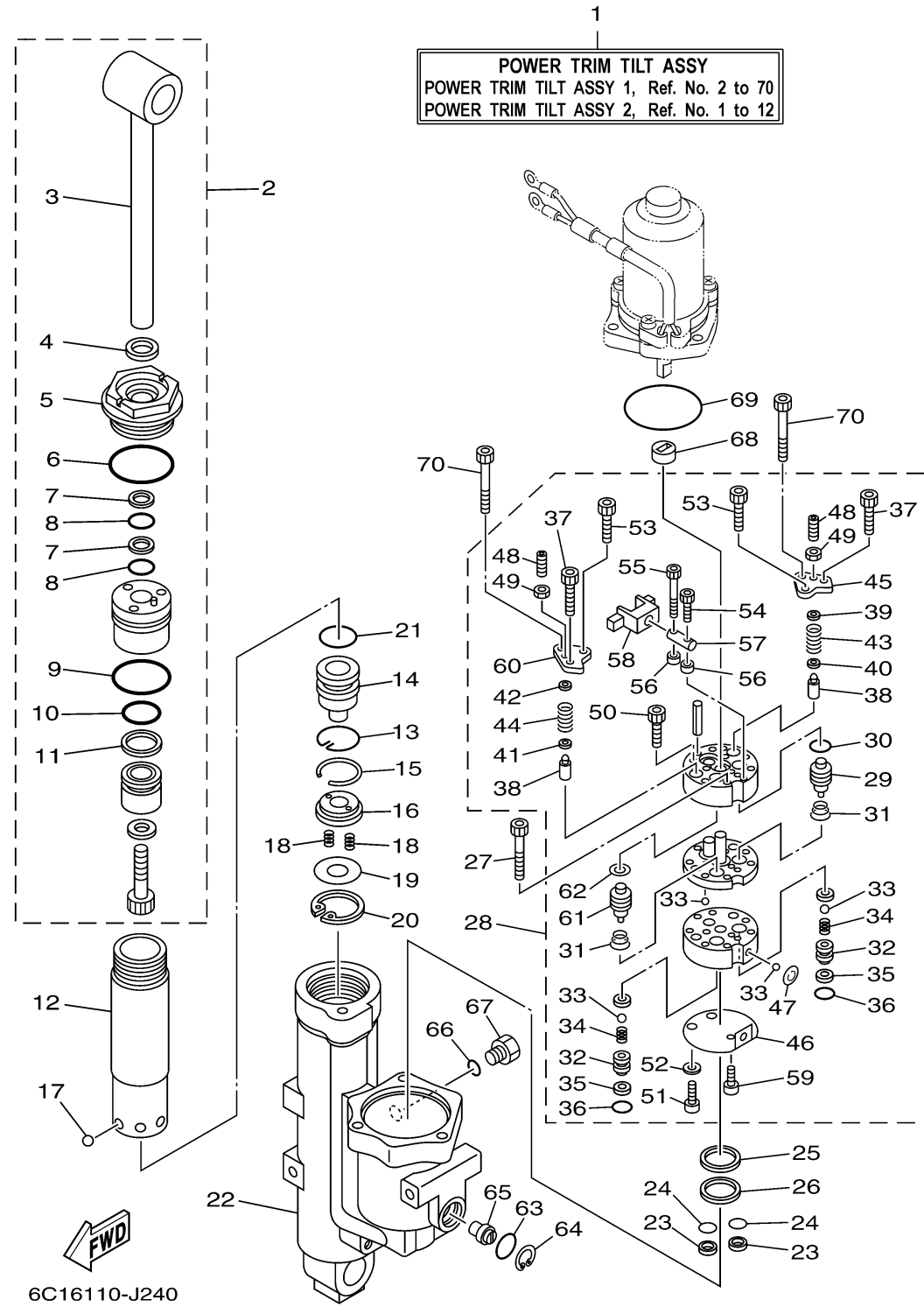
POWER TRIM TILT ASSY 1



Ref No.	Part Number	Description	Qty	Remarks
41	6C6-43893-00-00	..WASHER	1	
42	6C6-4381K-00-00	..HOLDER	1	
43	6C5-43855-00-00	..SPRING, UP RELIEF	1	
44	6C5-43856-00-00	..SPRING, DOWN RELIEF	1	
45	6C5-4382K-00-00	..CAP, RELIEF VALVE	1	
46	6C5-43895-00-00	..SEAT, RELIEF VALVE	1	
47	6C5-43854-00-00	..SPRING, MANUAL RELEASE	1	
48	92A08-03110-00	..SCREW SET	2	
49	95302-03600-00	..NUT	2	
50	91312-05025-00	..BOLT	2	
51	6C6-43878-00-00	..BOLT, SOCKET	2	
52	62Y-4387G-00-00	..WASHER	2	
53	91312-04030-00	..BOLT	2	
54	91312-03016-00	..BOLT	1	
55	6C6-4388E-00-00	..PLUG, TAPER SCREW	1	
56	6C6-4388F-00-00	..SPACER	2	
57	6C6-4386G-00-00	..PIN, STRAIGHT 2	1	
58	6C6-4386E-00-00	..LEVER 1	1	
59	91312-03005-00	..BOLT	1	
60	6C5-4382L-00-00	..CAP, RELIEF VALVE	1	

CONTINUED ON NEXT FRAME >

POWER TRIM TILT ASSY 1



Ref No.	Part Number	Description	Qty	Remarks
61	6C5-43841-00-00	.PISTON, SHUTTLE	1	
62	6C5-43872-00-00	.RING, BACK UP	1	
63	93210-18397-00	O-RING	1	
64	6H1-43875-00-00	RING, SNAP	1	
65	6C5-43845-00-00	SCREW, MANUAL RELEASE	1	
66	93210-09165-00	O-RING	1	
67	6H1-43829-00-00	PLUG, RESERVOIR	1	
68	6C5-43831-00-00	CONNECTOR, SHAFT	1	
69	93210-64488-00	.O-RING	1	
70	91312-05050-00	BOLT	2	