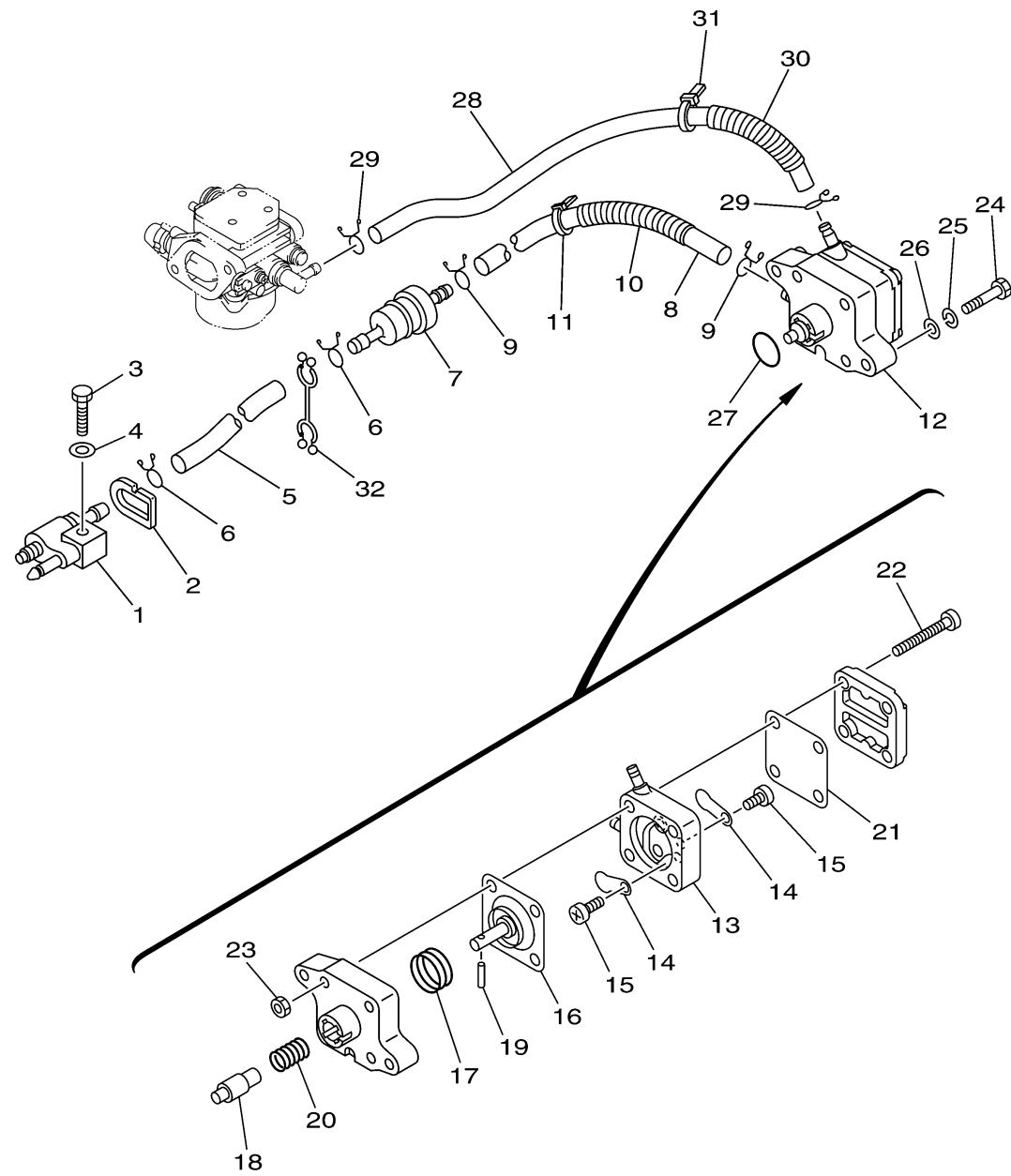


60N4010-G090

FUEL 1

Ref No.	Part Number	Description	Qty	Remarks
1	6G1-24304-02-00	FUEL PIPE JOINT COMP. 1	1	
2	60R-F4329-00-00	SEAL	1	
3	97095-06025-00	.BOLT	1	
4	92995-06600-00	WASHER	1	
5	90445-10809-00	HOSE (L295)	1	
6	90467-09M09-00	CLIP	2	
7	68T-24251-01-00	STRAINER 1	1	
8	90445-10811-00	HOSE (L170)	1	
9	90467-09M09-00	CLIP	2	
10	90446-14M66-00	HOSE (L40)	1	
11	90465-11M10-00	CLAMP	1	
12	68T-24410-01-00	FUEL PUMP ASSY	1	
13	66M-24413-01-00	..BODY 2	1	
14	6A0-24421-01-00	..VALVE, CHECK	2	
15	6E7-14325-00-00	..SCREW, PAN HEAD	2	
16	66M-24411-01-00	..DIAPHRAGM	1	
17	66M-24423-00-00	..SPRING, DIAPHRAGM	1	
18	66M-13131-00-00	..PLUNGER	1	
19	66M-24374-00-00	..PIN	1	
20	66M-24454-00-00	..SPRING	1	

CONTINUED ON NEXT FRAME >



60N4010-G090

FUEL 1

Ref No.	Part Number	Description	Qty	Remarks
21	66M-24471-01-00	.DIAPHRAGM	1	
22	66M-24444-00-00	.SCREW	4	
23	95380-04600-00	.NUT	4	
24	97095-06030-00	BOLT	2	
25	92995-06100-00	WASHER, SPRING	2	
26	92995-06600-00	WASHER	2	
27	93210-20M65-00	.O-RING	1	
28	90445-10810-00	HOSE (L280)	1	
29	90467-09M09-00	CLIP	2	
30	90446-14M66-00	HOSE (L40)	1	
31	90465-11M10-00	CLAMP	1	
32	90464-10M53-00	CLAMP	1	