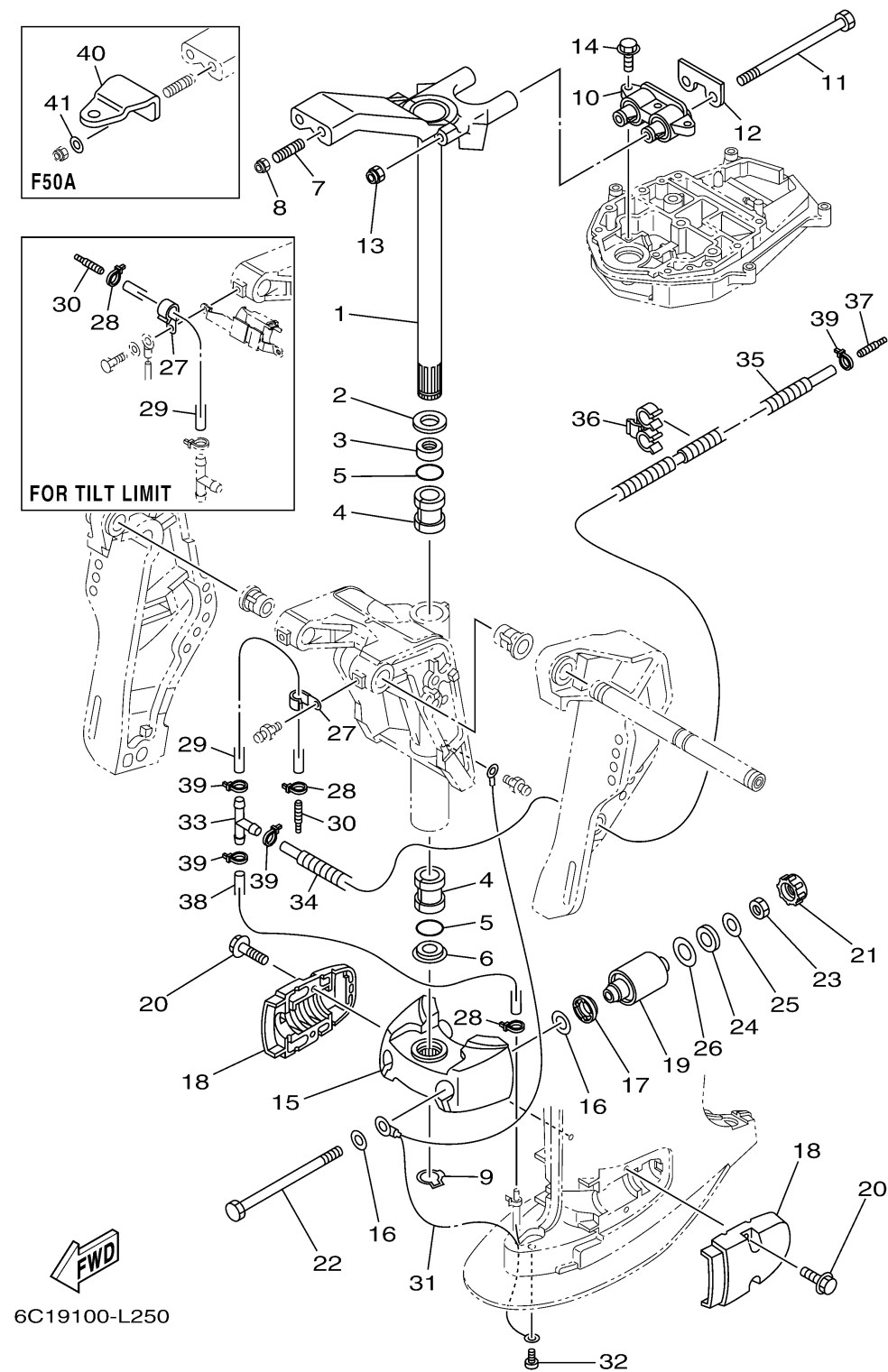


BRACKET 2

Ref No.	Part Number	Description	Qty	Remarks
1	69W-42510-01-8D	STEERING BRACKET ASSY	1	
2	90201-30M00-00	WASHER, PLATE	1	
3	90386-30M78-00	BUSH	1	
4	90386-30M77-00	BUSH	2	
5	93210-29M94-00	O-RING	2	
6	90386-30M60-00	BUSH	1	
7	90116-10038-00	BOLT, STUD	2	
8	90185-10051-00	NUT, SELF-LOCKING	2	
9	93410-28M06-00	CIRCLIP	1	
10	69W-44514-00-94	MOUNT DAMPER, UPPER SIDE	1	L(20.7")
11	90101-08M15-00	BOLT	2	
12	69W-44526-01-00	PLATE	1	
13	90185-08045-00	NUT, SELF-LOCKING	2	
14	97575-08530-00	BOLT, WITH WASHER	3	
15	6C5-44551-00-8D	HOUSING, LOWER MOUNT RUBBER 1	1	
16	90201-12M16-00	WASHER, PLATE	4	
17	6C5-43885-00-00	GROMMET	2	
18	6C5-44552-00-8D	HOUSING, LOWER MOUNT RUBBER 2	2	
19	69W-44555-00-94	MOUNT DAMPER, LOWER SIDE	2	
20	90119-08131-00	BOLT, WITH WASHER	4	

CONTINUED ON NEXT FRAME >

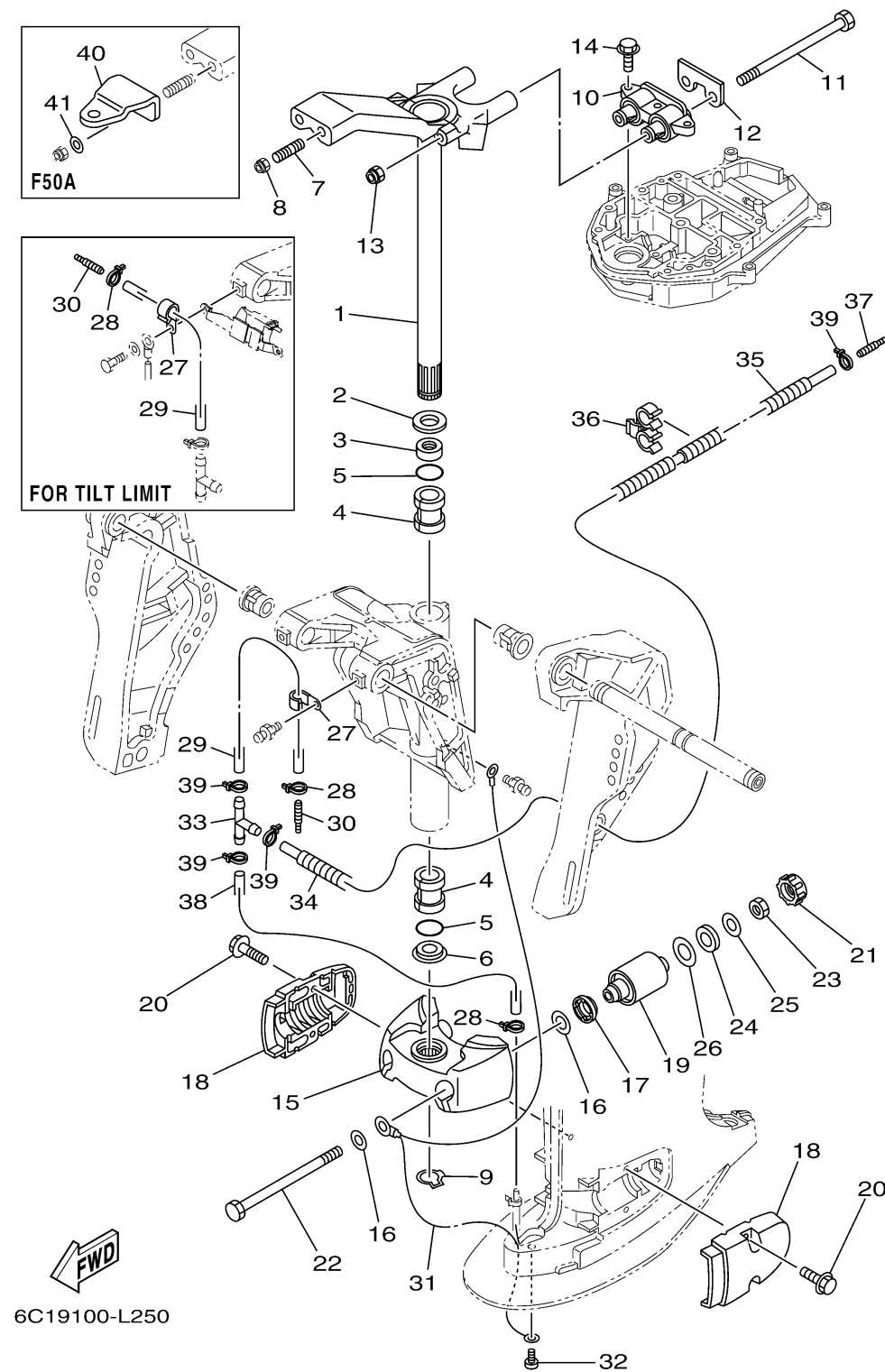


BRACKET 2

Ref No.	Part Number	Description	Qty	Remarks
21	6C5-44575-00-00	DAMPER, LOWER MOUNT RUBBER	2	
22	90109-12MA3-00	BOLT	2	
23	95380-12700-00	NUT	2	
24	90202-21100-00	WASHER, PLATE	2	
25	90201-13M19-00	WASHER, PLATE	2	
26	90201-22M05-00	WASHER, PLATE	2	
27	90465-06M86-00	CLAMP	1	
28	90465-11M10-00	CLAMP	2	
29	90445-07MF2-00	HOSE (L250)	1	
30	6E5-83558-00-00	END, NIPPLE	1	
31	67C-82127-10-00	WIRE, LEAD 2	1	
32	97885-06008-00	SCREW, PAN HEAD	1	
33	90413-05014-00	WAY 3	1	
34	6C5-44385-01-00	HOSE, WATER 1	1	
35	90447-07001-00	HOSE, WITH SPRING (L400)	1	
36	90464-10006-00	CLAMP	1	
37	6E5-83558-00-00	END, NIPPLE	1	
38	90445-07M30-00	HOSE (L450)	1	
39	90465-11M10-00	CLAMP	4	
40	65W-48511-01-00	HOOK, STEERING	1	

CONTINUED ON NEXT FRAME >

BRACKET 2



Ref No.	Part Number	Description	Qty	Remarks
41	90201-10120-00	. WASHER, PLATE	2	