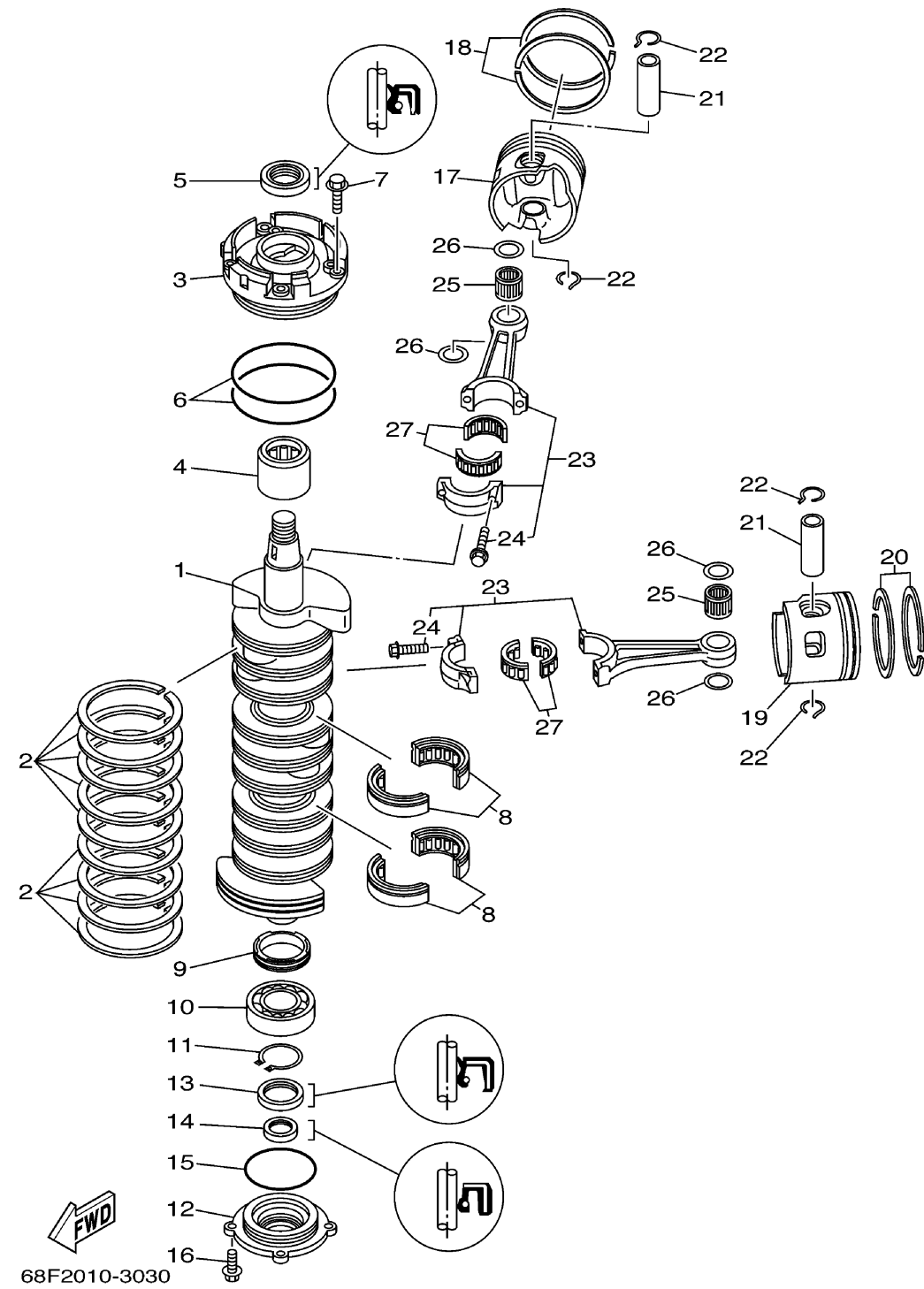


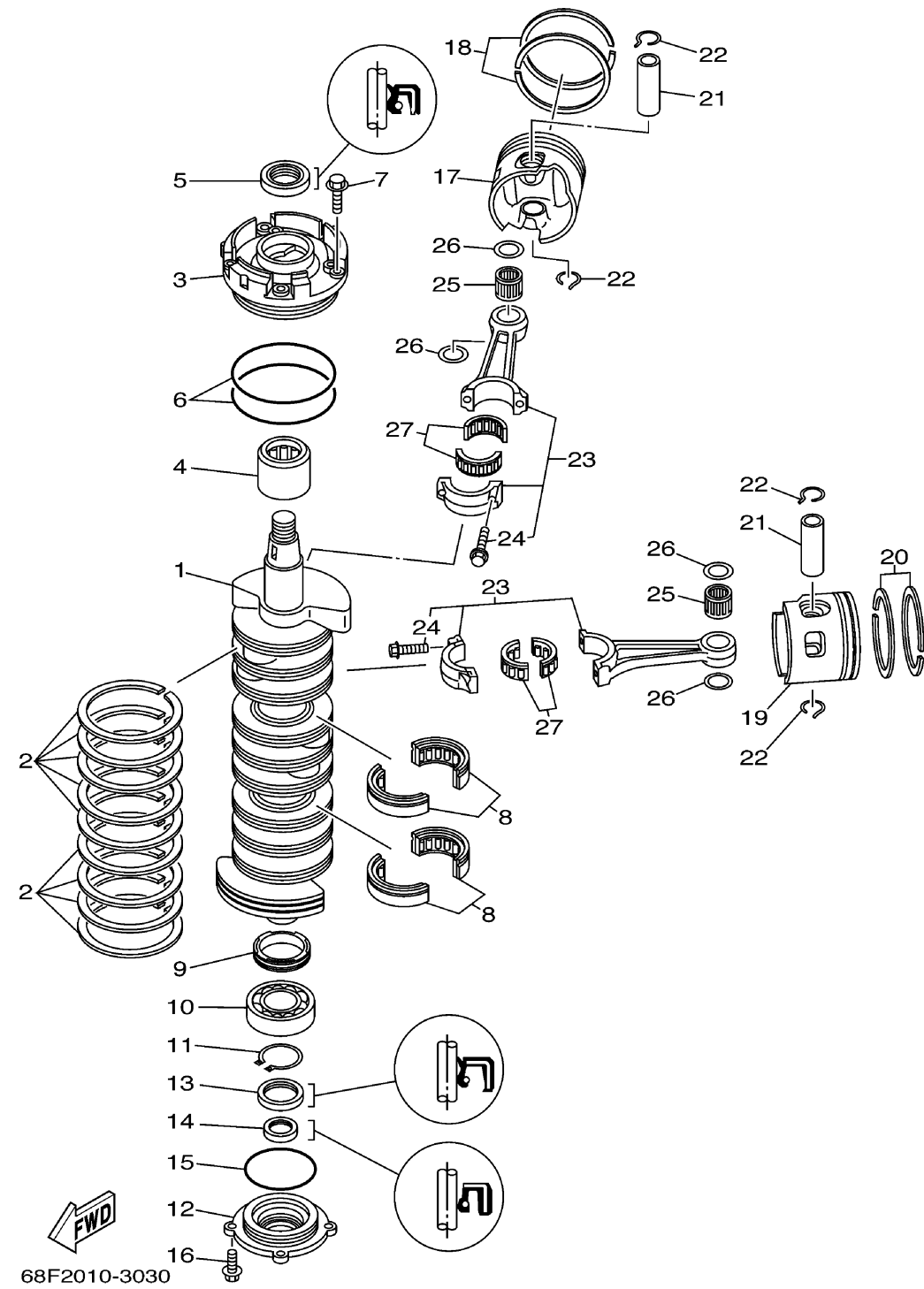
CRANKSHAFT PISTON



| Ref No. | Part Number | Description | Qty | Remarks |
|---------|-----------------|-----------------------|-----|---------|
| 1 | 68F-11411-01-00 | CRANKSHAFT | 1 | |
| 2 | 6E5-11447-00-00 | SEAL, CRANK | 9 | |
| 3 | 68F-15163-00-1S | HOUSING, BEARING 1 | 1 | |
| 4 | 93311-940U3-00 | BEARING | 1 | |
| 5 | 93102-40M14-00 | .OIL SEAL | 1 | |
| 6 | 93211-04001-00 | .O-RING | 2 | |
| 7 | 90119-06MA3-00 | BOLT, WITH WASHER | 4 | |
| 8 | 93310-954U1-00 | BEARING | 2 | |
| 9 | 6R3-11536-00-00 | GEAR, DRIVE | 1 | |
| 10 | 93306-208U0-00 | BEARING | 1 | |
| 11 | 93410-40M03-00 | CIRCLIP | 1 | |
| 12 | 6G5-15359-00-94 | HOUSING, OIL SEAL | 1 | |
| 13 | 93102-35M61-00 | .OIL SEAL | 1 | |
| 14 | 93101-22M15-00 | .OIL SEAL | 1 | |
| 15 | 93210-74M35-00 | .O-RING | 1 | |
| 16 | 90119-06MA2-00 | BOLT, WITH WASHER | 4 | |
| 17 | 68F-11636-01-00 | PISTON (0.50MM O/S) | 3 | AP |
| 17 | 68F-11631-01-85 | PISTON (STD) | 3 | |
| 17 | 68F-11635-01-00 | PISTON (0.25MM O/S) | 3 | AP |
| 18 | 68F-11603-02-00 | PISTON RING SET (STD) | 3 | |

CONTINUED ON NEXT FRAME >

CRANKSHAFT PISTON



| Ref No. | Part Number | Description | Qty | Remarks |
|---------|-----------------|------------------------------|-----|---------|
| 18 | 68F-11604-02-00 | PISTON RING SET (0.25MM O/S) | 3 | AP |
| 18 | 68F-11605-02-00 | PISTON RING SET (0.50MM O/S) | 3 | AP |
| 19 | 68F-11646-01-00 | PISTON 2 (0.50MM O/S) | 3 | AP |
| 19 | 68F-11645-01-00 | PISTON 2 (0.25MM O/S) | 3 | AP |
| 19 | 68F-11642-01-85 | PISTON 2 (STD) | 3 | |
| 20 | 68F-11603-02-00 | PISTON RING SET (STD) | 3 | |
| 20 | 68F-11604-02-00 | PISTON RING SET (0.25MM O/S) | 3 | AP |
| 20 | 68F-11605-02-00 | PISTON RING SET (0.50MM O/S) | 3 | AP |
| 21 | 6R5-11633-10-00 | PIN, PISTON | 6 | |
| 22 | 6R5-11634-10-00 | CLIP, PISTON PIN | 12 | |
| 23 | 6R5-11650-10-00 | CONNECTING ROD ASSY | 6 | |
| 24 | 90109-08022-00 | . .BOLT | 2 | |
| 25 | 93310-32337-00 | BEARING | 6 | |
| 26 | 90201-23M01-00 | WASHER, PLATE | 12 | |
| 27 | 93310-836U0-00 | BEARING | 6 | |