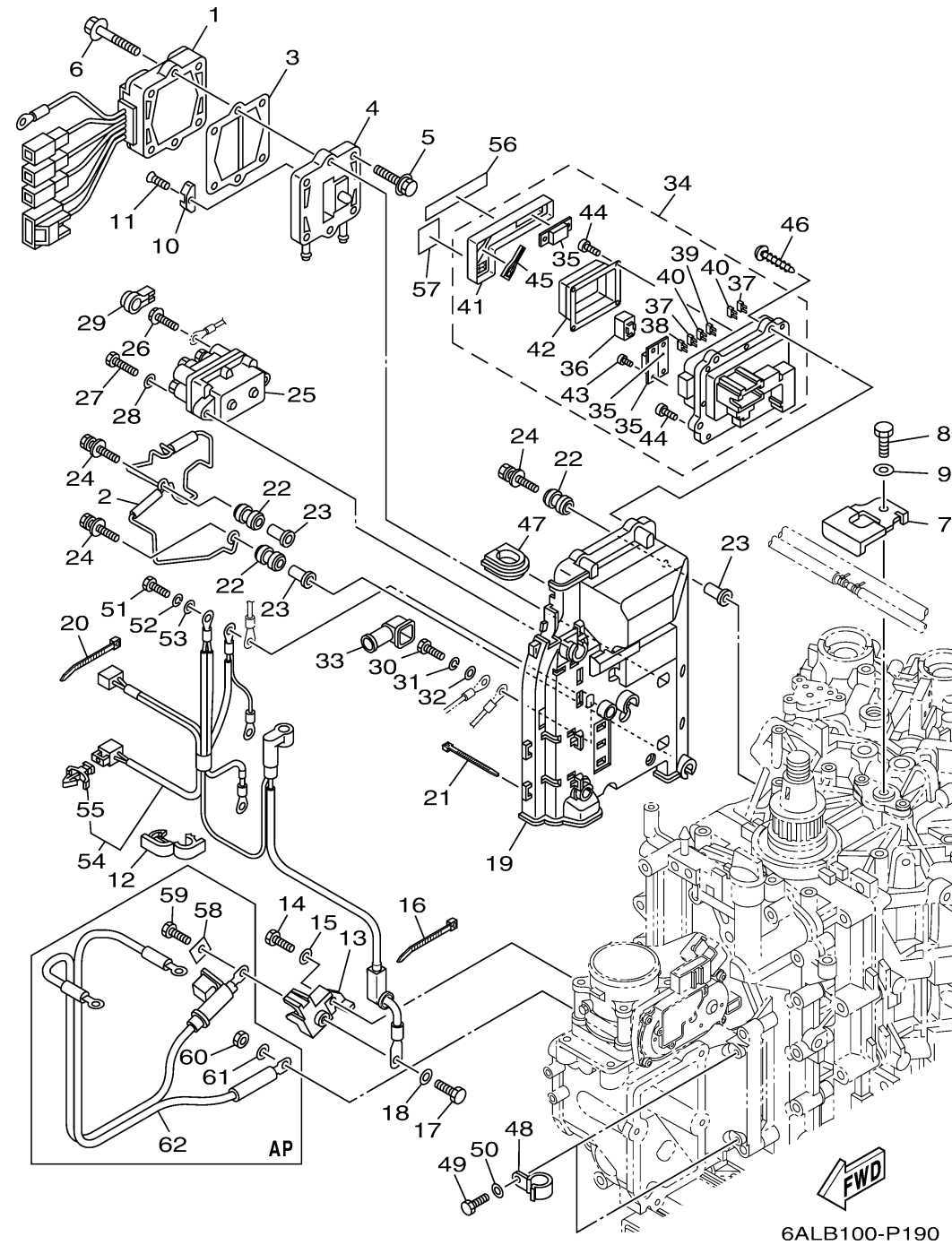


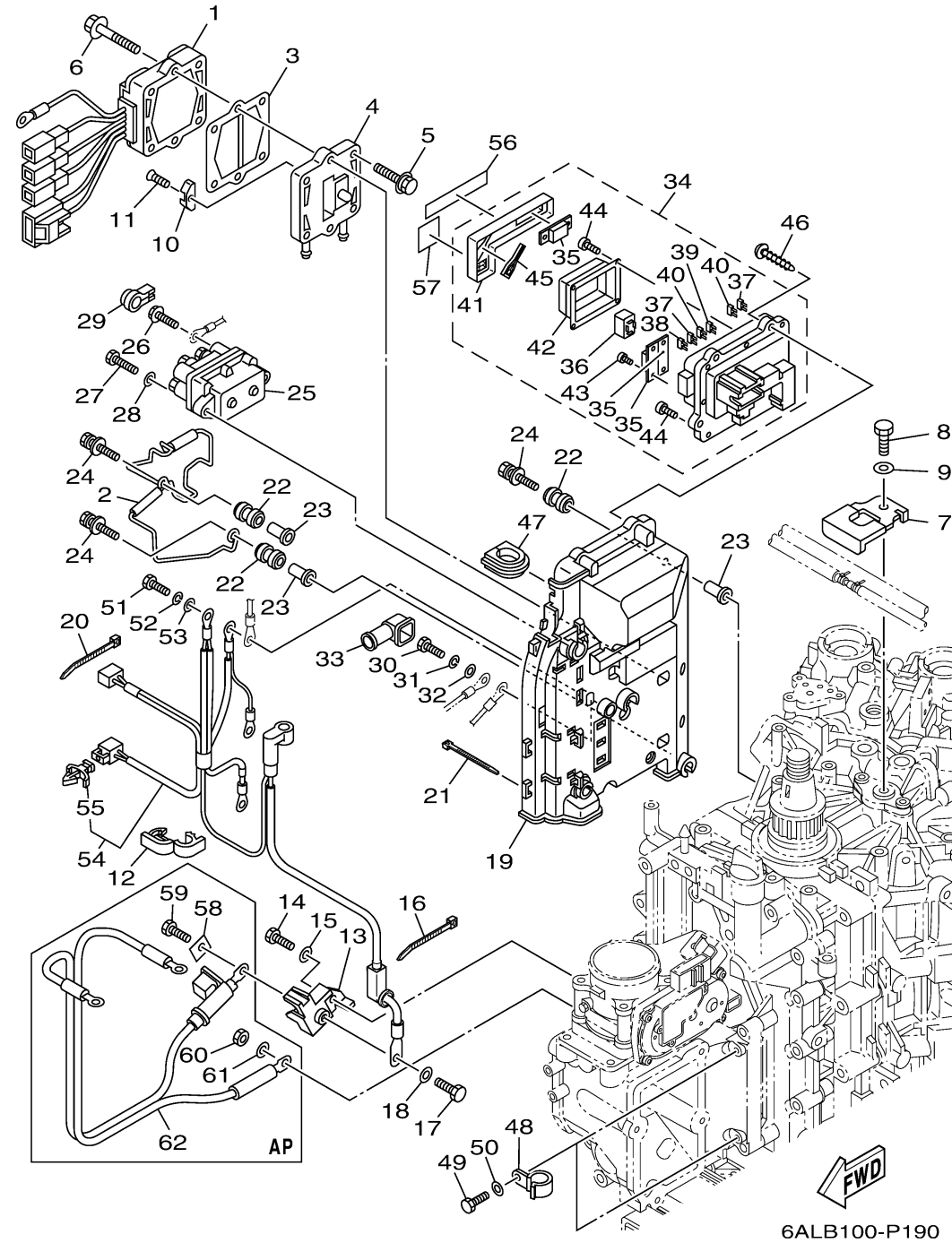
## ELECTRICAL 2



Ref No.	Part Number	Description	Qty	Remarks
1	6P2-81960-02-00	RECTIFIER & REGULATOR ASSY	1	
2	6P2-81614-00-00	PROTECTOR	1	
3	60V-81975-A0-00	PLATE, RECTIFIER FITTING	1	
4	6P2-81972-00-9S	COVER, RECTIFIER	1	
5	90119-06MA3-00	BOLT, WITH WASHER	4	
6	90119-06MA5-00	BOLT, WITH WASHER	2	
7	6P2-12491-00-00	CLAMP 1	1	
8	97095-06012-00	BOLT	1	
9	92995-06600-00	WASHER	1	
10	6E5-11325-00-00	ANODE	1	
11	98780-04015-00	SCREW, FLAT HEAD	1	
12	90464-18004-00	CLAMP	5	
13	6P2-81925-01-00	TERMINAL	1	
14	97095-08020-00	BOLT	1	
15	92995-08600-00	WASHER	1	
16	90465-13M18-00	CLAMP	1	
17	97095-08016-00	BOLT	1	
18	92995-08600-00	WASHER	1	
19	6P2-81948-00-00	BRACKET	1	
20	90465-13M18-00	CLAMP	6	

CONTINUED ON NEXT FRAME >

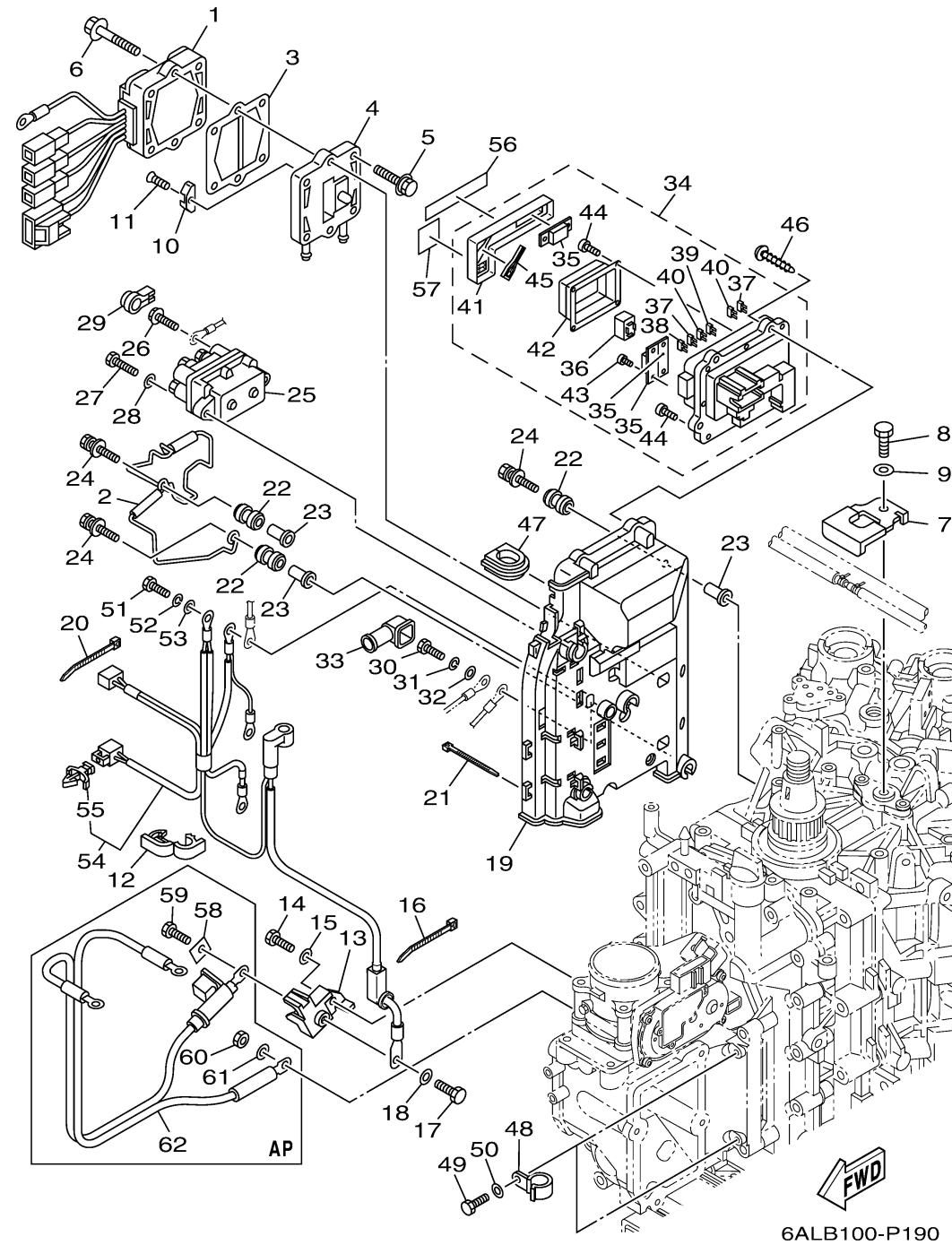
## ELECTRICAL 2



Ref No.	Part Number	Description	Qty	Remarks
21	90465-14M66-00	CLAMP	3	
22	6A0-82317-00-00	.DAMPER, IGNITION COIL	5	
23	90387-06119-00	.COLLAR	5	
24	90119-06M95-00	BOLT, WITH WASHER	5	
25	63P-81950-00-00	RELAY ASSY	1	
26	97595-06610-00	BOLT, WITH WASHER	2	
27	97013-06025-00	BOLT	2	
28	92903-06600-00	WASHER, PLATE	2	
29	6P2-8183X-00-00	CAP, TERMINAL	2	
30	97095-06016-00	BOLT	1	
31	92995-06100-00	WASHER, SPRING	1	
32	92995-06600-00	WASHER	1	
33	6P2-82119-00-00	COVER, LEAD WIRE	1	
34	6P2-82170-11-00	FUSE BOX ASSY	1	
35	6P2-82151-00-00	. .FUSE (60A)	3	
36	6AW-8195A-00-00	. .RELAY ASSY	4	
37	67F-82151-40-00	. .FUSE (10A)	3	
38	67F-82151-50-00	. .FUSE (15A)	2	
39	67F-82151-00-00	. .FUSE (20A)	2	
40	67F-82151-10-00	. .FUSE (30A)	3	

CONTINUED ON NEXT FRAME >

## ELECTRICAL 2



Ref No.	Part Number	Description	Qty	Remarks
41	6P2-85544-00-00	. .CASE	1	
42	6P2-81639-10-00	. .COVER	1	
43	68F-82846-00-00	. .SCREW, PAN HEAD (M5)	4	
44	6P2-82113-00-00	. .SCREW	12	
45	67F-2812A-00-00	. .PULLER, FUSE	1	
46	97780-50620-00	SCREW, TAPPING	4	
47	6P2-81336-00-00	GROMMET	1	
48	90462-08026-00	CLAMP	2	
49	97095-06016-00	BOLT	2	
50	92995-06600-00	WASHER	2	
51	97095-06016-00	BOLT	3	
52	92995-06100-00	WASHER, SPRING	3	
53	92995-06600-00	WASHER	3	
54	6P2-8259M-00-00	WIRE HARNESS ASSY 2	1	
55	90464-09M47-00	. .CLAMP	1	
56	6P2-81919-40-00	GRAPHIC, REGULATOR	1	
57	6P2-81919-31-00	GRAPHIC, REGULATOR	1	
58	6P2-81923-00-00	WASHER	1	AP
59	97095-08016-00	BOLT	1	AP
60	95333-08600-00	NUT	1	AP

CONTINUED ON NEXT FRAME >

## ELECTRICAL 2

Ref No.	Part Number	Description	Qty	Remarks
61	92903-08100-00	WASHER, SPRING	1	AP
62	6P2-82105-02-00	BATTERY CABLE	1	AP

