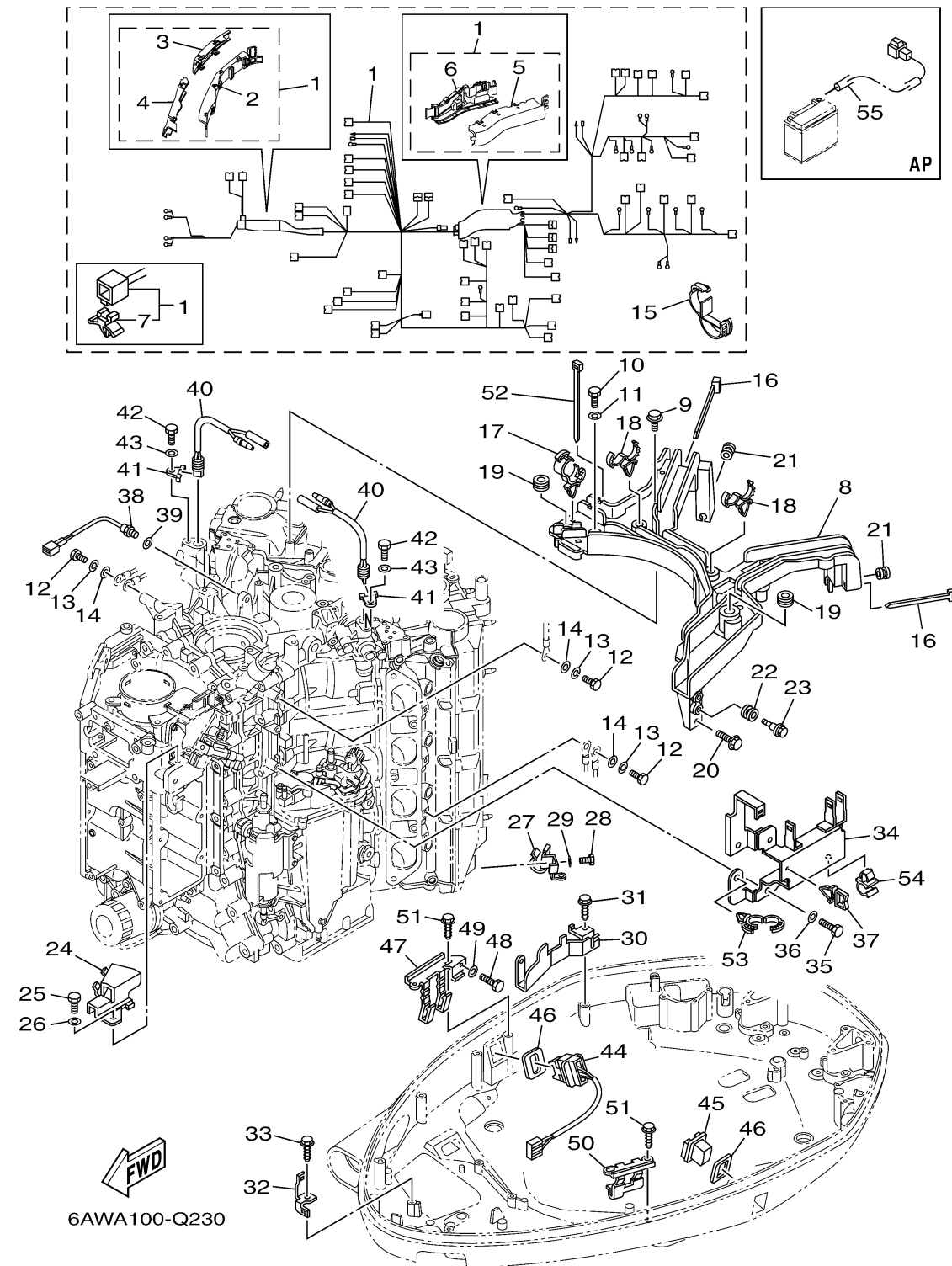


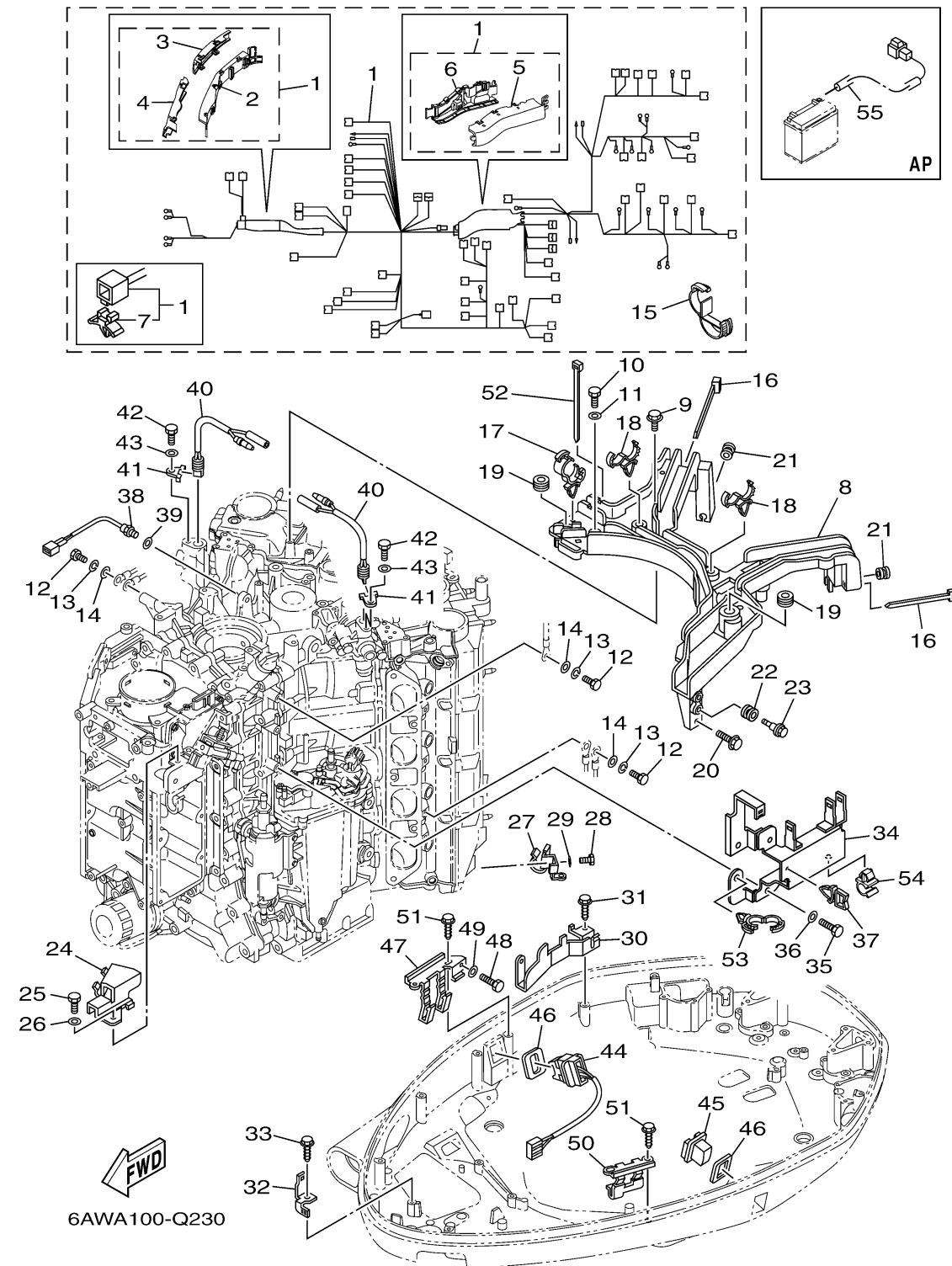
# ELECTRICAL 5



Ref No.	Part Number	Description	Qty	Remarks
1	6AW-82590-31-00	WIRE HARNESS ASSY	1	
2	6AW-8A7A1-00-00	..PROTECTOR 1	1	
3	6AW-8A7A2-00-00	..PROTECTOR 2	1	
4	6AW-8A7A3-00-00	..PROTECTOR 3	1	
5	6AW-8A7A4-00-00	..PROTECTOR 4	1	
6	6AW-8A7A5-00-00	..PROTECTOR 5	1	
7	90464-09M47-00	..CLAMP	2	
8	6AW-82589-01-00	PROTECTOR, WIRE HARNESS	1	
9	97595-06535-00	..BOLT, WITH WASHER	2	
10	97095-06025-00	BOLT	1	
11	92995-06600-00	WASHER	1	
12	97095-06016-00	BOLT	3	
13	92995-06100-00	WASHER, SPRING	3	
14	92995-06600-00	WASHER	3	
15	90464-25005-00	CLAMP	1	
16	90465-13M18-00	CLAMP	2	
17	90464-20181-00	CLAMP	1	
18	90464-18246-00	CLAMP	2	
19	90480-19368-00	GROMMET	2	
20	97595-06512-00	BOLT, WITH WASHER	1	

CONTINUED ON NEXT FRAME >

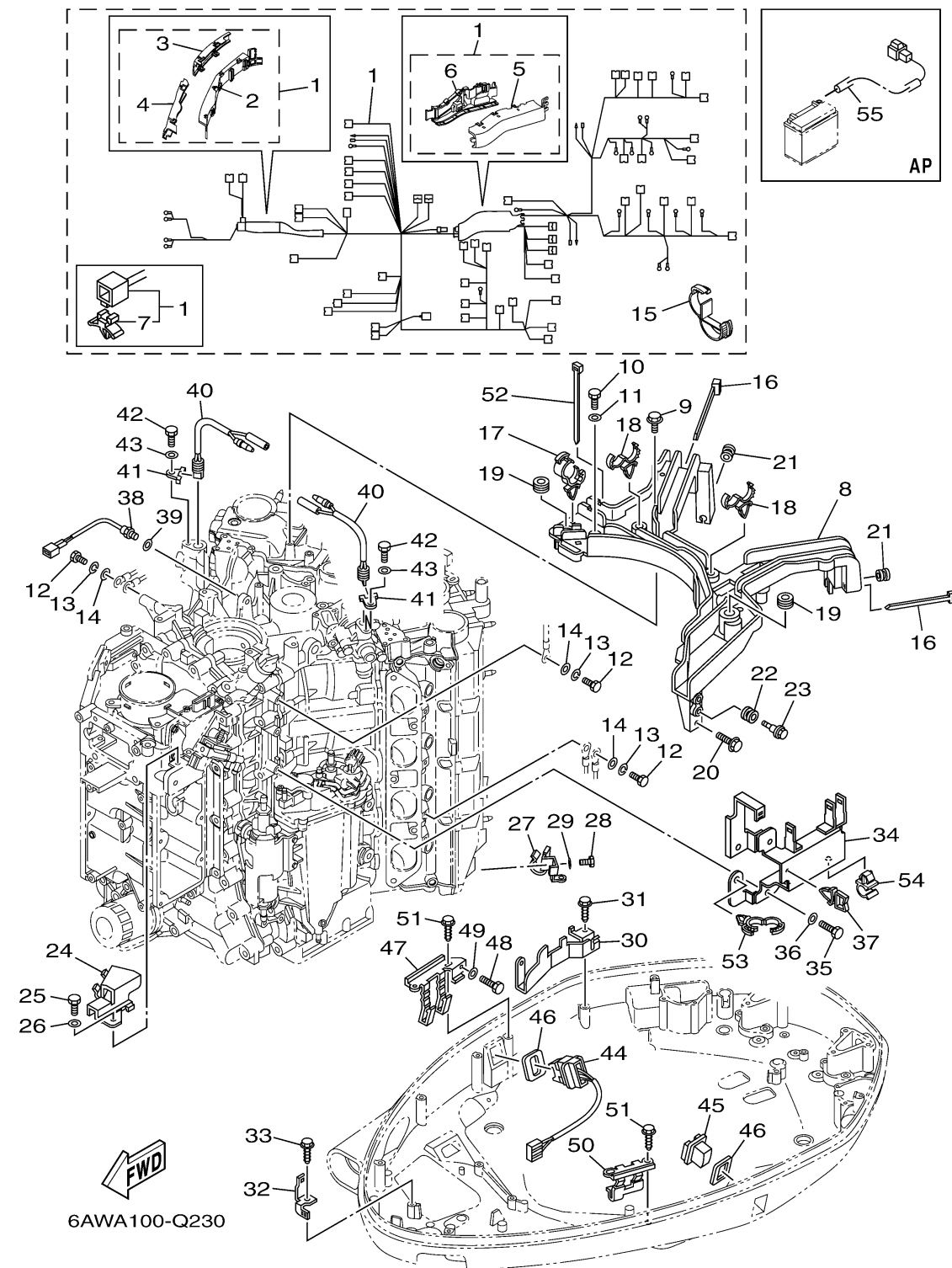
# ELECTRICAL 5



Ref No.	Part Number	Description	Qty	Remarks
21	90480-12314-00	GROMMET	2	
22	90480-12314-00	GROMMET	2	
23	90109-06MA1-00	BOLT	2	
24	6AW-82388-00-00	PLATE	1	
25	97095-06014-00	BOLT	1	
26	92995-06600-00	WASHER	1	
27	6AW-81677-00-00	CLAMP 1	1	
28	97095-06014-00	BOLT	1	
29	92995-06600-00	WASHER	1	
30	6AW-8257G-00-00	CLAMP, CORD	1	
31	90109-06M86-00	BOLT	1	
32	6AW-42743-00-00	BRACKET	1	
33	90109-06M86-00	BOLT	1	
34	6AW-81845-10-00	PLATE	1	
35	97095-06014-00	BOLT	2	
36	92995-06600-00	WASHER	2	
37	90464-11121-00	CLAMP	1	
38	61A-85790-00-00	THERMOSENSOR ASSY	1	
39	92990-10600-00	WASHER, PLATE	1	
40	6AW-82560-00-00	THERMO SWITCH ASSY	2	

CONTINUED ON NEXT FRAME >

# ELECTRICAL 5



Ref No.	Part Number	Description	Qty	Remarks
41	6E9-82588-00-00	PLATE	2	
42	97095-06016-00	BOLT	2	
43	92995-06600-00	WASHER	2	
44	6AW-82563-01-00	TRIM & TILT SWITCH ASSY	1	
45	69J-42723-01-00	COVER, BOTTOM	1	
46	69J-82587-00-00	GASKET	2	
47	6AX-83614-00-00	BRACKET	1	
48	97095-06014-00	BOLT	1	
49	92995-06600-00	WASHER	1	
50	63P-83614-01-00	BRACKET	1	
51	90109-06M86-00	BOLT	4	
52	90465-14M66-00	CLAMP	1	
53	90464-20181-00	CLAMP	2	
54	90464-08051-00	CLAMP	2	
55	69J-81949-02-00	WIRE, LEAD (ISOLATOR, 3.8M )	1	AP