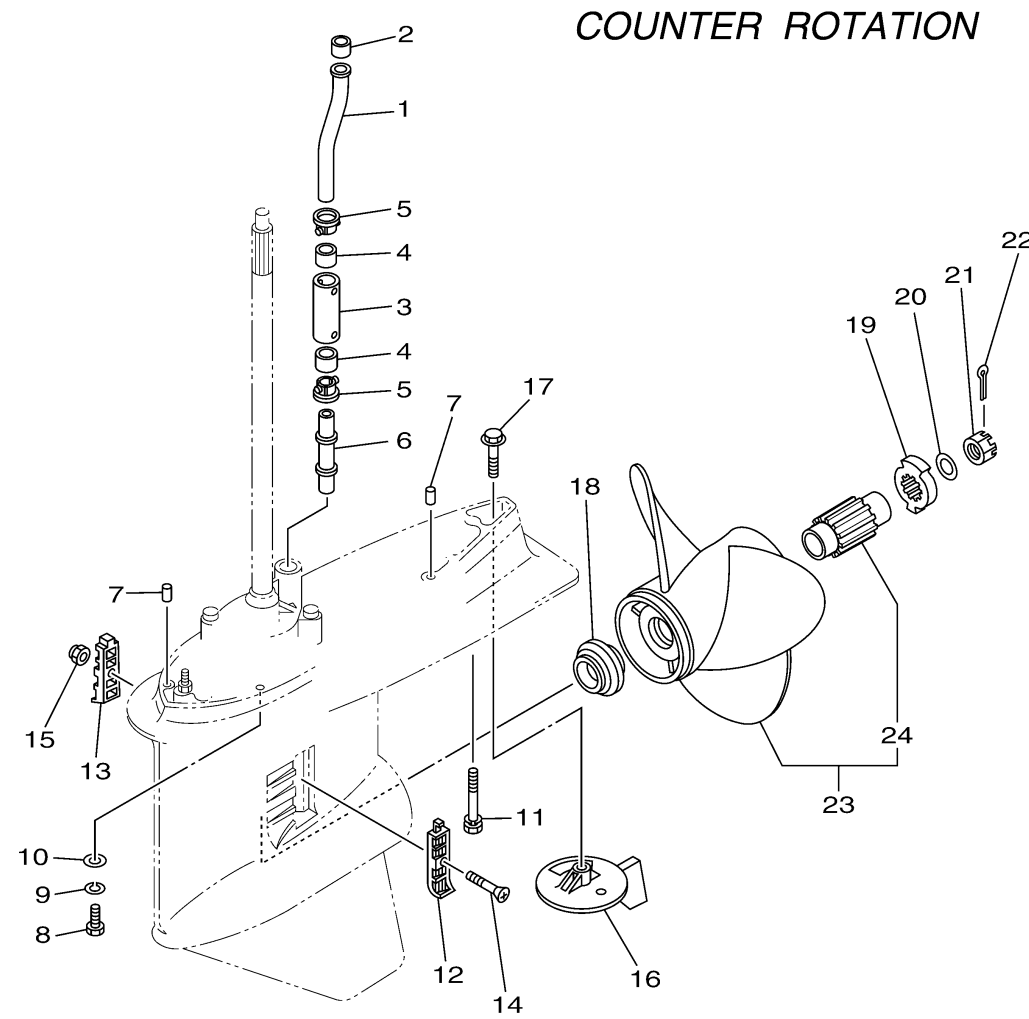


LOWER CASING DRIVE 4



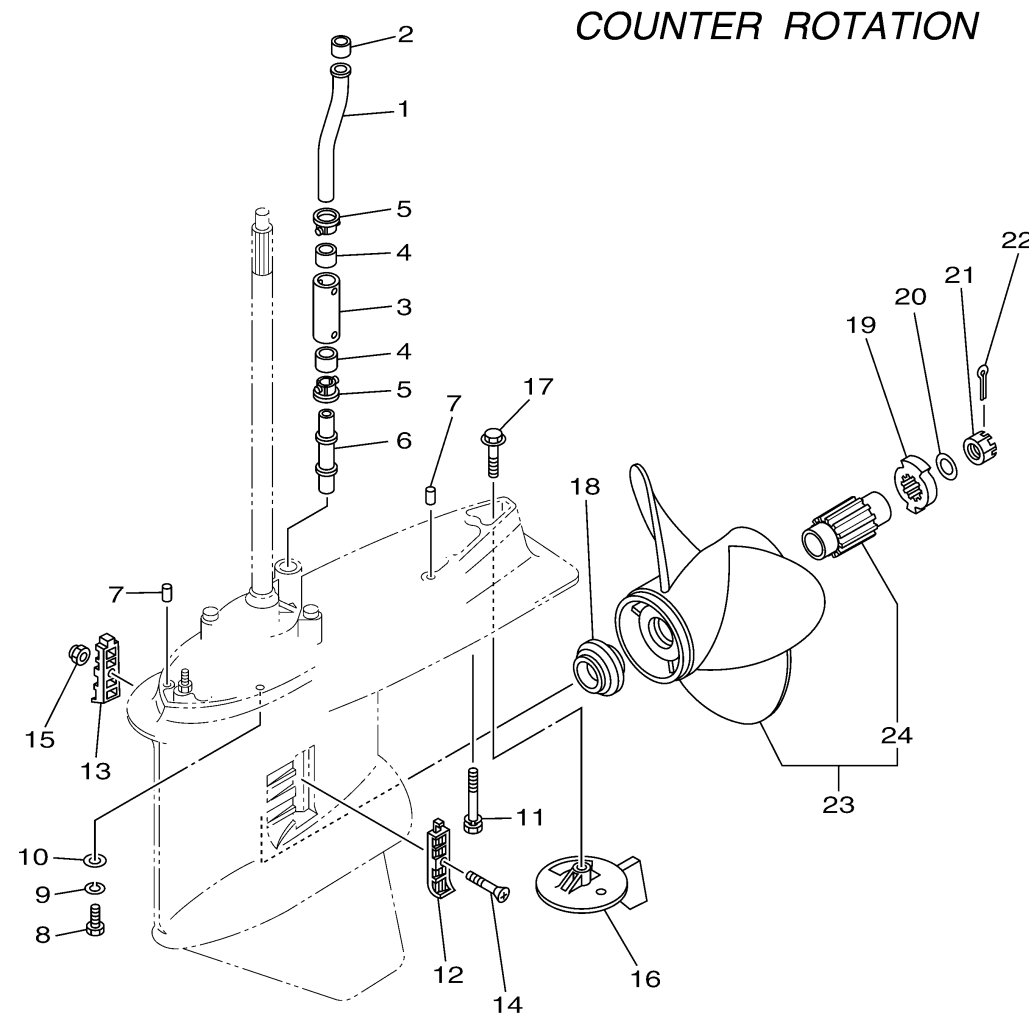
Ref No.	Part Number	Description	Qty	Remarks
1	63P-44361-00-00	TUBE, WATER 1	1	
2	6E5-44365-00-00	.DAMPER, WATER SEAL 1	1	
3	63P-44362-00-00	TUBE, WATER 2	1	X(25.3")
4	6E5-44365-00-00	.DAMPER, WATER SEAL 1	2	X(25.3")
5	6E5-44312-00-00	COVER, WATER PUMP HOUSING	2	X(25.3")
6	63P-44363-00-00	TUBE, WATER 3	1	X(25.3")
7	93608-16M16-00	PIN, DOWEL	2	
8	97095-10045-00	BOLT	6	
9	92995-10100-00	WASHER	6	
10	92995-10600-00	WASHER	6	
11	90119-10008-00	BOLT, WITH WASHER	1	X(25.3")
12	6J9-45214-00-00	COVER, WATER INLET 1	1	
13	6J9-45215-00-00	COVER, WATER INLET 2	1	
14	90152-05M08-00	SCREW, COUNTERSUNK	1	
15	90185-05002-00	NUT, NYLON	1	
16	6K1-45371-02-00	TAB-TRIM	1	
17	90105-10M00-00	BOLT, FLANGE	1	
18	63P-45987-00-00	SPACER 1	1	
19	6CE-45997-00-00	SPACER 2	1	
20	92990-18200-00	WASHER	1	

CONTINUED ON NEXT FRAME >



LOWER CASING DRIVE 4

Ref No.	Part Number	Description	Qty	Remarks
21	90171-18M04-00	NUT, CASTLE	1	
22	91490-40030-00	PIN. COTTER	1	
23	68G-45972-10-00	PROPELLER (3X14-1/4"X17"-ML)	1	UR SDS PROP.
23	68G-45978-10-00	PROPELLER (3X14-1/4"X18"-ML)	1	UR SDS PROP.
23	68G-45976-10-00	PROPELLER (3X13-3/4"X21"-ML)	1	UR SDS PROP.
23	68G-45974-10-00	PROPELLER (3X13-3/4"X19"-ML)	1	UR SDS PROP.
23	68G-45970-10-00	PROPELLER (3X14-1/2X15-ML)	1	UR SDS PROP.
24	6CE-45C81-00-00	. .DAMPER RUBBER, PROPELLER 1	1	




64PB100-M290