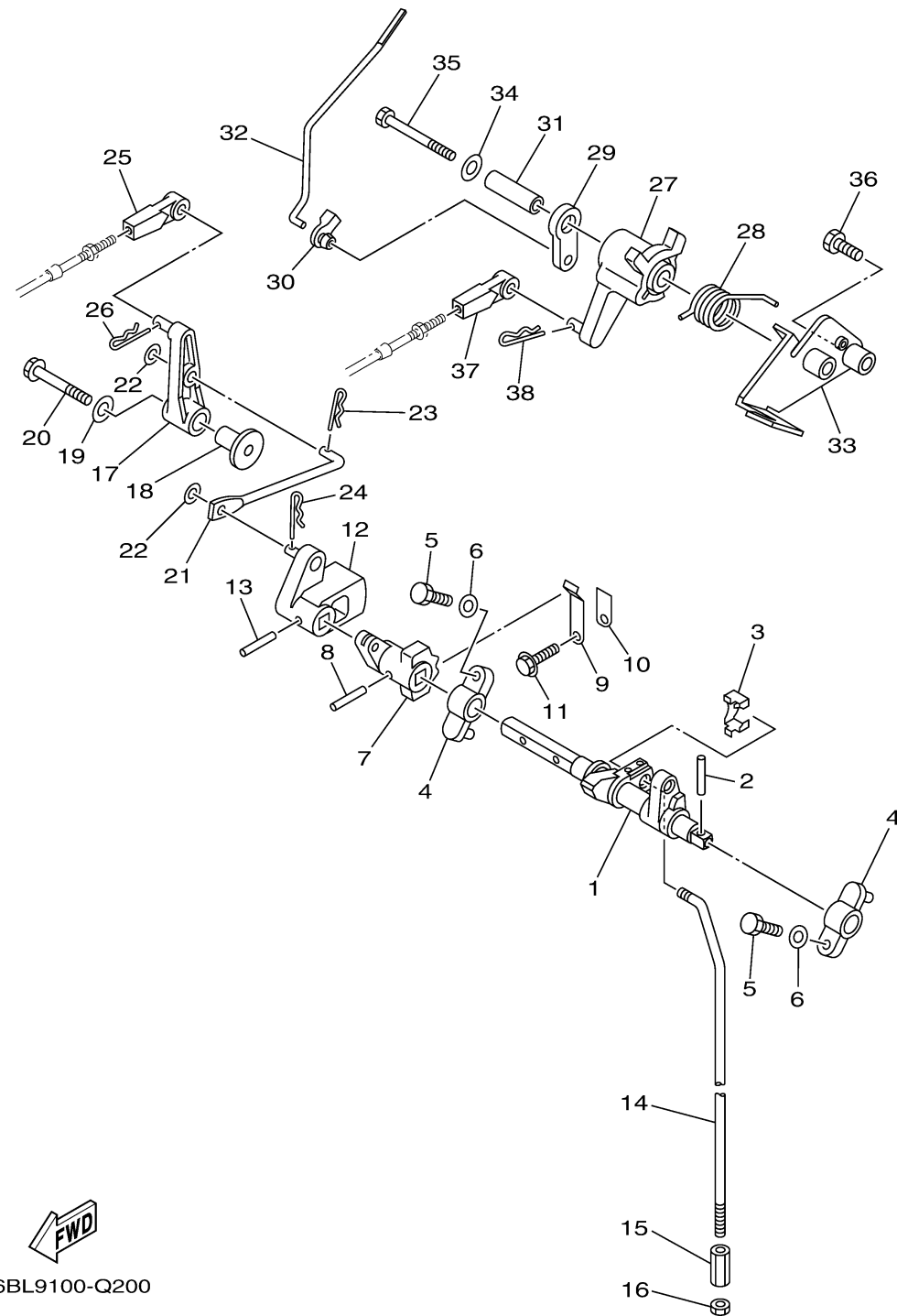


CONTROL



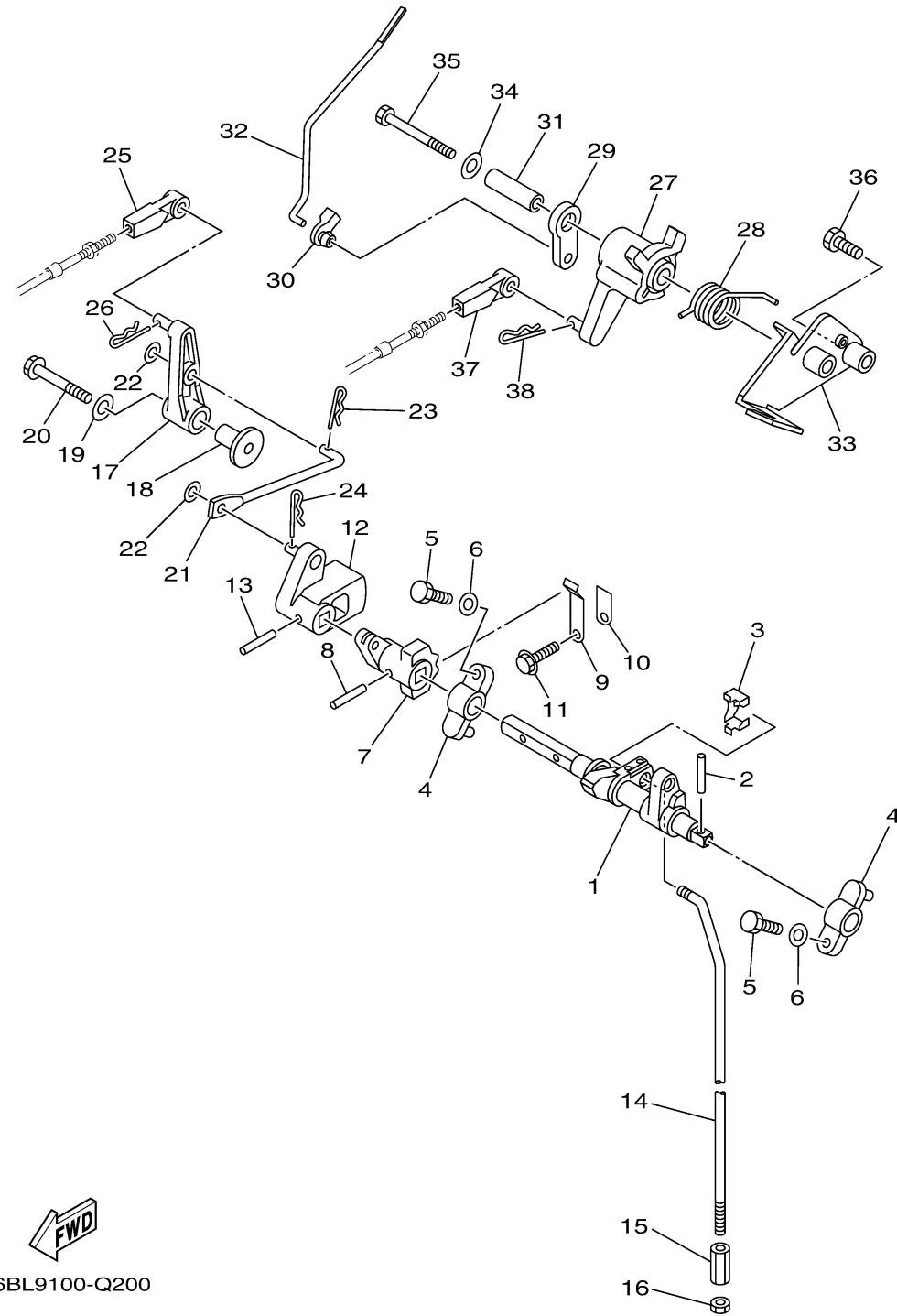

6BL9100-Q200

Ref No.	Part Number	Description	Qty	Remarks
1	6BL-44121-01-00	LEVER, SHIFT ROD	1	
2	90254-03M05-00	PIN, SPRING	1	
3	6AH-26364-00-00	END, CABLE 2	1	
4	6G1-41662-01-94	BRACKET 2	2	
5	97095-06020-00	BOLT	2	
6	92995-06600-00	WASHER	2	
7	6BL-44173-00-00	LEVER, SHIFT CONTROL	1	
8	90254-03M05-00	PIN, SPRING	1	
9	65W-44116-00-00	SPRING	1	
10	66R-44114-00-00	STOPPER	1	
11	95895-06014-00	BOLT, FLANGE	1	
12	6BL-44142-00-00	JOINT	1	
13	90254-03M05-00	PIN, SPRING	1	
14	6BL-44143-00-00	ROD, SHIFT	1	
15	67C-44146-00-00	CONNECTOR, SHIFT ROD 2	1	
16	95380-06700-00	NUT	1	
17	6BL-44125-00-00	.LEVER, SHIFT ROD	1	
18	90387-06M86-00	COLLAR	1	
19	90201-06M31-00	WASHER, PLATE	1	
20	97595-06535-00	BOLT, WITH WASHER	1	

CONTINUED ON NEXT FRAME >

CONTROL

Ref No.	Part Number	Description	Qty	Remarks
21	6BL-44192-00-00	.LINK, SHIFT ROD	1	
22	90201-05M06-00	.WASHER, PLATE	2	
23	90468-10005-00	CLIP	1	
24	90468-18001-00	CLIP	1	
25	663-48344-00-00	CABLE END, REMOTE CONTROL	1	
26	90468-18008-00	CLIP	1	
27	6BL-41638-00-00	.PULLEY	1	
28	90508-20040-00	.SPRING, TORSION	1	
29	65W-41283-00-00	LEVER, FREE ACCEL.	1	
30	6J8-41262-00-00	JOINT, CHOKE LEVER	1	
31	90387-06139-00	COLLAR	1	
32	6BL-41211-00-00	.LINK, ACCEL.	1	
33	6BL-14571-10-00	.BRACKET, THROTTLE	1	
34	90201-06M31-00	WASHER, PLATE	1	
35	97095-06065-00	.BOLT	1	
36	97095-06025-00	BOLT	1	
37	663-48344-00-00	CABLE END, REMOTE CONTROL	1	
38	90468-18008-00	CLIP	1	




 6BL9100-Q200