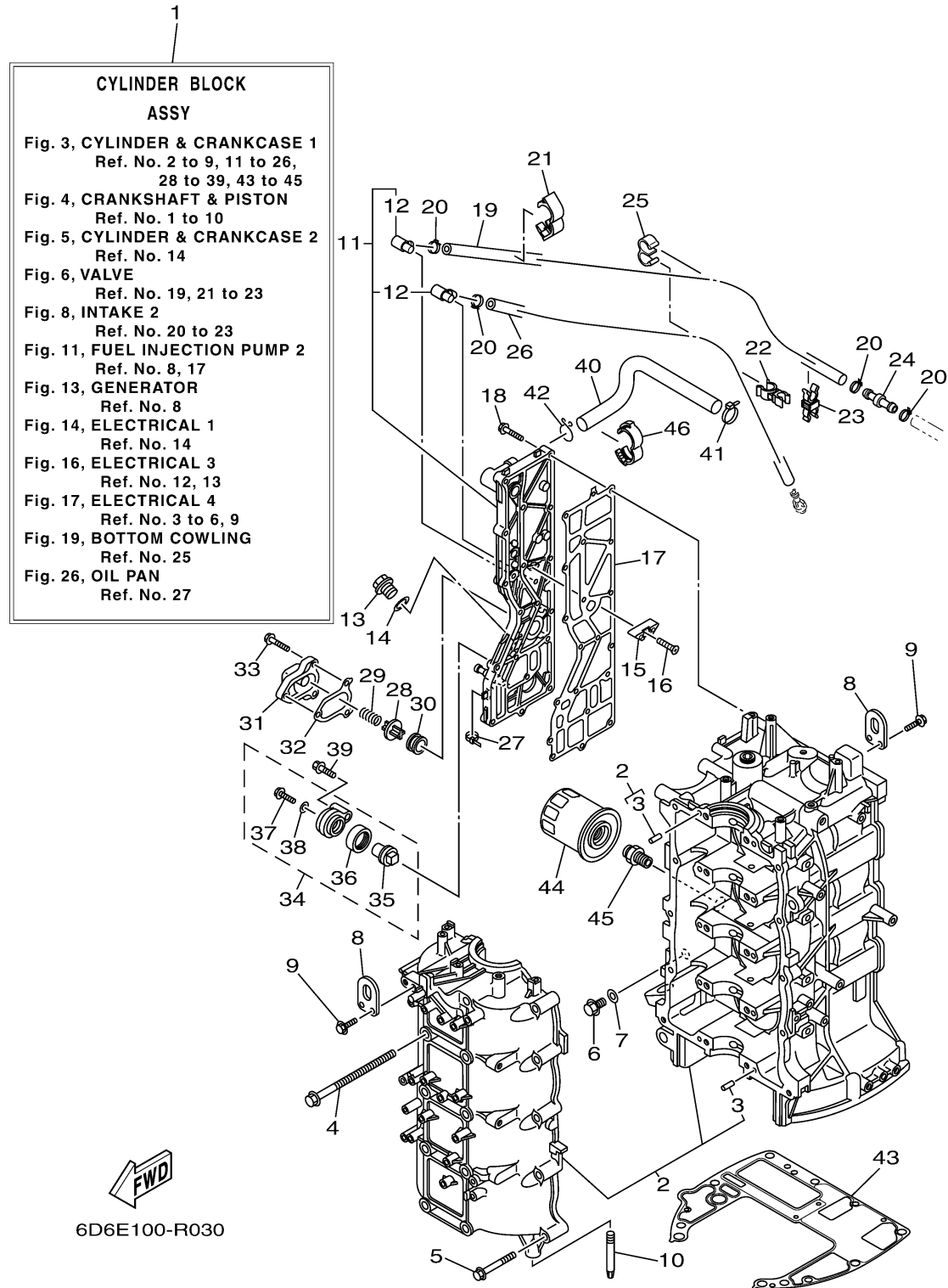


CYLINDER CRANKCASE 1

Ref No.	Part Number	Description	Qty	Remarks
1	6D8-W009B-08-9S	CYLINDER BLOCK ASSY	1	
2	6D8-15100-02-00	CRANKCASE ASSY	1	
3	93606-12019-00	.PIN, DOWEL	10	
4	90119-10M88-00	BOLT, WITH WASHER	10	
5	90119-08M66-00	BOLT, WITH WASHER	10	
6	90340-14M06-00	PLUG, STRAIGHT SCREW	1	
7	90430-14115-00	.GASKET	1	
8	62Y-11119-00-00	HANGER, ENGINE	2	
9	97595-06520-00	BOLT, WITH WASHER	4	
10	67F-15142-00-00	GUIDE 1	2	
11	6D8-41113-51-9S	OUTER COVER, EXHAUST	1	
12	676-11372-00-00	.NIPPLE, HOSE	2	
13	90340-18M09-00	.PLUG, STRAIGHT SCREW	1	
14	90201-186F1-00	.WASHER, PLATE	1	
15	6E5-11325-00-00	ANODE	3	
16	98780-04016-00	SCREW, FLAT HEAD	3	
17	67F-41114-A2-00	.GASKET, EXHAUST OUTER COVER	1	
18	90119-06MA4-00	BOLT, WITH WASHER	18	
19	6D8-42541-00-00	PIPE 1	1	
20	90465-11M10-00	CLAMP	4	

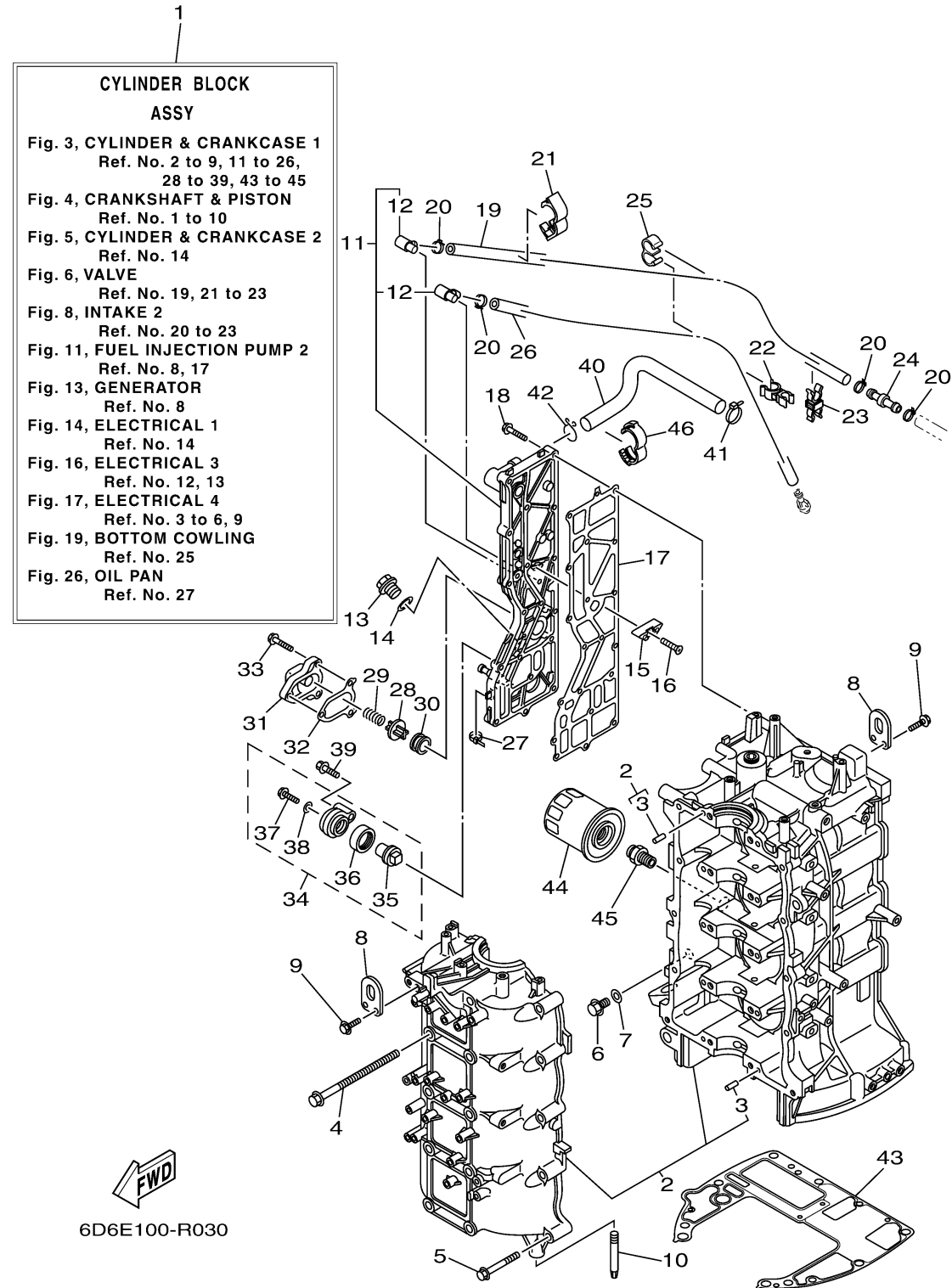
CONTINUED ON NEXT FRAME >



CYLINDER CRANKCASE 1

Ref No.	Part Number	Description	Qty	Remarks
21	90464-18004-00	CLAMP	1	
22	90464-10010-00	CLAMP	1	
23	90464-11009-00	CLAMP	1	
24	6D8-24378-00-00	PIPE, JOINT 3	1	
25	90464-09M31-00	CLAMP	1	
26	68V-42541-20-00	PIPE 1	1	
27	90465-11M10-00	CLAMP	1	
28	6G5-12416-00-00	VALVE, PRESSURE CONTROL	1	
29	90501-16M11-00	SPRING, COMPRESSION	1	
30	90480-20M05-00	GROMMET	1	
31	67F-1246A-A0-9S	COVER 1	1	
32	67F-12435-A0-00	.GASKET	1	
33	90119-06MA2-00	BOLT, WITH WASHER	3	
34	69J-11301-00-00	ANODE COVER ASSY	1	
35	67F-11325-01-00	. .ANODE	1	
36	67F-11328-00-00	. .GROMMET, ANODE	1	
37	90105-06M07-00	. .BOLT, FLANGE	1	
38	90430-06M03-00	. .GASKET	1	
39	97575-08540-00	BOLT, WITH WASHER	1	
40	67F-1243A-00-00	HOSE 1	1	

CONTINUED ON NEXT FRAME >



CYLINDER CRANKCASE 1

Ref No.	Part Number	Description	Qty	Remarks
41	90465-11M59-00	CLAMP	1	
42	90467-20M15-00	CLIP	1	
43	68V-11351-00-00	.GASKET, CYLINDER	1	
44	5GH-13440-70-00	ELEMENT ASSY, OIL CLEANER	1	
45	90401-20007-00	BOLT, UNION	1	
46	90464-16001-00	CLAMP	1	

