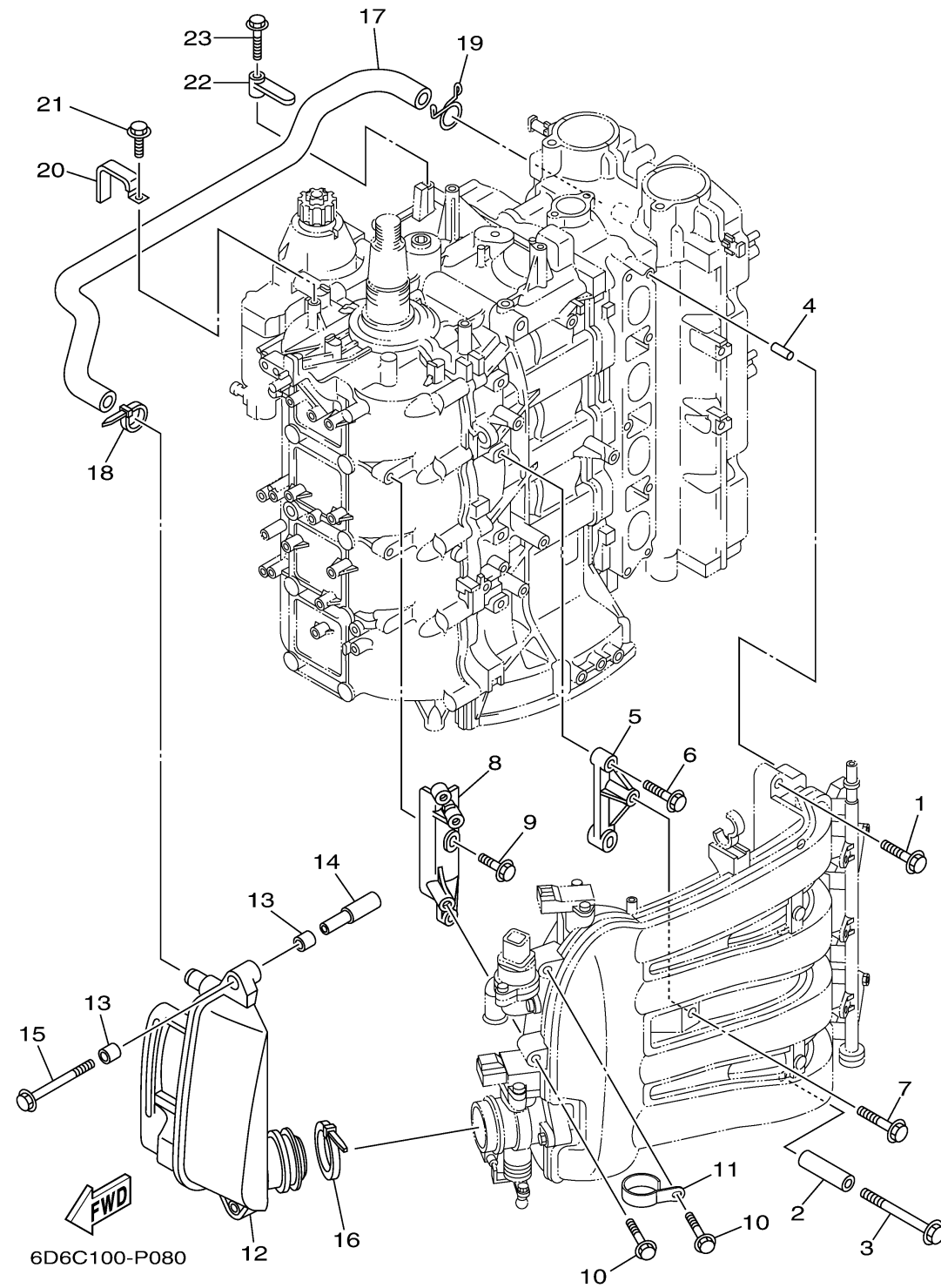


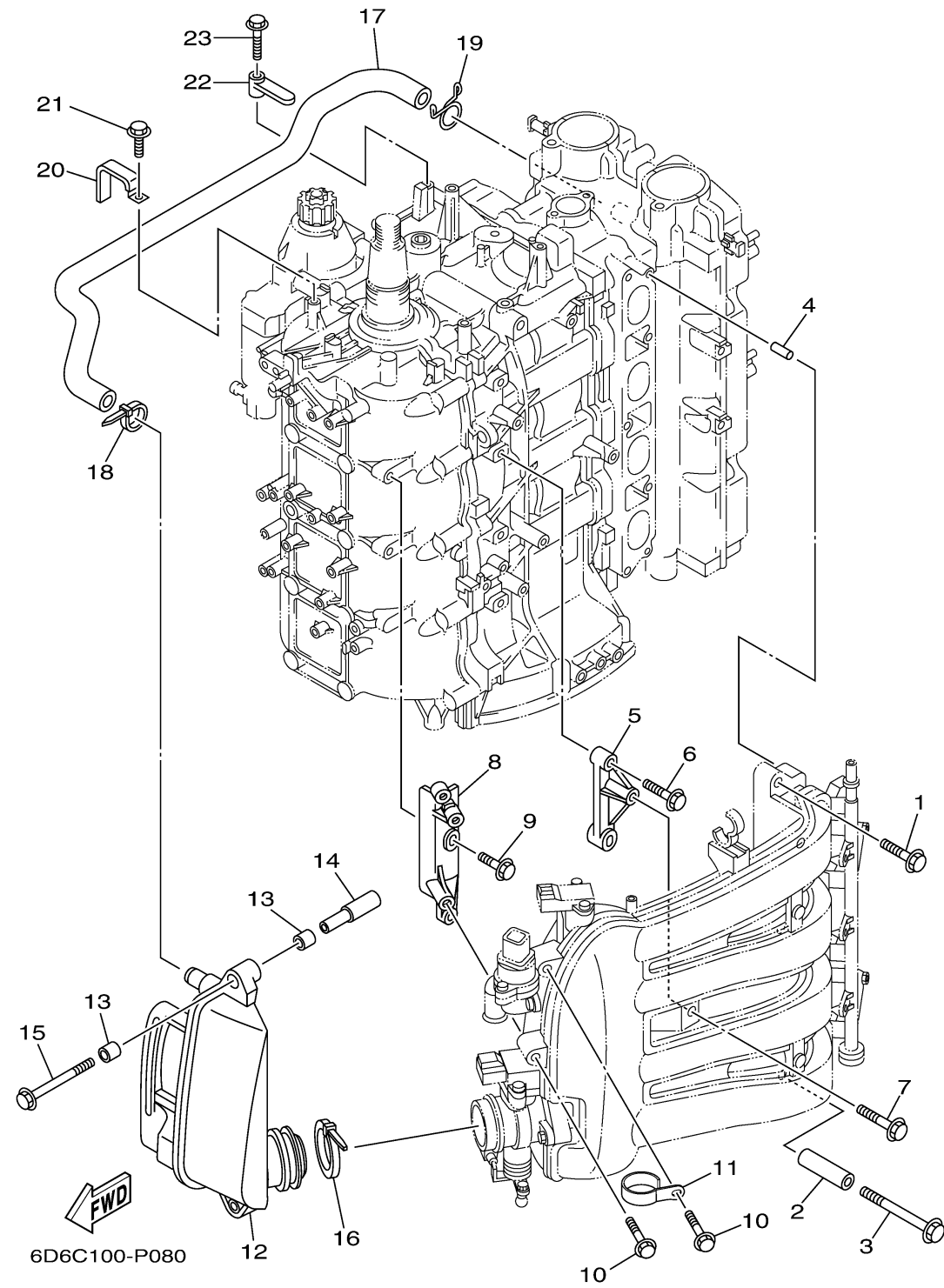
# INTAKE 2



| Ref No. | Part Number     | Description           | Qty | Remarks |
|---------|-----------------|-----------------------|-----|---------|
| 1       | 90119-08069-00  | BOLT, WITH WASHER     | 4   |         |
| 2       | 90387-08033-00  | COLLAR                | 1   |         |
| 3       | 90119-08M03-00  | BOLT, WITH WASHER     | 1   |         |
| 4       | 91690-50014-00  | PIN, SPRING           | 2   |         |
| 5       | 6D8-14291-00-00 | BRACKET 1             | 1   |         |
| 6       | 97595-06530-00  | BOLT, WITH WASHER     | 2   |         |
| 7       | 90119-06087-00  | BOLT, WITH WASHER     | 1   |         |
| 8       | 6D8-14292-00-00 | BRACKET 2             | 1   |         |
| 9       | 97595-06520-00  | BOLT, WITH WASHER     | 2   |         |
| 10      | 90119-06087-00  | BOLT, WITH WASHER     | 2   |         |
| 11      | 6D8-13782-00-00 | STAY                  | 1   |         |
| 12      | 6D6-14440-01-00 | SILENCER ASSY, INTAKE | 1   |         |
| 13      | 90386-08001-00  | BUSH                  | 4   |         |
| 14      | 90387-07013-00  | COLLAR                | 2   |         |
| 15      | 90119-06113-00  | BOLT, WITH WASHER     | 2   |         |
| 16      | 90464-76001-00  | CLAMP                 | 1   |         |
| 17      | 6D8-15373-00-00 | PIPE, BREATHER        | 1   |         |
| 18      | 90465-11M59-00  | CLAMP                 | 1   |         |
| 19      | 90467-20M15-00  | CLIP                  | 1   |         |
| 20      | 90465-12M03-00  | CLAMP                 | 1   |         |

CONTINUED ON NEXT FRAME >

# INTAKE 2



| Ref No. | Part Number     | Description       | Qty | Remarks |
|---------|-----------------|-------------------|-----|---------|
| 21      | 97595-06512-00  | BOLT, WITH WASHER | 1   |         |
| 22      | 6D8-82544-00-00 | CLAMP             | 1   |         |
| 23      | 95895-06025-00  | BOLT, FLANGE      | 1   |         |