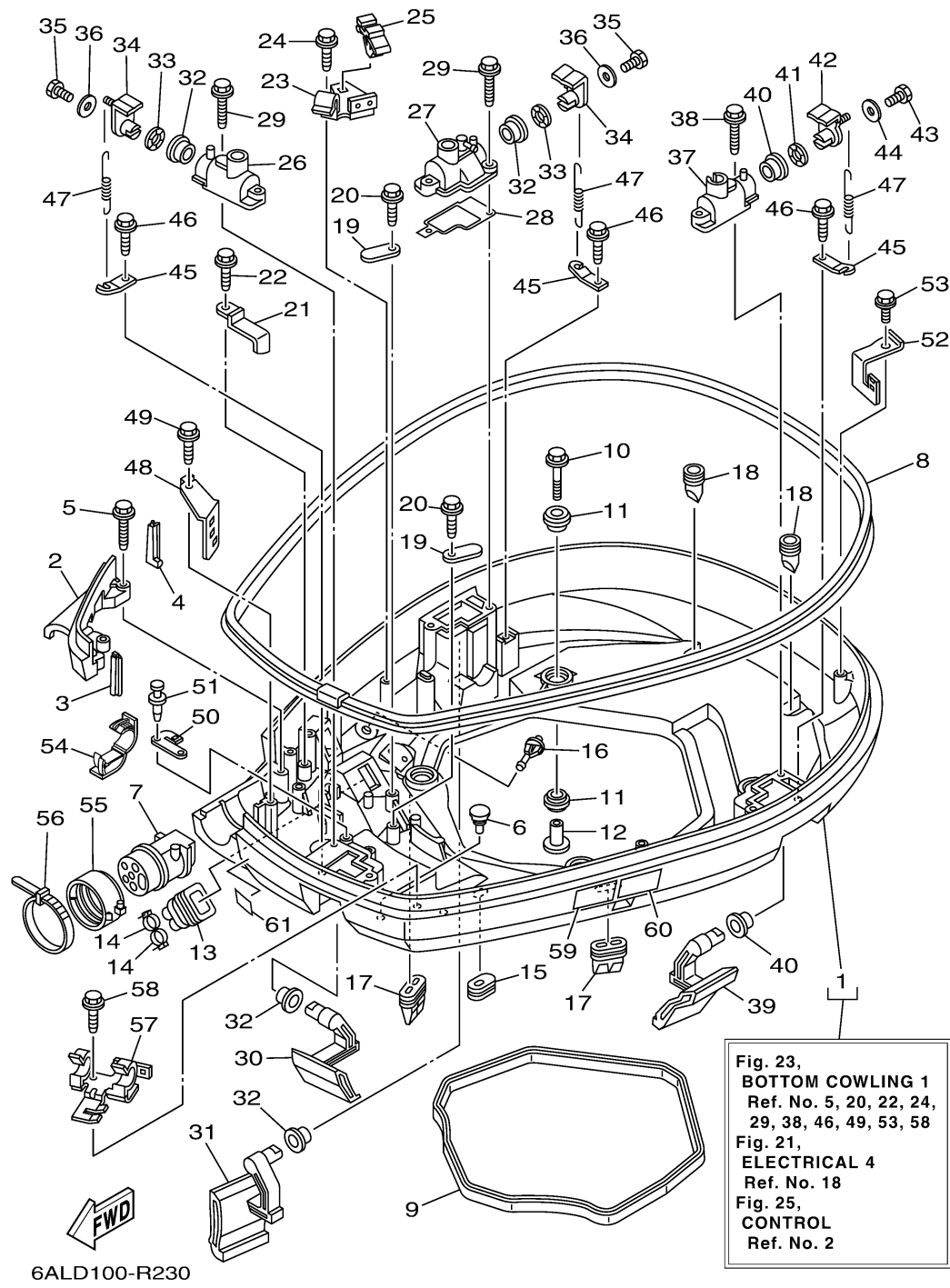


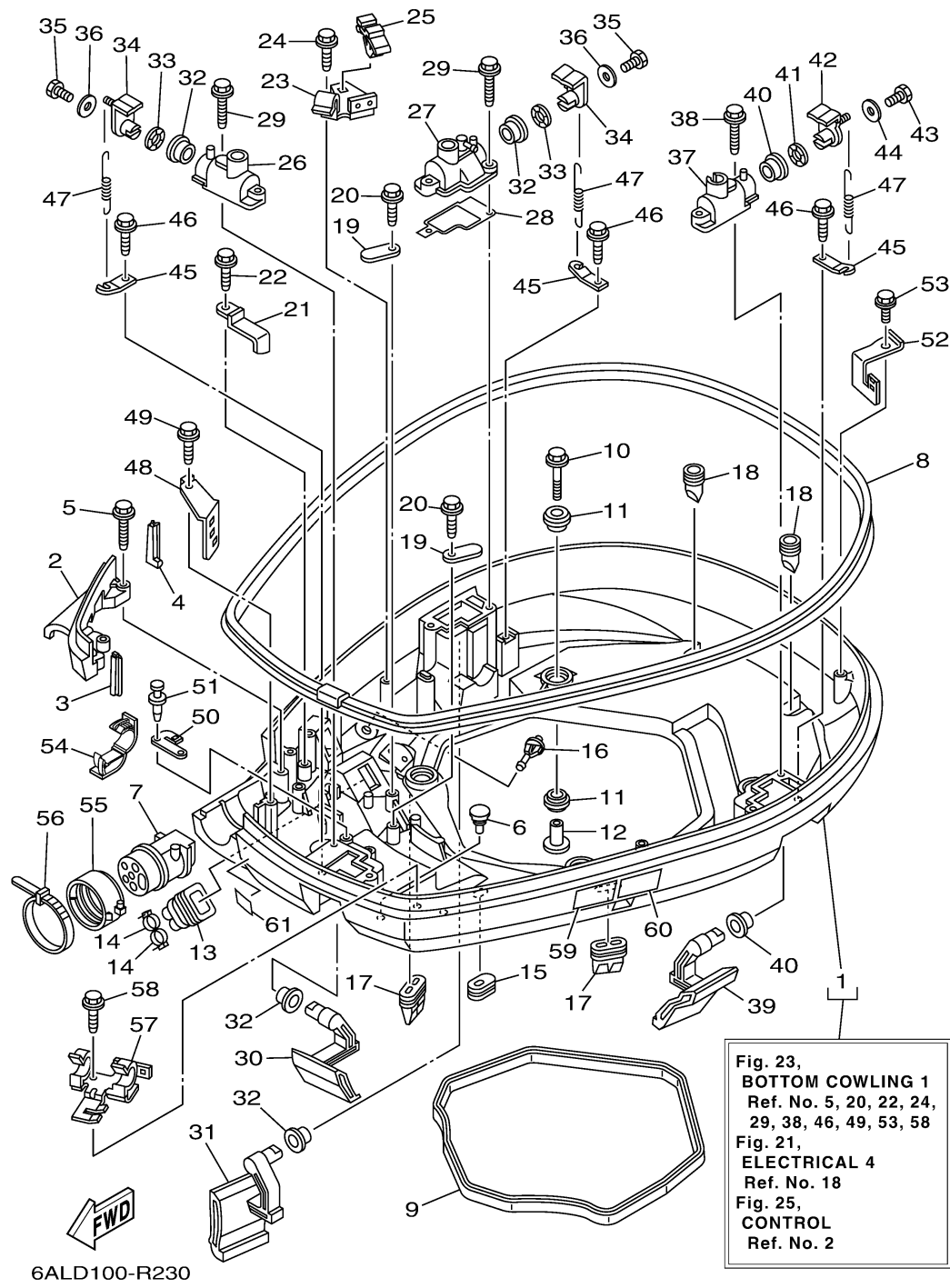
# BOTTOM COWLING 1



Ref No.	Part Number	Description	Qty	Remarks
1	6P2-42710-00-8D	BOTTOM COWLING ASSY	1	
2	6P2-42738-00-8D	PLATE, FITTING	1	
3	6P2-42717-00-00	RUBBER, SEAL 2	1	
4	6P2-42718-00-00	RUBBER, SEAL 3	1	
5	90109-06M82-00	BOLT	2	
6	6H4-42748-00-00	GROMMET	2	
7	6P2-42725-00-00	GROMMET	1	
8	6P2-42615-00-00	SEAL	1	
9	69J-42716-00-00	RUBBER SEAL 1	1	
10	90119-08M22-00	BOLT, WITH WASHER	4	
11	90480-22M81-00	GROMMET	8	
12	90387-08M37-00	COLLAR	4	
13	6H1-42726-21-00	GROMMET	1	
14	90465-11M10-00	CLAMP	2	
15	61A-42727-00-00	GROMMET	1	
16	6P2-44391-00-00	NIPPLE, HOSE	1	
17	69J-42717-00-00	RUBBER, SEAL 2	2	
18	61A-42717-00-00	RUBBER, SEAL 2	2	
19	6E5-82588-00-00	PLATE	2	
20	90109-06M81-00	BOLT	2	

CONTINUED ON NEXT FRAME >

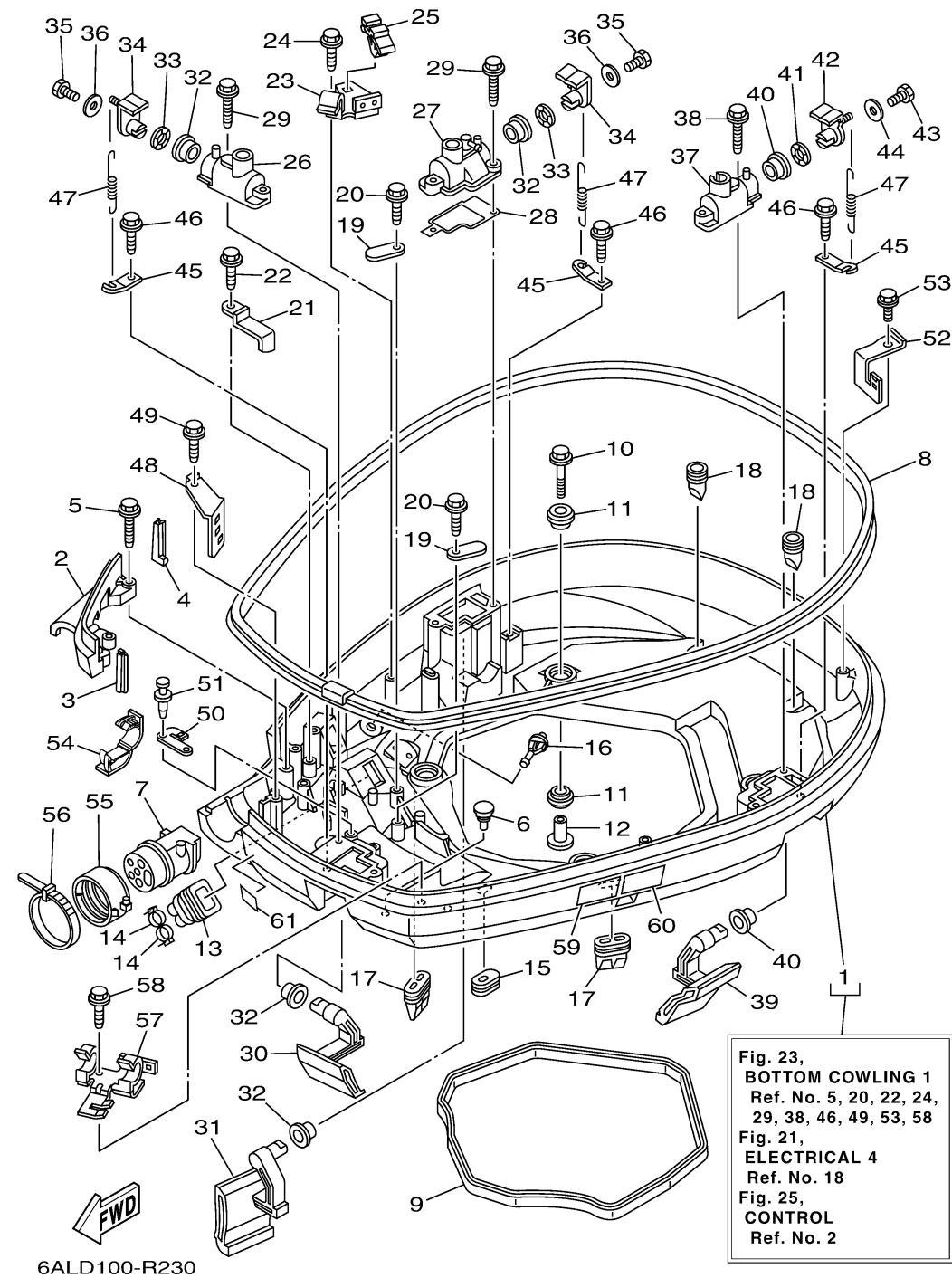
# BOTTOM COWLING 1



Ref No.	Part Number	Description	Qty	Remarks
21	90462-20001-00	CLAMP	1	
22	90109-06M86-00	BOLT	1	
23	6P2-82554-00-00	STAY, NEUTRAL SWITCH	1	
24	90109-06M86-00	BOLT	1	
25	90464-09M47-00	.CLAMP	1	
26	69J-42828-02-9S	PLATE, CLAMP	1	
27	6P2-42828-00-9S	PLATE, CLAMP	1	
28	6P2-42722-00-00	GASKET 2	1	
29	90109-06M82-00	BOLT	4	
30	69J-42815-00-8D	LEVER, CLAMP 1	1	
31	69J-42817-00-8D	LEVER, CLAMP 3	1	
32	90386-15M73-00	BUSH	4	
33	90206-15M18-00	WASHER, WAVE	2	
34	63P-42818-01-00	LEVER, CLAMP 4	2	
35	97D95-06020-00	BOLT, HEXAGON DEEP RECESS	2	
36	90201-06068-00	WASHER, PLATE	2	
37	68F-42828-11-9S	PLATE, CLAMP	1	
38	90109-06M82-00	BOLT	2	
39	69J-42816-00-8D	LEVER, CLAMP 2	1	
40	90386-15M73-00	BUSH	2	

CONTINUED ON NEXT FRAME >

# BOTTOM COWLING 1



Ref No.	Part Number	Description	Qty	Remarks
41	90206-15M18-00	WASHER, WAVE	1	
42	68V-42818-01-00	LEVER, CLAMP 4	1	
43	97D95-06020-00	BOLT, HEXAGON DEEP RECESS	1	
44	90201-06068-00	WASHER, PLATE	1	
45	64D-43144-00-00	HOOK, SPRING	3	
46	90109-06M86-00	BOLT	3	
47	90506-18M40-00	SPRING, TENSION	3	
48	6P2-42743-00-00	BRACKET	1	
49	90109-06M82-00	BOLT	1	
50	6P2-42766-20-00	BRACKET 2	1	
51	90269-05005-00	RIVET	2	
52	69J-8366G-02-00	BRACKET 3	1	
53	90109-06M86-00	BOLT	1	
54	90464-18004-00	CLAMP	2	
55	68F-42753-00-00	FASTNER	1	AP
56	90464-20258-00	CLAMP	1	AP
57	6P2-82594-00-00	CLAMP	1	
58	90109-06M86-00	BOLT	1	
59	6EE-42794-40-00	LABEL, WARNING (GENERAL)	1	
60	6EE-42794-50-00	LABEL, WARNING (GENERAL)	1	

CONTINUED ON NEXT FRAME >

# BOTTOM COWLING 1

Ref No.	Part Number	Description	Qty	Remarks
61	6AH-81996-00-00	MARK	1	

