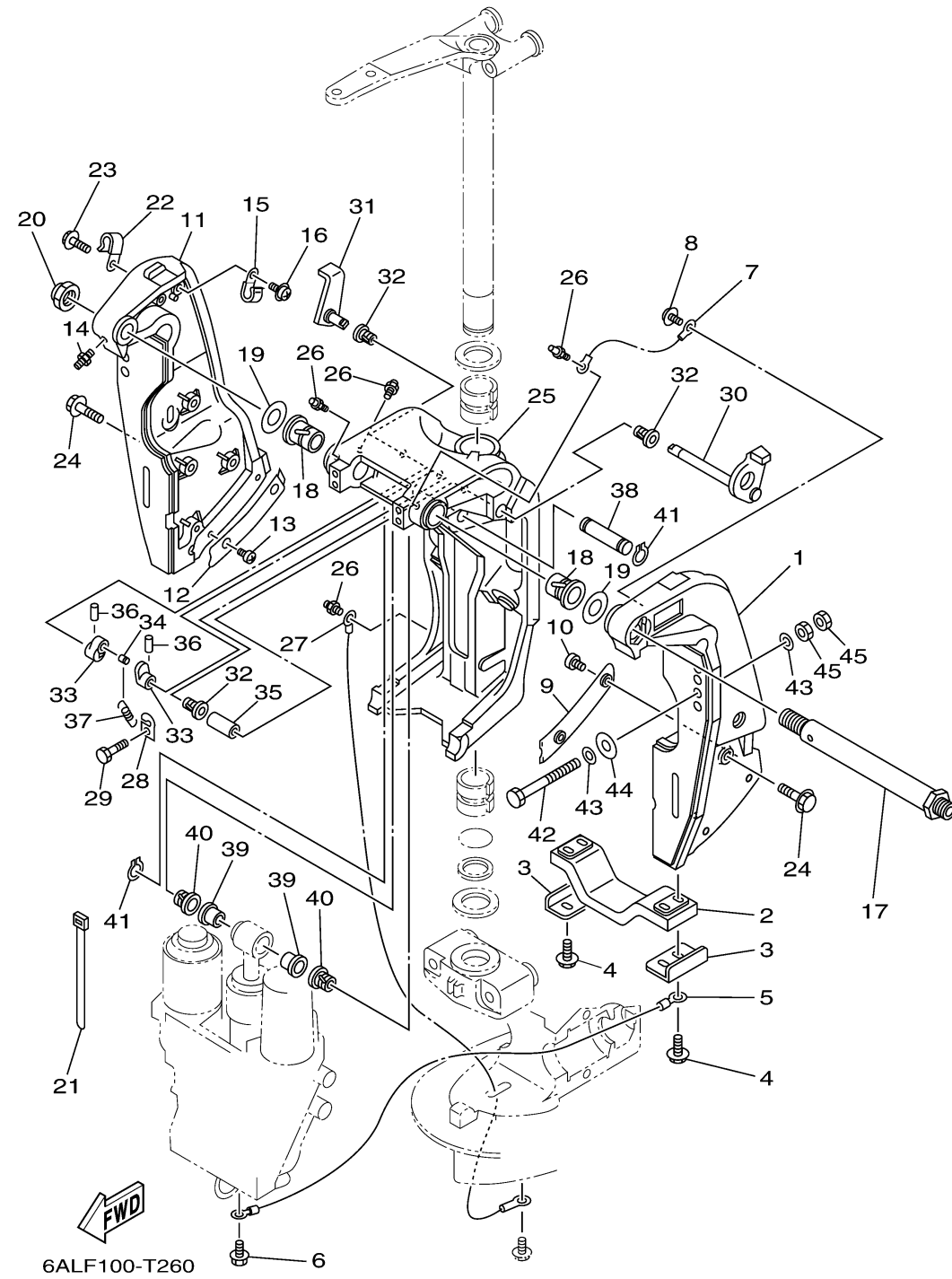


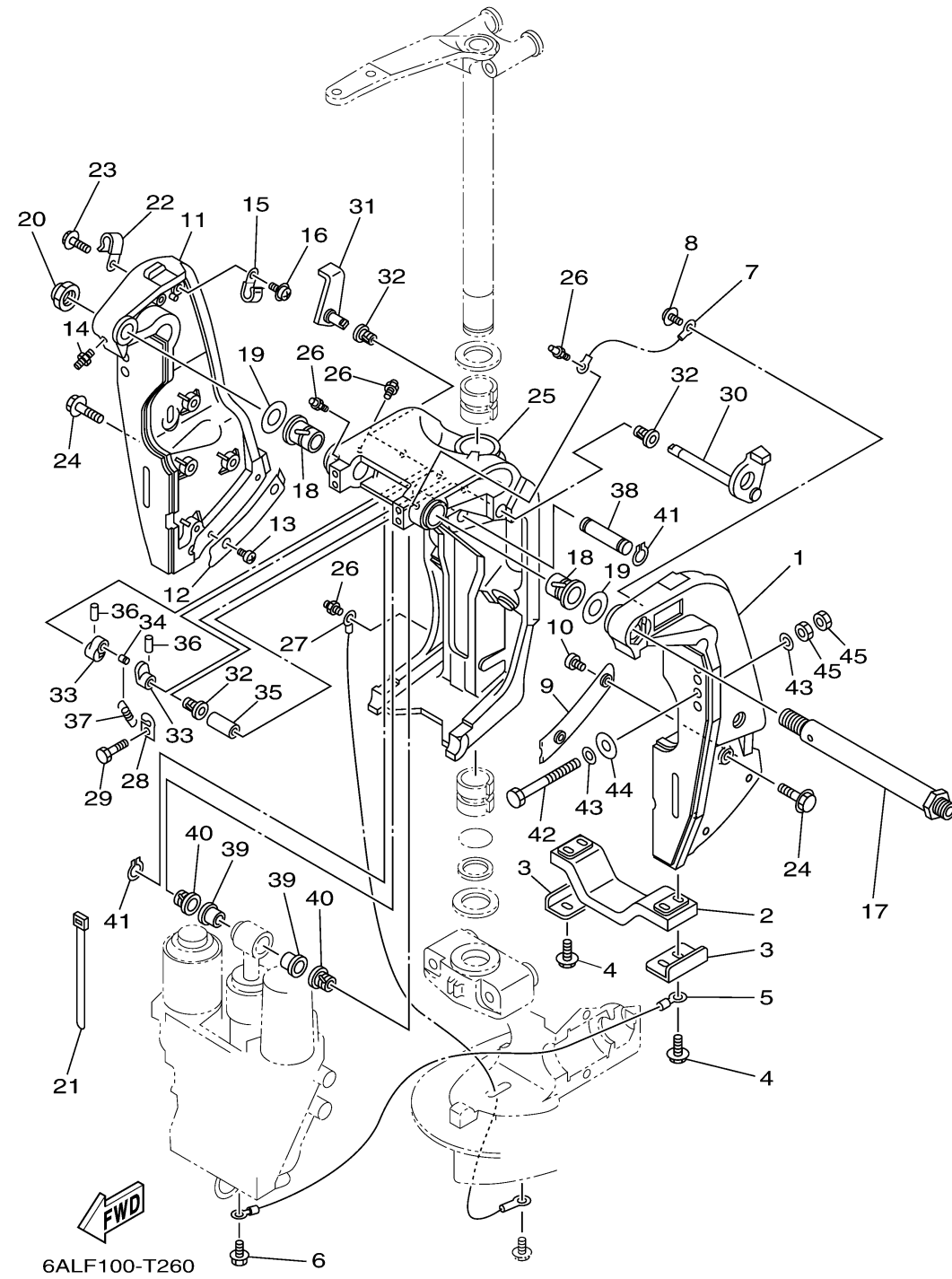
# BRACKET 1



Ref No.	Part Number	Description	Qty	Remarks
1	69J-43111-03-8D	BRACKET, CLAMP 1	1	
2	6G5-45251-02-00	ANODE	1	
3	6G5-44526-00-00	PLATE	2	
4	97E95-06525-00	BOLT, HEXAGON W/W DEEP RECESS	4	
5	6H1-82148-00-00	WIRE, LEAD 4	1	
6	97E95-06510-00	BOLT, HEXAGON W/W DEEP RECESS	1	
7	6E5-82148-00-00	WIRE, LEAD 4	1	
8	97985-06212-00	SCREW, WITH WASHER	1	
9	61A-43132-00-00	WASHER, FRICTION	1	
10	97885-06010-00	SCREW, PAN HEAD	2	
11	69J-43112-02-8D	BRACKET, CLAMP 2	1	
12	61A-43133-00-00	WASHER, FRICTION	1	
13	97885-06010-00	SCREW, PAN HEAD	2	
14	93700-06002-00	NIPPLE, GREASE	1	
15	90465-08M83-00	CLAMP	1	
16	97985-06212-00	SCREW, WITH WASHER	1	
17	6R3-43131-00-00	BOLT, CLAMP BRACKET	1	
18	90386-25M31-00	BUSH	2	
19	90201-26M59-00	WASHER, PLATE	2	
20	90185-22M11-00	NUT, SELF-LOCKING	1	

CONTINUED ON NEXT FRAME >

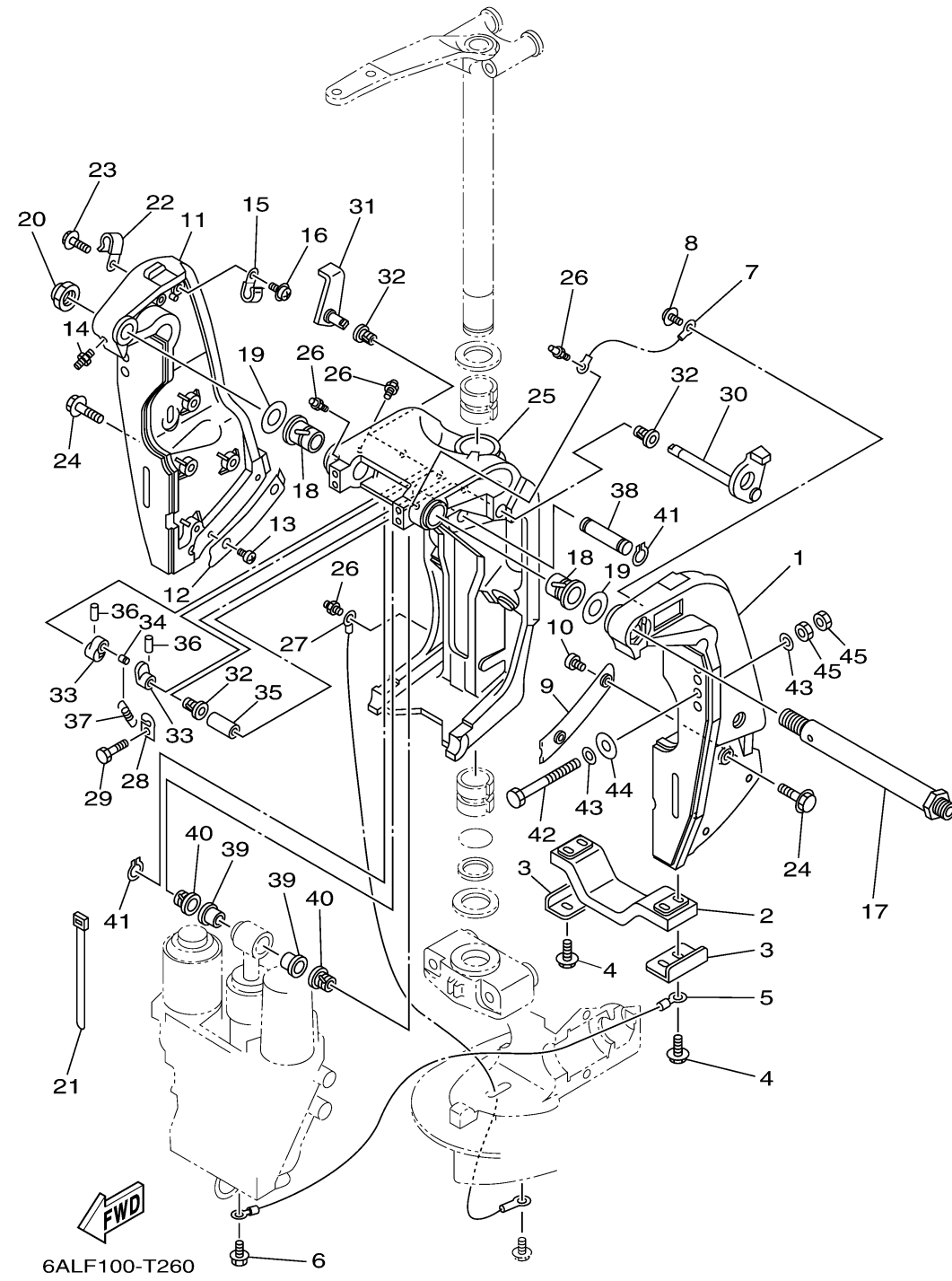
# BRACKET 1



Ref No.	Part Number	Description	Qty	Remarks
21	90465-11M10-00	CLAMP	4	
22	90465-08M83-00	CLAMP	1	
23	97E95-06514-00	BOLT, HEXAGON W/W DEEP RECESS	1	
24	90119-10024-00	BOLT, WITH WASHER	8	
25	61A-43311-22-8D	BRACKET, SWIVEL 1	1	
26	93700-06002-00	NIPPLE, GREASE	5	
27	69J-82147-00-00	WIRE, LEAD 5	1	
28	6G5-43144-00-00	HOOK, SPRING	1	
29	97D95-06010-00	BOLT, HEXAGON DEEP RECESS	1	
30	61A-43181-01-00	LEVER, TILT STOP 1	1	
31	6G5-43185-02-00	LEVER, TILT STOP 2	1	
32	90386-10M16-00	BUSH	3	
33	6G5-43148-00-00	COLLAR, DISTANCE	2	
34	90249-06M19-00	PIN	1	
35	90387-10M05-00	COLLAR	1	
36	91690-30020-00	PIN, SPRING	2	
37	90506-16003-00	SPRING, TENSION	1	
38	6E5-43126-10-00	PIN, UPPER SHOCK MOUNT	1	
39	90386-18M63-00	BUSH	2	
40	90386-18M14-00	BUSH	2	

CONTINUED ON NEXT FRAME >

# BRACKET 1



Ref No.	Part Number	Description	Qty	Remarks
41	93410-18M05-00	CIRCLIP	2	
42	90101-12M05-00	BOLT (L:130MM)	2	UR
42	90101-12047-00	BOLT (L:150MM)	2	UR
43	90201-13M01-00	WASHER, PLATE	8	
44	90201-12426-00	WASHER, PLATE	4	
45	95380-12600-00	NUT	8	