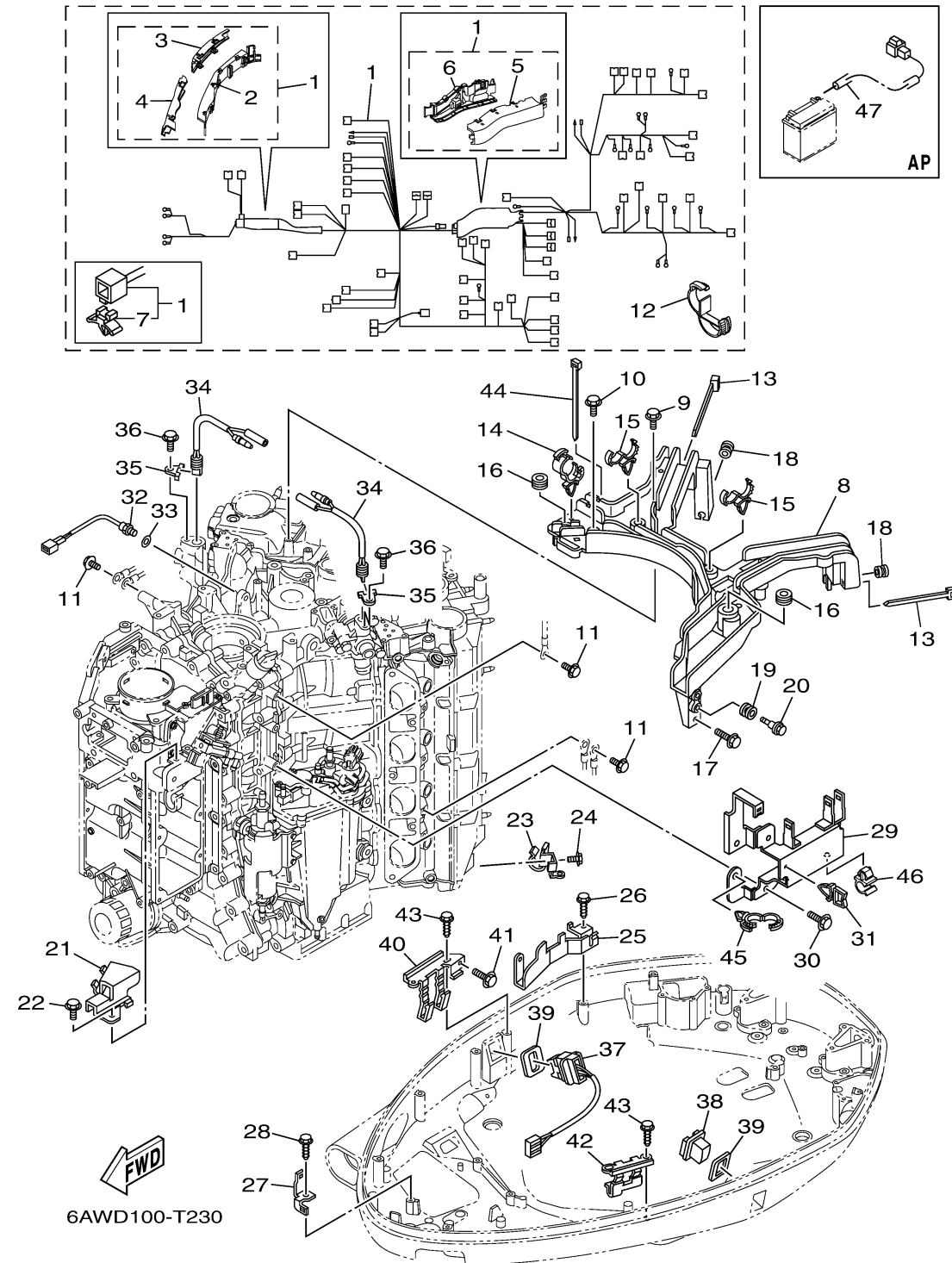


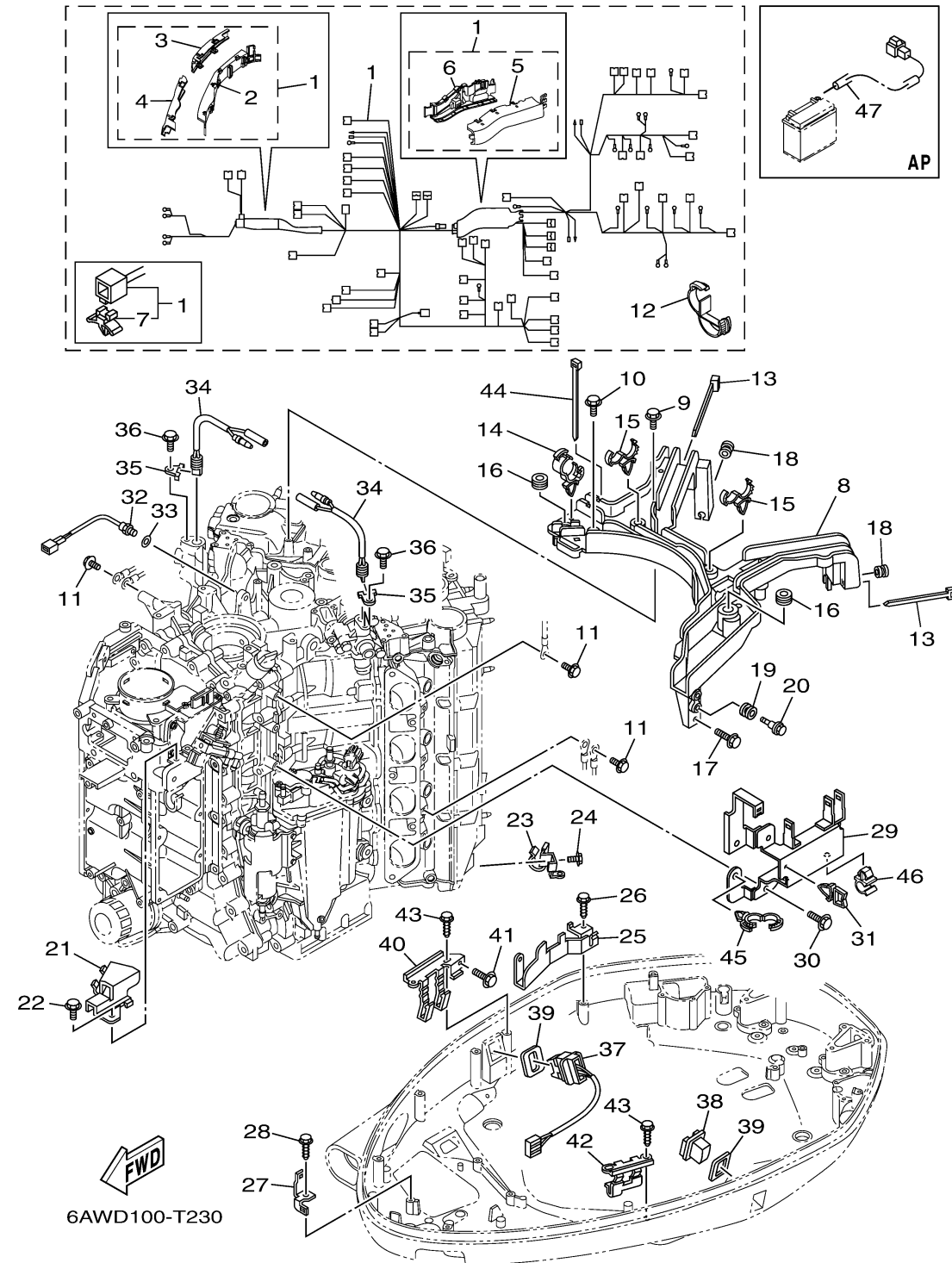
ELECTRICAL 5



Ref No.	Part Number	Description	Qty	Remarks
1	6AW-82590-32-00	WIRE HARNESS ASSY	1	
2	6AW-8A7A1-00-00	..PROTECTOR 1	1	
3	6AW-8A7A2-00-00	..PROTECTOR 2	1	
4	6AW-8A7A3-00-00	..PROTECTOR 3	1	
5	6AW-8A7A4-00-00	..PROTECTOR 4	1	
6	6AW-8A7A5-00-00	..PROTECTOR 5	1	
7	90464-09M47-00	..CLAMP	2	
8	6AW-82589-01-00	PROTECTOR, WIRE HARNESS	1	
9	97E95-06535-00	BOLT, HEXAGON W/W DEEP RECESS	2	
10	97E95-06525-00	BOLT, HEXAGON W/W DEEP RECESS	1	
11	97E95-06616-00	BOLT, HEXAGON W/W DEEP RECESS	3	
12	90464-25005-00	CLAMP	1	
13	90465-13M18-00	CLAMP	2	
14	90464-20181-00	CLAMP	1	
15	90464-18246-00	CLAMP	2	
16	90480-19368-00	GROMMET	2	
17	97E95-06512-00	BOLT, HEXAGON W/W DEEP RECESS	1	
18	90480-12314-00	GROMMET	2	
19	90480-12314-00	GROMMET	2	
20	90109-06MA1-00	BOLT	2	

CONTINUED ON NEXT FRAME >

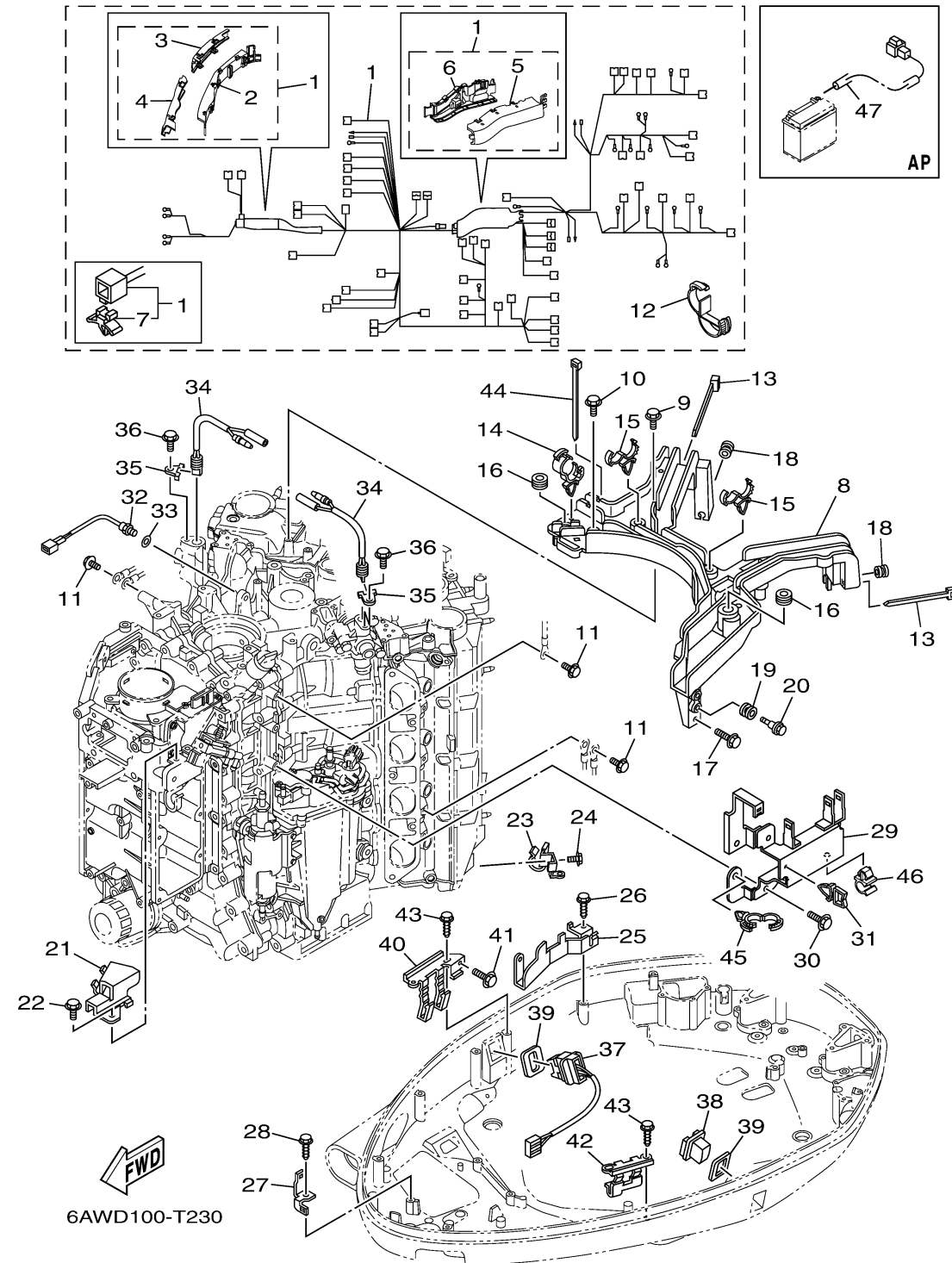
ELECTRICAL 5



Ref No.	Part Number	Description	Qty	Remarks
21	6AW-82388-00-00	PLATE	1	
22	97E95-06514-00	BOLT, HEXAGON W/W DEEP RECESS	1	
23	6AW-81677-00-00	CLAMP 1	1	
24	97E95-06514-00	BOLT, HEXAGON W/W DEEP RECESS	1	
25	6AW-8257G-00-00	CLAMP, CORD	1	
26	90109-06M86-00	BOLT	1	
27	6AW-42743-00-00	BRACKET	1	
28	90109-06M86-00	BOLT	1	
29	6AW-81845-10-00	PLATE	1	
30	97E95-06514-00	BOLT, HEXAGON W/W DEEP RECESS	2	
31	90464-11121-00	CLAMP	1	
32	61A-85790-00-00	THERMOSENSOR ASSY	1	
33	92990-10600-00	WASHER, PLATE	1	
34	6AW-82560-00-00	THERMO SWITCH ASSY	2	
35	6E9-82588-00-00	PLATE	2	
36	97E95-06516-00	BOLT, HEXAGON W/W DEEP RECESS	2	
37	6AW-82563-01-00	TRIM & TILT SWITCH ASSY	1	
38	69J-42723-01-00	COVER, BOTTOM	1	
39	69J-82587-00-00	GASKET	2	
40	6AX-83614-00-00	BRACKET	1	

CONTINUED ON NEXT FRAME >

ELECTRICAL 5



Ref No.	Part Number	Description	Qty	Remarks
41	97E95-06514-00	BOLT, HEXAGON W/W DEEP RECESS	1	
42	63P-83614-01-00	BRACKET	1	
43	90109-06M86-00	BOLT	4	
44	90465-14M66-00	CLAMP	1	
45	90464-20181-00	CLAMP	2	
46	90464-08051-00	CLAMP	2	
47	69J-81949-02-00	WIRE, LEAD (ISOLATOR, 3.8M)	1	AP