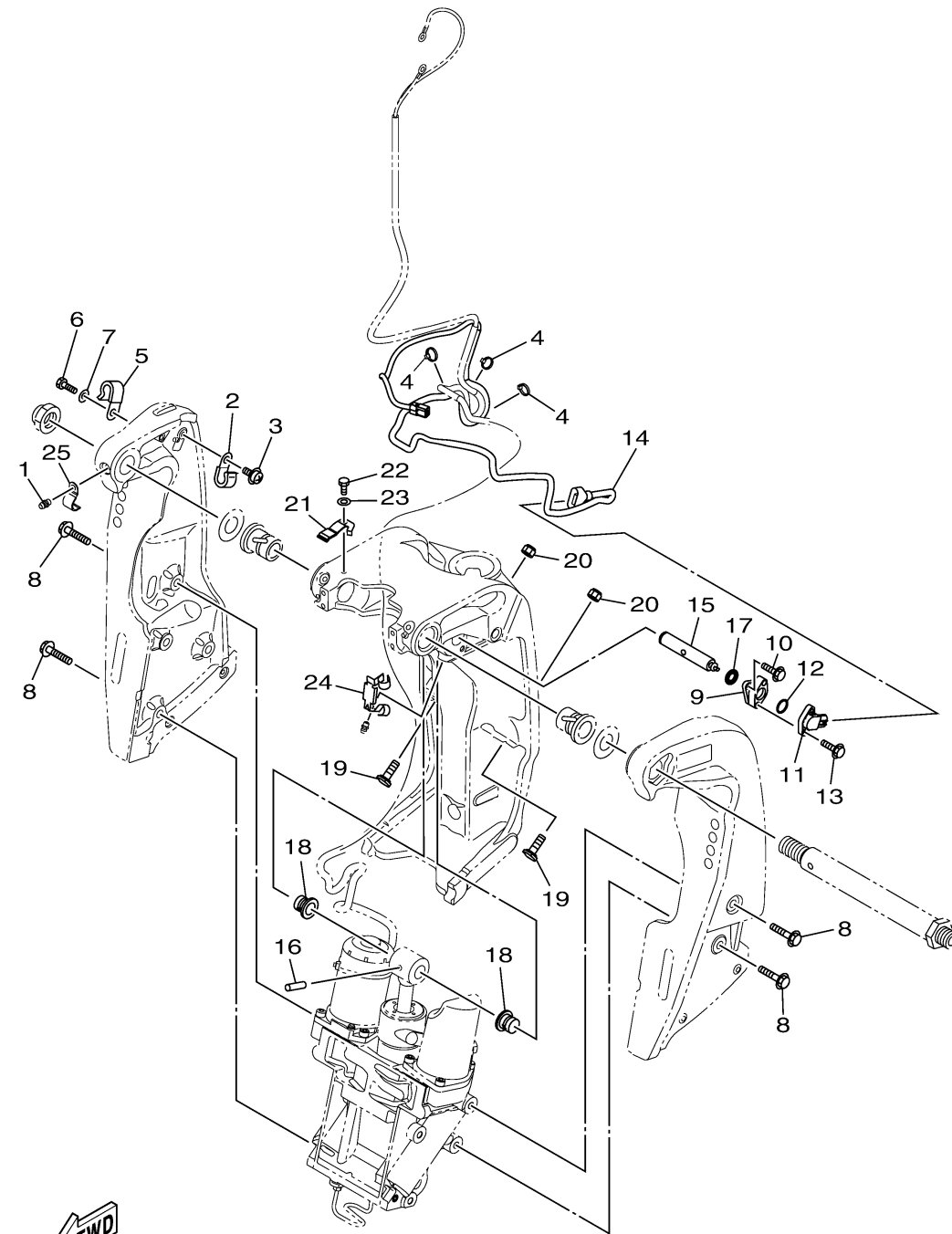


BRACKET 2



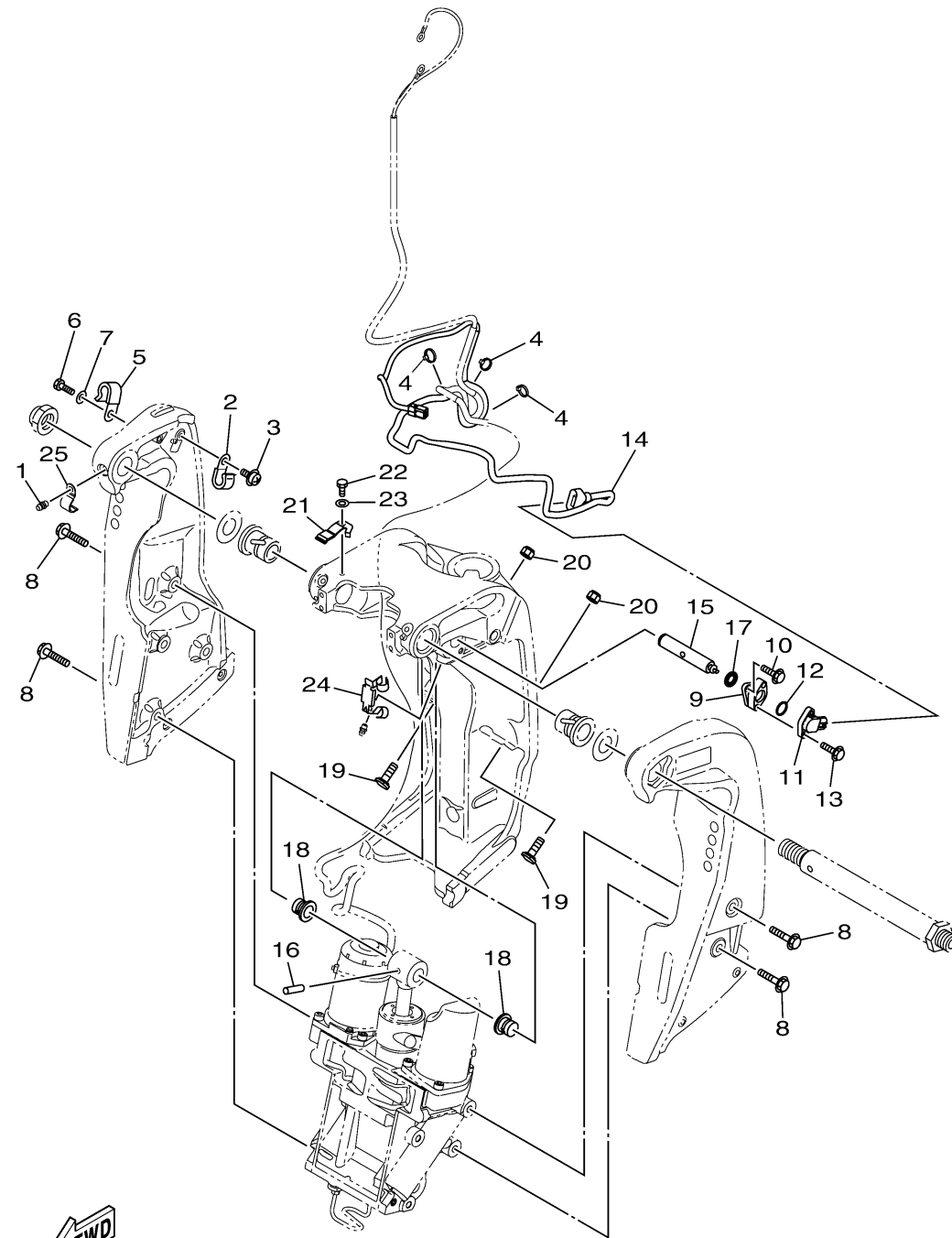
6KF1100-V300

Ref No.	Part Number	Description	Qty	Remarks
1	93700-06002-00	NIPPLE, GREASE	1	
2	90465-08M83-00	CLAMP	1	
3	97985-06212-00	SCREW, WITH WASHER	1	
4	90465-11M10-00	CLAMP	3	
5	90465-08M83-00	CLAMP	1	
6	97085-06010-00	BOLT	1	
7	92905-06600-00	WASHER	1	
8	90119-10024-00	BOLT, WITH WASHER	8	
9	6KA-4382A-00-00	ADAPTOR 1	1	
10	97595-05516-00	BOLT, WITH WASHER	2	
11	6GR-85887-00-00	SENSOR, ANGLE	1	
12	93210-17MF9-00	O-RING	1	
13	97595-05516-00	BOLT, WITH WASHER	2	
14	6KF-82553-00-00	EXTENSION, WIRE LEAD	1	
15	6KA-43126-00-00	PIN, UPPER SHOCK MOUNT	1	
16	91690-60022-00	PIN, SPRING	1	
17	93210-06ME6-00	O-RING	1	
18	90386-18M14-00	BUSH	2	
19	6AW-43376-00-00	BOLT, THRUST RECEIVER	2	
20	95780-10300-00	NUT, FLANGE	2	

CONTINUED ON NEXT FRAME >

BRACKET 2

Ref No.	Part Number	Description	Qty	Remarks
21	6KF-42829-00-00	PLATE, CLAMP 2	1	
22	97085-06010-00	BOLT	1	
23	92905-06600-00	WASHER	1	
24	6KF-42828-00-00	PLATE, CLAMP	1	
25	90462-08104-00	CLAMP	1	



6KF1100-V300