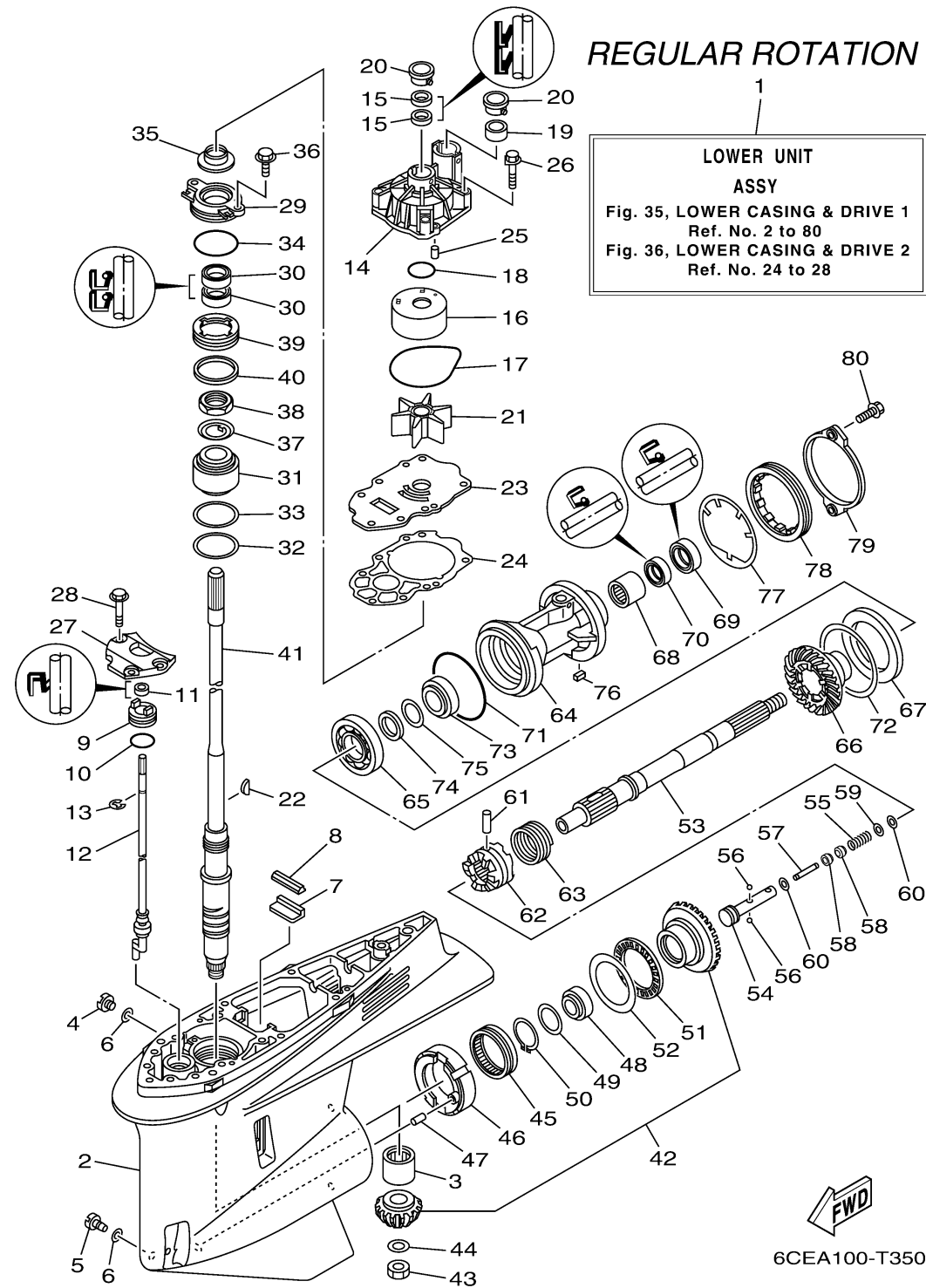


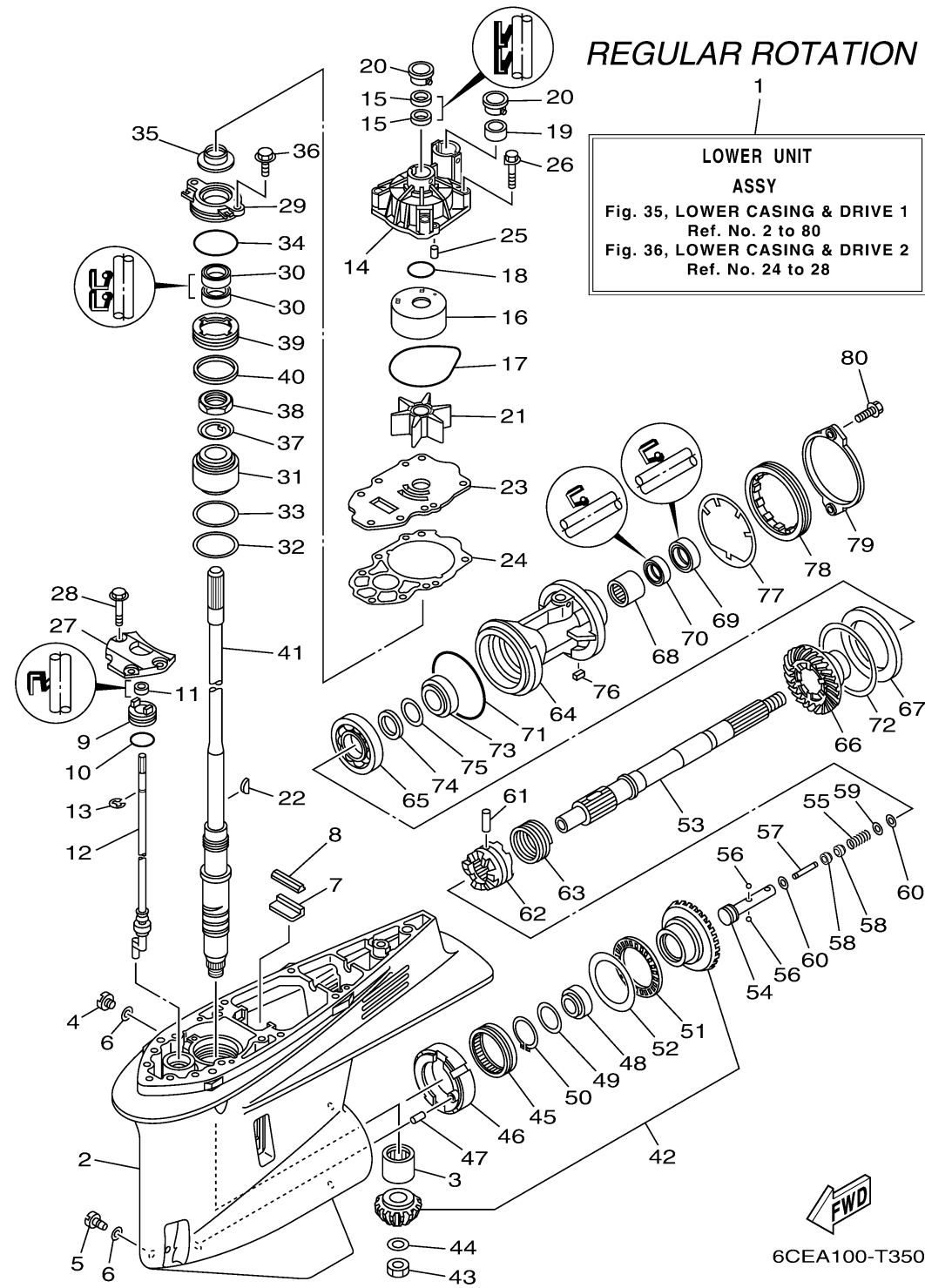
# LOWER CASING DRIVE 1



Ref No.	Part Number	Description	Qty	Remarks
1	6CE-45300-05-8D	LOWER UNIT ASSY	1	X(25.3"), RH
1	6CE-45300-15-8D	LOWER UNIT ASSY	0	U(30.3"), RH
2	6CE-45301-00-8D	CASING, LOWER	1	
3	93311-83280-00	BEARING	1	
4	90340-08002-00	PLUG, STRAIGHT SCREW	1	
5	688-45341-10-00	PLUG, DRAIN	1	
6	90430-08003-00	.GASKET	2	
7	663-45376-00-00	GUIDE, SEAL DAMPER	1	
8	6CE-45375-00-00	DAMPER, SEAL	1	
9	6CE-45321-10-00	PLATE	1	X(25.3")
9	6CE-45321-20-00	PLATE	0	U(30.3")
10	93210-33M49-00	.O-RING	1	
11	93106-09014-00	OIL SEAL	1	X(25.3")
11	93106-10001-00	..OIL SEAL	0	U(30.3")
12	6CE-44150-00-00	SHIFT CAM ASSY	1	X(25.3"), RH
12	6CE-44150-10-00	SHIFT CAM ASSY	0	U(30.3"), RH
13	99001-08600-00	CIRCLIP	1	X(25.3")
13	99001-09600-00	CIRCLIP	0	U(30.3")
14	6CE-44311-01-00	HOUSING, WATER PUMP	1	
15	93104-22M07-00	.OIL SEAL	2	

CONTINUED ON NEXT FRAME >

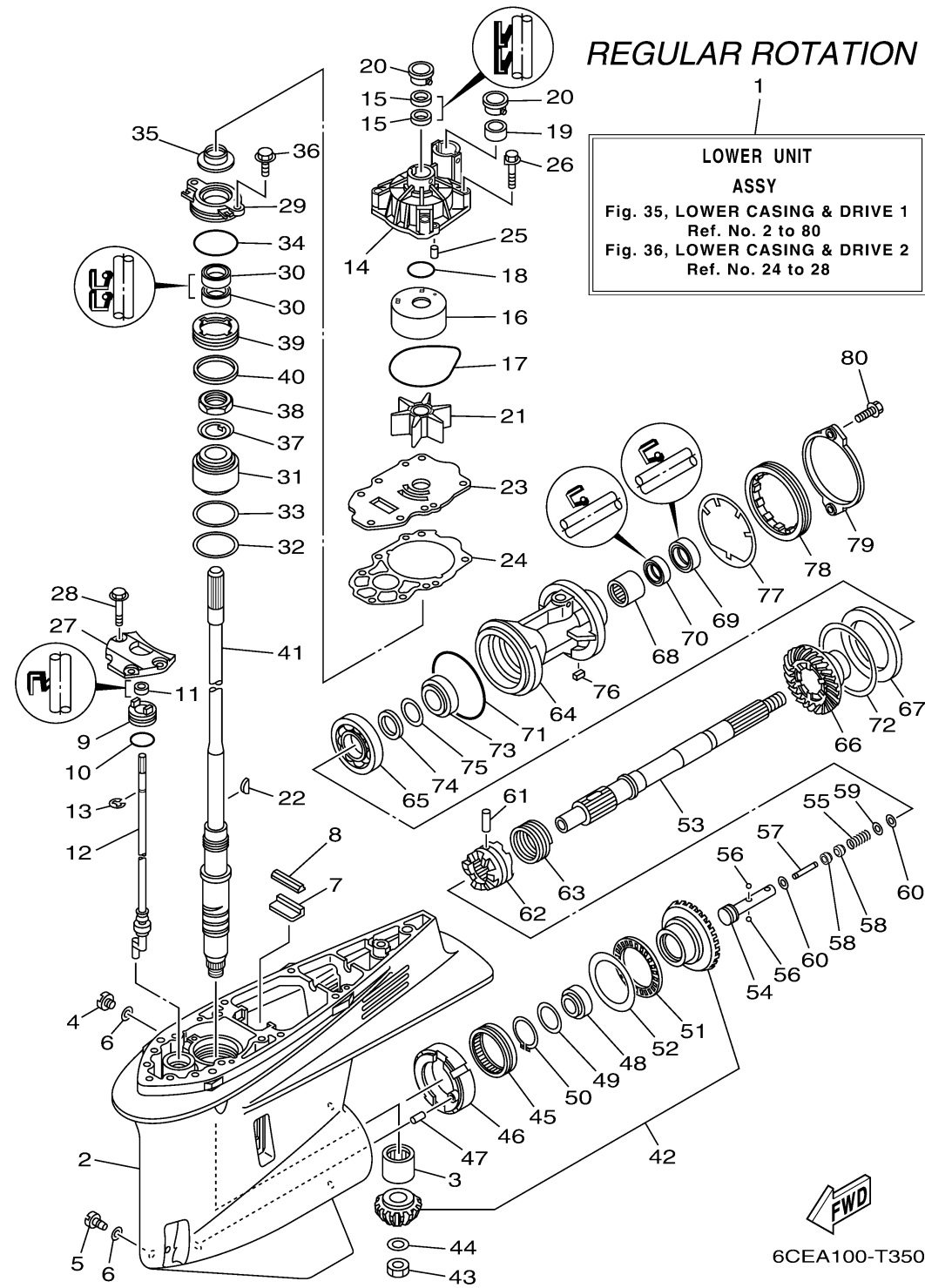
# LOWER CASING DRIVE 1



Ref No.	Part Number	Description	Qty	Remarks
16	6AW-44322-00-00	.INSERT, CARTRIDGE	1	
17	93210-94003-00	.O-RING	1	
18	93210-37160-00	.O-RING	1	
19	6AW-44365-01-00	.DAMPER, WATER SEAL 1	1	
20	6AW-44312-00-00	COVER, WATER PUMP HOUSING	2	
21	6CE-44352-00-00	.IMPELLER	1	
22	90280-04002-00	.KEY, WOODRUFF	1	
23	6CE-44323-01-00	.OUTER PLATE, CARTRIDGE	1	
24	6CE-44315-00-00	.GASKET, WATER PUMP	1	
25	93606-12019-00	PIN, DOWEL	2	
26	90119-08191-00	.BOLT, WITH WASHER	4	
27	6CB-44312-00-00	COVER, WATER PUMP HOUSING	1	
28	90119-08180-00	BOLT, WITH WASHER	3	
29	6CE-45335-00-9S	HOUSING, OIL SEAL	1	
30	93101-28019-00	.OIL SEAL	2	
31	93399-99966-00	BEARING	1	
32	90201-62008-00	WASHER, PLATE	1	
33	6CE-45587-00-00	SHIM (T:0.10MM)	1	UR
33	6CE-45587-10-00	SHIM (T:0.12MM)	1	UR
33	6CE-45587-20-00	SHIM (T:0.15MM)	1	UR

CONTINUED ON NEXT FRAME >

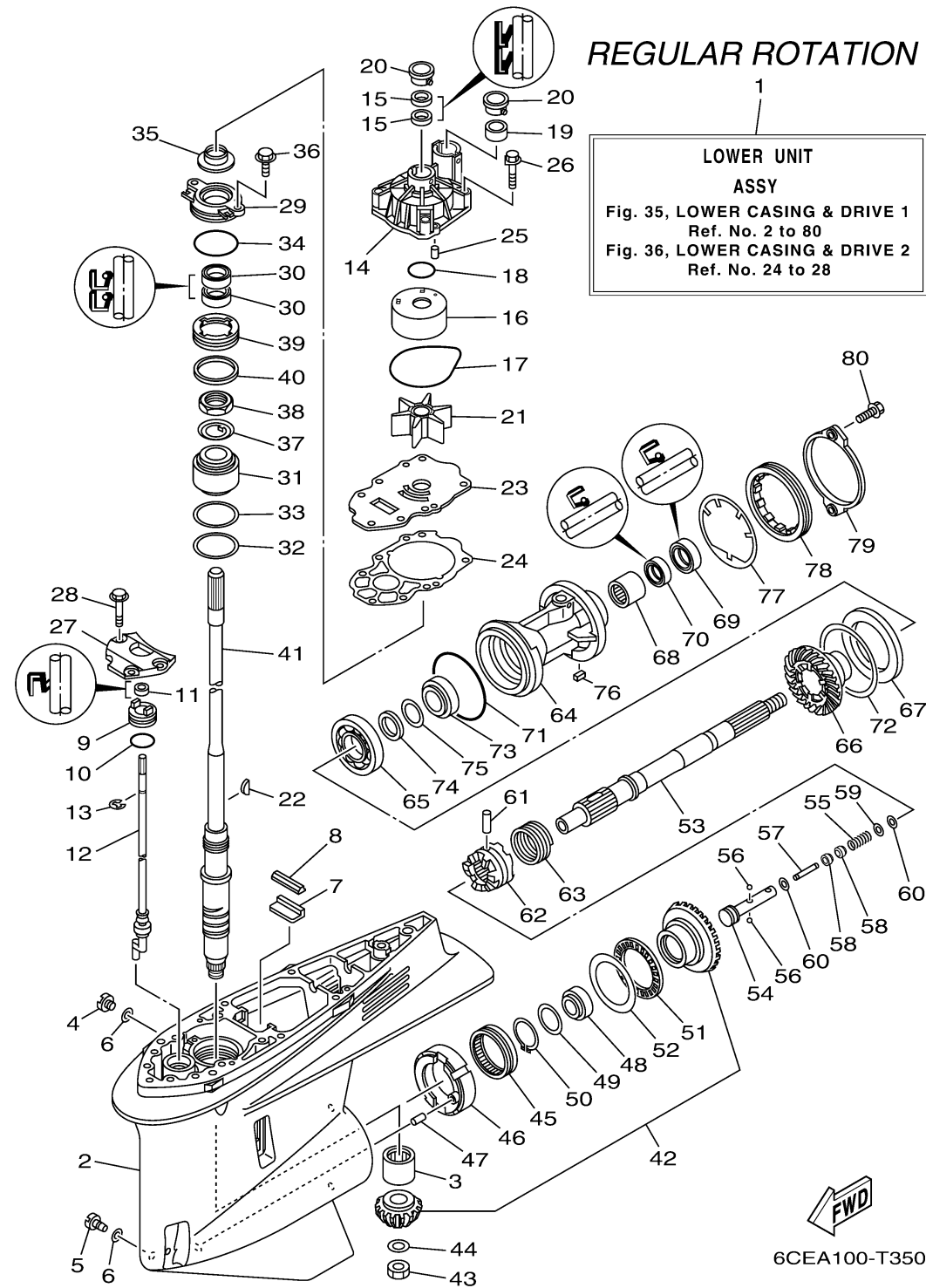
# LOWER CASING DRIVE 1



Ref No.	Part Number	Description	Qty	Remarks
33	6CE-45587-30-00	SHIM (T:0.18MM)	1	UR
33	6CE-45587-40-00	SHIM (T:0.30MM)	1	UR
33	6CE-45587-50-00	SHIM (T:0.40MM)	1	UR
33	6CE-45587-60-00	SHIM (T:0.50MM)	1	UR
34	93210-64488-00	.O-RING	1	
35	6KA-45344-00-00	COVER, OIL SEAL	1	
36	97E95-08520-00	BOLT, HEXAGON W/W DEEP RECESS	2	
37	90214-30003-00	WASHER, CLAW	1	
38	90170-30M18-00	NUT	1	
39	6CE-45244-00-00	NUT	1	
40	6CE-45539-00-00	SPACER 2	1	
41	6CE-45501-00-00	DRIVE SHAFT COMP.	1	X(25.3")
41	6CE-45501-10-00	DRIVE SHAFT COMP.	0	U(30.3")
42	6CE-45550-00-00	GEAR SET	1	
43	90170-16M19-00	NUT	1	
44	90201-16M00-00	WASHER, PLATE	1	
45	93311-85894-00	BEARING	1	
46	6CB-45824-00-00	ADAPTER	1	
47	93608-16M16-00	PIN, DOWEL	1	
48	93332-000A4-00	BEARING	1	

CONTINUED ON NEXT FRAME >

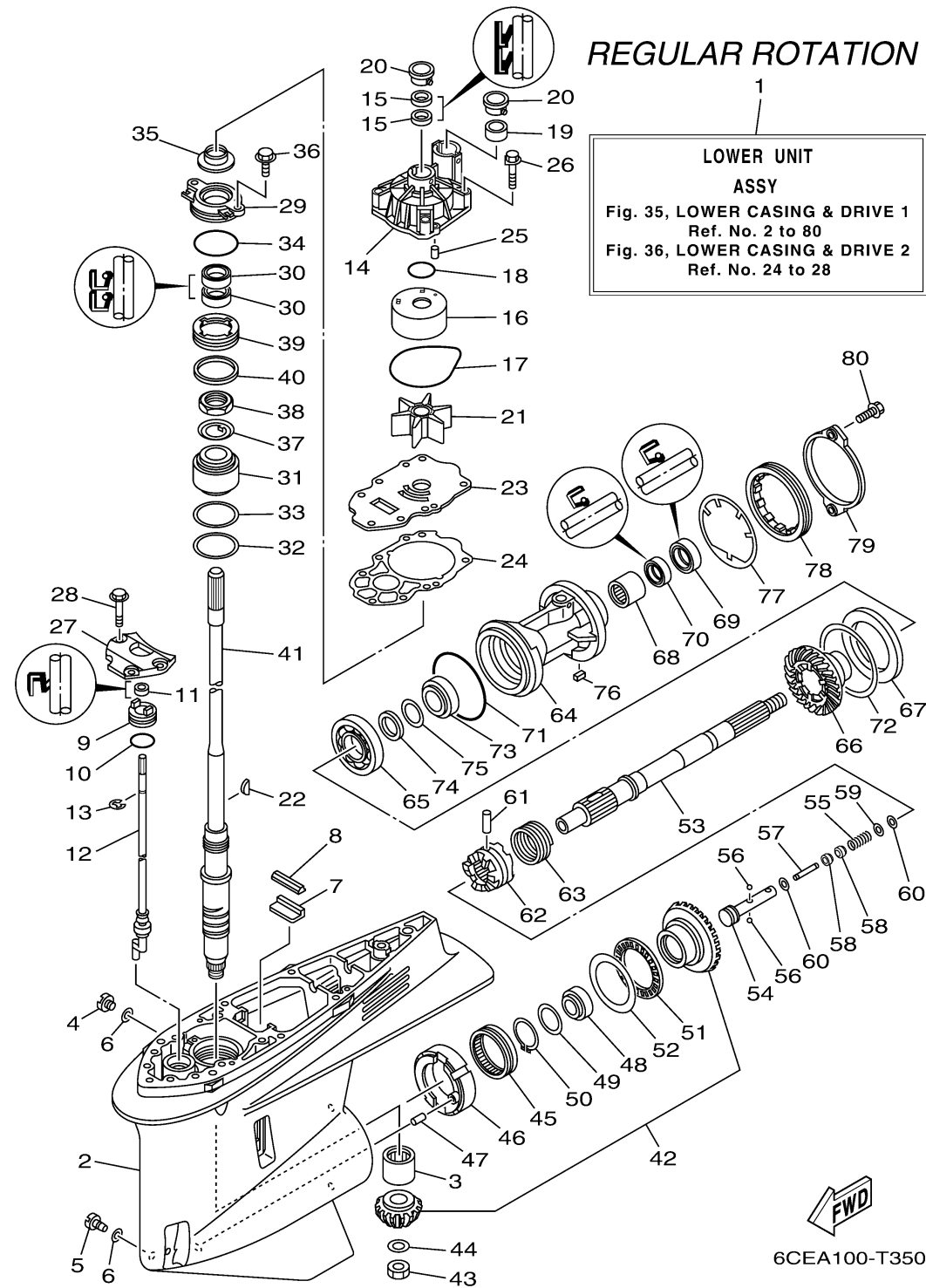
# LOWER CASING DRIVE 1



Ref No.	Part Number	Description	Qty	Remarks
49	90201-41008-00	WASHER, PLATE	1	
50	99009-47500-00	CIRCLIP	1	
51	93340-67011-00	BEARING	1	
52	6CB-45567-00-00	SHIM (T:2.00MM)	1	UR
52	6CB-45567-10-00	SHIM (T:2.03MM)	1	UR
52	6CB-45567-20-00	SHIM (T:2.06MM)	1	UR
52	6CB-45567-30-00	SHIM (T:2.09MM)	1	UR
52	6CB-45567-40-00	SHIM (T:2.12MM)	1	UR
52	6CB-45567-50-00	SHIM (T:2.15MM)	1	UR
53	6CB-45611-00-00	SHAFT, PROPELLER	1	
54	6CB-45634-00-00	SLIDE, SHIFT	1	
55	90501-10M77-00	SPRING, COMPRESSION	1	
56	93501-04011-00	BALL	2	
57	6H1-45668-00-00	SHAFT, FREE 1	1	
58	61A-45635-00-00	PLUNGER, SHIFT	2	
59	90201-02M00-00	WASHER, PLATE	1	
60	90183-02M03-00	NUT, SPRING	2	
61	90250-08M07-00	PIN, STRAIGHT	1	
62	6CE-45631-00-00	CLUTCH, DOG	1	
63	6E5-45633-01-00	RING, CROSS PIN	1	

CONTINUED ON NEXT FRAME >

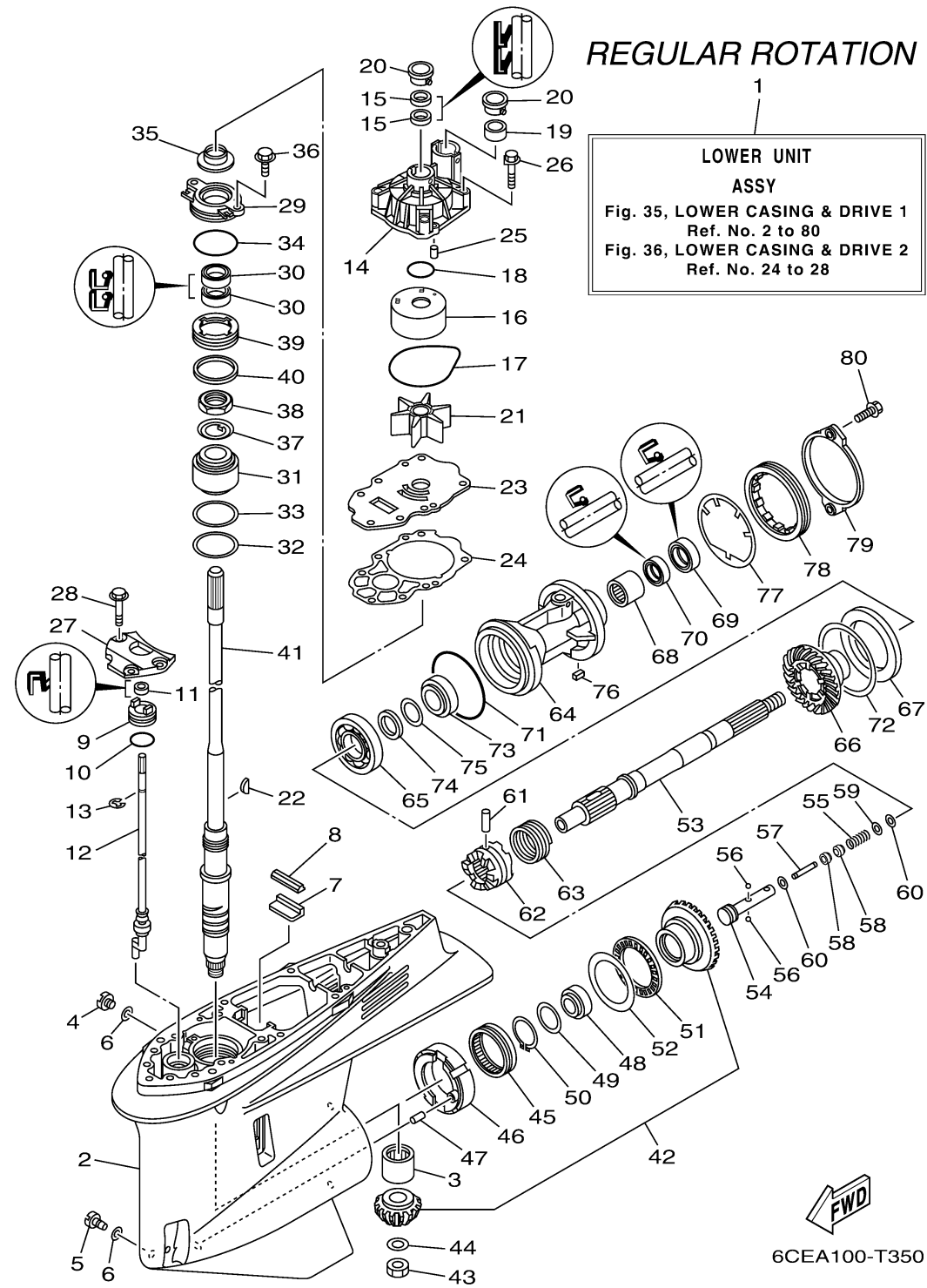
# LOWER CASING DRIVE 1



Ref No.	Part Number	Description	Qty	Remarks
64	6CE-45332-00-CA	HOUSING, BEARING	1	
65	93306-209U0-00	BEARING	1	
66	6CE-45571-00-00	GEAR 2 (21T)	1	
67	6CB-45576-00-00	WASHER, THRUST 2	1	
68	93315-43061-00	BEARING	1	
69	93101-30030-00	.OIL SEAL	1	
70	93101-30019-00	.OIL SEAL	1	
71	93211-02001-00	.O-RING	1	
72	6CB-45577-00-00	SHIM (T:0.10MM)	1	UR
72	6CB-45577-10-00	SHIM (T:0.12MM)	1	UR
72	6CB-45577-20-00	SHIM (T:0.15MM)	1	UR
72	6CB-45577-30-00	SHIM (T:0.18MM)	1	UR
72	6CB-45577-40-00	SHIM (T:0.30MM)	1	UR
72	6CB-45577-50-00	SHIM (T:0.40MM)	1	UR
72	6CB-45577-60-00	SHIM (T:0.50MM)	1	UR
73	93332-000A5-00	BEARING	1	
74	90201-32008-00	WASHER, PLATE	1	
75	676-45567-00-00	SHIM (T:0.7MM)	1	UR
75	676-45567-10-00	SHIM (T:0.8MM)	1	UR
75	676-45567-20-00	SHIM (T:0.9MM)	1	UR

CONTINUED ON NEXT FRAME >

# LOWER CASING DRIVE 1



Ref No.	Part Number	Description	Qty	Remarks
75	676-45567-30-00	SHIM (T:1.0MM)	1	UR
75	676-45567-40-00	SHIM (T:1.1MM)	1	UR
75	676-45567-50-00	SHIM (T:1.2MM)	1	UR
76	90282-05008-00	KEY, STRAIGHT	1	
77	6CB-45383-00-00	WASHER, CLAW	1	
78	6CB-45384-00-00	NUT	1	
79	6CE-45361-10-00	CAP, LOWER CASING	1	
80	90105-08M61-00	BOLT, FLANGE	2	