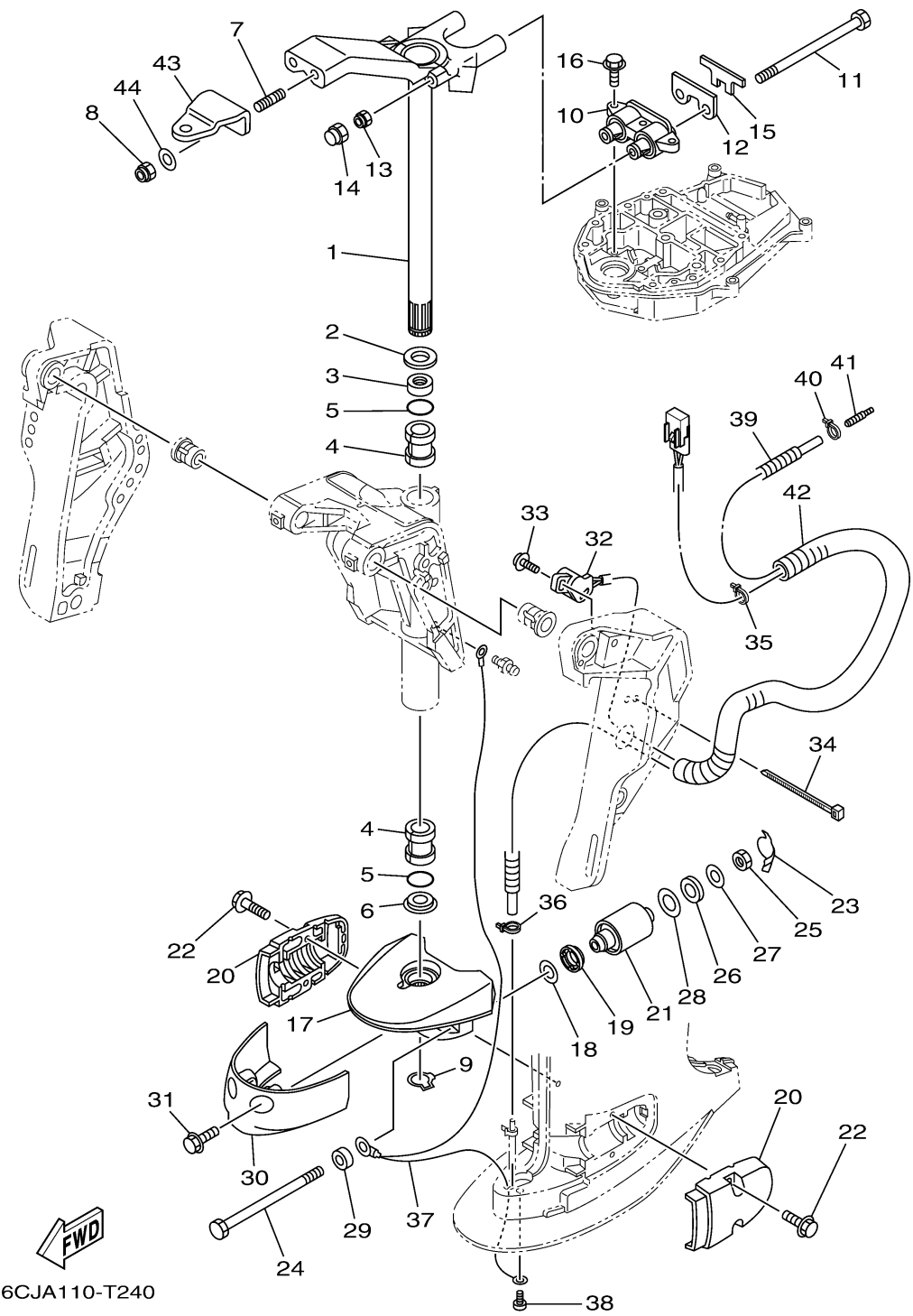


BRACKET 2

Ref No.	Part Number	Description	Qty	Remarks
1	69W-42510-01-8D	STEERING BRACKET ASSY	1	
2	90201-30M00-00	WASHER, PLATE	1	
3	90386-30M78-00	BUSH	1	
4	90386-30M77-00	BUSH	2	
5	93210-29M94-00	O-RING	2	
6	90386-30M60-00	BUSH	1	
7	90116-10063-00	BOLT, STUD	2	
8	90185-10027-00	NUT, SELF-LOCKING	2	
9	93410-28M06-00	CIRCLIP	1	
10	6CJ-44514-00-00	MOUNT DAMPER, UPPER SIDE	1	
11	90109-08229-00	BOLT	2	
12	6CJ-44526-00-00	PLATE	1	
13	90185-08018-00	NUT, SELF-LOCKING	2	
14	6C5-44194-00-00	CAP	2	
15	6CJ-44533-00-00	DAMPER, UPPER MOUNT RUBBER	1	
16	97E75-08530-00	BOLT, HEXAGON W/W DEEP RECESS	3	
17	69W-44551-00-8D	HOUSING, LOWER MOUNT RUBBER 1	1	L(21.0")
18	90201-12M16-00	WASHER, PLATE	2	L(21.0")
19	6C5-43885-01-00	GROMMET	2	
20	6C5-44552-00-8D	HOUSING, LOWER MOUNT RUBBER 2	2	

CONTINUED ON NEXT FRAME >

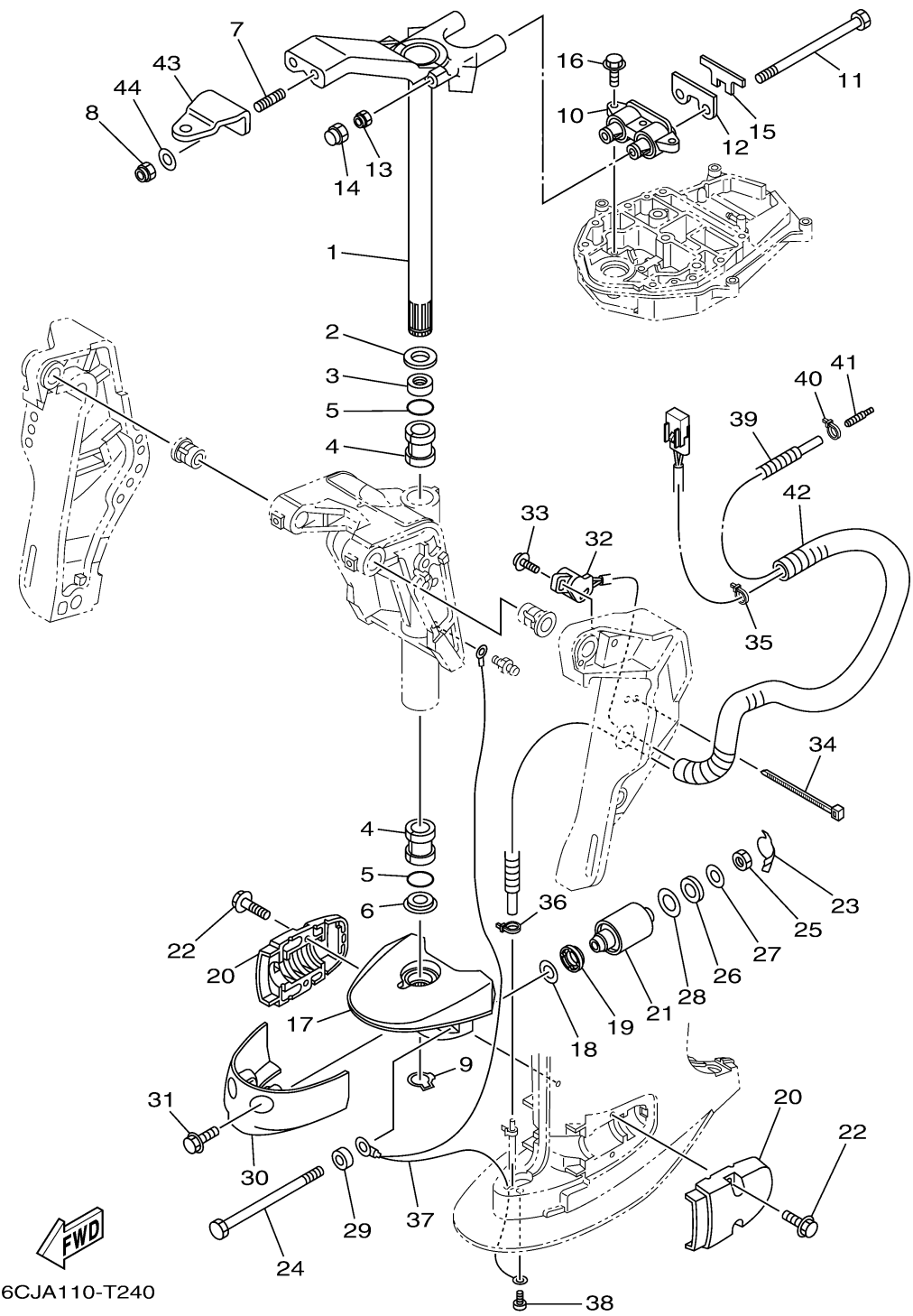


6CJA110-T240

BRACKET 2

Ref No.	Part Number	Description	Qty	Remarks
21	69W-44555-00-00	MOUNT DAMPER, LOWER SIDE	2	
22	90119-08094-00	BOLT, WITH WASHER	4	
23	6CJ-44575-00-00	DAMPER, LOWER MOUNT RUBBER	2	
24	90109-12MA3-00	BOLT	2	
25	95380-12600-00	NUT	2	
26	90202-21100-00	WASHER, PLATE	2	
27	90201-13M19-00	WASHER, PLATE	2	
28	90201-22M05-00	WASHER, PLATE	2	
29	90387-12057-00	COLLAR	2	L(21.0")
30	67C-44553-00-8D	COVER, LOWER MOUNT	1	L(21.0")
31	97E95-08520-00	BOLT, HEXAGON W/W DEEP RECESS	2	L(21.0")
32	63D-83672-11-00	TRIM SENDER	1	
33	97985-06216-00	SCREW, WITH WASHER	2	
34	90464-76001-00	CLAMP	1	
35	90465-11M10-00	CLAMP	1	
36	90465-11M10-00	CLAMP	1	
37	67C-82127-10-00	WIRE, LEAD 2	1	
38	97885-06008-00	SCREW, PAN HEAD	1	
39	6CJ-44385-00-00	HOSE, WATER 1	1	
40	90465-11M10-00	CLAMP	1	

CONTINUED ON NEXT FRAME >



BRACKET 2

Ref No.	Part Number	Description	Qty	Remarks
41	6E5-83558-00-00	END, NIPPLE	1	
42	90447-19009-00	TUBE	1	
43	65W-48511-01-00	HOOK, STEERING	1	
44	90201-10049-00	WASHER, PLATE	2	