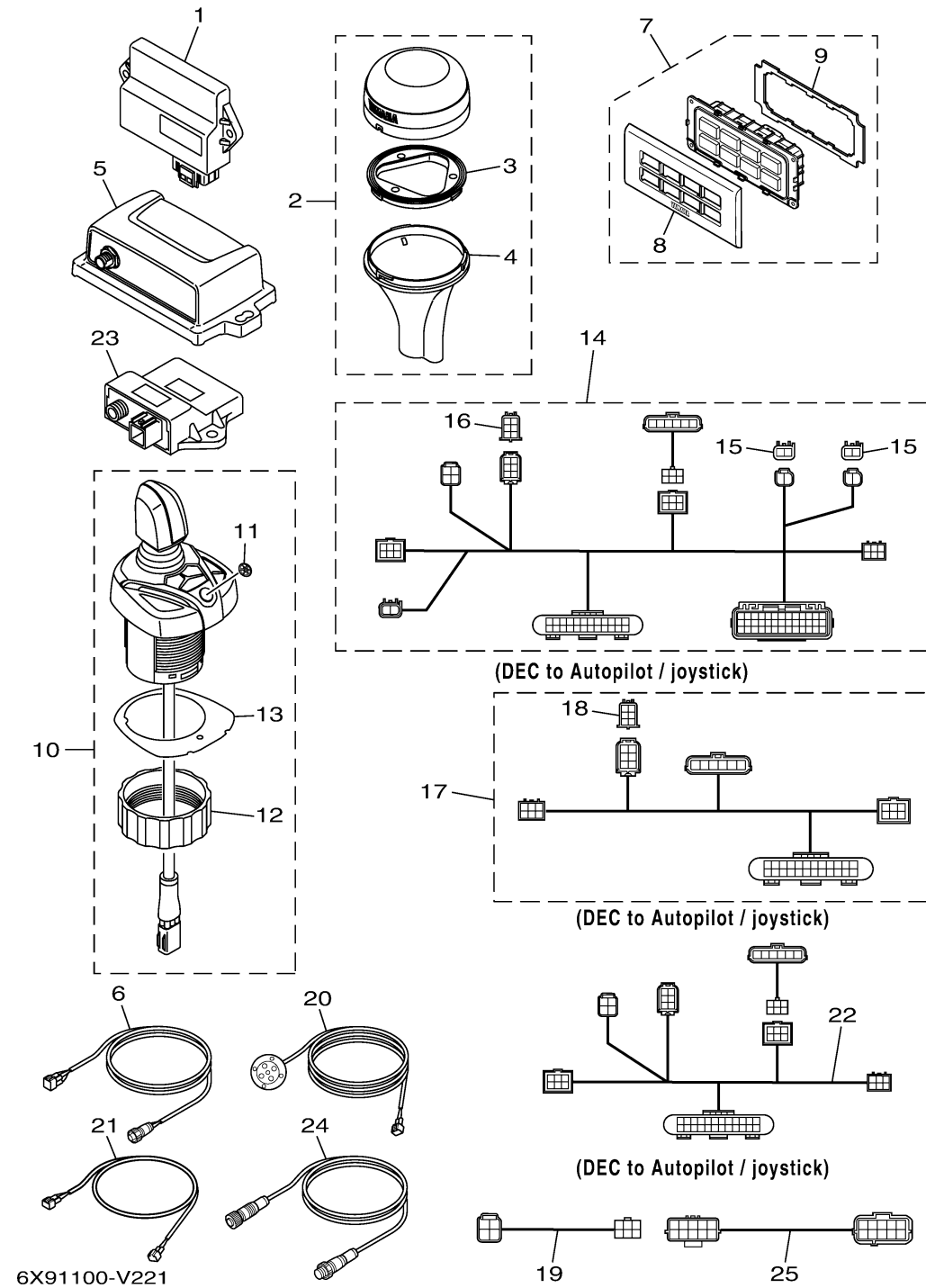


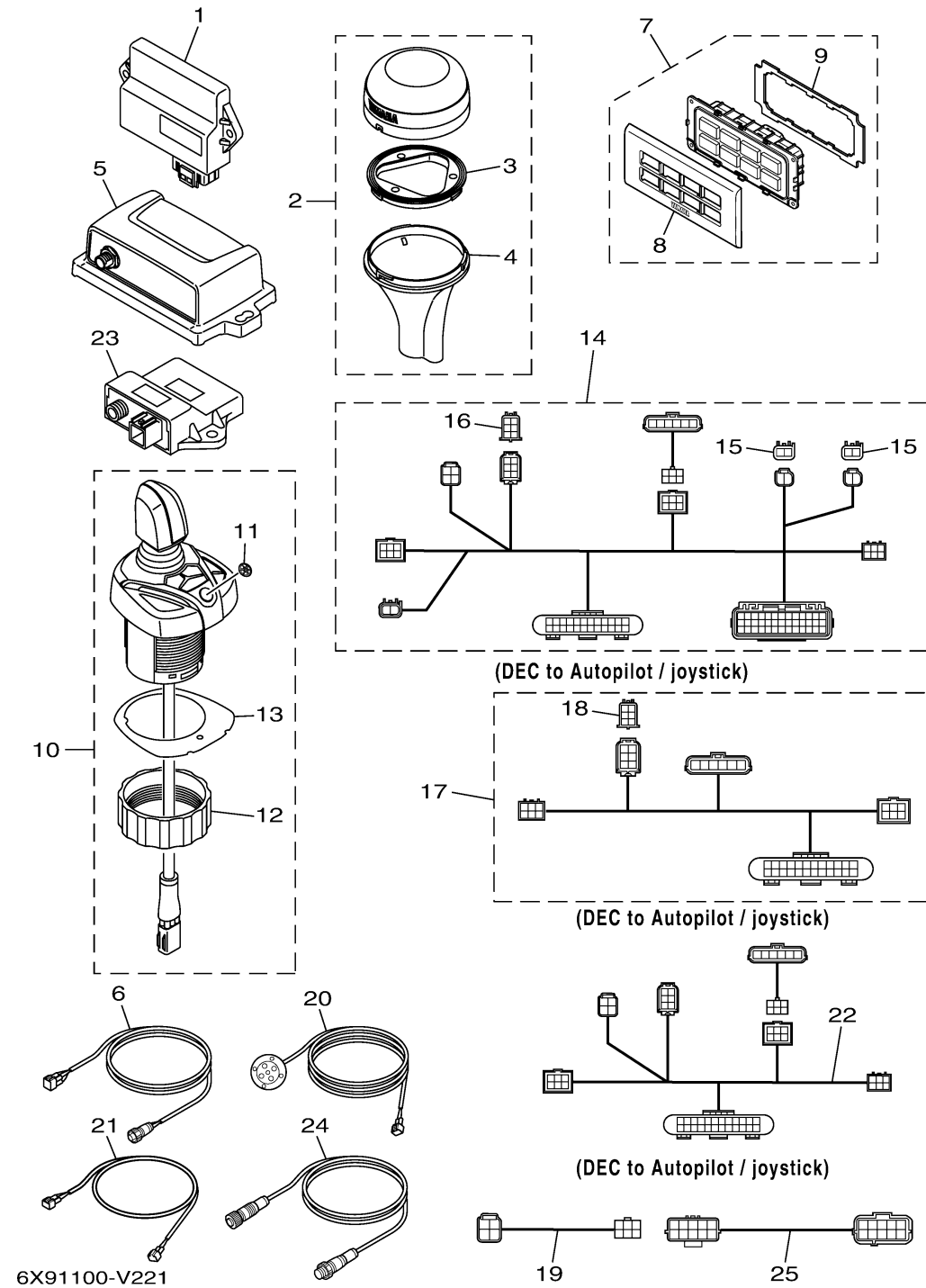
JOYSTICK AND AUTOPILOT



Ref No.	Part Number	Description	Qty	Remarks
1	6X9-8591T-12-00	BOAT CONTROL UNIT (SINGLE)	1	
1	6X9-8591T-22-00	BOAT CONTROL UNIT (TWIN)	1	
1	6X9-8591T-32-00	BOAT CONTROL UNIT (TRIPLE)	1	
1	6X9-8591T-42-00	BOAT CONTROL UNIT (QUAD)	1	
1	6X9-8591T-50-00	BOAT CONTROL UNIT (QUINT)	1	
2	6X9-88107-00-00	GPS UNIT	1	
3	6X9-8252H-00-00	..PLATE, HOLDER	1	
4	6X9-8255H-00-00	..HOLDER, SOCKET	1	
5	6X9-8A410-00-00	HEADING SENSOR	1	
6	6YM-83553-00-00	CONVERSION HARNESS	1	
7	6X9-8253V-00-00	AUTOPILOT PANEL	1	
8	6X9-82571-80-00	..PANEL, SWITCH	1	
9	6X9-22480-80-00	..SEAL ASSY	1	
10	6X9-482A0-00-00	JOYSTICK ASSY	1	
11	6X9-42697-00-00	..TUNING FORK MARK	1	
12	6X9-48156-00-00	..NUT 1	1	
13	6X9-4823A-00-00	..PACKING	1	
14	6X9-82386-01-00	BCU HARNESS (MAIN ST)	1	
15	68V-82582-10-00	..CAP 1 (2P)	2	
16	6X9-82582-20-00	..CAP 1 (6P)	1	

CONTINUED ON NEXT FRAME >

JOYSTICK AND AUTOPILOT



Ref No.	Part Number	Description	Qty	Remarks
17	6X9-82386-10-00	BCU HARNESS (2ND ST)	1	2ND STATION
18	6X9-82582-20-00	. CAP 1 (6P)	1	
19	6X9-83553-10-00	CONVERSION HARNESS	1	6PIN-4PIN (MAIN BUS-PIGTAIL)
20	6ES-83720-01-00	L.E.D ASSY (PROP LIGHTS)	1	
21	6X9-82586-40-00	PROP LIGHT EXTN HARNESS 40FT	1	UR 12.2M-40FT
21	6X9-82586-30-00	PROP LIGHT EXTN HARNESS 30FT	1	UR 9.1M-30FT
21	6X9-82586-20-00	PROP LIGHT EXTN HARNESS 20FT	1	UR 6.1M-20FT
22	6X9-82386-20-00	BCU HARNESS (QUINT/MAIN ST)	1	FOR QUINT ENGINE
23	6YG-8A2D0-10-00	GATEWAY	1	FOR OTHER COMPATIBLE MFD
24	6YG-82521-00-00	GATEWAY HARNESS	1	
25	6X9-82586-00-00	EKS HARNESS EXTENSION 4.6M-15F	1	UR
25	6X9-82586-10-00	EKS HARNESS EXTENSION 9.1M-30F	1	UR