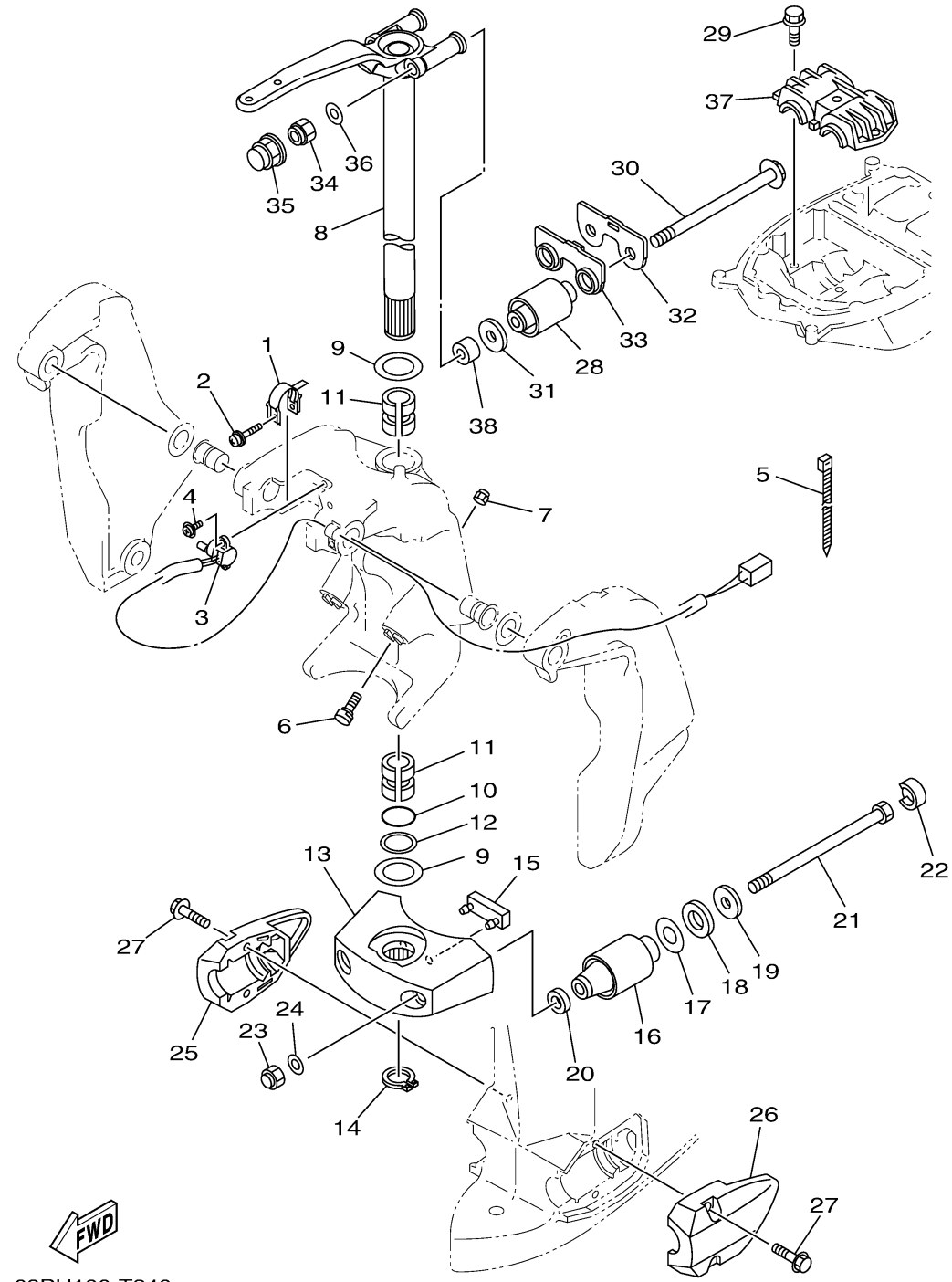


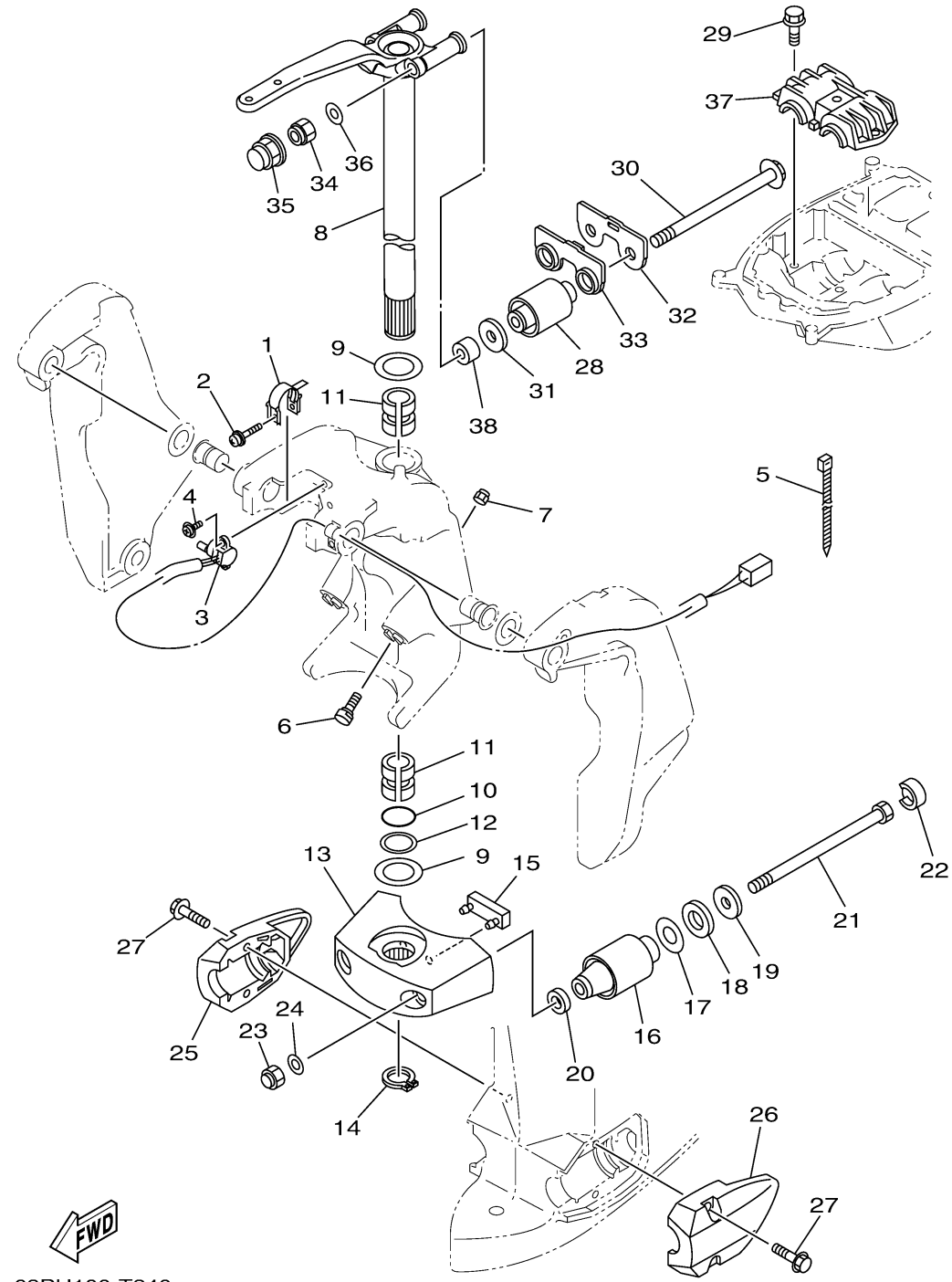
BRACKET 2



63PH100-T240

Ref No.	Part Number	Description	Qty	Remarks
1	64E-43139-11-00	CAM, TRIM SENDER	1	
2	90159-05059-00	SCREW, WITH WASHER	1	
3	67H-83672-02-00	TRIM SENDER	1	
4	97985-06216-00	SCREW, WITH WASHER	2	
5	90465-11M10-00	.CLAMP	3	
6	61A-43376-00-00	BOLT, THRUST RECEIVER	2	
7	95780-10300-00	NUT, FLANGE	2	
8	6DA-42510-10-CE	STEERING BRACKET ASSY	0	WHITE
8	6DA-42510-10-8D	STEERING BRACKET ASSY	1	GRAY
9	90201-38M60-00	WASHER, PLATE	2	
10	93210-37MH7-00	O-RING	1	
11	90386-38M32-00	BUSH	2	
12	90202-40M47-00	WASHER, PLATE	1	
13	68V-44551-00-8D	HOUSING, LOWER MOUNT RUBBER 1	1	GRAY
13	68V-44551-00-CE	HOUSING, LOWER MOUNT RUBBER 1	0	WHITE
14	93410-37M04-00	CIRCLIP	1	
15	61A-44575-01-00	DAMPER, LOWER MOUNT RUBBER	1	
16	63P-44555-00-00	MOUNT DAMPER, LOWER SIDE	0	X(25.3")
16	60V-44555-00-00	MOUNT DAMPER, LOWER SIDE	2	L(20.3")
17	90201-35008-00	WASHER, PLATE	2	

CONTINUED ON NEXT FRAME >



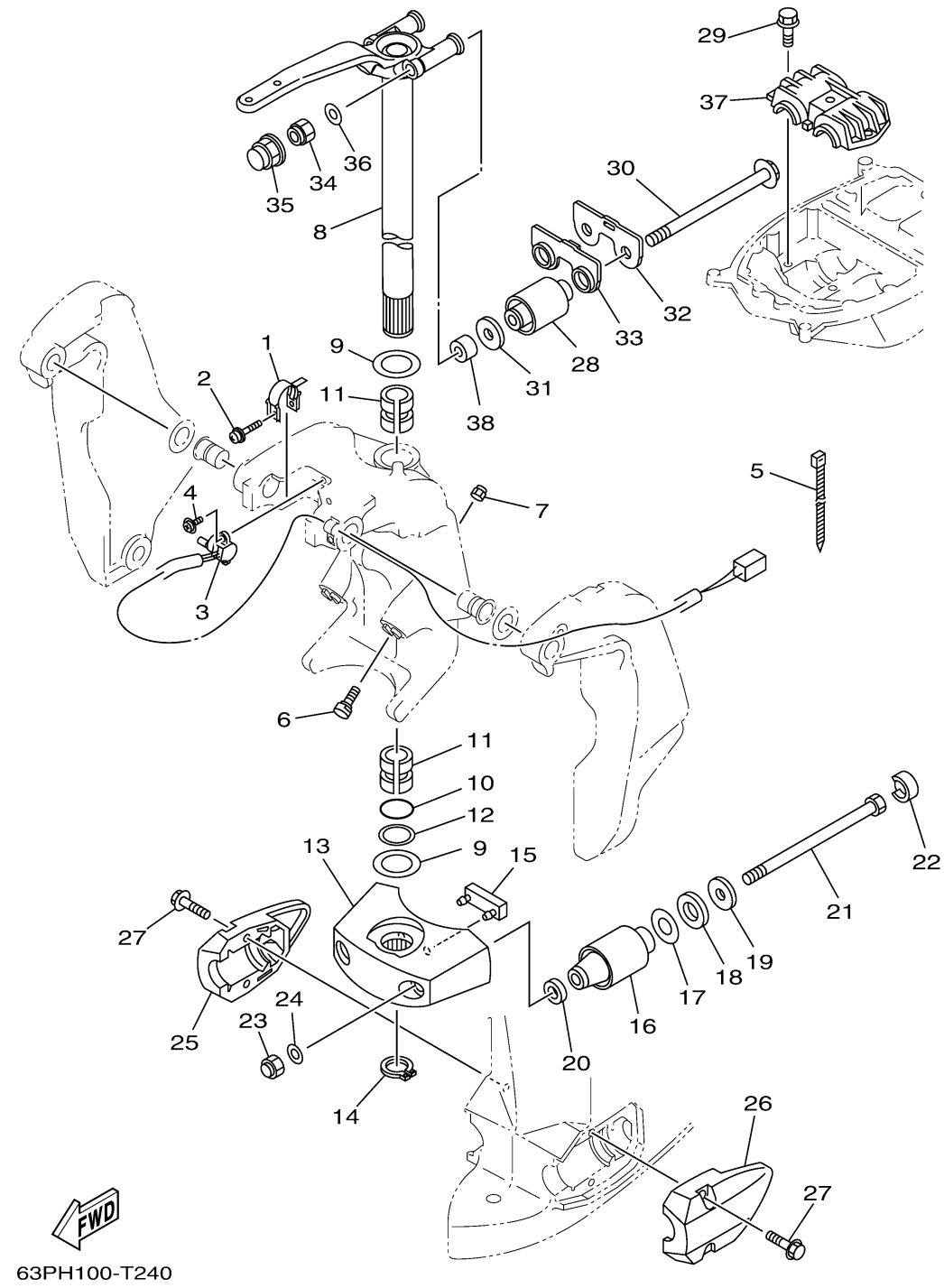
63PH100-T240

BRACKET 2

Ref No.	Part Number	Description	Qty	Remarks
18	90202-32M19-00	WASHER, PLATE	2	
19	90201-16M55-00	WASHER, PLATE	2	
20	90201-15M58-00	WASHER, PLATE	2	
21	90109-14007-00	BOLT	2	
22	69J-44533-00-00	DAMPER, UPPER MOUNT RUBBER	2	
23	90176-14003-00	NUT, CAP	2	
24	92995-14600-00	WASHER	2	
25	63P-44553-00-8D	COVER, LOWER MOUNT	1	GRAY
25	63P-44553-00-CE	COVER, LOWER MOUNT	0	WHITE
26	63P-44556-00-CE	COVER, LOWER MOUNT 2	0	WHITE
26	63P-44556-00-8D	COVER, LOWER MOUNT 2	1	GRAY
27	90119-10058-00	BOLT, WITH WASHER	4	
28	6DA-44514-00-00	MOUNT DAMPER, UPPER SIDE	2	
29	90119-10024-00	BOLT, WITH WASHER	3	
30	90105-14009-00	BOLT, FLANGE	2	
31	90201-16M01-00	WASHER, PLATE	2	
32	6DA-44526-00-00	PLATE	1	
33	6DA-44532-00-00	STOPPER, UPPER MOUNT	1	
34	90185-14M00-00	NUT, SELF-LOCKING	2	
35	6DA-44194-00-00	CAP	2	

CONTINUED ON NEXT FRAME >

BRACKET 2



Ref No.	Part Number	Description	Qty	Remarks
36	92995-14600-00	WASHER	2	
37	63P-44511-00-00	COVER, UPPER MOUNT	1	
38	90387-14004-00	COLLAR	2	