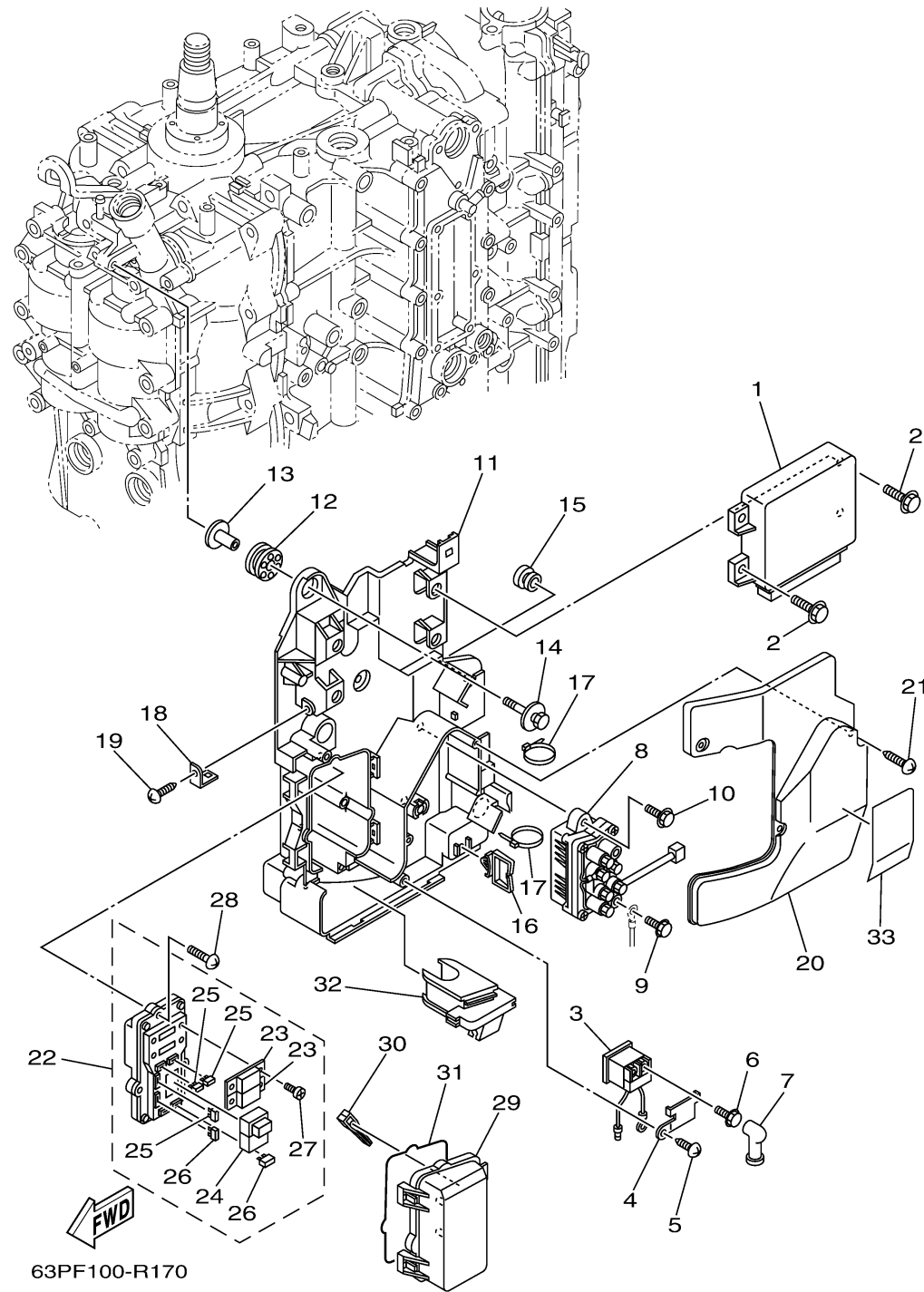
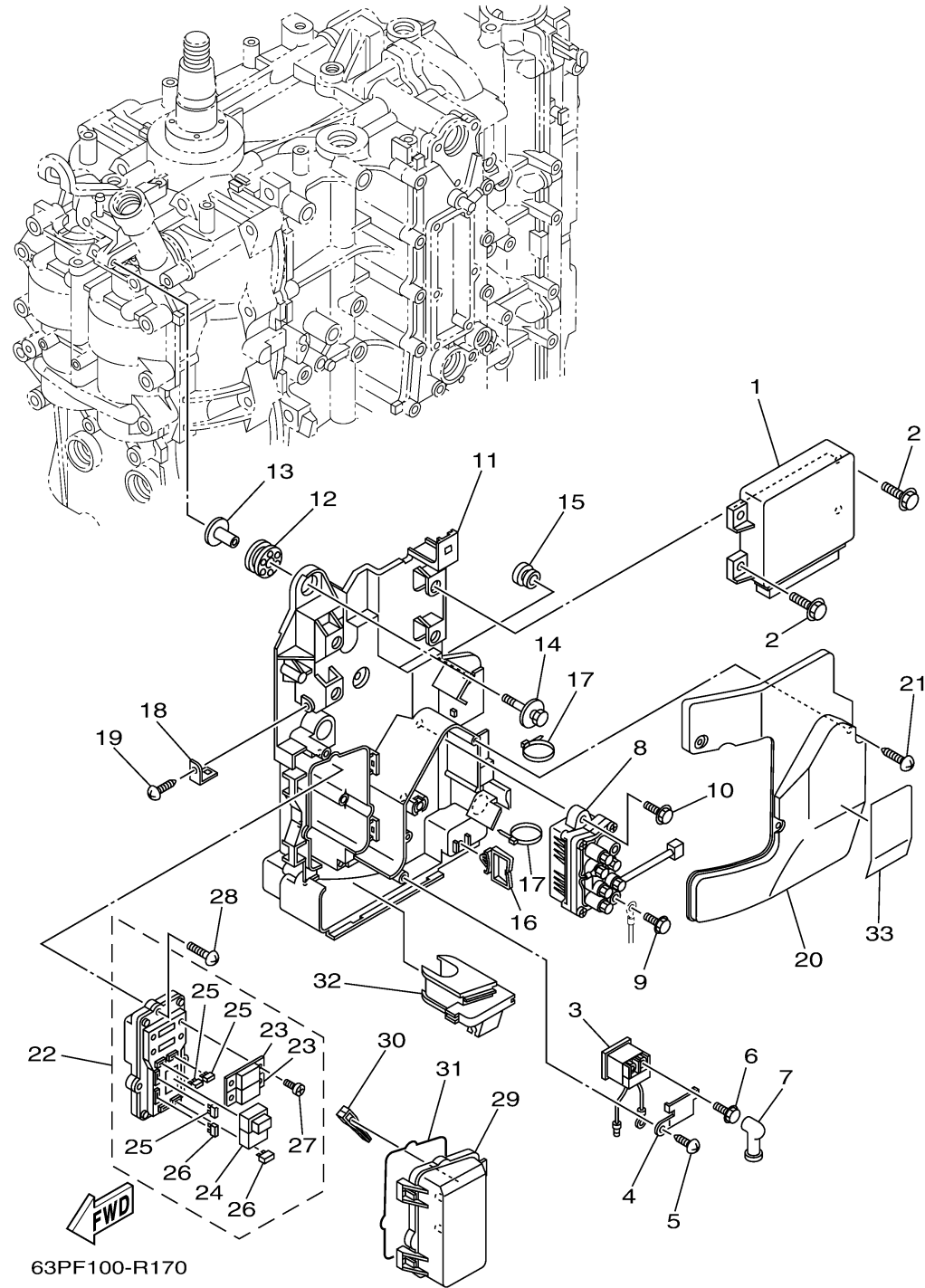


ELECTRICAL 2



| Ref No. | Part Number | Description | Qty | Remarks |
|---------|-----------------|-------------------------------|-----|---------|
| 1 | 63P-8591A-38-00 | ENGINE CONTROL UNIT ASSY | 1 | |
| 2 | 97E95-06516-00 | BOLT, HEXAGON W/W DEEP RECESS | 4 | |
| 3 | 68V-8194A-00-00 | RELAY | 1 | |
| 4 | 68V-81953-00-00 | STAY, RELAY | 1 | |
| 5 | 97780-60620-00 | SCREW, TAPPING | 1 | |
| 6 | 97E95-06610-00 | BOLT, HEXAGON W/W DEEP RECESS | 2 | |
| 7 | 6G5-82119-00-00 | COVER, LEAD WIRE | 2 | |
| 8 | 63P-81950-00-00 | RELAY ASSY | 1 | |
| 9 | 97E95-06610-00 | BOLT, HEXAGON W/W DEEP RECESS | 2 | |
| 10 | 97513-06520-00 | BOLT, WITH WASHER | 2 | |
| 11 | 63P-81948-01-00 | BRACKET | 1 | |
| 12 | 68F-85516-01-00 | SPACER | 3 | |
| 13 | 90387-06176-00 | COLLAR | 3 | |
| 14 | 68F-85119-00-00 | BOLT | 3 | |
| 15 | 90480-10627-00 | GROMMET | 1 | |
| 16 | 90464-23199-00 | CLAMP | 1 | |
| 17 | 90465-13M18-00 | CLAMP | 3 | |
| 18 | 68V-85548-01-00 | HOLDER | 1 | |
| 19 | 97780-60620-00 | SCREW, TAPPING | 1 | |
| 20 | 63P-81942-00-00 | COVER | 1 | |

CONTINUED ON NEXT FRAME >



ELECTRICAL 2

| Ref No. | Part Number | Description | Qty | Remarks |
|---------|-----------------|---------------------------|-----|---------|
| 21 | 90169-05M00-00 | SCREW, TRUSS HEAD TAPPING | 3 | |
| 22 | 63P-82170-02-00 | FUSE BOX ASSY | 1 | |
| 23 | 63P-82151-00-00 | . FUSE (50A) | 2 | |
| 24 | 6AW-8195A-00-00 | . RELAY ASSY | 1 | |
| 25 | 67F-82151-00-00 | . FUSE (20A) | 3 | |
| 26 | 67F-82151-10-00 | . FUSE (30A) | 2 | |
| 27 | 68F-82846-00-00 | . SCREW, PAN HEAD (M5) | 4 | |
| 28 | 97780-50620-00 | SCREW, TAPPING | 3 | |
| 29 | 60V-85544-00-00 | CASE | 1 | |
| 30 | 67F-2812A-00-00 | . PULLER, FUSE | 1 | |
| 31 | 68F-82176-00-00 | DAMPER | 1 | |
| 32 | 63P-81336-01-00 | GROMMET | 1 | |
| 33 | 63P-81919-00-00 | GRAPHIC, REGULATOR | 1 | |