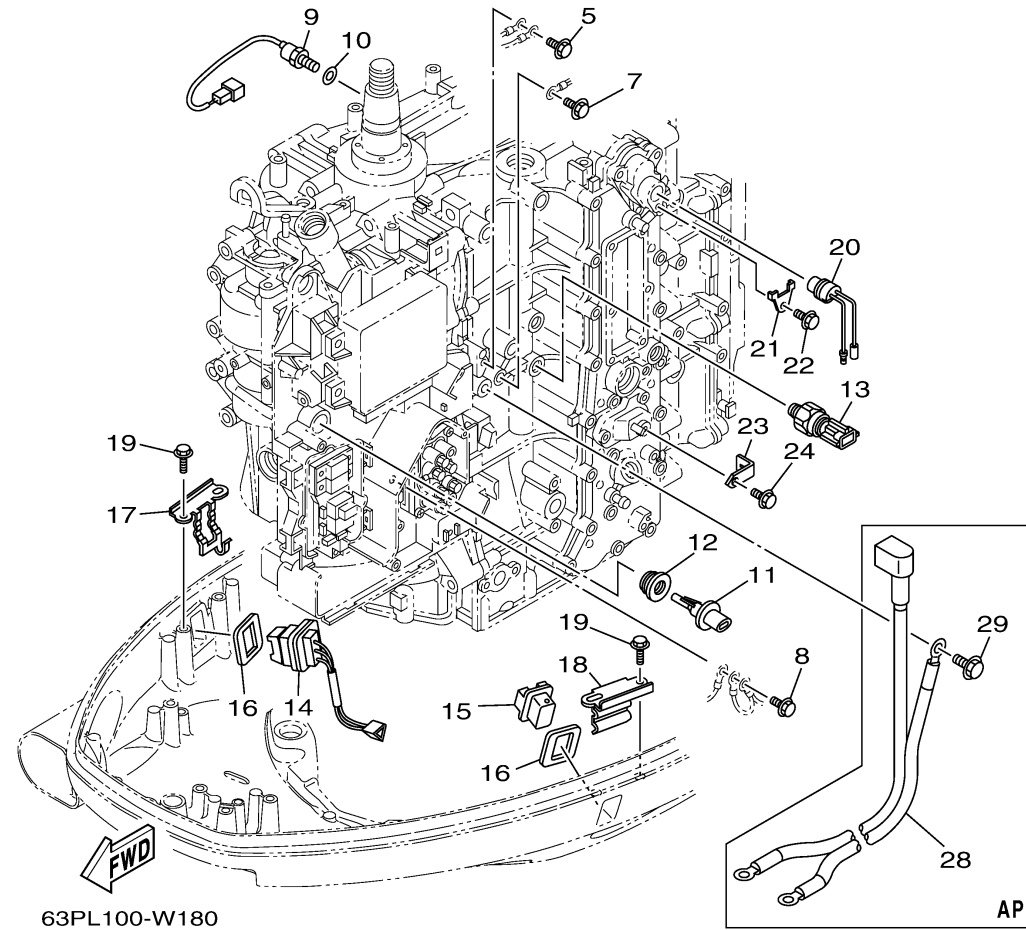
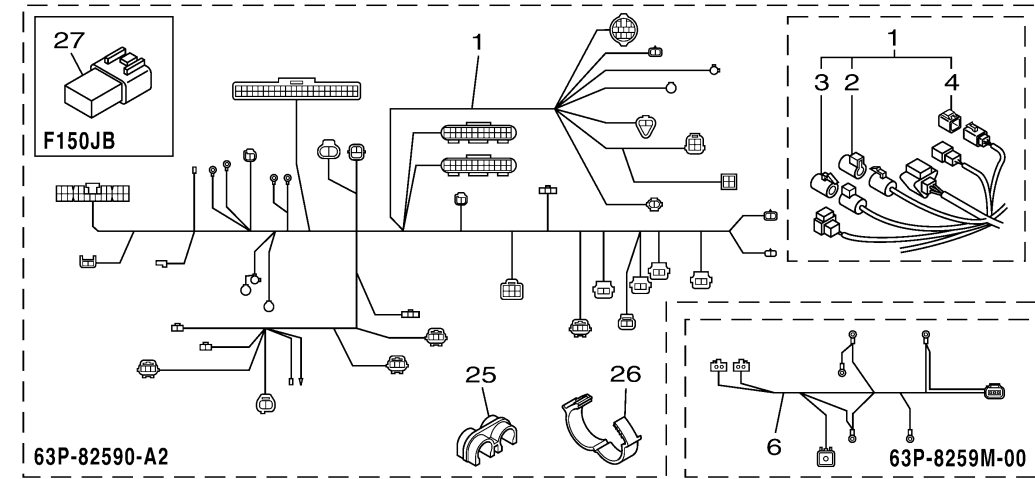


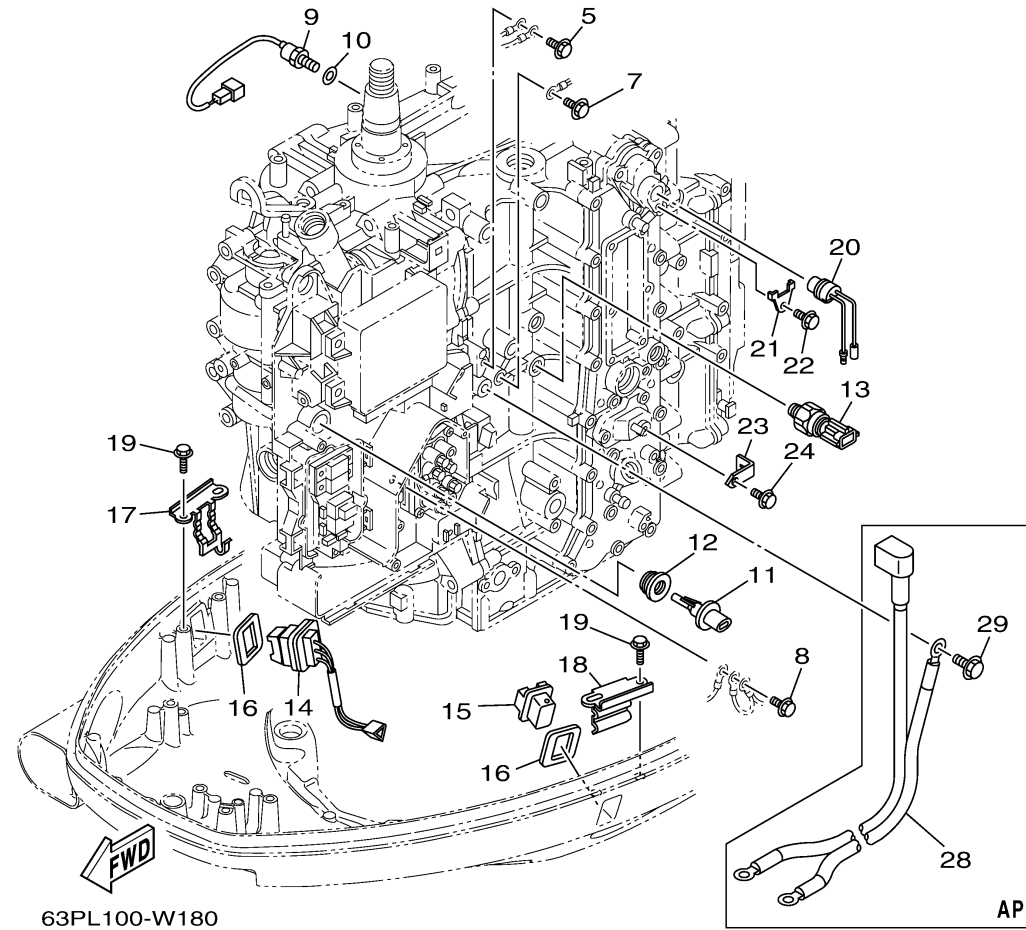
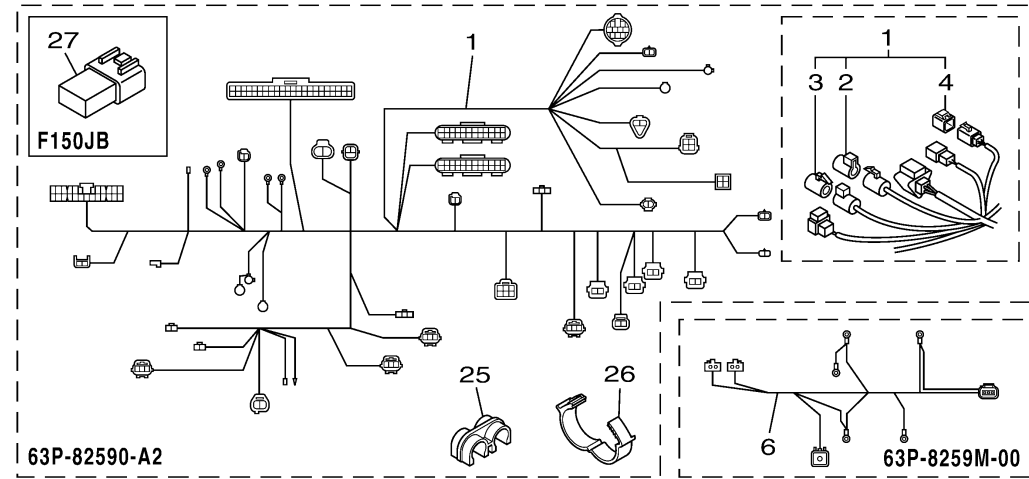
ELECTRICAL 3



Ref No.	Part Number	Description	Qty	Remarks
1	63P-82590-A2-00	WIRE HARNESS ASSY	1	FOR TILT LIMIT
2	6DA-82582-00-00	..CAP 1 (FEMALE)	1	
3	6DA-82582-10-00	..CAP 1 (MALE)	1	
4	6Y8-82582-11-00	..CAP 1 (4PIN)	1	
5	97E95-06516-00	BOLT, HEXAGON W/W DEEP RECESS	1	
6	63P-8259M-00-00	WIRE HARNESS ASSY 2	1	
7	97E95-06516-00	BOLT, HEXAGON W/W DEEP RECESS	1	
8	97E95-06512-00	BOLT, HEXAGON W/W DEEP RECESS	1	
9	61A-85790-01-00	THERMOSENSOR ASSY	1	
10	92990-10600-00	WASHER, PLATE	1	
11	63P-85886-00-00	SENSOR, AIR TEMPERATURE	1	
12	63P-14435-00-00	GROMMET	1	
13	6AW-83651-01-00	SENDER, OIL PRESSURE	1	
14	69J-82563-01-00	TRIM & TILT SWITCH ASSY	1	
15	69J-42723-01-00	COVER, BOTTOM	1	
16	69J-82587-01-00	GASKET	2	
17	63P-83614-01-00	BRACKET	1	
18	6DA-83614-00-00	BRACKET	1	
19	90109-06316-00	BOLT	4	
20	6P2-82560-01-00	THERMO SWITCH ASSY	1	

CONTINUED ON NEXT FRAME >

ELECTRICAL 3



Ref No.	Part Number	Description	Qty	Remarks
21	6E9-82588-00-00	PLATE	1	
22	90109-06M80-00	BOLT	1	
23	63P-8366P-01-00	BRACKET 4	1	
24	97E95-06512-00	BOLT, HEXAGON W/W DEEP RECESS	1	
25	90464-12224-00	CLAMP	1	
26	90464-26001-00	CLAMP	1	
27	68V-82582-10-00	CAP 1 (2P)	0	FOR JET-DRIVE
28	6DA-82105-02-00	BATTERY CABLE	1	AP
29	97E95-08516-00	BOLT, HEXAGON W/W DEEP RECESS	1	AP