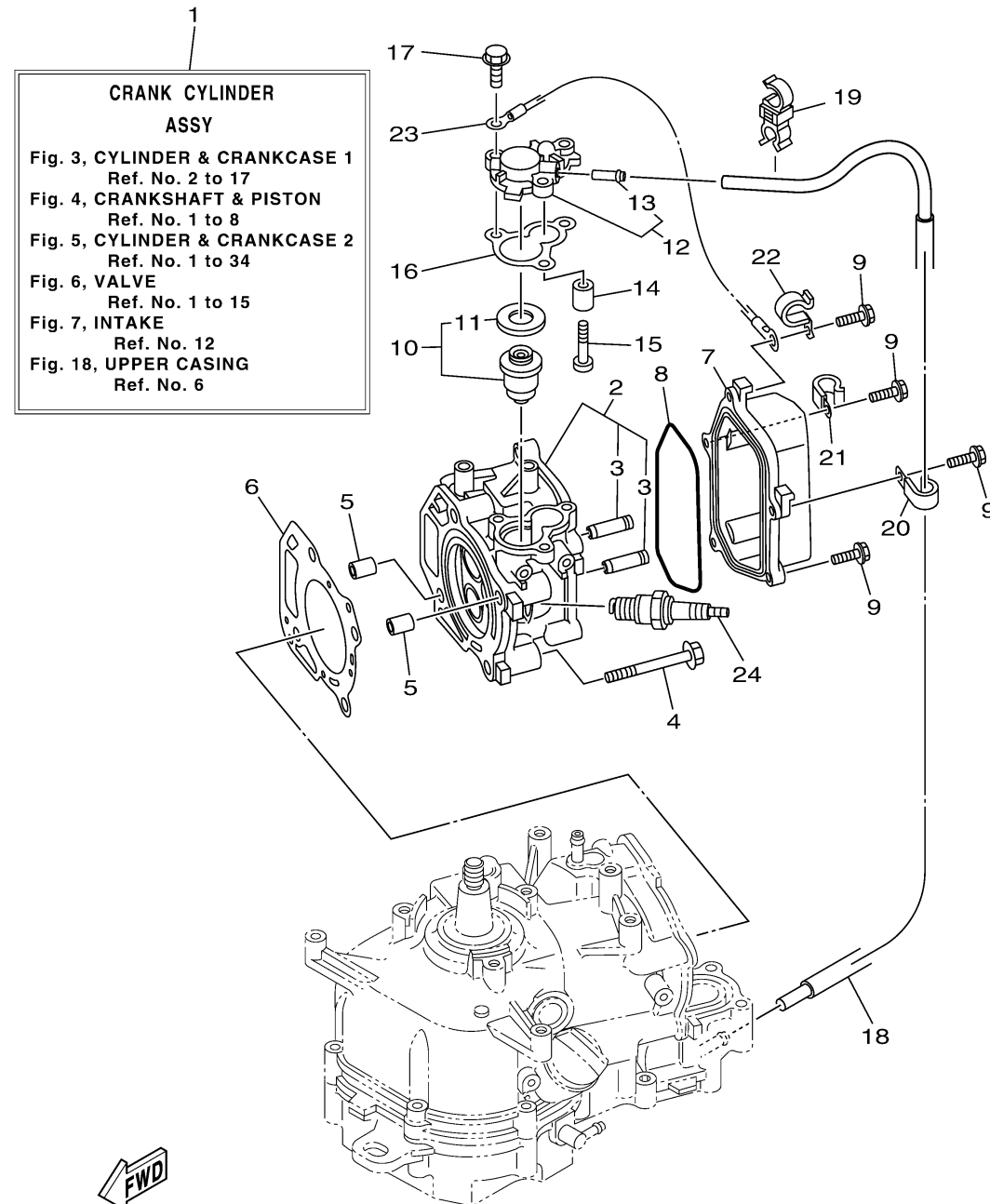


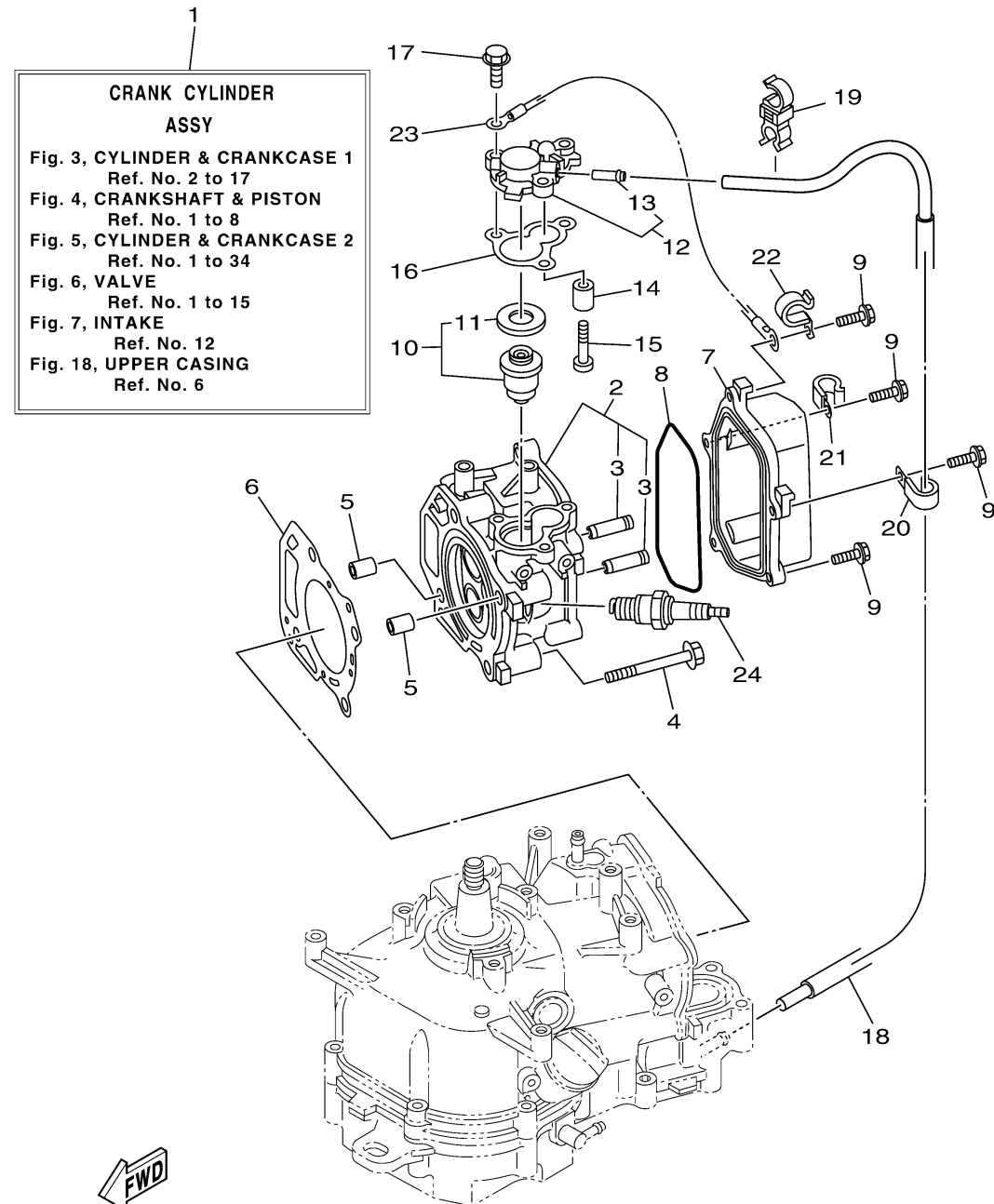
# CYLINDER CRANKCASE 1



Ref No.	Part Number	Description	Qty	Remarks
1	6EE-WE090-03-1S	CRANK CYLINDER ASSY	1	
2	6EE-E1111-00-1S	HEAD, CYLINDER 1	1	
3	6EE-E1133-10-00	.GUIDE, VALVE 1	2	
4	90105-08M36-00	.BOLT, FLANGE	4	
5	99530-10114-00	PIN, DOWEL	2	
6	6BX-11181-00-00	.GASKET, CYLINDER HEAD 1	1	
7	6EE-E1191-00-00	COVER, CYLINDER HEAD 1	1	
8	6EE-E1356-00-00	.SEAL, CYLINDER 2	1	
9	97E95-06520-00	BOLT, HEXAGON W/W DEEP RECESS	5	
10	66M-12411-01-00	THERMOSTAT	1	
11	688-12412-00-00	.SEAL, THERMOSTAT	1	
12	6EE-E2413-00-1S	COVER, THERMOSTAT	1	
13	6EE-F4377-00-00	.PIPE, JOINT 2	1	
14	6G8-11325-00-00	ANODE	1	
15	97880-05025-00	SCREW, PAN HEAD	1	
16	67D-12414-A0-00	.GASKET, COVER	1	
17	90119-06MA2-00	BOLT, WITH WASHER	3	
18	6EE-F4323-01-00	PIPE 12	1	
19	90464-09021-00	CLAMP	1	
20	90465-06M86-00	CLAMP	1	

CONTINUED ON NEXT FRAME >

# CYLINDER CRANKCASE 1



Ref No.	Part Number	Description	Qty	Remarks
21	90465-06M86-00	CLAMP	1	
22	90465-08371-00	CLAMP	1	
23	6EE-H2519-00-00	WIRE, EARTH LEAD	1	
24	CR6-HSB00-00-00	PLUG, SPARK (NGK CR6HSB)	1	